

THE PACIFIC CITIZEN

Established 1929

National Publication of the Japanese American Citizens League

(75c Postpaid U.S.) Newsstand: 25 Cents

#2,588 Vol. 111 No. 7 ISSN: 0030-8579 941 East 3rd St., Suite 200, Los Angeles, CA 90013 Friday, September 14, 1990

MEET 'CPL. JOE KASHIKOI YO':

Asian American Enlists into Mort Walker's GI Joe Comics

HONOLULU—This past week (Sept. 6), Cpl. Joe Kashikoi Yo, an Asian American character, was introduced by Mort Walker to his "Beetle Bailey" comic strip because he said the number of Asian Americans in the U.S. has grown 30% in the last 10 years.

Walker said he will stimulate new ideas—and perhaps attract the non-comic reading Asian Americans as well.

The ethnic roll call at Camp Swampy includes Beetle himself—he's Irish; Sgt. Snorkel is German, Plato is Greek; Rocky is Italian, Miss Buxley is Swedish, Gen. Halftrack is English and Lt. Flap is black.

Zero is just the farm hick, and no ethnic group in the world would lay claim to him, according to Beetle creator Mort Walker.

Kashikoi is Japanese for wise, intelligent, clever and essentially sums up the new character. "I've been drawing this strip for 40 years and introducing a new guy gives you some stimuli for new ideas," Walker explained. "I need a lot of stimuli." Yo was originally named Yokoi but shortened to have it sound more "cartoony," explained Walker.

He has also drawn flak in the past for taking a humorous approach to sexism. The Army newspaper, *Stars and Stripes*, dropped the strip a couple of times because the paper was afraid the black character might start the black servicemen to riot when they read it.

According to *Honolulu Star Bulletin* writer Burl Burlingame, Walker carefully sought opinions of a dozen or so Asian Americans before proceeding, including a woman in charge of Asian affairs at the *L.A. Times* and the Asia House in New York. He was on the verge of dropping the character after consulting with some Japanese Americans he talked to—"they were very sensitive to stereotyped images of take-charge, buy-everything Japanese. I was told it was OK to have a Japanese character, but he had to stay in the shadows, not say anything, and nor do anything. Therefore, no one would be offended."

But the cartoonist really wanted to install "a quick and smart and ambitious" character into the laid-back atmosphere of Camp Swampy, so he went ahead and Cpl. Yo such a person.

Japanese American cartoonist Dennis Fujitake shrugged when he looked at strips featuring Cpl. Yo. "I guess it's a stereotype to most Americans, but then everyone in 'Beetle Bailey' is a stereotype.

"The jokes aren't from Cpl. Yo's point of view, they're from Walker's," Fujitake pointed out. "Which probably means Yo won't get any more depth to him than you see here."

Walker said: "All I'm trying to do is to get people to laugh. Beetle Bailey is a family strip, a general satire of corporate life—it's not really about the Army, after all."



JIM TOKESHI

Tokeshi Named PSW Regional Director

SAN FRANCISCO—Jimmy Tokeshi was named as Regional Director for the JACL Pacific Southwest Office at Los Angeles. In selecting Tokeshi, national director Bill Yoshino stated,

"Jimmy has a strong background in the organization. The Pacific Southwest District is very important to the national organization and it will be a great challenge for Jimmy to work in the district as a member of the staff to implement the programs of the national JACL."

A graduate of California State University Los Angeles, Tokeshi had served in a variety of roles for the JACL. These included national youth chair, PSW JACL youth representative and board member of the Downtown Los Angeles chapter.

In accepting the position, Tokeshi referred to the motto of the National Association of Colored Women's Club which stated "Lift As We Climb," stating that "the spirit of those words has stayed with me and the work I hope to do as well as accomplish with JACL is in the spirit of that motto... I hope to serve the membership of this organization, the Asian American community and society as a whole with the inspiration held in those words."

Tokeshi began his duties in the PSW Regional Office on Aug. 30. Carol Saito continues to assist as the office secretary.

'L.A. TIMES' EDITORIAL TURNS TIDE:

Little Tokyo Veterans Memorial Dispute at Compromise Stage

LOS ANGELES—Col. Young O. Kim, president of the 100th/442nd MIS World War II Memorial Foundation, declared that the Foundation board, at its meeting on Sept. 5, had reaffirmed its concurrence with the compromise program offered by Michael D. Barker of the Barker-Patrinely Group, Inc., to the Nisei Veterans Coordinating Council (NVCC).

A letter dated July 17, 1990, was sent by Barker to Jim Mita, President of NVCC, requesting a response to his compromise program which included eight resolutions: (1) Memorial location, (2) Memorial design competition, (3) inclusion of the 13,649 member names of the 100th, 442nd and MIS groups of World War II, (4) special section for KIAs (killed in action) of other wars, (5) responsibility of identifying and funding the additional names of the special section by NVCC, (6) special plaque in recognition of all Japanese American veterans of World War II, (7) language for special plaque, and (8) funding for other than items 4 and 5 by the Memorial Foundation.

According to the 100/442/MIS World War II Memorial Foundation statement, NVCC was also requested to respond and confirm: (1) NVCC's approval of the compromise program based on the council member organizations' completing their respective review and ratification process, and (2) the extent of the council member or-

ganizations' commitment and fundraising capabilities.

The 100th/442nd/MIS World War II Veterans Memorial Monument was to include names of all 13,639 Japanese American—living and dead—who served in the 100th Battalion, 442nd Regimental Combat Team, and the Military Intelligence Service during wartime period.

The monument is to be permanently located in the main plaza of First Street Plaza, a \$240 million development project which includes the north side of East First Street in the heart of Little Tokyo.

Spokesperson for the 100th/442nd/MIS Veterans Memorial Committee, George Nishinaka, had said in an interview in February. "We want to make special recognition of the 100th/442nd and the MIS for their accomplishments during World War II. We're trying to immortalize the unit, as a team. The whole team contributed, a very special team."

Responding to critics who opposed the concept of immortalizing the living as well as the dead veterans, Nishinaka said in February, "You don't have to be dead to be immortalized. We're just trying to tell the story of a special group of Japanese Americans in segregated units who made history."

Criticism in the Wake

Critics such as Dr. Hayato Kihara, Dr. Harold Harada and Robert Hayamizu, all World War II veterans, opposed the inclusion of living veterans on the memorial—"We view it as a vision of supreme grandeur by living leaders of that group who espouse an immodest concept of martyrdom and immortality for themselves."

And the NVCC also wanted to include other World War II veterans as well as veterans of other wars—from the Spanish American War to the Grenada military action—on the monument. Exclusion of other World War II veterans, said Kihara, "would make those other vets second class citizens."

Dr. Harada said, in the February story, it would be "terrible" to omit three Congressional Medal of Honor recipients—Hiroshi Miyamura in the Korean War; Terry Kawamura and Rodney Yano, both awarded posthumously for bravery in the Vietnam War.

The Barker compromise program comes after the *Los Angeles Times* editorial, "Local Watch," introduced a compromise concept the day after an article on the veterans monument controversy, entitled "Battle Zone," written by Times staff writer Gary Libman, appeared on June 28, prominently on the front page of its View Section.

In the editorial, Bill Watanabe, executive director of the Little Tokyo Service Center, was quoted, "I would say why don't they compromise?"

"The answer now rests with the
Continued on Page 10



Courtesy Honolulu Star-Bulletin

'BEETLE BAILEY'—A nation-wide comic strip created by Mort Walker this week adds Cpl. Joe "Kashikoi" Yo—seen above in a dialogue with a farm hick, Private Zero.

JACL SCHOLARSHIP AWARDS (Pages 6 - 9)

JACL Scholarships Totalling \$72,200 Awarded to 40 Graduates, Freshmen

The National JACL Scholarship and Awards Program enjoyed another successful year in 1990. According to National Director Bill Yoshino, the JACL awarded 40 scholarships totaling \$72,200 to entering freshmen, undergraduates and graduate students. In addition, scholarships were awarded in the field of law, the performing arts, and in financial aid categories.

(A complete profile with photographs of the awardees appear inside this issue starting on page 6.)

The 1990 Scholarship committee, chaired by Teresa Maebori of Philadelphia JACL, reviewed 279 applications. Of these, 122 were freshman

candidates who had been prescreened by their chapters. The pool of applicants included National Merit Scholars, class valedictorians and students who had graduated magna cum laude. In selecting the recipients, the committee utilized a criteria that included academic achievement, proven leadership and dedication to campus and community work.

Changes in the 1990 Scholarship Program included:

The awarding of the Henry and Chiyo Kuwahara scholarships in the amount of \$5,000 to two entering freshmen.

In the financial aid category, students were asked to submit proof of financial need and these students were also made eligible for the general selection process which resulted in awards of \$17,500.

In commenting on the 1990 recipients, Yoshino observed, "It is important to note from the biographies, the personal essays and the letters of recommendation that the 1990 recipients have a deep interest in community involvement and a strong appreciation for their identity as Japanese Americans. The JACL has a commitment to provide for leadership development and the challenge for all of our youth is to be a part of that leadership in the future."

L.A. County Hate Crimes Hit Record Levels for 1990

LOS ANGELES—Racially and religiously motivated crimes in Los Angeles County reached record levels during the first half of 1990, according to the Sept. 6 mid-year report from the county Commission on Human Relations.

The escalating number of immigrants is a top factor in rising hate crimes, noted Deputy Sheriff Tom Greep of special investigations who noted that increased Asian and Latino populations provide greater numbers of targets.

Acts against Asian rose more than three-fold, from 7 during the first half of 1989 to 23 this year; against Latinos, from 11 to 14.

The increase has been so dramatic that the findings were reported to the Board of Supervisor at this time, rather than in the annual report, said commission executive director Eugene Morrell.

The Asian Pacific American Legal Center said it is beginning programs to teach leaders in the Asian community how to deal with ethnic misconceptions and with members of other races. "It comes down to how do we work and play well together," civil rights attorney Kathy Imahara for APALC commented.

NEWS IN BRIEF

Selma Country Club Admits Japanese Member

SELMA, Ala.—The all-white Selma Country Club reversed itself Aug. 24 and extended membership to a Japanese businessman whose application to the golf club had been rejected the previous month. Hiroshi Isogai, 55, manager of Honda All Lock Manufacturing Co. plant in Selma, in an interview after his initial rejection said he just wanted to play golf at the club.

THE CALENDAR

- BERKELEY**
Oct. 6—"A Sentimental Journey—A Sansei Celebration of the Nisei," North Berkeley Senior Center, 7-11:30 p.m. Program and dance. \$10. Info: (415) 237-1131.
- LOS ANGELES AREA**
Present-Sept. 16—A-Bomb Beauties at Burbage Theatre, 2330 Sawtelle Blvd., W.L.A. Info: (213) 478-0897.
Present-Sept. 29—"Paper, Glass and Shadow," paper assemblages by artist Kathleen Nojima at Kikuyu Gallery in Glendale. Info: (818) 957-2283.
Present-Oct. 21—Retrospective post-WWII Exhibit. "Best 100 Japanese Posters: 1945-1989" JACCC Doizaki Gallery (closed Mon.), info: (213) 628-2725.
Sept. 16—So. Calif. Nikkei Singles' carnival/picnic 10 a.m.-4 p.m. at El Dorado Park in Long Beach. Info: (714) 528-7837.
Sept. 21—Washington Medical Center Volunteers fundraiser, fall wardrobe, leather, Terrace Room, 12101 W. Washington Blvd., Culver City, 7 a.m.-4 p.m. Info: Lily Ann Inouye (213) 991-0601, ext 263.
Sept. 25—Occidental College Bird Studio discussion on contemporary Japanese music by Kiyotomi Yoshizaki, composer, 4:15 p.m., Info: (213) 259-2785.
Sept. 30—The search is on for the international singing champions of Los Angeles! Nikkodo USA, one of the founders of karaoke is proud to sponsor the 1990 Nikkodo International Karaoke Contest in cooperation with the Los Angeles Festival. Open to the public (no professionals, please!) \$2,000 cash, trip for two to Japan and Hong Kong, and exclusive recording contract with Polydor Records! Pasadena Civic Auditorium, 8:00 p.m. Info: call (818) 401-0230.
Oct. 6—18th Annual Aki Matsuri (Fall Festival). 1:00 p.m. Public cordially invited. East San Gabriel Valley Japanese Community Center, 1203 W. Puente Ave., in West Covina. Info: (818) 960-2566.
Oct. 6—Pacific Asia Museum Art Auction, dinner, 6 p.m. Info: (818) 449-2742.
Oct. 7—Japanese American Historical Society of So. Calif., fundraiser, Ken Nakaoka Center, Gardena, 12:30-3 p.m., Reservations: (213) 669-0189.
Oct. 7—Keiro Services Yuppie Yaki II picnic.

- at Police Academy, 1880 N. Academy Dr., 11 a.m.-4 p.m.; Info: (213) 263-5693.
Oct. 12-14—Asian American Voters Coalition National Conference, Biltmore Hotel; Regis. Info: Irvin Lai (213) 735-1331; Indar Singh (818) 708-3885.
Oct. 27—Little Tokyo Health Fair. Wide variety of screening services for dental, vision, hearing, podiatry, blood pressure, etc. Free flu shots. Info: (213) 680-3729.
Dec. 22—Orange County Sansei Singles Christmas Dance, Holiday Inn. Info: Joy Murosako (213) 473-8908.
- ORANGE COUNTY AREA**
Sept. 14-16—Stonebridge Productions 2nd annual Taste of Newport at Fashion Island in Newport Beach. Three day festival features food booths, entertainment. Info: call (714) 639-1007.
Sept. 15—Wintersburg Presbyterian Church, 13711 Fairview Ave., Garden Grove. Annual Missions & Outreach Food Festival to be held from 3 p.m. to 9 p.m.
Sept. 30—Orange County Sansei Singles will sponsor their annual picnic on Sunday at Liberty Park in Cerritos (Studebaker St.) from 10 a.m. - 4:30 p.m. Games, food, etc. Bento, drinks etc. will be provided, however reservations must be made by Sept. 25. \$5.50 for members, \$4 for children and \$8.50 for non-members. Info: (213) 715-6839, (818) 571-5571, (714) 528-7837.
- OGDEN, UTAH**
Oct. 27—Reunion of all Japanese families who have resided in Box Elder County, UT. Sat., at Ogden Park Hotel, Ogden. Info: Don Tazoi, P.O. Box 324, Garland, UT 84312, (801) 257-7363.
- SAN DIEGO**
Sept. 22—VFW Fundraiser, 6 p.m. Info: Kottie Uyeji, 477-4583.
Oct. 7—Food Festival, S.D. Buddhist Church, 11 a.m.-3 p.m., Info: (619) 239-0896.
- SAN FRANCISCO BAY AREA**
Sept. 29—Nisei & Retirement Update: Legal Aspects for Retirees, Nihonmachi Terrace, 1615 Sutter St., S.F. Brent Kato, L.I.B., spkr. Info (415) 731-2967.
Oct. 7—Nisei Widowed Group meeting, 2-4 p.m., Haru Baba res., Info: Elsie Uyeda Chung (415) 221-0268; Yuri Moriwaki (415) 482-3280.
Oct. 20—Japanese American Services of the East Bay Award Dinner, 6 p.m., Oakland Airport Hilton; Ichiro Nishida, dnr chair. Info: (415) 848-3560.
- SAN JOSE, CALIF.**
Present-Sept. 15—San Jose Japantown Centennial. Historical walking tour. Displays Japanese dancing. Ice sculptor from Japan. Martial arts, tea ceremony, acupressure, ikebana class, cooking

Principals Named for San Francisco JACL Fundraiser-Art Show Sept. 22 at Marriott

SAN FRANCISCO — The San Francisco JACL announced its "Art for Remembrance" benefit art show and sale is scheduled Sept. 22 at the Marriott.

Popular mixed media artist Hisashi Otsuka's works are to be featured. The evening includes a cocktail reception for patrons to meet the artist, and a dinner/dance inaugurating its Community Education Fund.

Jan Yanehiro, co-host of KPIX Evening Magazine, will emcee. "As busy as she is, Jan has always made time to support the JACL, especially the San Francisco chapter where she served on the board during her radio career at KFRC," recalled co-chair Yo Hironaka.

Both Assemblywoman Jackie Speier and San Francisco School Board members Dr. Leland Yee will be honored for their efforts in education.

The Chapter's CEF was created to perpetuate an understanding of Asian Americans' contributions and achievements. Its first project supports the San Francisco school district's first Day of Remembrance, by underwriting the development and provision of instructional materials. Approved unanimously on commissioner Leland Yee's resolution, the lessons will teach the human rights violations of the 1942 evacuation and incarceration of Japanese Americans.

The reception for Otsuka, prior to the dinner, will feature a special Napa Valley saké, produced by Kohnan, Inc., which is served cold rather than warm, according to Mike Iwasaki, president of Kohnan, Inc. And George Yoshida and his Sentimental Journey musicians will provide dance music.

Honorary co-chairs for the event are: Cressey Nakagawa, JACL National President;

Seishichi Itoh, President/CEO Union Bank; Keizo Yoshida, President/CEO Sumitomo Bank of California; Yo Hironaka and Greg Marutani, chair the dinner committee.

Chapter President Greg Marutani stated, "This is an unusual opportunity for Asian Americans to support human rights education while enjoying an evening with one of the most popular young artists in Japan or America. JACL's portion of all purchases will benefit the CEF, and are tax deductible to that extent."

Five of Otsuka's most popular works are being offered in a special pre-sale. The traditional *Spring Enchantment*, *Spirit of Musashi*, and *Red Lady*, and the neo-deco *Royal Kiss* and *When Spirits Unite* can be ordered before September 14 at deep discounts from regular prices.

Presale brochures and ordering information may be obtained from Kiyomura-Ishimoto Associates, 1906 18th Avenue, SF CA 94106, or (415) 566-3603, from 10 a.m. to 10 p.m.

For ticket info: Yo Hironaka (415) 751-1267 (eve.)

class, etc. Join us for these Centennial Events!

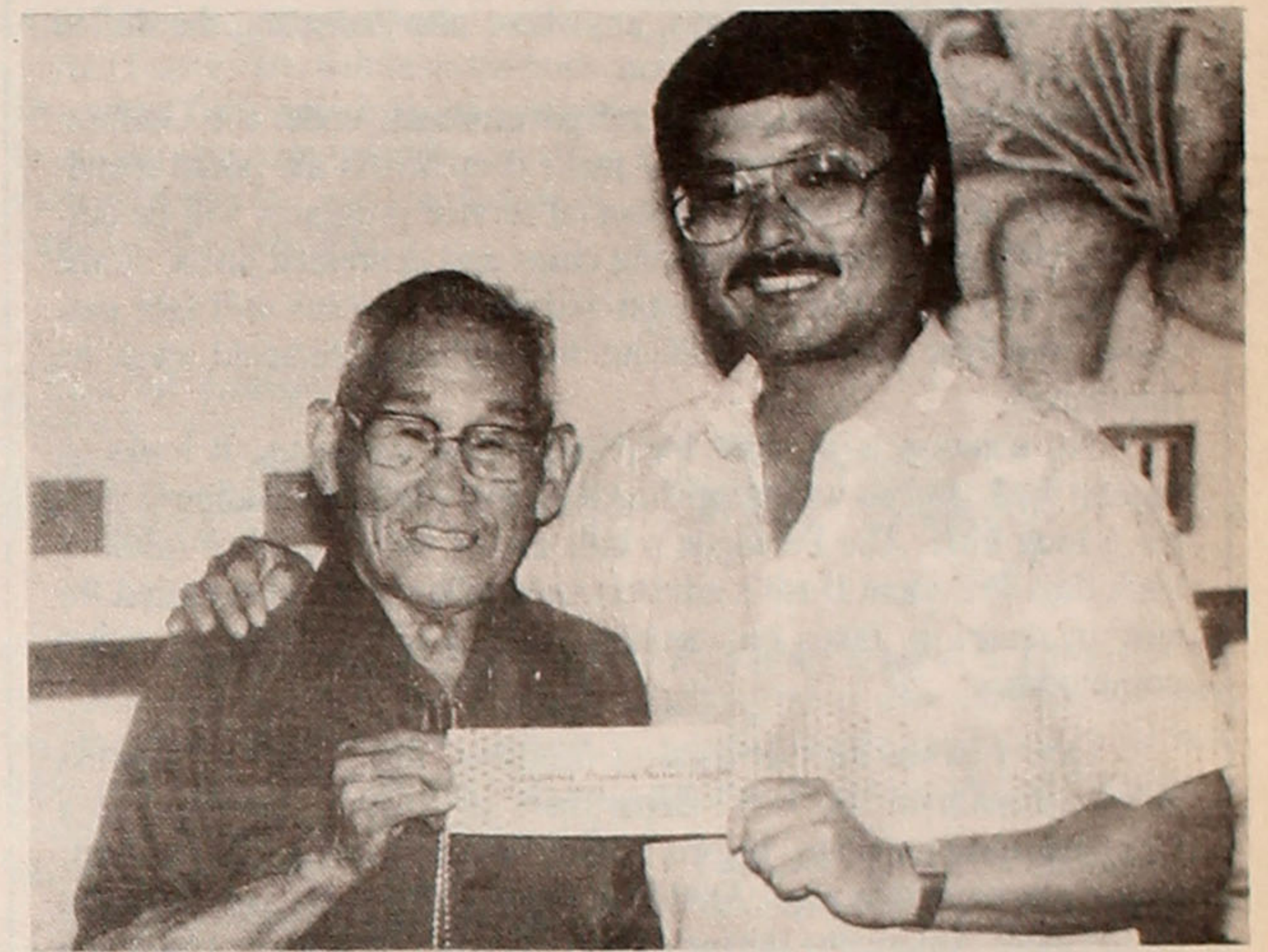
Oct. 6—Yu-Ai Kai/West Valley JACL Keiro-no-Hi dinner, San Jose Buddhist Church Annex, 4-6 p.m., (Guests aged 75 or over free), Info: (408) 294-2505.

• SAN LUIS OBISPO
Oct. 5-7—The Gila River, Arizona Camp 2 Butte High School Reunion is set in San Luis Obispo at the Embassy Suites Hotel. Registration fee of \$85 includes a Friday night mixer, dinner and dance, Sunday barbecue and a souvenir reunion booklet. For info: George Kikuchi 1340 Garrans Dr., San Jose, CA 95130, (408) 246-3511 or Haruo Hayashi (805) 489-2595.

• SEATTLE AREA
Sept. 14—"Celebrations 1990—It's Just the Beginning," dinner to honor Judge Kimi Kondo, Washington state's first Asian woman judge; Dr. Peter Ku, North Seattle Community College President, first Asian to be named president of a Washington state community college; and Wallace Loh, Dean of the University of Washington Law School, first Asian law dean in the U.S., Ocean City Restaurant, 609 S. Weller St., 5:30 p.m. Cost: \$20. Send checks to: Seattle Chinese Post, 414 8th Ave. S., Seattle 98104, before Aug. 30. Info: (206) 223-0623.

Publicity items for The Calendar must be typewritten (double-spaced) or legibly hand-printed and mailed at least THREE WEEKS IN ADVANCE. Please specify a day or night phone contact for further information.

Tell The Advertiser Where You Saw Their Ads



A HUGE SUCCESS—Kaneji Oka (left), president of Gardena Pioneer Project, receives a check for \$5,000 from Leonard Kim, owner of Cherrystones Grill and Grotto, which sponsored the June 6 benefit golf tournament for the center at Chester Washington golf course. The tournament hosted 60 players. GPP, a community service group, provides social and recreational services to Japanese seniors in the South Bay Area. It acknowledged door prizes and hole sponsors from nearly 70 individuals, businesses and organizations.

pacific citizen

941 E. 3rd St., Rm. 200, Los Angeles, CA 90013-1896 (213) 626-6936, Fax: 626-8213, Editorial: 626-3004 Circulation: 626-0047

EDITORIAL - BUSINESS STAFF:
Editor-in-Chief: Mark S. Osaki
Business Manager: Mark T. Saito
Senior Editor: Harry K. Honda
Business: Andy Enomoto, Jennifer Choe
Subscription/Circulation: Tomi Hoshizaki, Marjorie Ishii
Production: Mary Imon, Frank M. Imon

NEWS / AD DEADLINE
Friday Before Date of Issue

ALOHA PLUMBING

Lic. #440840
—SINCE 1922—
777 Junipero Serra Dr., San Gabriel, CA 91776
(818) 284-2845 (213) 283-0018



No. Calif.-W. Nev.-Pacific

- 112 **ALAMEDA (\$38-68)**—Sachie Nakamura, 1507 Chestnut St. B, Alameda, CA 94501
- 111 **BERKELEY (\$39-68)**—Yone Nakamura, 1926-A Oregon St, Berkeley, CA 94703
- 106 **CONTRA COSTA (\$39-69)**—Natsuko Irei, 5961 Arlington Blvd, Richmond CA 94805
- 119 **CORTEZ (\$36-65)**—Kathy Hagihara, 1205 N Quincy Rd, Turlock, CA 95380
- 124 **DIABLO VALLEY (\$39-67)**—Ellen Kubokawa, 5234 Pebble Glen Dr, Concord, CA 94521
- 113 **EDEN TOWNSHIP (\$36-75-68-50)**—Janet Mitobe, 21057 Baker Rd, Castro Valley, CA 94546
- 125 **FLORIN (\$39-68)**—Tom Kushi, 3909 Fotos Ct, Sacramento, CA 95820
- 121 **FREMONT (\$40-68)**—Alan Mikuni, 4487 Lancer Ct, Fremont, CA 94536
- 122 **FRENCH CAMP (\$30-60, x529)**—Hideo Morinaka, 612 W Wolfe Rd, French Camp, CA 95231
- 123 **GILROY (\$36-65, x529)**—June Muraoka, 8631 Amanda Ave, Gilroy, CA 95020
- 134 **GOLDEN GATE (\$38-68)**—Sumi Honnami, 3622 Fulton St, San Francisco, CA 94118
- 135 **HILLO (\$36-65)**—Wayne A Miyamoto, 359 Hoaka Rd, Hilo, HI 96720
- 127 **HONOLULU (\$38-70)**—Noboru Yonamine, 783 Hoolulu St, Pearl City, HI 96782
- 130 **JAPAN (W-12,000-Y-18,000; less \$2,000 no PC; TC \$17,000)**—D&S/Hautefeuille, Ke Miyachi Bldg, 201, Shirogane 4-12-15, Minato-ku, Tokyo 108
- 120 **LIVINGSTON-MERCED (\$37-69)**—Rinks Sano, 5533 S Bear Creek Dr, Merced, CA 95340
- 114 **LODI (\$37-50-68)**—Lucy Yamamoto, 600 Atherton Dr, Lodi, CA 95240
- 125 **MARIN COUNTY (\$37-67)**—Kenji Tomita, 12 Mt. Tioga Ct, San Rafael, CA 94903
- 116 **MARYSVILLE (\$38-67)**—Mae Kikuchi, 1580 Lisa Court, Yuba City, CA 95993
- 107 **MONTEREY PENINSULA (\$37-69)**—Frank Tanaka, P.O. Box 664, Monterey, CA 93942
- 126 **OAKLAND**

SAN BENITO COUNTY (\$36-65)

- 131 **SAN BENITO COUNTY (\$36-65)**—Glenn Sugiura, 1781 Sunnyslope, Hollister, CA 95023
- 101 **SAN FRANCISCO (\$40-70)**—Frances Morioka, San Francisco JACL, P.O. Box 22425, San Francisco, CA 94122; (415) 931-6633
- 102 **SAN JOSE (\$43-55)**—Phil Masumura, PO Box 3566, San Jose, CA 95136
- 105 **SAN MATEO (\$45-75)**—Gracey Kalo, 1636 Celeste Ave, San Mateo CA 94402
- 104 **SEQUOIA, INC (\$36-65, x532, y510)**—Cal Sakamoto, 4275 Suzanne Dr, Palo Alto, CA 94306
- 133 **SOLANO COUNTY (\$34-63)**—Roberto Salto, 610 Amesbury Dr, Dixon, CA 95620
- 118 **SONOMA COUNTY (\$36-66, x510)**—Somes Murakami, 2134 Laguna Rd., Santa Rosa, CA 95401
- 108 **STOCKTON (\$37-67)**—Debra Hatanaka, 8 W Canterbury, Stockton, CA 95207
- 132 **TRI-VALLEY (\$40-67)**—Hank Otsuka, 5748 Victoria Ln, Livermore, CA 94550
- 110 **WATSONVILLE (\$36-65)**—Rosie Terasaki, P.O. Box 163, Watsonville, CA 95077
- 115 **WEST VALLEY (\$36-65)**—Janet Kaku, 4970 Moorpark Ave. San Jose, CA 95129

Central California

- 207 **CLOVIS (\$36-65, x529, x10, y52-50)**—Maggie Pendleton, 8 Woodworth, Clovis, CA 93612-1034
- 209 **DELANO (\$37-70, x532)**—Takashi Kono, 454-9th Av, Delano, CA 93215-2803
- 206 **FOWLER (\$40-70)**—Tad Nakamura, 615 S Walnut, Fowler, CA 93625-9666
- 201 **FRESNO (\$41-61, x535, x512)**—Day Kusaka, 1480 N 9th St, Fresno, CA 93703-4232, (209) 264-5621
- 205 **PARLIER (\$36-65, x529)**—Irene Kozuki, 15008 E Lincoln Ave, Parlier, CA 93648-9733
- 204 **REDFIELD (\$37-64, x529)**—Stanley Iishi, 6738 S Wakelield, Redfield, CA 93645-9408
- 203 **SANGER (\$39-68)**—Lloyd Kurehara, 1807 Canal Dr, Sanger, CA 93657
- 208 **SELMA (\$40-70)**—Woody Kimura, 1250-6th Ave, Kingsburg, CA 93631
- 202 **TULARE COUNTY (\$38-67, x531)**—Stanley Nagata, 6782 Ave 400, Dinuba, CA 93618-9754

Pacific Southwest

- 308 **ARIZONA (\$37-68)**—Diane Okabayashi, 4202 W Keim Dr, Phoenix, AZ 85019
- 318 **CARSON (\$39-68)**—Ruth Sakamoto, 24402 S Doble St, Harbor City, CA 90710
- 320 **COACHELLA VALLEY (\$40-75)**—Harry Anita, 821-891 De Oro Ave, Indio, CA 92201

1990 Chart: Chapter Membership Dues

CHECK YOUR ADDRESS LABEL: Top right number shows Expiration Date
The first two digits represent the Month, the last two represent the Year.
(For example: 0590 — May 1990)
JACL Members have a 60-day grace period to renew membership through the chapter.
All other subscribers should renew immediately before the month-end cutoff.

- 310 **DOWNTOWN L.A. (\$40-70)**—Sandi Kawasaki, 1043 Bradshawe, Monterey Park, CA 91754
- 305 **EAST LOS ANGELES (\$38-69)**—Michi Obi, 111 St Albans Ave, South Pasadena, CA 91030; 213/256-8551
- 302 **GARDENA VALLEY (\$45-70)**—John/Michio Fujikawa, 1476 W 153rd St, Gardena, CA 90247
- 334 **GREATER L.A. SINGLES (\$43-79)**—Louise Sakamoto, 834 W 148th Pl, Gardena, CA 90247
- 329 **GREATER PASADENA AREA (\$48-81)**—Bob Uchida, 852 S Los Robles, Pasadena, CA 91106
- 338 **HIGH DESERT (\$60-100; over-65, \$50)**—Amy Yanagihara, 42947 Victorville Pl, Lancaster, CA 93534
- 311 **HOLLYWOOD (\$36-65)**—Toshiko Ogita, 1937 Caminito de la Valle, Glendale, CA 91208
- 325 **IMPERIAL VALLEY (\$38-70)**—Hatsuo Morita, 1851 Haskell Dr, El Centro, CA 92224-3508
- 328 **LAS VEGAS (\$36-65)**—Chiyo Goto, 1316 S 8th St, Las Vegas, NV 89104
- 326 **LATIN AMERICAN (\$37-65)**—Rosa Miyahira, 1019 W Oban Dr, P.O. Box 65682, Los Angeles, CA 90065
- 317 **MARINA (\$42-72, x538, x515)**—Diane Tanaka, P.O. Box 9568, Marina Del Rey, CA 90295
- 337 **NIKKI LEADERSHIP ASSOCIATION (\$39-74)**—Mie Matsuoaka, 5315 Colony Way, Agoura Hills, CA 91301
- 327 **NORTH SAN DIEGO (\$37-67)**—Hiro Honda, 1328 Magnolia Ave, Carlsbad, CA 92008
- 303 **ORANGE COUNTY (\$44-74, x529, x510, y52-50)**—Betty Oka, 13228 Ferndale Ave, Garden Grove, CA 92644
- 315 **PASADENA (\$39-75)**—Akiko Abe, 1850 N Arroyo Blvd, Pasadena CA 91103
- 333 **PACIFICA/LONG BEACH (\$36-67)**—Jim H. Matsuoaka, 509 Kingsford St, Monterey Park, CA 91754
- 330 **PROGRESSIVE WESTSIDE (\$36-65)**—Toshiko Yoshida, 5156 Sunlight Pl, Los Angeles CA 90016
- 323 **RIVERSIDE (\$37-66)**—Michiko Yoshimura, 2911 Armstrong Rd, Riverside, CA 92509
- 304 **SAN DIEGO (\$37-69)**—Wendy Shigenaga, P.O. Box 2548, San Diego, CA 92112; (614) 230-0314

- 401 **SEATTLE (\$40-74)**—Lynn Uehara, 11405 S.E. 66th Renton, WA 98056
- 406 **SPOKANE (\$36-65)**—Ada I Honda, 618 S Sherman, Spokane, WA 99202, (509) 624-3027
- 407 **WHITE RIVER VALLEY (\$36-65, x529)**—Edith Watanabe, 11114 51st Ave So, Seattle WA 98178
- 319 **SANTA BARBARA (\$45-70)**—Reiko Uyesaka, 1236 E. De La Guerra St, Santa Barbara, CA 93103
- 321 **SANTA MARIA (\$39-70)**—Sant Iwamoto, 605 E Chapel St, Santa Maria, CA 93454
- 307 **SELANOCO (\$42-72)**—Evelyn Hanki, 12381 Andy St, Cerritos, CA 90701
- 316 **SOUTH BAY (\$42-72)**—Ernest Tsujimoto, 2047 W 169th Pl, Torrance, CA 90501
- 336 **SO. CALIF. ASSN. OF NIKKEI (\$39-74)**—Nan Takahashi, 12757 Culver Blvd, Los Angeles, CA 90066
- 335 **TORRANCE (\$39-70)**—Membership Chair, P.O. Box 7506, Torrance, CA 90504
- 309 **VENICE-CULVER (\$40-72, x510)**—Betty Yumori, 11156 Lucerne Ave, Culver City, CA 90230
- 322 **VENTURA COUNTY (\$45-70)**—Morris Abe, 2650 Pheasant Hill Rd, Camarillo, CA 93033
- 301 **WEST LOS ANGELES (\$44-83, x515, y515)**—Kyo Teramaye, 2738 Barrington Ave, Los Angeles, CA 90064
- 314 **WILSHIRE (\$46-50-88)**—Alice Nishikawa, 234 S Oxford, Los Angeles, CA 90004; (213) 384-7400

Japanese American Citizens League - 12-15-89

NATIONAL HEADQUARTERS: 1765 Sutter Street • San Francisco, California 94115 • (415) 921-5215
REGIONAL OFFICES: Washington, D.C. • Chicago • San Francisco • Los Angeles • Seattle • Fresno

JOIN THE JACL NOW! Take advantage of our first year
Introductory Membership through National JACL Headquarters

INDIVIDUAL (\$36) FAMILY COUPLES (\$65)
— or you may want to join —
 1000 CLUB (\$60) CENTURY CLUB (\$120) STUDENT (\$12)

NAME: _____
ADDRESS: _____
CITY, STATE, ZIP: _____
CHAPTER / AREA PREFERENCE: _____
Please make checks payable to: NATIONAL JACL
Mail to: JACL HEADQUARTERS
Membership Dept.
1765 Sutter St.
San Francisco, CA 94115

Thank you for your support!
You will be receiving the Pacific Citizen,
our weekly newspaper shortly!

THE PACIFIC CITIZEN

(ISSN: 0030-8579)
 941 E. 3rd St., #200, Los Angeles, CA 90013-1896
 (213) 626-6936, Fax: 626-8213, Editorial: 626-3004

The Pacific Citizen is published by the Japanese American Citizens League, 941 E. 3rd St., #200, Los Angeles, CA 90013-1896, weekly except the first week of the year, biweekly during July and August, and semi-monthly in December. ■ Annual Subscription Rates — JACL Members: \$12.00 of the national dues provide one year on a one-per-household basis. Non-Members: 1 year — \$25, 2 years — \$48, payable in advance. Additional postage per year—Foreign: US\$13. Air mail—U.S., Canada, Mexico: US\$30; Japan/Europe: US\$60.

National Headquarters, 1765 Sutter St., San Francisco, CA 94115, (415) 921-5225

The news and opinions expressed by columnists other than the National President or National Director do not necessarily reflect JACL policy.

Second Class Postage Paid at Los Angeles, Calif.

POSTMASTER: Send Address Change to Pacific Citizen, 941 E. 3rd St., #200, Los Angeles, CA 90013-1896

EDITORIAL OF THE PACIFIC CITIZEN

A Scenario for October 1

Consider this scenario. It is late September, a beautiful time of year, but all is not well across the land.

Congress, bogged down by politics, fearful of the prolonged Persian Gulf crisis, wary of recession or even an economic depression, seems paralyzed and unable to agree by the deadline of Oct. 1 on a budget that comes anywhere near trimming the deficit by the target figure of \$64 billion.

Without such cuts the federal government, under the Gramm-Rudman-Hollings directive, must make deep across-the-board spending reductions. Relief and other social service programs will be curtailed, bringing further woe to big cities and depressed areas. Some airports will be closed. Education and health services will face cut-backs. Federal prisoners will be furloughed. Medicaid may be threatened.

No solution is in sight for Middle East problems. It looks as though U.S. forces will be in Saudi Arabia and surrounding waters for a long time. The Pentagon's bills mount by the tens of millions each day. President Bush's advisers now talk openly of the need for stiff increases in taxes on incomes, fuel, airline tickets and other commodities.

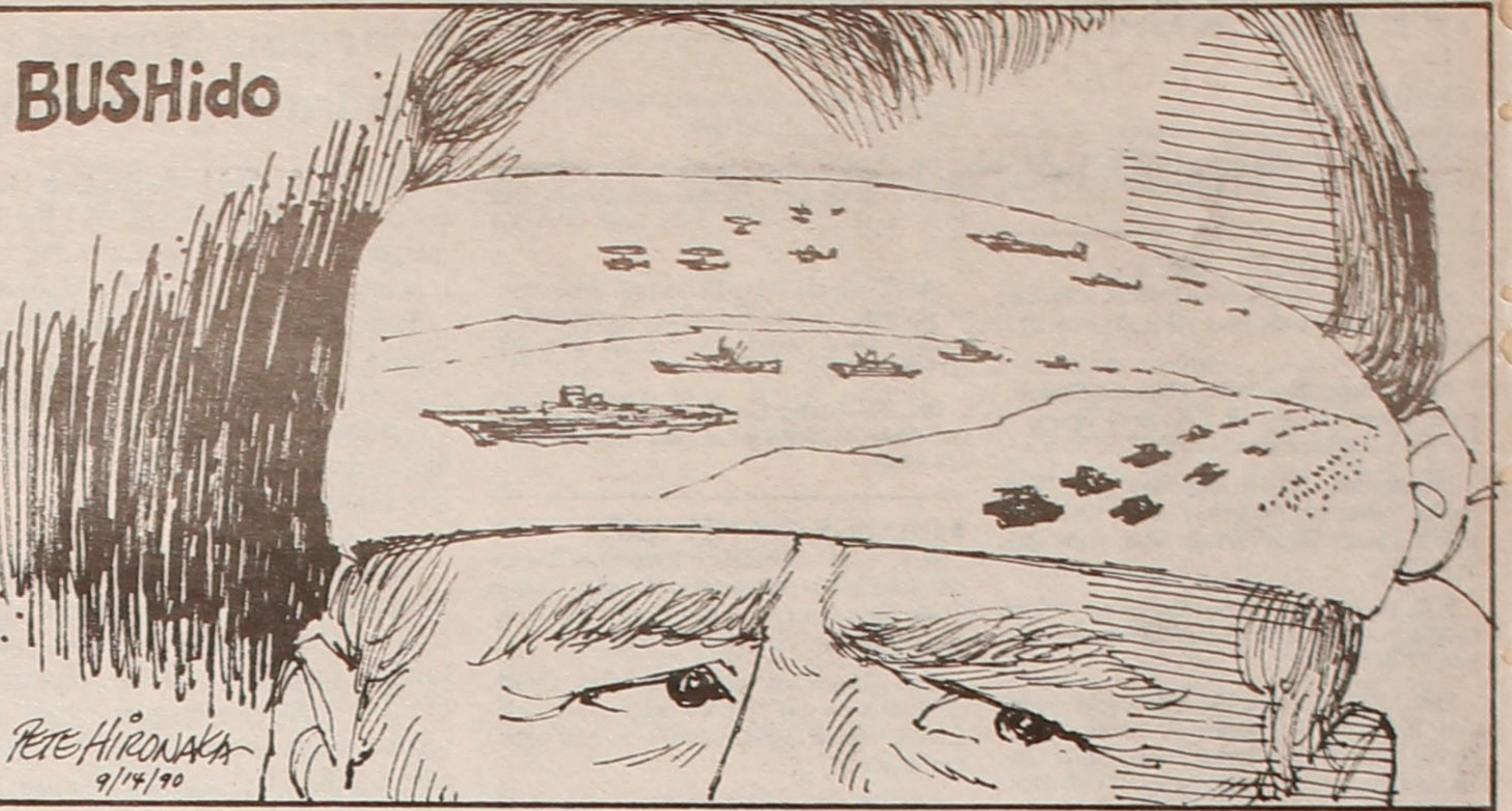
Oct. 1 poses another kind of deadline. The Office of Redress Administration in the U.S. Department of Justice, carrying out a Congressional mandate, begins mailing Redress checks to the frail, oldest survivors of a great American tragedy, the mass imprisonment of Japanese Americans during World War II. The checks constitute but token recompense for a terrible injustice for which the U.S. government has apologized, and are long overdue.

Some \$500 million will be distributed the first year, and the total payment will be but \$1.2 billion, a pittance compared to the treasury funds flowing out for other national needs. But government money going directly to some individuals citizens will attract notice, not all of it favorable, at a time when all are being told they must dig deeper to pay the government's bills.

The beginning of Redress payments was to be a time of rejoicing, an opportunity to help Americans understand the cost of injustice, an occasion for pride that the United States was noble enough to admit its mistakes and take measures to assuage them.

Unfortunately the hate and hysteria that led to the evacuation and imprisonment of an ethnic minority in 1942 has only diminished; it has not been eradicated despite the exemplary conduct of Japanese Americans. Extensive publicity for Redress at this particular time in history has the possibility of reviving the bigotry, fanning the hate.

This is not to suggest any change in the course of the Redress program, an entitlement delayed too long. There can be no doubt about that. But second thoughts about how we celebrate our victory for justice may be in order.



FROM THE FRYING PAN

BILL HOSOKAWA

Historical Plaza by the Willamette

Without doubt the most impressive part of the Greater Portland Reunion, reported on in this space last week, was the dedication of the Japanese American Historical Plaza on the banks of the Willamette River only a long stone's throw from the heart of the city.

It was a clear, sunny morning and the crowd jammed the Plaza long before the announced time. This was to be a day of rejoicing and significance. In his gentle, understated comments in the commemorative booklet, Henry Sakamoto, president of the Oregon Nikkei Endowment, put it far better than I can:

"Until now, no major U.S. city has created a prominent memorial to honor its Japanese-American citizens, and to acknowledge the tragedy of the wartime internment.

"Today, Portland, Oregon's Japanese American Historical Plaza breaks new ground in opening greater public awareness about the diversity of cultural experiences in America. The Japanese-American experience is one worth knowing about, a unique story that evokes a deep appreciation of the freedoms granted to all Americans by their Constitution's Bill of Rights.

"The Japanese American Historical Plaza tells much of its story in bronze relief and engraved poetry. But in keeping with the Japanese tradition, the landscape itself tells a story. Walk along the south end of the stone wall toward the north, following the flow of the Willamette River, and consider the history of Japanese-Americans from the early Issei immigrants to the new generation today. Then, walk from the bronze columns toward the River, and remember the Bill of Rights and the internment that should never have happened.

"The Japanese American Historical Plaza was designed to speak to its visitors, affirming ideals that are among the highest of the nation. Hopefully, it will in some way speak to you."

At the time Issei pioneers and their young offspring lived in the Burnside area not far from the present Plaza, the Willamette's banks were lined with run-down warehouses and rotting boat landings. Civic pride would not let it remain that way. The land was cleared and reclaimed as the Tom McCall

Waterfront Park, named after the militantly environmentalist governor.

To win a large and desirable section of the park for the Historical Plaza was a coup for Japanese Americans and a tribute to the civic status they have gained since their return from the wartime camps. Bill Naito, finance chairman, and his brother Sam are major real estate developers. George Azumano, whose travel agency is said to be Oregon's largest, has been eminently successful in promoting tourism for the state. Lawson Inada, whose spare, Haiku-style poetry along with that of Hisako Saito and the late Shizue Iwatsuki graces the Plaza, teaches English at Southern Oregon State College. Robert Murase's firm was the landscape architect. Jim Gion created the sculpture towers. Masatoshi Izumi was the stonemason. There are many more.

If Oregonians can look into the past, they also look far ahead. The Oregon Nikkei Endowment, the entity that sponsored the drive for the memorial, is pledged to raise a minimum of \$100,000 to be placed in trust for its perpetual maintenance.



EAST WIND

BILL MARUTANI

The Sergeant and the 'Hiki-Agés'

UPON JAPAN'S SUDDEN capitulation in August 1945, its military forces in various parts of the Pacific found themselves isolated. The largest body of such military men were in China, principally in Manchuria which the Japanese had been colonizing since at least the mid-1930's. With the end of the Pacific War, these Japanese colonists, and ultimately the military servicemen, were being repatriated back to Nippon—the hiki-agé-sha's or "repatriates." The Chinese Communists, although competing with the forces of General Chiang Kai-shek, already controlled large segments of China. These Communists were intent upon forging post-war Japan into another Communist satellite; toward this end an overall program of brain-washing the Japanese colonists and Japan's Manchurian forces, had been formulated and was being implemented. We were later to confirm that the Communists had comprehensive plans to establish cells in strategic regions throughout Japan.

To meet this threat, one of the steps taken by American military forces was to set up intelligence screening teams at key entry ports to Japan, namely Sa-

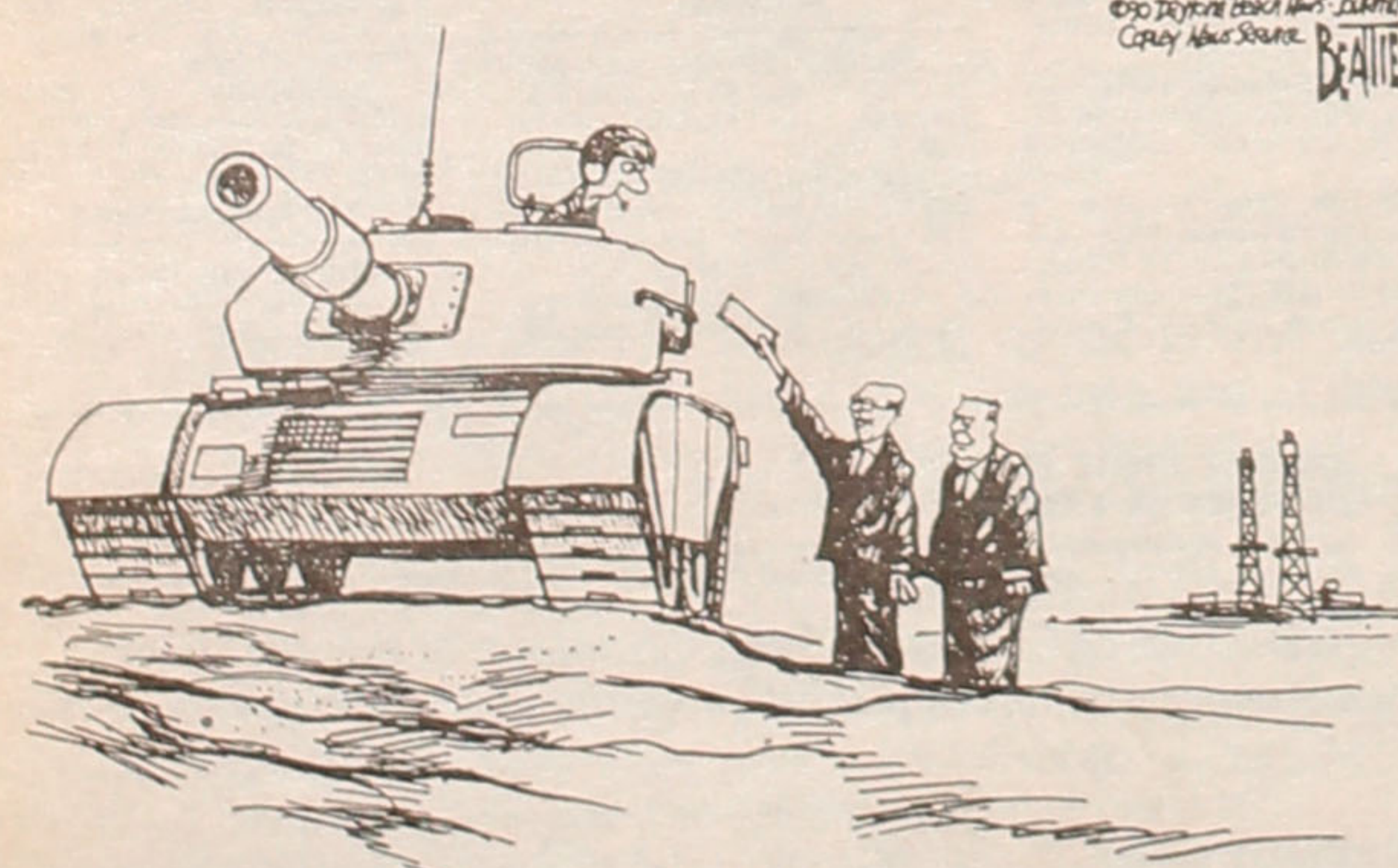
sebo ("Hario") in Kyushu and Maizuru port in Shimane-ken.

TRAINED COMMUNIST agents were being sent through with the hiki-agéshas and the teams' objective was to ferret out such agents and elicit as much secret data as possible. Often British Intelligence was involved with

the Americans in this venture. As the questioning and screening proceeded, bits of information, which initially seemed inconsequential, would ever so slowly begin to give a hint of what the overall Communist organizational

Continued on Page 10

MONITOR

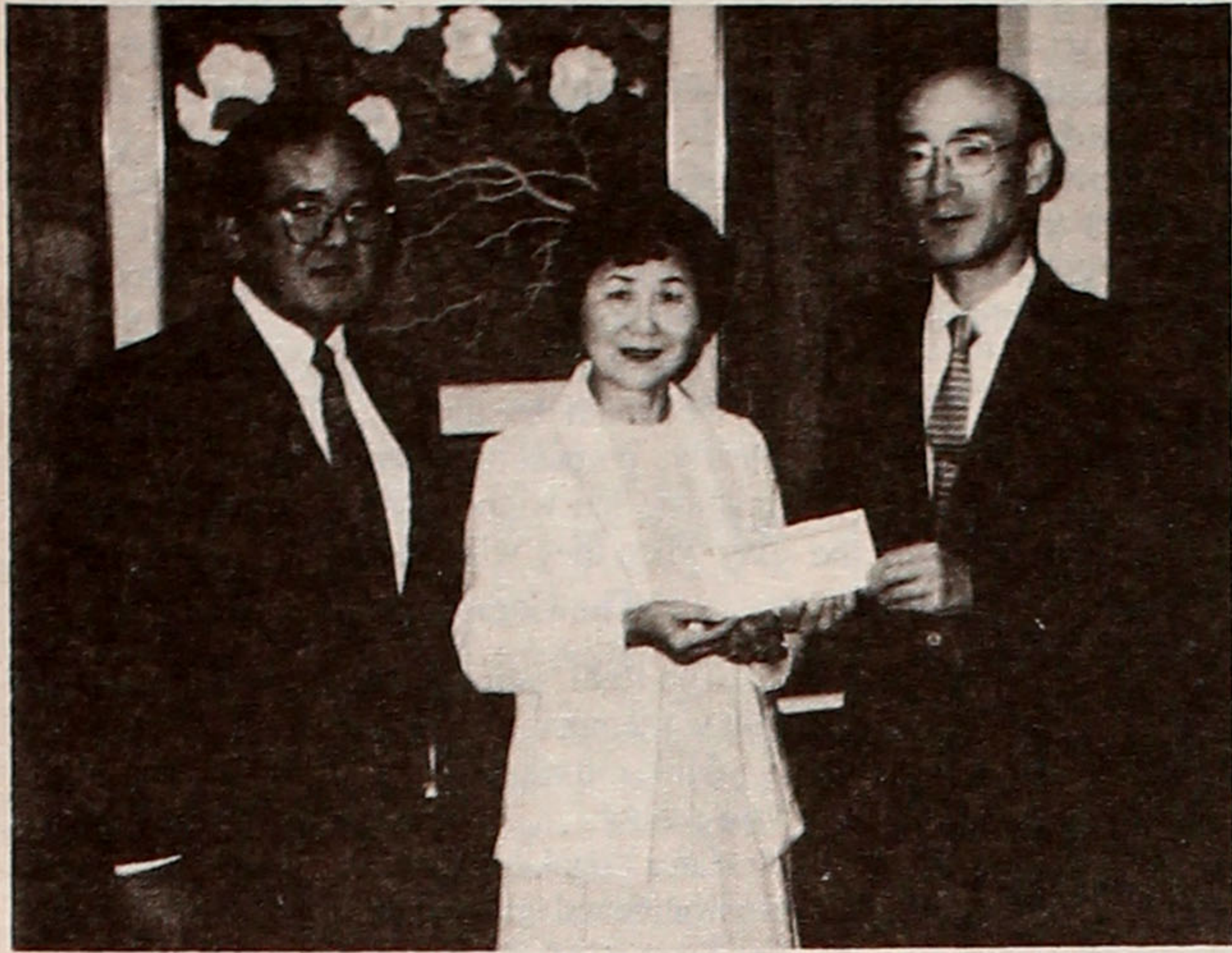


"As allies, we felt we had to share the burden of America's military commitment. Here's a \$600 rebate coupon for your next Toyota or BMW."

Beattie—Daytona Beach News-Journal

Readers wishing to send items to the Monitor should address their submissions to the P.C. Editor.

Sumitomo Bank of Calif. Announces Its 1990 \$1,000 Scholarship Winners



Accepting a \$1,000 scholarship is Mrs. Aiko Mikami of Lodi for her son Jason, now at UC Berkeley, from Sumitomo Bank of California officials, Howard Miyashiro (left) vice president and deputy manager, and Takashi Yamamori, vice president and manager of the bank's Sacramento office. (These scholarships by Sumitomo Bank are made annually through the JACL.)



Robyn Kimura, June graduate of La Jolla High, holds \$1,000 scholarship award while her parents, James and Dorothy Kimura (at right) of San Diego, and Tadao Komuro (left), vice president and manager of the bank's San Diego office, look on.



Susan S. Matsui of Los Angeles, graduate student at USC Law Center, receives a \$1,000 scholarship from Clyde Furumoto (left), vice president and general manager of the bank's Los Angeles main office. At right is Frank Omatsu, public relations consultant and among the first Nisei to be employed by the bank after World War II.

AYA SANSEI

A Change in Kabuki?

Editor's Note: During World War II a writer signing herself Ann Nisei presented the feminine viewpoint from time to time to *Pacific Citizen*. Now her spiritual daughter will be writing occasional columns under the pseudonym Aya Sansei.

I imagine my dilemma. Here I am, an art-loving devotee of the theater and advocate of feminine rights, and a booby trap blows up right in my face.

It happened at the Japanese American Theatre in Li'l Tokyo when the Grand Kabuki troupe staged 'Osome Hisamatsu Ukina no Yomiuri.' It is a classic kabuki play about faithless love and double suicide in the best of Japanese dramatic tradition.

The star of the play is Nakamura Kotaro V, one of the bright young art-

ists of kabuki. In fact, he is so good that he plays four parts. One of them is Hisamatsu, an apprentice in a pawnshop and, as it turns out, the faithful lover.

Kotaro—kabuki actors are known by their first names—also plays the parts of Omitsu who is Hisamatsu's fiancée, a young woman named Orok, and an evil older woman named Orok.

By now you should be getting the drift. Kotaro is a male and a very attractive one. It's natural that he plays a male role. But he also plays the parts of not one, not two, but three women. All in a single play. Not farcical comedy roles, but serious dramatic parts. Why should he do this? Why shouldn't

Continued on Page 10

BY THE BOARD

TOM T. NAKAO JR.
National JACL Secretary / Treasurer

JACL's Critical Campaign After Redress

As you may or may not know, the National JACL is currently in the midst of its most critical undertaking since the Redress effort began 12 years ago. We are attempting to create a "legacy" for our children, our grandchildren, and for generations to come.

Our goal is to raise \$10,000,000 over a three-year period, commencing in October, 1990. While this might seem like an unattainable goal to some, much like our chances for success in the Redress effort just five years ago, it really isn't. All you need to do is to break those numbers down. Once you do that, that goal doesn't seem that far away.

For instance, if only 20,000 of the estimated 65,000 recipients contributed on the average of 2.5% or \$500, we would achieve our goal.

On the surface, it seems like a small price to pay for an investment in the future of our children and their children. With an endowment of this significance, we will be able to carry out the mission of the JACL from the earnings alone. This will enable us to eliminate

our need to continually raise our dues in order to fund our growth. It will also enable us to do our forecasting around a stable income flow, which in turn, makes it much easier to implement our program for action.

Just as in Redress effort, there will always be the question of, why? And just like our struggle for justice in that effort, the answer is that we must never let anyone forget! Without our strong national presence, who will be make sure that this will never happen again? Who will continue to the fight against anti-Asian violence? Who will monitor the civil rights arena, so that the rights of not only Japanese Americans are protected, but all Americans? Who will work to assure that our history books accurately reflect the Japanese and Asian American experience?

And finally, who will be on the front-line when the "Japan bashing" begins to impact our communities directly, especially with the 50th anniversary of Pearl Harbor coming up?

It doesn't matter if you're a member of JACL or not. If you're a member of the Nikkei community, you're affected by the work that the JACL does. Even though the JACL membership is only 25,000, over 65,000 people will be affected by the JACL's work over the next three years, as the Redress monies are paid out. And even though many people believe that this is a reality only because of some astute political maneuvering in Congress and elsewhere, the fact remains that we would have never gotten to this point were it not for the hard-working volunteers in the JACL.

So, like it or not, the JACL is out there working for ALL of us, regardless of our membership affiliation. Help to us improve on our service to the Nikkei community by working with us to establish the Legacy Fund.

Remember! The definition of a legacy is "something that is handed down from someone who has gone before." Keep our past alive by perpetuating our future.

Contemplations from a JACLer in Japan:

On the Meaning of 'Ethnicity' and 'Race'

By William Wetherall

TOKYO

What's in a word like "ethnicity" or "race"? Not a lot, judging from how such terms are being trivialized in academia and media. Even within JACL and the Pacific Citizen.

Take, for example, JACL president Cressey Nakagawa's article in the June 19 issue of PC on the racial violence against two Japanese students in La Crosse, Wisconsin in April.

Nakagawa wrote: "as second, third and fourth generation Japanese Americans, the fact that these victims happened to be of our own ethnicity should serve as chilling reminder."

Of our own ethnicity?

Nakagawa writes as though he believes that there exists a singular and equivalent ancestral ethnic connection between Japanese tourists in the United States and Japanese Americans. Even if this were correct, because Japanese Americans would represent a branching off from the Japanese ethnic tree, the connection would have to be described in the opposite direction: not "these victims happened to be of our own ethnicity", but rather "we happen to be of these victims' ethnicity".

But I question the implication that there is either a singular or an equivalent ethnic connection between Japanese Americans and Japanese. I would argue that Nakagawa has stretched the word "ethnicity" so thinly that it has lost all its objective anthropological meanings; and that his usage of the word conveys only superficial racial sentiments that are at best romantic, at worst dangerous.

* * *

Let me tell a story that illustrates what I am trying to say.

On Dec. 10, 1988, I was both a speaker and a panelist at a symposium, in Osaka, on International Human Rights and Koreans in Japan, to commemorate the 40th Anniversary of the United Nations Universal Declaration of Human Rights.

The other participants were Japanese in Japan, Koreans in Japan, Koreans from the Republic of Korea, a Korean Chinese citizen from the People's Republic of China, and a Korean scholar from the United States, who compared the treatment of Japanese Americans in the United States with the treatment of Koreans in Japan, with a focus on compensation. Every possible group that claims to have been a victim of

Japanese imperialism and World War II in Asia, from former colonial subjects to Hiroshima and Nagasaki survivors, have deservedly and otherwise been inspired by the redress movement—but this is another story.

The main purpose of the symposium was to illuminate the legal and social problems of Koreans in Japan in the light of the experiences of other witnesses of the Korean "diaspora" (as it has become fashionable to call the worldwide migration of Koreans), and of other minorities in Japan. Indeed, one of the sponsors was a foundation that promotes the study and global networking of overseas Koreans.

My role was to talk in general about Japan's many ethnic groups. But in keeping with my skeptical views of the ethnic minority industry, I also questioned the unexamined ideological assumptions behind the kinds of ethnic movements that were represented at the symposium.

While everyone else was talking about "the Korean race" this and "Korean ethnicity" that, I wondered aloud what, if anything, a third generation Japanese of Korean ancestry, a third generation Chinese of Korean ancestry, a third generation Korean resident of Japan or Japanese of Korean ancestry, and a Korean from anywhere on the Korean peninsula (just for a starter) have in common that warrants collective (singular and equivalent) ethnic and racial labels. I could think of nothing—not native language, not primary social or communal or cultural experience, not religion or politics—not even, in many cases, genes or surname.

Among Koreans and non-Koreans of Korean descent outside the Korean peninsula, interethnic and interracial marriages are common, just as they are within Japanese American communities, I said.

Also as with Japanese American communities, I added, Koreans in Japan, and Japanese of Korean ancestry, will not survive as "groups" unless they renounce their unattested claim to having a common ethnicity or raciality with their alleged "ancestral" countries, and declare themselves to be multiethnic and multiracial communities.

Scrutiny of the ethnic and racial diversity of Japan and the two Koreas shows, in any case, that their populations are ethnically, and racially "homogeneous" only in myths. The realities of heterogeneity also show that ideologies of homogeneity are main-

tained at the expense of minorities, including those who emigrate and thus contribute to the ethnic and racial variety of their immigrant communities.

Take, for example, Okinawans. "Okinawa demo Nippon demo" [In both Okinawa and Japan] began the headline of an article in the August 8 issue of the Japanese weekly Magazine SPA!. This will interest San Diego JACLer Damon Senaha, whose paternal grandparents migrated from Okinawa to America.

In a letter in the June 15 issue of PC, Senaha objected to the wording in an article in the May 4 issue, in which one woman was said to have been born in "Hiroshima, Japan", another in "Okinawa", and a third in "Fukushima, Japan"—as though Okinawa was not a part of Japan.

"Okinawa and Japan"—is a common example of linguistic exclusion. "America and Hawaii" is another. These are on a par with expressions like "Japanese and blacks" and "Japanese and whites", which racialize "Japanese" and falsely imply that "blacks" and "whites" are not, and cannot be, Japanese.

For what it's worth, there is small print above the characters for "Okinawa" and "Nippon" in the SPA! article headline, showing that the words were meant to read "Uchinaa" and "Yamato". The article was about an Uchinanchu (Okinawan person) singer who wanted Yamatuncho (Yamato person) audiences to appreciate Okinawan music sung in Okinawan.

What this means is that there are some Okinawans who want the world to know that Okinawa became a Yamato colony. As a state, Japan has 47 prefectures, and Okinawa is one of them. But Japan is not only a state; it is also a country whose boundaries are defined by the eye of the beholder. And for some beholders in Okinawa (as well as for some Ainu beholders in Hokkaido and elsewhere), "Japan" may signify the "Yamato" state that they regard with suspicion.

The point is that, the ethnic problems which embroiled Senaha's Okinawan grandparents are still around, and testify to the absurdity of the notion of ethnic uniformity within Japan, to say nothing of Japanese American communities.

At the end of his article, Nakagawa writes: "On behalf of the JACL, my

Continued on Page 10

The Best and the Brightest of the Class of 1990

By Teresa Maebori
JACL Scholarship Committee Chair

The best and brightest aptly described the 40 winners of the 1990 National JACL Scholarships. The National JACL Scholarship Committee read through 279 applications from mid-May until the end of June.

We were impressed by the high caliber of this year's winners. Several in the incoming freshman class were National Merit Finalists; they were active in their schools as student body presidents, school newspaper editors, captains of their tennis team, exchange students, violinists in their orchestras, volunteer tutors and/or soup kitchen workers, teachers in their churches, active in Asian-American clubs, and knowledgeable about Asian American issues.

At the undergraduate level the winners were multi-faceted. There were those who had double majors and many who were on the Dean's List at their colleges. There was a keen interest in studying Japanese and in attending a university in Japan, in volunteering at hospitals, in tutoring students in local schools and in participating actively in student government.

At the graduate level the students were a

diverse lot. They ranged from aspiring physicians, to professors, to an international business negotiator, to real estate developer, to a biomedical researcher. Impressive about the graduates was their level of participation in the community. Several had served on JACL boards and held offices, others were environmental activists, some had published books or articles on Japanese American history and experience.

Committee's Criteria

The committee used the criteria of (1) scholastic achievement, (2) school and community activism, (3) the applicant's personal statement and (4) a recommendation to select the final winners. We also were searching for students who not only distinguished themselves scholastically but who demonstrated a commitment to the community.

In many of the winner's essays, they spoke of ethnic pride, of the importance and influence of their families, of helping others, and of elucidating and improving the Japanese American experience. Making the final decision on the winners was often difficult because many

of the applicants were deserving and remarkable—not just in one area—but in several. We on the committee had the privilege of seeing the national spectrum of our youth. We felt proud of these young Japanese Americans and their prospects for success in their chosen fields and as future leaders.

It should be noted that this was a national competition. Thus in addition to the monetary award, foremost was the honor and prestige of being selected among the finest students the Japanese American community had to offer.

Judging Process

The five members of the committee worked diligently for a month and a half reading all the applications. Each application was reviewed at least three times. The finalists were read by each committee member. We met four times and worked late into the evening. By the end, we were heartened and inspired by the winners.

Often heard from JACL members in different chapters were the questions: Where are our youth and how can we get them involved? In these winners we saw that the level of their involvement was outstanding, that JACL has

a young constituency that is vibrant, distinguished, and thoughtful. We hereby recommend that we ask the winners how JACL can involve them and address their needs better.

When the committee had finished, we realized that the future for Japanese Americans was bright and that many of the ideals instilled in the youth by their families were burning clearly, purposefully, and strongly. We congratulate the winners and look forward to the day when they will lead us.

The Committee Members

The 1990 National JACL Scholarship Committee members were:

Miiko Horikawa, MSLS, librarian in a private school.

Jane Nogaki, MA, former English teacher, environmental grassroots activist, member of the League of Women Voters and mother of two college-age students.

Herbert Horikawa, Ph.D., director of the counseling center at Temple University.

Hiroshi Uyehara, engineer (retired), 1989 National JACL scholarship committee chair.

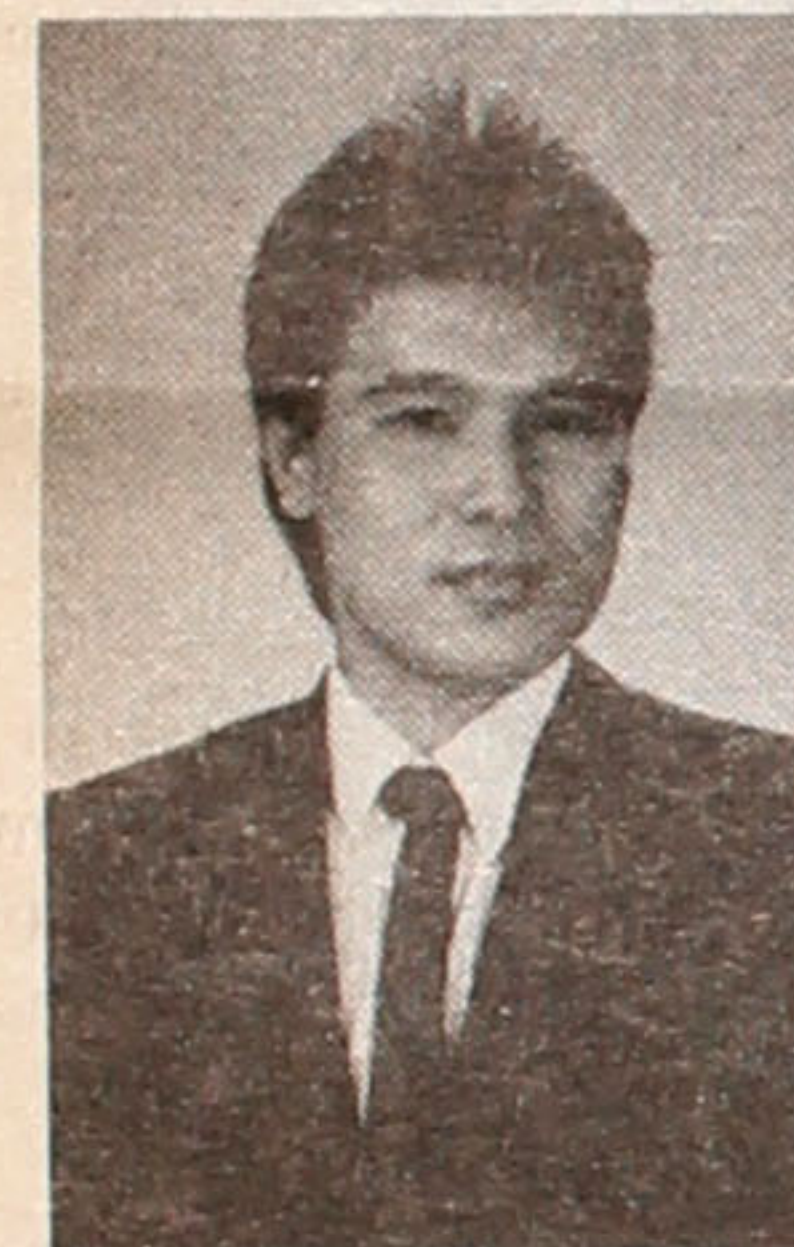
Teresa Maebori, MA, teacher, 1990 National JACL scholarship committee chair.

DENTAL

Dean Arashiro

DR. KIYOSHI SONODA MEMORIAL GRADUATE DENTAL SCHOLARSHIP
 Honolulu, Hawaii
 Chapter: JACL National Associate
 University of Iowa School of Dentistry

Dean Arashiro wishes to alleviate our fear of going to the dentist. "Visits to the dentists are ranked among the most fearful experiences known.



I attribute this fear to previous experiences because of the fact that many people just see their dentists when their tooth starts to hurt and therefore it is too late to prevent the problem. I wish to rid people of this fear of going to the dentist by stressing prevention in my practice."

Dean has been described as a conscientious student who is known to show high regard for his patients welfare. He hopes to stress preventative care in his practice. "I plan to educate parents about the importance of the care of their child's teeth before they begin to erupt. By starting the visits early in the child's development it is possible to have the next generation of young children that are caries (cavity) free by the use of preventive dentistry."

PERFORMING ARTS

Lisa Lane

AIKO SUSANNA TASHIRO HIRATSUKA MEMORIAL PERFORMING ARTS SCHOLARSHIP

Parents: Taeko and Christopher Lane
 Novato, California
 Chapter: Fowler

"My entire life has been filled with music and it has been more than just black ink on a music line page. There is a sense of feeling that I had to learn



on my own because it cannot be taught. This ability to express emotions in music and my experience with music has helped develop my mind and spirit as well as influence many aspects of life."

A gifted pianist, Lisa Lane is also known for her musicianship in oboe and percussion. She has played first chair oboe and percussion

with the Sonoma County Youth Symphony. She also participates in performances for senior homes in her community.

A straight A student ranked first in her class, she has also distinguished herself as a scholar athlete. In her senior year she played on the varsity basketball team which made the California State quarter finals. Lisa has also been active in her community, working

as a counselor for 4-H camp and serving on the City of Novato Parks and Recreation Commission as commissioner. She will attend Dartmouth University this fall.

GRADUATE

Bruce Ito

HENRY AND CHIYO KUWAHARA GRADUATE SCHOLARSHIP
 Los Angeles, California
 Family member of Boston JACL Chapter
 School: University of Southern California

"My personal history has been deeply enriched by my heritage. Achievement does not mean merely academics to an Asian-American, but also achieving a sense of self-worth through the interweaving of culture and American experience, an obligation to the Asian community and the community at large."

Bruce Ito has been actively involved in Asian American student activities during his graduate studies at USC. He has been involved with Asian Pacific Student Services at USC, the Asian American Leadership Development Project and the Asian American Drug Abuse Project. In addition to campus activities, Bruce has also been involved in a large number of community service projects. Utilizing his strong communications skills he has interned with the American Diabetes Association and is currently working to help AIDS patients write their memoirs.

Bruce states that he is deeply committed to achieving two goals at the University of Southern California. "First to help establish an Asian American Studies Department, and secondly, to increase Asian American enrollment in my program of study, communications management at the Annenberg School of Communications at USC. Currently, I am the only Asian American enrolled in a program of over 200 students."

Leslie Kanda

HENRY AND CHIYO KUWAHARA GRADUATE SCHOLARSHIP
 Chico, California
 Northwestern University School of Medicine

This summer Leslie Kanda is working at an orthopedic clinic at Black Lion Hospital in Ethiopia. She is currently assisting Dr. Donald Mangus



perform needed surgeries and also hopes to teach residents and students at the clinic.

Leslie Kanda's goal is to become a physician in a university setting, practicing medicine and participating in the education of residents and medical students. "I aspire to be a role model for females and minorities and would like to be a leader of the health care delivery system of our country."

Presently Leslie attends Northwestern University School of Medicine and serves as Legislative Affairs Director for Northwestern's American Medical Student Association. She is also taking courses at the Northwestern's Graduate School of Management and is considering pursuing a com-

binated M.D. and M.M. (master of management) degree.

Susan Matsui

SUMITOMO BANK OF CALIFORNIA GRADUATE SCHOLARSHIP
 Los Angeles, California
 School: University of Southern California

Susan Matsui is currently working on a Juris Doctor/Master of Business Administration degree at the University of Southern California, concentrating on corporate law and international business. Last summer she worked as an intern at the Asian Pacific American Legal Center of Southern California where she received recognition for her research on the state of the law regarding Chinese students who did not wish to return to the People's Republic of China after the June 4 Tienanmen Square massacre.

Utilizing her Japanese language skills, she also assisted clients with immigration problems and organized an immigration law outreach workshop for the Japanese community.

This summer Susan received a Judicial Externship to work with Federal District Court Judge Ronald Lew. She hopes to pursue a career in international corporate law.

Paul Matsumoto

CHIYOKO AND THOMAS T. SHIMAZAKI MEMORIAL GRADUATE SCHOLARSHIP
 Decatur, Georgia
 Chapter: Washington, D.C.
 School: Emory University

Paul Matsumoto is currently conducting biomedical research at Emory University's Department of Physiology. He has gained recognition for his



technical skills and intelligent approach to problem solving. "His background and abilities coupled with the new knowledge about molecular biology that his current position provides will produce a powerful combination that should make him a significant contributor to contemporary biomedical science" writes his academic

advisor. Paul is disciplined both academically and physically. A long distance runner who competed in marathons in his home state of Hawaii, he compares his medical research to running a marathon. "Both have positive and negative components . . . a negative factor of research, as in a marathon, is the frustration prior to achieving a goal." He cites prominent figures such as Miyamoto Musashi, Gordon Hirabayashi and Martin Luther King Jr. as sources of inspiration for overcoming the negative aspects of his work. "All overcame tremendous adversity in pursuit of their goal. These values and personal experiences sustain me in pursuit of a biomedical research career. I hope to contribute

knowledge in the biomedical sciences and to serve as a role model for others."

Julie Kaneshiro

UNION BANK GRADUATE SCHOLARSHIP
 West Los Angeles, CA
 School: University of Chicago

"As a Japanese American born and raised on the island of Oahu, I never felt unusually different, out of place or awkward in my social surroundings in Hawaii. But, upon my arrival in the Mainland, I immediately noticed that I was part of a minority group. . . . Many of my classmates were curious about my background ethnic and social. From that moment on, I realized that I, along with other Asian-Americans, had a responsibility to educate them; help them understand our culture a little better."

Julie Kaneshiro was actively involved in Asian student organizations throughout her undergraduate years at Loyola Marymount where she received her B.A. in Marketing in 1987. In her senior year she was selected to coordinate Loyola's Asian Pacific Heritage Week. Her strong marketing skills enabled her to make the event a phenomenal success. Julie plans to pursue a MBA in Marketing at the University of Chicago.

Cynthia Nakashima

THE REV. H. JOHN YAMASHITA GRADUATE SCHOLARSHIP
 Berkeley, CA
 School: UC Berkeley

Cynthia Nakashima, a UC Berkeley Ph.D. candidate, writes, "After many Asian American Studies and Ethnic studies courses I know that *gohan* and *shoyu*, chopsticks and *origami*, *daruma* dolls, fans and Hello Kitty are all parts of being Japanese American.



And so are the Meiji Restoration, immigration exclusion laws, picture brides, Alien Land laws, farming and relocation camps."

Cynthia has conducted research, published papers, and lectured on the Japanese

American and Asian American experience throughout her undergraduate and graduate studies at UC Berkeley and the University of Santa Clara. In addition, she has shown great interest in Amerasian issues and has been involved in the Amerasian Registry, Multiracial Asian International Network and currently serves on the Board of Directors for the Vietnamese Amerasian Family Association. In August, she traveled to Vietnam to provide assistance to Amerasian families.

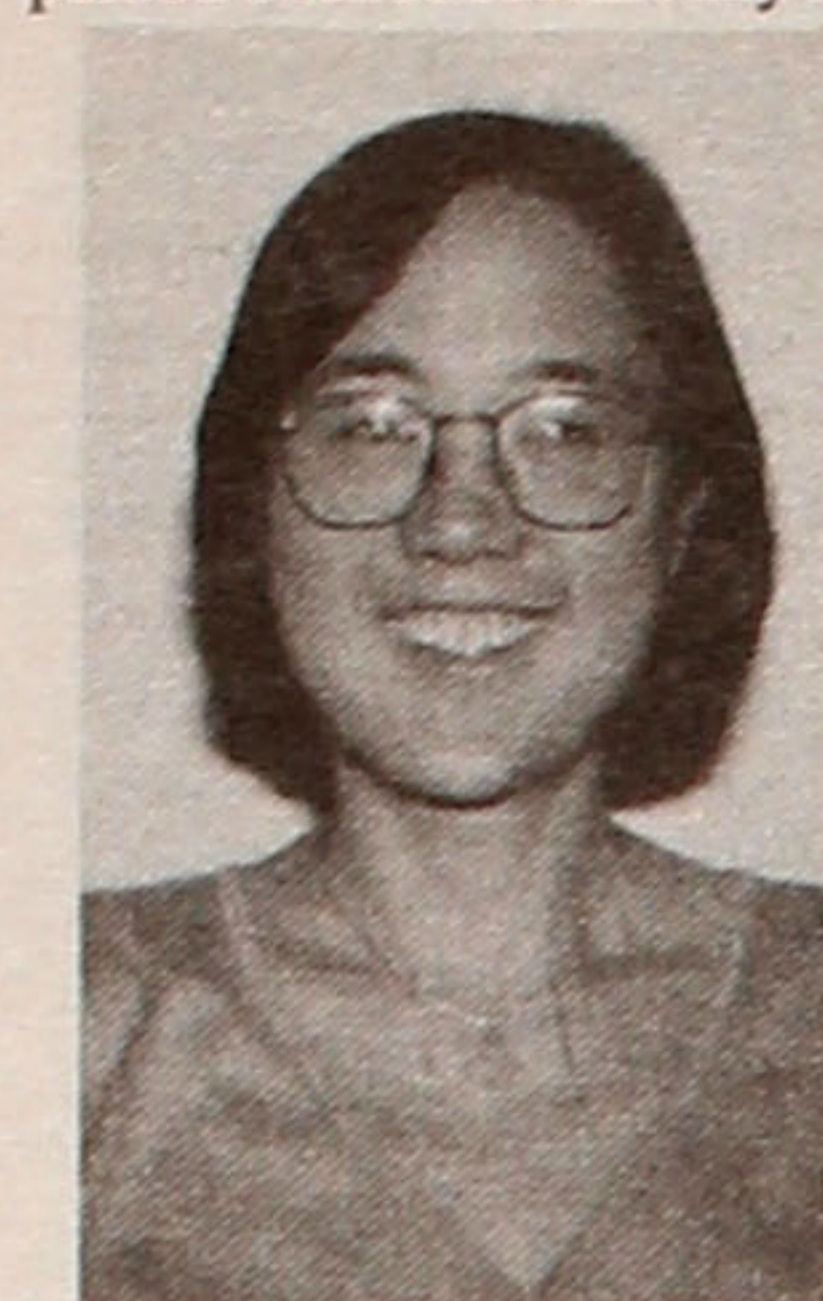
Cynthia is currently finishing her second year in the Ethnic Studies Ph.D. program at UC Berkeley under the advisorship of Professor Ronald T. Takaki. She plans to do research, write and remain involved in the Japanese American, Asian American and multiracial American communities. "My dream is to provide for at least a few students what my professors have provided for me."

Profiles of Scholarship Awardees
 by Cheryl Kagawa

Kesaya Noda

MAGOICHI AND SHIZUKO KATO GRADUATE SCHOLARSHIP
Cambridge, MA
School: Harvard University

Kesaya Noda is an accomplished writer, poet and teacher and has been described as "a disciplined person both academically and spiritually." She has studied in Japan twice:



first, academically as an undergraduate student at ICU in Tokyo and secondly spiritually where she completed a traditional 45-day Buddhist pilgrimage around the island of Shikoku.

This fall Kesaya will attend Harvard University where she will conduct her doctoral studies in religion. "I intend to focus on Shintoism, a rich and ancient tradition which is little known or understood in the West." She plans to travel to Japan to study the training and traditions of shrine priests. Her goal is to translate these traditions into English with the hope that this will lead to a greater understanding of Shintoism. Kesaya writes that "Shintoism has much to offer us as we seek to articulate new visions of a rightful relationship between ourselves and our environment. . . . I wish to use my understanding of Shintoism in the context of our Japanese American communities. I believe that it can be a resource and a gift for us."

Tish Okabe

NISABURO AIBARA GRADUATE SCHOLARSHIP
Gardena, California
Chapter: San Jose JACL
School: University of Southern California

Tish Okabe's career goal is to work as a professor of gerontology, teaching family sociology and social gerontology. "My interest in the family and the aging process are natural extensions of my socialization: the Asian cultures emphasizes the centrality of the family. I am interested in how traditional family forms will adjust to the assimilation of young Asian Americans."



Tish Okabe accumulated many honors as an undergraduate at USC, including graduating Summa Cum Laude and being elected to the Phi Kappa Phi and Phi Beta Kappa honor societies. She entered the USC graduate program in sociology with an All-University graduate fellowship and has received high praise for her work as a graduate teaching assistant.

She has already received recognition for her dissertation research project: "The Experience of Parent Care by Nisei in the Japanese American Families." Tish has done extensive background research into the attitudes toward and practices of elder care in Japanese and Japanese American family structures and the lives and experiences of the Issei and Nisei in the U.S. To complete her project, she plans to conduct interviews with Nisei women and men who are providing care to their aged Issei parents. "By studying the process of aging and all of the familial and societal dynamics involved, I hope to contribute to the improved quality of life for current and future generations of aged and their caregivers."

She has already received recognition for her dissertation research project: "The Experience of Parent Care by Nisei in the Japanese American Families." Tish has done extensive background research into the attitudes toward and practices of elder care in Japanese and Japanese American family structures and the lives and experiences of the Issei and Nisei in the U.S. To complete her project, she plans to conduct interviews with Nisei women and men who are providing care to their aged Issei parents. "By studying the process of aging and all of the familial and societal dynamics involved, I hope to contribute to the improved quality of life for current and future generations of aged and their caregivers."

Bruce Shimizu

HENRY AND CHIYO KUWAHARA GRADUATE SCHOLARSHIP
Santa Rosa, California
Board Member, Sonoma County Chapter
Massachusetts Institute of Technology

Bruce Shimizu writes, "I am a father, environmentalist, humanitarian, community activist, landscape architect and computer specialist. Necessarily in that order."

Bruce is a longtime JACL member. He was a member of the JAYS in his youth and currently serves as a Board Member of the Sonoma County Chapter. He is probably familiar to many JACL members. Over the past ten years he has served as a volunteer on the local, district and national levels within the organization.

Bruce is also a former National Youth Director and worked as a member of the National Staff 1979-1981.

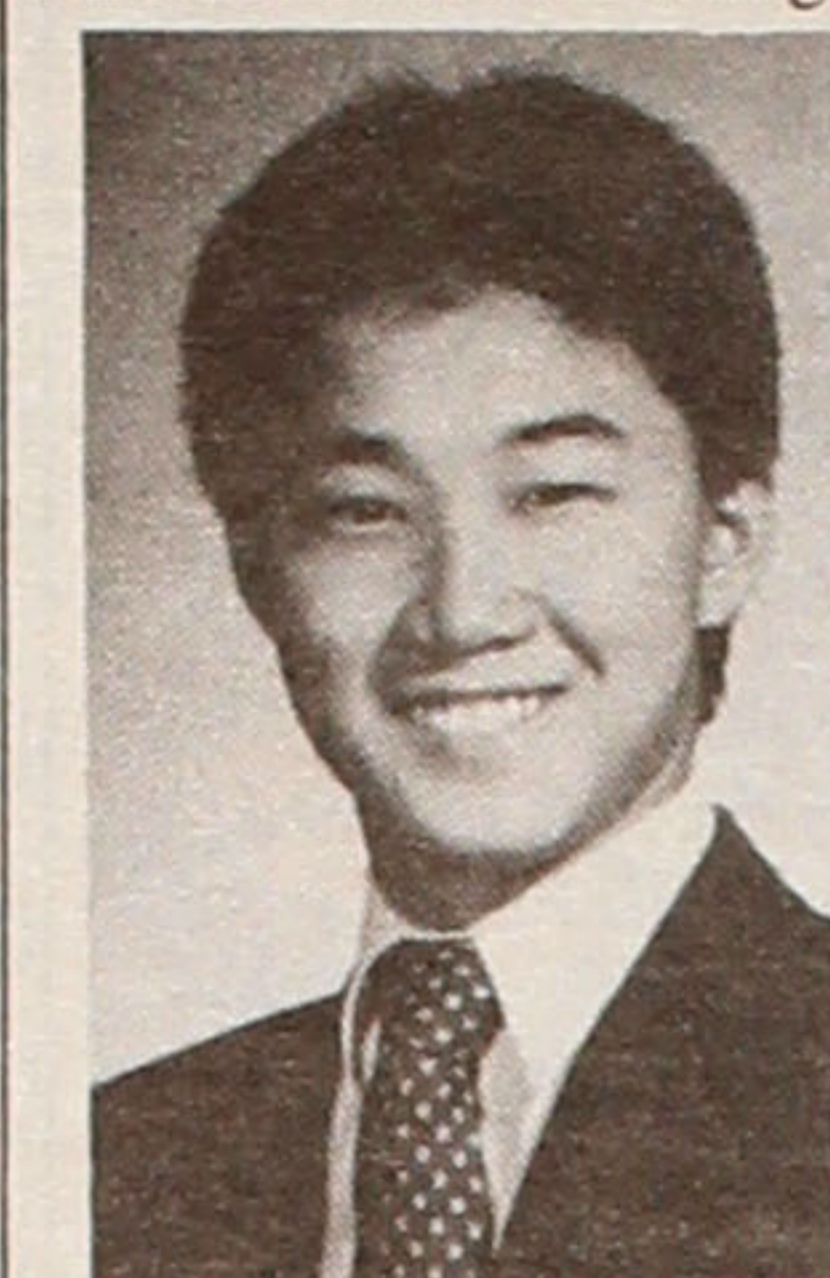
Sensitive to the needs of the community and the environment Bruce has received numerous awards in landscape architecture including the American Society of Landscape Architects Honor Award.

He plans to attend M.I.T. to pursue a M.A. in Real Estate Development. "The problems of our society are complex and integrally linked to one another. To try and solve one problem alone is not enough; many must be addressed simultaneously. I would like to combine my skills as an environmental designer and community activist with the financial expertise of a Real Estate Developer to address the issues of low cost/affordable housing and environmental degradation."

Hiroshi Tanaka

HENRY AND CHIYO KUWAHARA GRADUATE SCHOLARSHIP
Cambridge, Mass.
Chapter: Cincinnati JACL
School: Harvard Medical School

Hiroshi Tanaka writes, "Like many Asian Americans growing up in the United States, I inevitably encountered racism during my childhood and adolescence while at the same time adopting an 'Americanized' view of the world and myself."



Hiroshi feels that the internalization of the racism he experienced lead him to adopt the negative view society had of himself. "In spite of realizing that racism is irrational, I felt the burden was on me to prove somehow my American-ness, and therefore worthiness, to society, and fit in with the crowd. . . . Achieving this state of being 100% American and 0% Asian, I believed, would guarantee me from racial harassment. Instead, it lead to self-contempt, insecurity, and a widening of the 'cultural gap' between me and my parents."

During his undergraduate studies at Princeton University, Hiroshi excelled in his studies in Electrical Engineering, graduating with High Honors in 1986. He participated in many activities, earning a blue belt in karate, volunteering in juvenile correction centers and schools and performing as the co-principal cellist in the university orchestra. During his undergraduate years he became actively involved with Princeton's Asian American Students Association and attended ECASU conferences 1984-1987. Hiroshi felt that his participation in Asian student organizations enabled him to redefine and reassert his identity as an Asian American. "An essential part of this process was meeting other people who shared similar experiences growing up in America."

Currently Hiroshi attends Harvard Medical School where he is active in the Asian Health Organization. In 1989 he worked as a Research Assistant at Kanazawa Medical University in Japan. This experience gave him the opportunity to view his Japanese American identity from a Japanese perspective and he was amazed to find how his perception of himself and America had changed. "Having lived in Japan, I feel much closer to realizing the significance of being Japanese American."

FINANCIAL AID

Kerry Ann Lowell

ABE AND ESTHER HAGIWARA SCHOLARSHIP
Parents: Kinu Lowell
Rapid City, South Dakota
Chapter: Washington, D.C.

"As an Asian American, my eyes have been opened to see the need for cultural and international understanding," writes Kerry Ann Lowell. As a high school senior, Kerry participated in the Congress-Bundestag Youth Exchange Program and attended Hollenberg Gymnasium (High School) in Germany. A talented musician, she has played violin in the South Dakota All State Orchestra and the Waldrol Chamber Orchestra in Germany.



She credits her contributing to her interest in languages and culture. "Although my mother was forced to stop teaching her Japanese, she still taught my sister and me to appreciate the uniqueness of ourselves and of the people from different backgrounds." Kerry will attend Syracuse University this fall and major in International Politics.

Profiles of Scholarship Awardees by Cheryl Kagawa

LAW

Jane Kow

THOMAS T. HAYASHI MEMORIAL LAW SCHOLARSHIP
Jackson Heights, N.Y.
Chapter: New York JACL
School: New York University School of Law

"Growing up on the Lower East Side of New York City, in a predominantly Puerto Rican, low-income, inner city neighborhood, instilled in me a great deal of perseverance and determination to become more than my parents dreamed possible for themselves."



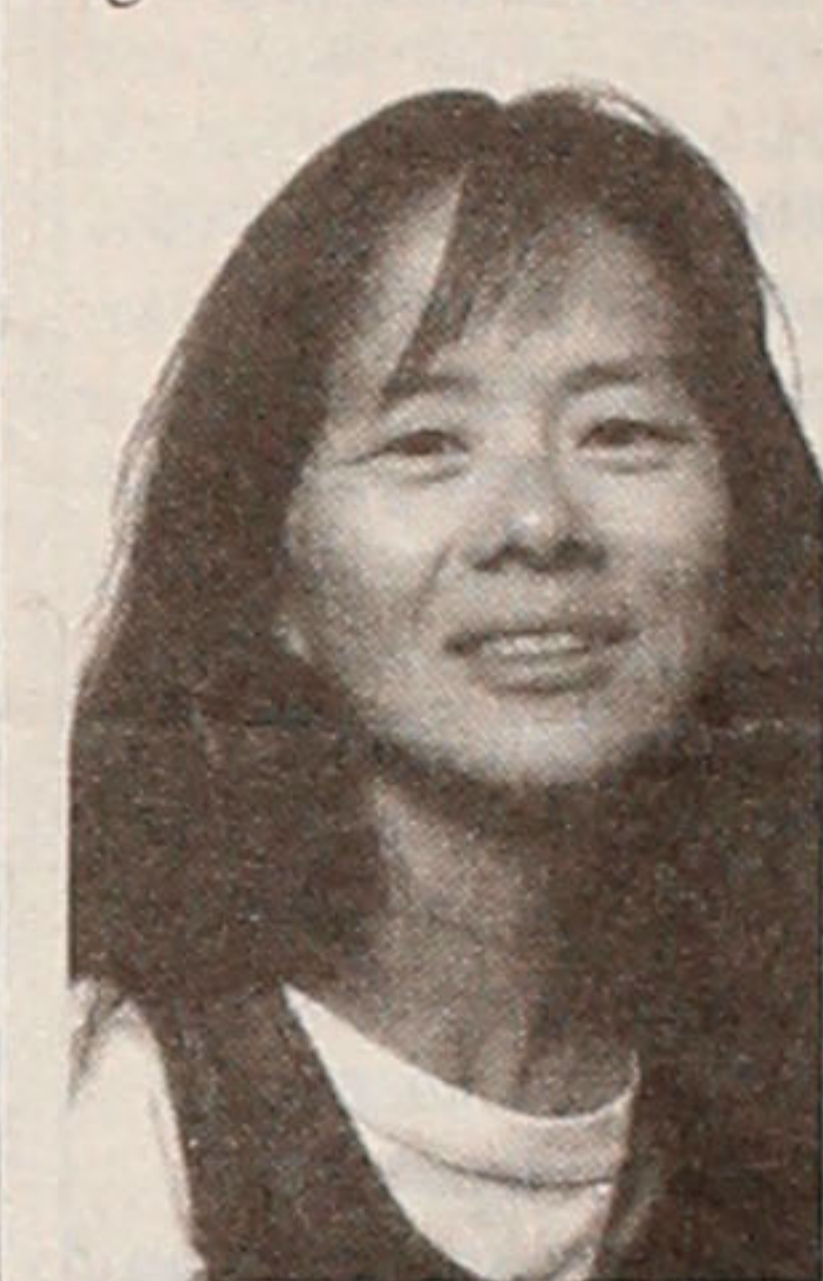
Sensitive to the issues of minorities, Jane Kow has worked as a Public Relations Coordinator for the Asian American Coalition, served as a contributing editor to "Bridges," the Minority Students Association publication, counseled abused and delinquent youths and worked as a Peer Counselor for incoming minority freshman students.

Jane will attend NYU School of Law this fall. "By continuing my education in law, I can develop the knowledge and skills necessary to become an effective advocate for those who continue to struggle against the constraints imposed upon them by poverty, lack of education and opportunity."

Linda Watanabe Mitchell

THOMAS T. HAYASHI LAW SCHOLARSHIP
Salt Lake City, Utah
Chapter: Salt Lake City JACL
School: University of Utah Law School

Linda Watanabe Mitchell graduated Magna Cum Laude in receiving both her bachelors and masters degrees from Utah State University and the University of Utah. She has been described as a goal-oriented person.



"She has the integrity, the commitment, and the motivation to reach the goals she sets," writes one of her University of Utah professors.

For the past three years she has been working as a legal assistant. She is currently employed at the law firm LeBoeuf, Lamb, Leiby & McRae. "I have enjoyed the challenging work and my exposure to the legal profession has been a strong motivating factor in my desire to attend law school." This fall she will attend the University of Utah Law school.

Deanne Ozaki

PROFESSOR SHO SATO MEMORIAL LAW SCHOLARSHIP
Anaheim, California
Chapter: Berkeley JACL
UC Berkeley, Boalt Hall School of Law

Deanne Ozaki believes that her generation can make a difference. "Thanks to the struggles of the pioneer Issei and Nisei, achievement of our endeavors is made easier. Our road has been paved. However, it is my hope that no matter how 'easy' things become for future generations of Japanese Americans, we never forget the struggles."



Deanne graduated Magna Cum Laude from UCLA with a degree in Political Science. Currently she attends Boalt School of Law where she has received an award for excellence in written advocacy. She is an active member in both the Asian American Law Students Association and the Pacific Islander Law Students Association. Presently she serves as the Recruitment Director for both organizations.

UNDERGRADUATE

Julie Bates

HENRY AND CHIYO KUWAHARA UNDERGRADUATE SCHOLARSHIP
Salem, Oregon
Chapter: San Francisco
School: University of Michigan - Waseda University

As a child, Julie Bates was encouraged to participate in Japanese cultural activities. She danced in

San Francisco's Bon Odori Festival and took lessons in Japanese language, *shuji* and *soroban*.



However, when her family left San Francisco to move to Oregon, she felt that she left much of her cultural identity behind. "For the first time in my life I realized that I was a minority. My classmates in the fifth grade were baffled by the sight of me eating *omusubi* for lunch.

In many instances I felt that I had to suppress my Japanese heritage in order to fit in with my classmates."

A gifted musician, she moved to New York in her senior year in high school to attend the Pre-College Division of the Juilliard School of Music. "My new surroundings put me back in contact with the Japanese culture and inspired my desire to become reacquainted with all things related to Japan."

As a high school graduation present her parents gave her a trip to Japan. "For the first time, the language which I had studied and the Japanese history books which I had read had a place in the world. The visit was the most impressionable educational experience which I have ever had."

A double major in Japanese and Violin Performance, Julie will attend Waseda University in Tokyo this fall through the study abroad program of the University of Michigan.

Angela Eng

KYUTARO AND YASUO ABIKO MEMORIAL UNDERGRADUATE SCHOLARSHIP
Agoura, California
School: Mt. Holyoke College

"I must admit that for most of my life I did not consider myself to be a Japanese American," writes Angela Eng. "So, when did I figure out that being



Japanese is something to be proud of? Was it when I finally got tired of hearing my friends say, 'Well—Chinese or Japanese—it's the same thing, right?' and asked my history teacher if I could do a special presentation on Japan and its unique culture? Or was it when I suddenly noticed that I had gone through high school as the only Asian in my

class? Whenever it was, I realized that I had lived so much of my life ignoring my Japanese heritage that I needed to make up for lost time.

Angela Eng has spent her undergraduate years at Mt. Holyoke College doing more than making up for lost time. She has served as an officer in student government and has been very involved with her campus' Asian Students Association, Asian Studies Department and the East Coast Asian Students Union.

Angela is currently completing her junior year in Japan at Doshisha University through the Associated Kyoto Program. This year in Japan has helped her to clarify her future goals with her major, International Relations. With her knowledge and understanding of her ties to both a Japanese and American heritage she hopes to contribute to the future development of relations between Japan and America.

Courtney Goto

SABURO KIDO MEMORIAL UNDERGRADUATE SCHOLARSHIP
Sacramento, California
Chapter: Florin JACL
School: Mills College

Courtney Goto became fascinated by politics after completing an internship at the Governor's Office of Community Relations. This internship exposed her to the world of bureaucracy, party loyalty and what she describes as "the inadequacies of California's government."



During her internship she completed an independent research project which revealed how state government has served ethnic minorities during the past six years.

Currently a Government major at Mills College, she aspires to become a role model for other Asian American women. "Although there are some successful women who have begun to fill these role models there are far too few Asian American women like myself, whose perspective has long been excluded from the shaping of society, can begin to apply their unique understanding of racism, sexism, and militarism in the hopes of changing

Courtney Goto (Cont.)

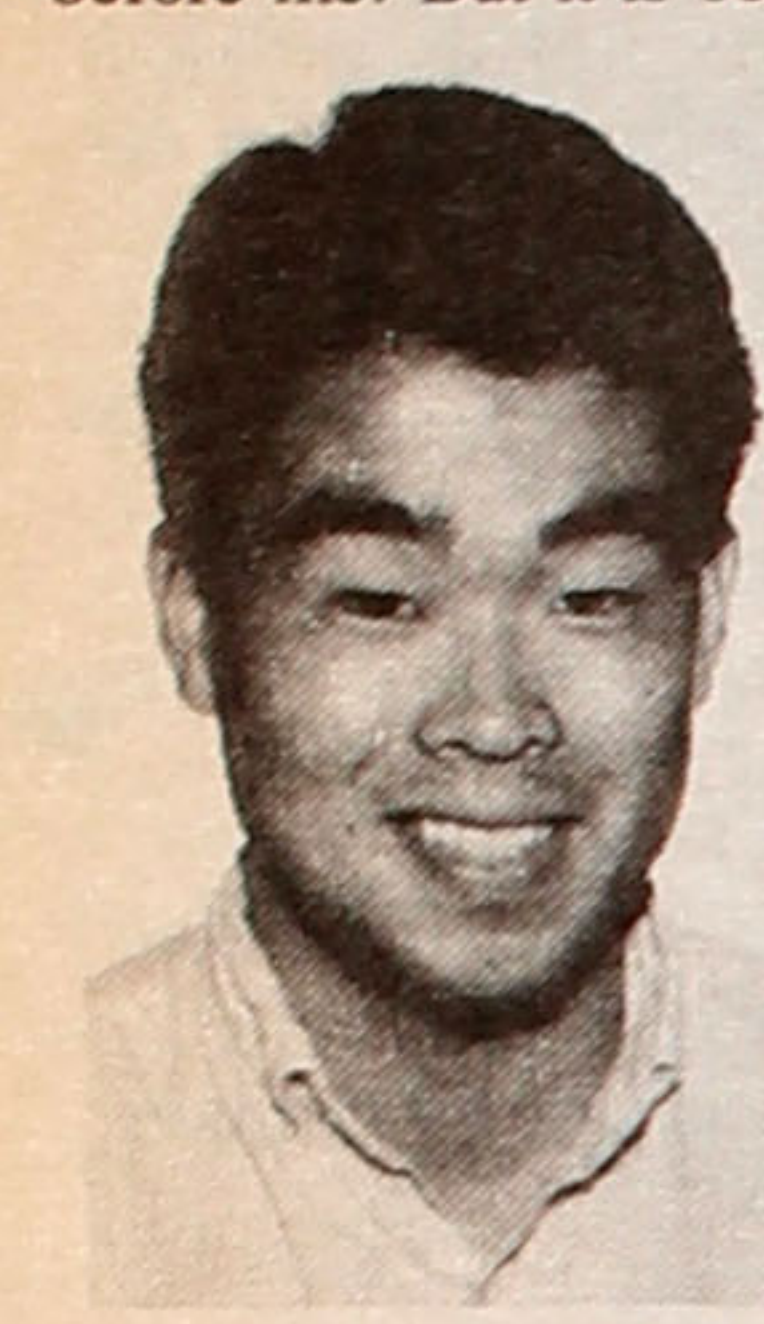
their fields." She names public administration, university teaching, the ministry and public policy research as possible future careers.

A leader in campus and church activities, she currently serves as the Asian American Representative to the National Commission on the Status & Role of Women in the United Methodist Church.

Geoffrey Murase

UNION BANK OF CALIFORNIA UNDERGRADUATE SCHOLARSHIP
San Francisco, California
Chapter: San Francisco JACL
University of California, Berkeley

"As a third-generation Japanese American, I have not experienced the hardships of two generations before me. But it is because of their struggles that



I have the luxury to make education my highest priority." An outstanding student who has received numerous scholastic honors, Geoffrey Murase is currently completing his degree in Engineering at the University of California, Berkeley, an opportunity which was denied to his father who was a UCB freshman when the internment order was issued during WWII.

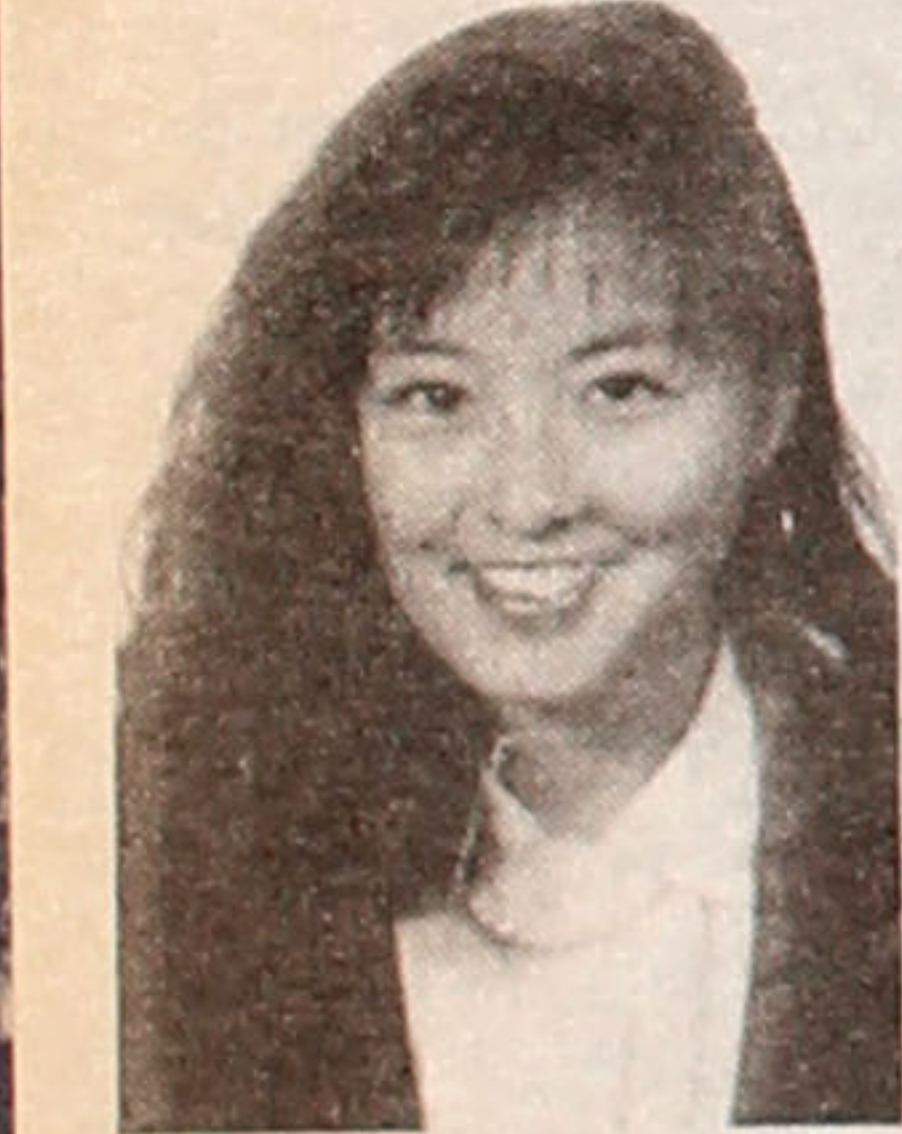
This commitment to take full advantage of given opportunities applies not only to his educational pursuits but also to his work in the community. As a youth in San Francisco he served as a counselor at the Japanese Community Youth Council and as a volunteer for the Cherry Blossom Festival and the Nihonmachi Street Fair. He continues to work with the community through his work with Alpha Phi Omega national service fraternity. Geoffrey describes his volunteer work as the benefits of living in a multi-cultural environment with a thriving Asian American community. "I developed a strong sense of community through teaching children arts and crafts as well as talking with the elderly. These experiences have fueled my drive toward completing my education by showing me how I can have a positive impact on other people's lives."

Geoffrey plans to pursue a master's degree in transportation engineering and city and regional planning.

June Tanaka

DR. THOMAS T. YATABE MEMORIAL UNDERGRADUATE SCHOLARSHIP
San Francisco, California
Chapter: San Francisco JACL
School: Tufts University

"My background and the Japanese culture influence my daily activities and decisions," writes June Tanaka. "I will always carry my Japanese upbringing and thinking with me."



June Tanaka credits her parents for instilling her with a sense of pride and understanding for her cultural heritage. "When I was younger, my family's differences from other regular Americans were all I saw and cared about.

Today I cannot say how much I appreciate my parent's determination and persistence to pass on their culture to me. I look upon my friends who cannot speak or understand the language because their parents never bothered to teach it to them, and I realize how lucky I am."

Her parents have also been supportive of her involvement in the Japanese American community. She has been a participant in every Cherry Blossom Festival since she was three years old, performing as a dancer with Genchi Minyo-kai and working in the food booths.

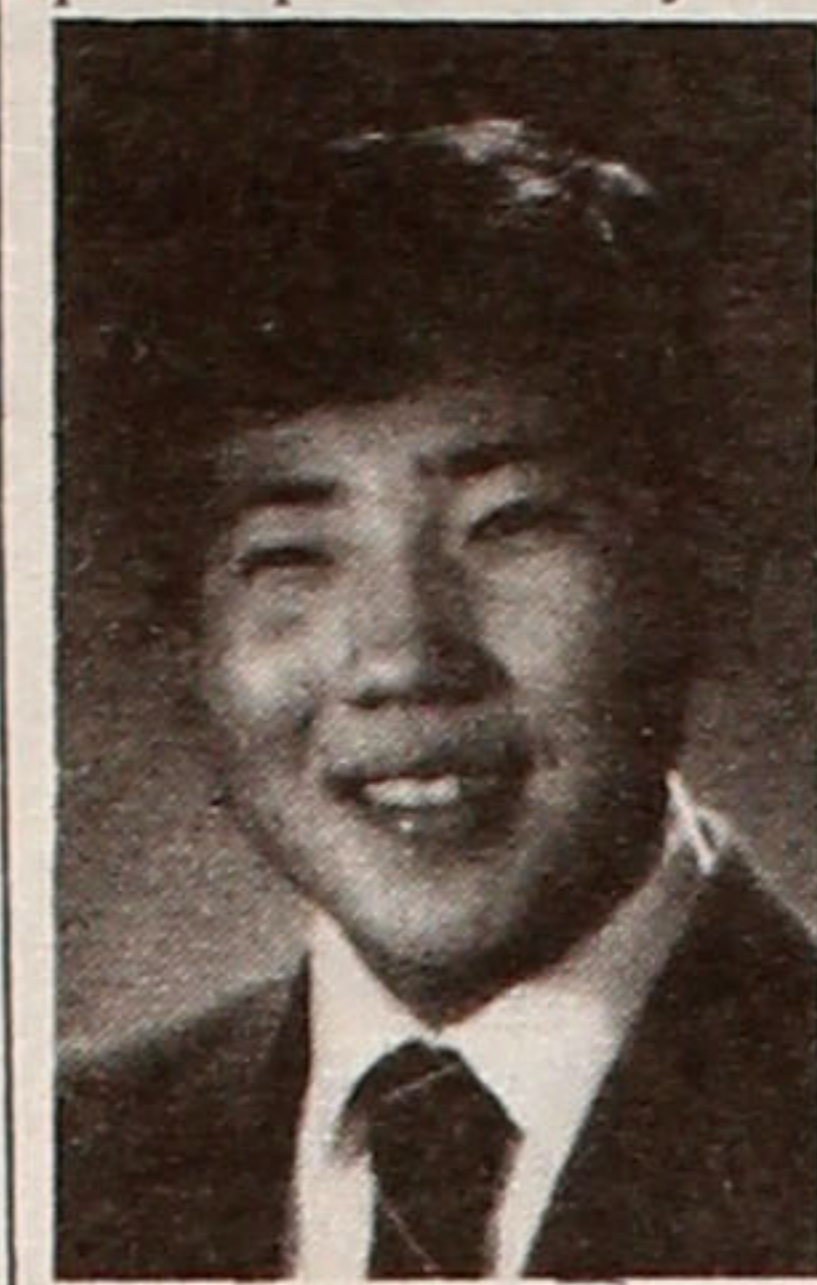
June's immediate plans are to finish her pre-med

requirements at Tufts University. "My dream is to become a pediatrician because I love working with children. From experience in volunteering, I realize that what brings me the most happiness and is the most rewarding is helping others."

Jason Mikami

SUMITOMO BANK OF CALIFORNIA UNDERGRADUATE SCHOLARSHIP
Lodi, California
Chapter: Lodi
School: UC Berkeley

"As a child of an Issei mother who never learned English, I was forced to grow up knowing how to speak Japanese. Many times, I found myself yelling



at my mom, 'Why don't you speak English! We don't live in Japan!' Now ironically, I thank my mom for the knowledge of a skill which now, and in the future, is a vital asset for my career goals of international business."

Jason Mikami is majoring in Japanese and minoring in Business Administration at the University of California, Berkeley. He has received honors in academics from his freshman year on. Jason is also known for possessing a strong feeling for community involvement. He is the past president of the Lodi YBA and currently is involved with the Lodi Buddhist Church Obon Festival and the Can Tree Food drive in his community.

FRESHMAN

Deborah Kawamura

KENJI KASAI MEMORIAL FRESHMAN SCHOLARSHIP
Parents: Joseph and Valerie Kawamura
Torrance, CA

Deborah Kawamura's adviser describes her as a highly motivated, creative and self-disciplined student who is well liked and respected by her



teachers and peers. A National Merit Finalist, she has received honors in English, foreign language, science and social studies. She was a member of her school's academic decathlon team, track team and served as an officer on student council. Deborah also worked on her school paper for the past three years as a reporter and

copy editor.

In addition to her many campus activities, Deborah has also been active in her local community. She has worked for four years as a Sunday School Teacher at Gardena Valley Baptist Church and two years as a hospital volunteer.

Deborah has also served as an officer on the Torrance City Youth Council addressing youth and community issues. "I believe in the vast potential of mankind to improve its condition. I would like to unveil this potential through the future foundation of teen community service networks across the nation." In her senior year, she worked to develop a new organization on campus to involve students with finding solutions to community problems.

A 4.0 student, Deborah graduated at the top of her class and is currently attending Yale University, majoring in molecular biophysics.

Lisa Arakaki

MAJIU UYESUGI MEMORIAL FRESHMAN SCHOLARSHIP
Parents: Franklin and Dorothea Arakaki
Montebello, California

"Japanese dancing has been a major part of my life since I was four," writes Lisa Arakaki. "During these years, I have learned much about my culture

and about myself." Lisa feels that dancing has given her self-confidence and has taught her the importance of hard work. "I have had the opportunity to do things with dancing that most people can only dream of. I was able to dance for the Pope (John Paul II) at Dodger Stadium and to make a video for Warner Brothers."



Lisa also credits her experiences with her school's band for giving her the skills necessary for working in a large group. As a leader, she is known for being highly organized. She has been a leader in numerous campus activities, serving as an officer in both student government and CSF and working as the

news editor on the school paper. Lisa plans to study the Humanities at Harvard University this fall and hopes to pursue a career in Law.

David Inoue

MR. AND MRS. TAKASHI MORIUCHI FRESHMAN SCHOLARSHIP
Cincinnati, Ohio
Parents: Tatsutoshi and Linda Inoue
Chapter: Cincinnati

David Inoue undertook a rigorous academic schedule, maintained a near-perfect grade point average, and volunteered much of his time to work



in his church and community as he financially supported himself through high school. "David goes about his business with little fanfare, with much good humor, and a goodly amount of grace," writes his counselor at St. Xavier High School.

In his essay he writes, "I consider my ability to handle working and to maintain a high grade point average to be one of my greatest accomplishments during high school."

David certainly has other accomplishments of which he can be equally proud. An outstanding math student, he was one of the top scorers on a high school team ranked first in the state of Ohio. He has received recognition from his school for his work in Model UN and attended the North American International Model UN at Georgetown University in his junior and senior years. He was a member of his school's Math Club, Science Club, varsity tennis team and was one of the founding members of his school's Asian Society Club, a support group for Asian American students.

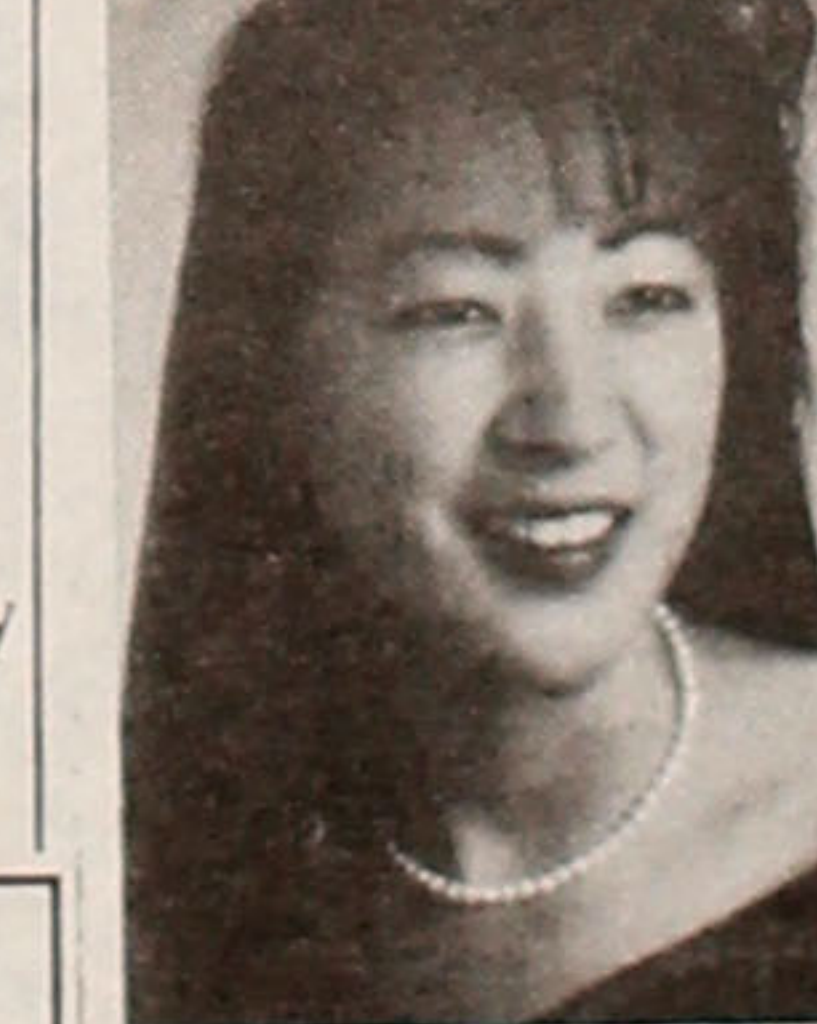
He has been actively involved in his community, serving on his church's board of deacons, tutoring elementary students and volunteering at a children's hospital.

David received a Traditions Fellowship to attend Cornell University this fall and will major in pre-med and Asian Studies.

Nancy Aochi

MASAO AND SUMAKO ITANO FRESHMAN SCHOLARSHIP
Parents: Keiji and Janice Aochi
Chapter: San Jose

Nancy Aochi has volunteered over 430 hours at Santa Teresa Community Hospital. For the past two years she has worked as an operating room volunteer and is currently training and monitoring other student volunteers.



Amazingly, she has also managed to balance her volunteer commitment with an intensive academic program and a variety of extracurricular and community activities.

Nancy has served in numerous leadership positions in student government and worked as the news editor of her school's paper. She has also been involved in Model UN, CSF, Key Club and the National Honor Society. In addition, she holds varsity letters in cross country, basketball and track and field.

She is also active in the San Jose Buddhist Church and has worked as a Dharma school first grade teacher for the past two years.

Nancy will attend UC Davis this fall and hopes to pursue a career in the medical profession.

Kim Gohata

SAM KUWAHARA MEMORIAL FRESHMAN SCHOLARSHIP
Parents: Yasunori and Nancy Gohata
Arleta, California

Since 1976 Kim Gohata has participated in the San Fernando Manzanar Pilgrimage. In the past six years she has been actively involved with this event,



guiding children and friends through the historical site and assisting her mother, Nancy Gohata, with fundraising. She writes that her ultimate goal in life is to find another cause to which she can passionately devote herself. She plans to attend UCLA this fall to major in history and English and hopes to pursue a career in the legal profession.

Kim has excelled academically and graduated at the top of her class. She served on junior and senior class councils, CSF, worked on the newspaper staff, founded her school's Ecological Club and won medals on the academic decathlon team. A scholar athlete, she has played varsity basketball for three years, winning first team all league and athlete of the week.

Kim also combines her athletic abilities with her leadership skills and currently serves as the Athletic Chair, Conference Chair and Fundraisers Chair for Jr. YBA.

Robyn Kimura

SUMITOMO BANK OF CALIFORNIA FRESHMAN SCHOLARSHIP
Parents: James and Dorothy Kimura
Chapter: San Diego

In eighth grade, Robyn Kimura won accolades in the San Diego County History Fair for her initial study of the internment of Japanese Americans. The



following year she won highest honors and her work graced the cover of the nationally distributed student guide.

Subsequently, each year she has returned to her junior high to educate others on the internment. "Her talks include a remarkable array of primary source materials and other visual aids, and she deftly leads the students to the conclusion that it is up to all of us to ensure that events such as these cannot happen again," writes a former mentor teacher.

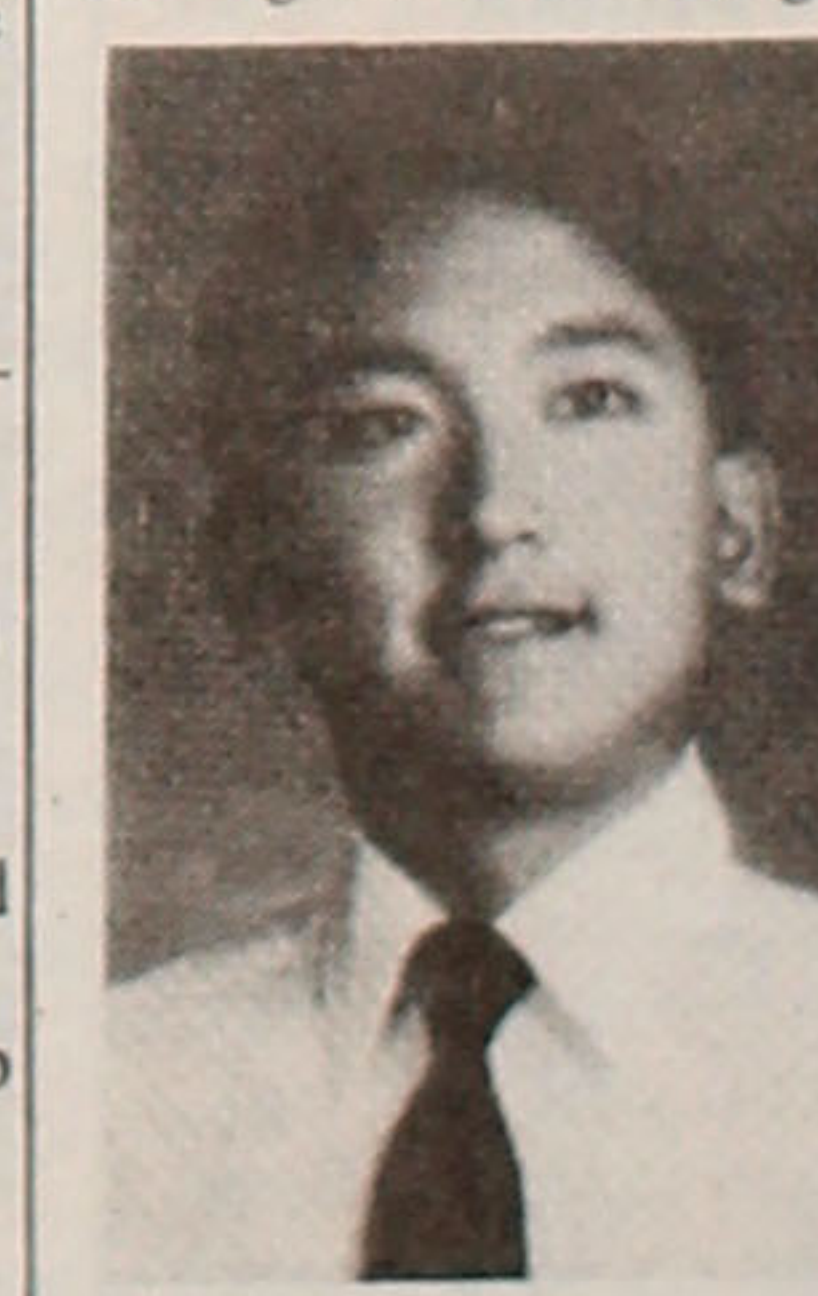
Robyn Kimura is a conscientious leader and has served as her school's ASB president, Interact Vice President, Jr. YBA president and captain of her school's varsity softball team while maintaining an academic schedule filled with advanced placement classes.

She plans on attending UCLA this fall and plans to major in business with an emphasis on marketing.

Henry Miyoshi

HENRY AND CHIYO KUWAHARA MEMORIAL FRESHMAN SCHOLARSHIP
Parents: Takaki/Yoshi Yanagieda Miyoshi
Fowler, California
Chapter: Fowler

As junior in high school, Henry Miyoshi was selected to work as a Biomedical Research Intern. Having observed emergency room procedures



through his volunteer work in his local hospital, Henry designed an Intensive Care Unit Calculator capable of producing emergency computations. With the help of his mentor, he plans to market this computer nationally.

Henry is a straight A student, class valedictorian, ASB president and Eagle Scout. He has received recognitions and awards for his work in math and science at both the state and national levels and a special award from the American Chemical Society.

Henry is also an athlete and was captain and Most Valuable Player on his school's varsity tennis team. In the community he has served as the president and vice-president of the Fowler and Central California Jr. YBA and works as a church chairman and assistant teacher at the Fowler Buddhist Church.

Henry will attend Stanford University this fall and hopes to pursue a career in medicine.

Applications for the 1991 JACL

Scholarship and Awards program will be available from the 115 local JACL chapters, regional offices and from National Headquarters here in October.

The 1991 program is offering 41 scholarships totaling over \$70,000 to students at three levels at colleges and universities across the nation: (1) Freshman, (2) Undergraduate, and (3) Graduate. In addition, JACL awards scholarships in law and in the performing and creative arts.

Application Process: (a) Applicants should specify when requesting scholarship applications. (b) JACL members, their children or any American of Japanese ancestry may apply for a JACL national scholarship. Preference may be given to JACL members. (c) Freshman applicants must submit their applications to their local JACL Chapter by March 1, 1991. [Roster of Chapter Membership Chair is printed elsewhere in this issue to make a local contact.] All other applicants must submit their scholarship applications to JACL National Headquarters by April 1, 1991. (d) Students are urged to contact their local JACL chapters for additional scholarship or student membership information. Applications and brochures may also be obtained by sending a legal-sized self-addressed stamped envelope to National JACL Headquarters, Attn: Scholarship Committee, 1765 Sutter St., San Francisco, CA 94115.

Profiles of Scholarship Awardees by Cheryl Kagawa

Jan Morimoto

SAM KUWAHARA MEMORIAL FRESHMAN SCHOLARSHIP
 Parents: Allen and Faye Morimoto
 Gardena, California

Jan Morimoto is concerned about a variety of issues including nuclear weapons, apartheid and the rain forests. "I find it extremely difficult not to be concerned with the world around me as well as my own community. I feel that, as an individual, I have undeniable duty to care and learn about things happening on the entire planet."



Jan has been described as a vivacious and enthusiastic student who is capable of strong critical thinking. Highly interested in literature,

she feels that reading has enabled her to observe and empathize with different avenues of life. She has worked as reporter and editor of her school's newspaper and has contributed articles to her local newspaper. "As a journalist, I have been given a very important tool and responsibility. I realize this and hope to continue writing in the future." A National Merit Scholar, she will attend UCLA this fall to major in English.

Nancy Nakada

UNION BANK OF CALIFORNIA FRESHMAN SCHOLARSHIP
 Parent: Mrs. Mitsue Nakada
 San Dimas, California
 Chapter: San Gabriel Valley

Nancy Nakada combines realism and idealism to form her outlook on life. She writes, "Everyday, people must confront issues such as pollution and



oppression, both political and personal. But with some of the changes that have recently taken place, like the Berlin Wall falling, Nelson Mandela's release from prison, and the attention being placed on environmental causes, my idealistic side has great hope for a future of peace, freedom and environmentally conscious living."

Her adviser writes, "She is invaluable on club councils, not only because of her good ideas, but because she can be counted on to share in the work load as well as have the ideas." A 4.0 student, she has been active in her school's academic decathlon team, American Heritage Club, Junior Deafblomen of America, Literary Honor Society, Physics Club and Ecology Club. In addition, she has also worked as a tutor for other high school students.

She is also a member of the Okinawa Kenjin Kai and a member of the Kin Cho Club.

Nancy will attend UCLA this fall and major in economics and business. She plans on pursuing a career in corporate law.

Miwa Nakagawa

MR. AND MRS. TAKASHI MORIUCHI FRESHMAN SCHOLARSHIP
 Parents: George and Hiroko Nakagawa
 Gardena, California
 Chapter: Gardena Valley JACL

Byron Shinyama describes Miwa Nakagawa as "a definite leader and positive role model not only to her peers but to the entire community." For the



past two and a half years Miwa has been an active member of the High School Task Force, a volunteer group which serves to promote awareness of drug abuse to elementary school students. She is also an active member of the Asian Youth Group, a group whose main focus is to promote understanding and tolerance between different ethnic

groups by creating a network among Asian/Pacific youth in the Gardena area.

Attending an ethnically diverse high school, Miwa is well aware of the tensions that exist between ethnic groups. "Recent disputes between Korean Americans and Japanese Americans at Gardena High School, I believe, is a result of a lack of understanding; not personal hatred." Miwa has been an active participant in meetings designed to create dialogue between various ethnic groups and

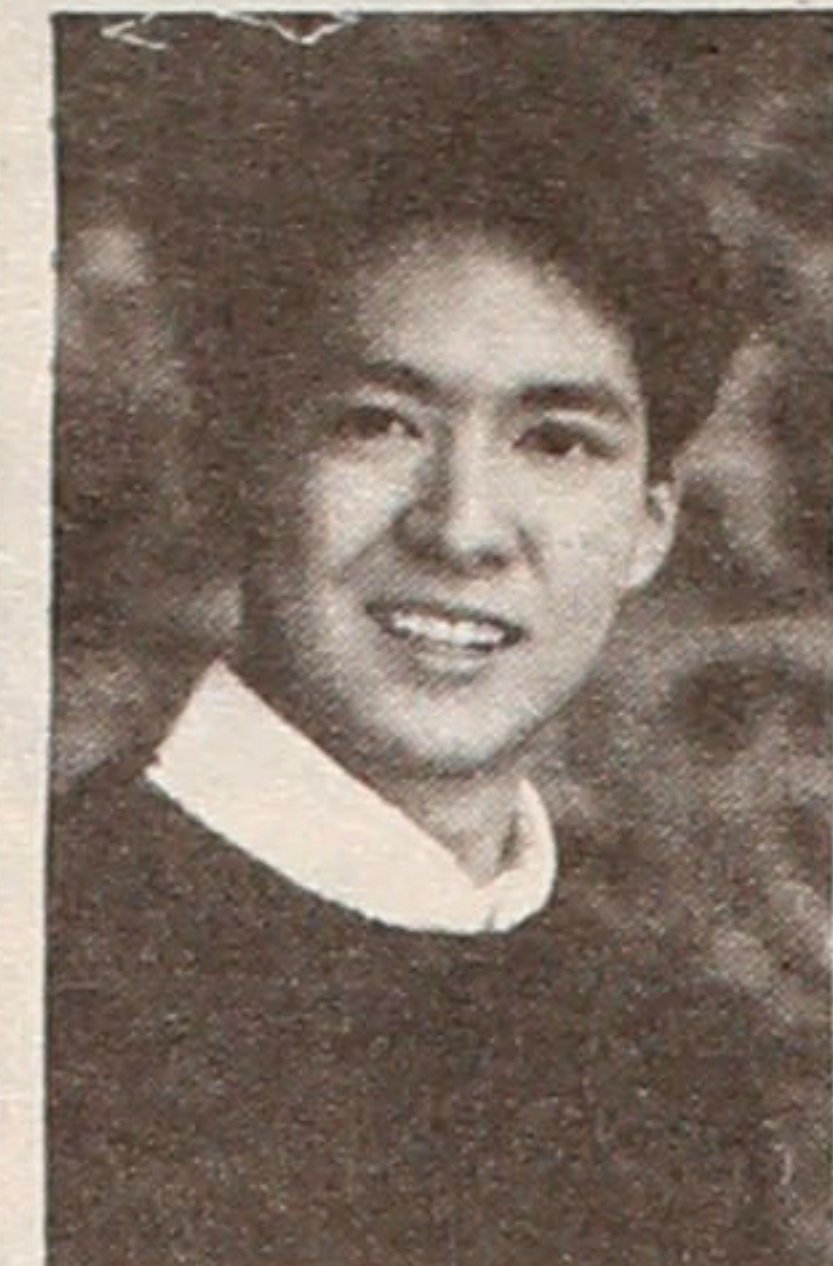
has been instrumental in creating cultural exchanges. "By sharing cultural superstitions, traditions and beliefs, and personal goals and anticipations, the members have bonded together, seeing similarities between one another while accepting the differences in culture."

A top ranked student, she possesses a near-perfect SAT in Mathematics. Miwa has spent this summer in Japan through the Youth for Understanding scholarship program and plans to attend UC Berkeley this fall to major in the Humanities.

Keith Nitta

SOUTHPARK JAPANESE COMMUNITY FRESHMAN SCHOLARSHIP
 Parents: Steven and Mitsuko Nitta
 Arvada, Colorado
 Chapter: Mile-Hi

Although he had enough material to have written solely about his outstanding academic achievements, Keith Nitta chose to share his personal experiences as a Japanese American student, most notably about his struggle to overcome the model minority stereotype.



He writes of noticing what he describes as "the real difference" when he was seven.

"Suddenly, the teacher expected me to know all the right answers, and was obviously disappointed when I did not. I longed to be like my classmates, not to get the disappointed look when I was not right." This expectation led him to strive for unrealistic perfection. "Since I was expected to succeed, I saw missing just one problem as a failure."

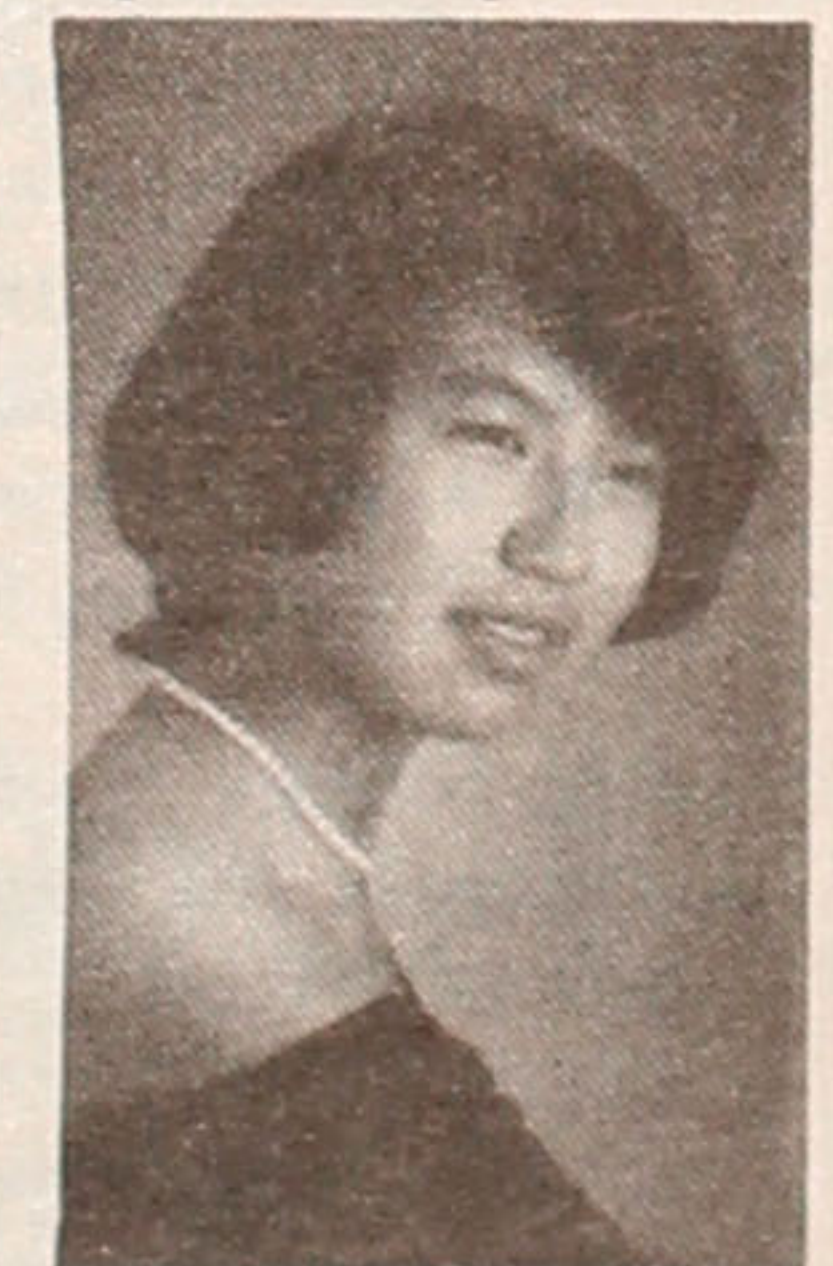
As he grew older, he realized that he held an incorrect view of failure. "With help from my family, especially my parents who, I realized, had also matured, I learned that failures are not ends in themselves, but merely a means to an end, a way to help me grow as a person."

He has been described as both as serious, this is reflected in his 4.0 GPA and easy going and flexible. As editor-in-chief of the yearbook, he was known for maintaining a sense of humor even while working under the stress of a deadline. Keith has received school honors in History, Biology, Math and Social Studies and has served in leadership positions with student council, Model UN, Boy's State and the Tri-State Young Buddhist League. He will attend Colorado College this fall as a History major.

Cherry Ogata

HENRY AND CHIYO KUWAHARA MEMORIAL FRESHMAN SCHOLARSHIP
 Parents: Miorihei and Michiyo Ogata
 Campbell, CA
 Chapter: San Jose

Cherry Ogata wants to build a computer, not an ordinary computer but a "thinking," perhaps "User-Impolite" computer. "I want to build a thinking



computer that will talk back to me with all the biting sarcasm (perhaps not) only a human can impart. So come next September, I'm off to M.I.T. to fight my way to a doctorate degree in Brain and Cognitive Science."

For the past six years Cherry has won first place in Physics at the Santa Clara Valley (a.k.a. "Silicon Valley") Science and Engineering Fair and in 1989 she received the Grand Prize for her work in vortices and fluid mechanics. She has competed nationally in science competitions and was one of three finalists to have had work published in the science abstract "SuperQuest." She has received awards and honors from Westinghouse, Hewlett-Packard, The Society of Women Engineers and The American Aeronautics and Astronautics Assn. In 1989, she won the Syntex Award which enabled her to travel to the International Science and Engineering Fair where she received the 3rd Grand Award in Physics and national publication of her work in the ISEF scientific abstract. Not surprisingly, Cherry received early admission to the Massachusetts Institute of Technology.

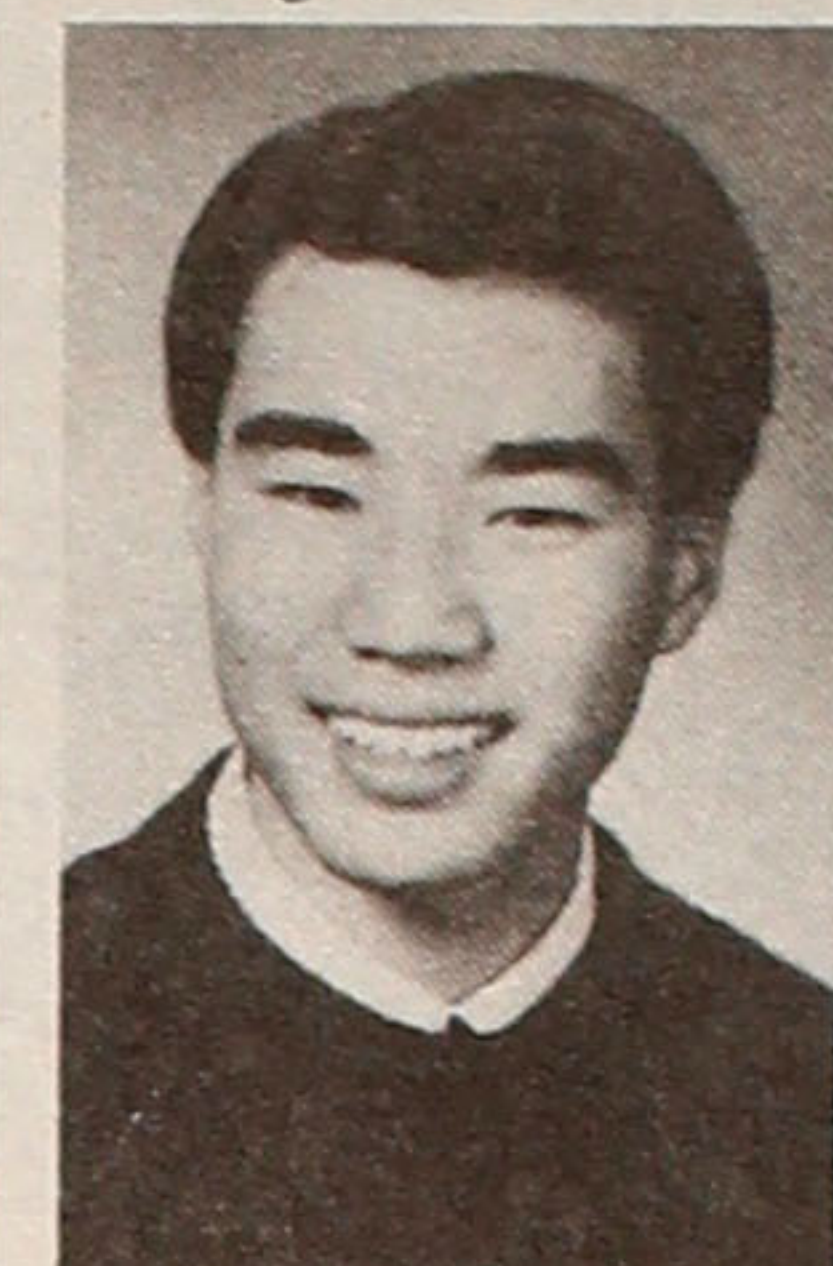
Cherry maintained a perfect academic record during her years at Westmont High School. She excels in other areas besides the sciences and has received recognition and honors for her work in art, music, speech and debate and creative writing. During her junior and senior years she was editor-in-chief of her school paper. She is also one of the top foreign language students in the nation, placing fifth in the 1989 National Competition of French.

Cherry has been described as possessing a "wonderful sense of humor" and "an infectious love of life." In her impressive and lengthy application, she closes her personal essay by sharing some of her thoughts and personal goals. She states that in addition to accomplishing Möbius technology and building the world's first "User Impolite" terminal, she would like to become the proud owner of "an intensely blue convertible VW bug."

Jeffrey Ota

MASAO AND SUMAKO ITANO FRESHMAN SCHOLARSHIP
 Parents: Terry and Shirley Ota
 San Jose, California
 Chapter: San Jose

In his personal essay, Jeffrey Ota fondly reminisces about his Issei grandmother in Sacramento. "Although there was a language barrier, she was



still my favorite person in the world. . . . As I grow older, I constantly remember the courage of my grandmother and realize a growing sense of responsibility that I have as both an American citizen and a person of Japanese ancestry."

Jeffrey credits his positive family experiences as his major source of inspiration for creating a ten minute video with his friend Kevin Kishimura about the internment camps during World War II. This project won both state and national honors in the National Minority Day competition and Congressman Norman Mineta asked Jeffrey to show his video at a Redress fundraiser in Sacramento. Subsequently, Jeffrey became involved with the Nihonmachi Outreach Committee and wrote numerous letters to encourage the passage of redress legislation.

"His character is one built on many values instilled in him by his parents," writes his counselor. "Jeff has a high respect for people and a strong sense of decency." Jeffrey Ota is an effective student leader who uses his potential to the maximum. He has served as an officer in student government, worked as editor-in-chief of the school newspaper and for the past two years he has co-captained the varsity basketball team.

In the community, Jeff is active with the San Jose Zebra Basketball Organization and for the past four years he has worked as a coach for a 6th grade basketball team for the JCYC. He is also very active with the Young Buddhists Association and has been a member of the Jr. YBA cabinet for four years.

Academically, Jeffrey excels in various areas. He has taken every honors course at his high school and has completed several calculus courses at the university level. He will attend Stanford University this year and plans to major in Engineering and minor in Communications.

Miwa Takano

GIICHI AOKI MEMORIAL FRESHMAN SCHOLARSHIP
 Parents: Masaharu and Hiroko Takano
 St. Louis, Missouri
 Chapter: St. Louis JACL

Many JACL members are already familiar with Miwa Takano. MDC District members may be familiar with her work as the St. Louis JAYS



president. Others may be more familiar with her work at the JACL National Convention where she represented MDC as both the District Youth Representative and High School Speech Finalist.

Perhaps what many of us are not familiar with is her activities outside of JACL. Miwa Takano is a talented musician, varsity cross country runner and an exceptional student who possesses an unheard of 4.4 GPA.

Miwa has played in the first violin section of the St. Louis Youth Orchestra and has served as the Concertmistress for her school's orchestra. In addition to running cross country, Miwa has participated for several years in her school's soccer program.

A National Merit Finalist, Miwa has received honors in math and biology and as well as recognition from her teachers for her essays in her advanced placement English classes. She served as president of Mu Alpha Theta, the national Math honor society and has competed in competitions at the state and national levels.

Her teachers describe her as an extremely hard worker and an alert individual. "She seems to be conscious of everything that goes on around her. . . . she is not satisfied with half-answers or unclear explanations." Miwa plans to study biochemistry at UC Berkeley this fall with the hopes of pursuing a career in medical research and genetics.

Todd Sasaki

GONGORO NAKAMURA MEMORIAL FRESHMAN SCHOLARSHIP
 Parents: Akira and Carole Sasaki
 Los Angeles, California

In his junior year Todd Sasaki was hospitalized for a collapsed lung. At first, his main concern was regaining his starting position on the basketball



team. However, reflecting upon the experience, he now feels that it helped to sensitize him towards community work. "I was able to see and experience first hand how much community work means to those who really need and look forward to it. Instead of a task to be carried out, it is now a service I, it will willingly."

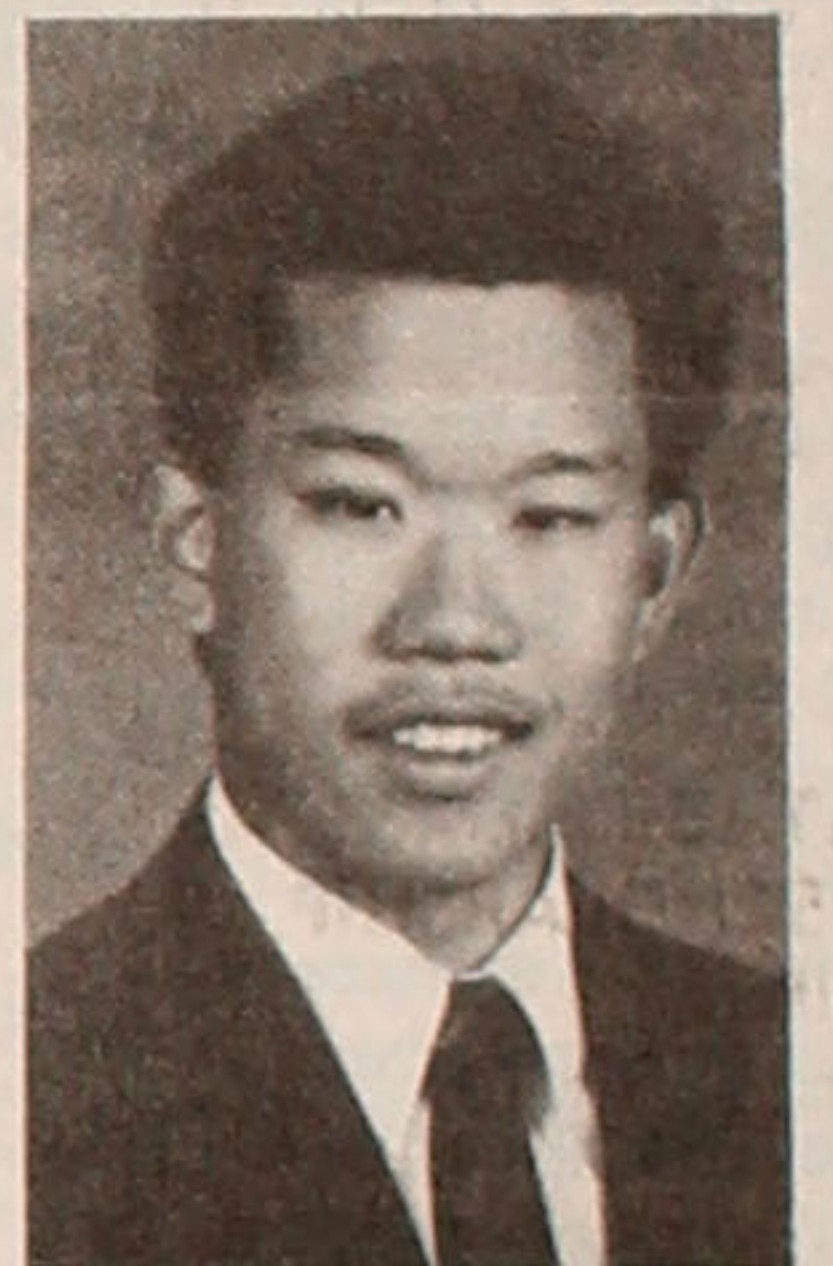
Todd has worked with underprivileged children, served lunch for the homeless, packed food boxes and worked on a picnic for families of Everywomen's Shelter. He is the president of Youth Fellowship for the Centenary United Methodist Church and has been active with the Japanese Cultural Community Center and Little Tokyo Service Center.

His teacher writes that even through he missed weeks of classes he kept up with the work and "continued to blow the competition out of the water when he returned to school." A National Merit Finalist, he will attend Swarthmore College this fall to major in Political Science and History.

Brian Yamasaki

COL. WALTER T. TSUKAMOTO MEMORIAL FRESHMAN SCHOLARSHIP
 Parents: Yukio and Yoshiko Yamasaki
 Gardena, California

"I take pride in being a Japanese American. Because I am a member of two cultures, I see the world in multiple perspective. From the Japanese



culture, I have learned about patience, diligence and the importance of having a tightly knit family. From the American culture, I have learned how to assert my opinions, beliefs, and values."

Brian Yamasaki prides himself in being open minded. He credits his experiences in Boy Scouts, church and his community's Asian

Youth Group for challenging him to try new ideas. A 4.0 student, CSF president, editor of the school paper, leading member of the Gardena Citizen Bee Team and Eagle Scout, Brian Yamasaki is known for setting the standards that other students strive to meet.

Brian plans to major in political science and pursue a career in government work. He plans on attending Harvard University.

Derek Yokota

MITSUYUKI YONEMURA MEMORIAL FRESHMAN SCHOLARSHIP
 Parents: James and Gladys Yokota
 Torrance, California
 Chapter: Gardena Valley Chapter (parents)
 Student member of the South Bay chapter

"As a Youth Volunteer at the Little Company of Mary Hospital, one of my most interesting responsibilities was discharging mothers of newborn



babies. I realize that not all patients recover and are able to go home, but each time I see someone who has been helped, such as these mothers, I feel better about myself."

Brian Yokota hopes to utilize his strong science background to pursue a career in medicine. A 4.0 student, Brian scored a perfect 800 on his SAT.

On campus, he has been active in his school's academic decathlon team, Japanese Club, CSF and Ski Club.

Brian is an Eagle Scout and has been very active with his school's community service club. Over the past five years he has worked on numerous projects in the community, repairing and repainting playgrounds and schools. In addition, he has also helped to maintain Hopkins Wilderness Park in Redondo Beach.

EAST WIND

Continued from Page 4

scheme and strategy for Japan might be. Early on, the name "Doki, Tsuyoshi" cropped up with regular frequency and a dossier on the name was assembled. One of these days, he was due to come through on a hikiage boat. But when? Where?

THE INTEROGEES were hardly talkative, so hard data was hard to come by. Efforts were made to be courteous, including toward the military hikiages. (Often, the ranking officer, not infrequently a couple of generals, would remain in the background while some field grade officer or even a lieutenant, would step forward to speak for the military contingent; the spokesman would be directed to step aside and the request made to have the highest-ranking officer to forthrightly step forward.) Our prime tactic and weapon was having just enough information to be able to detect an interrogee who was providing misleading information. But that was slow-going, and that's where Sergeant Fujio "Wymo" Takaki, an MIS veteran from Hawaii, was able, so to speak, "to break the code."

TO FULLY UNDERSTAND how it all came about, one has to know Wymo, the kind of person he is, his acute sense of humor and timing, his alertness to a situation which may hold little or no meaning to you or me. Anyway, Wymo quickly established a relationship with this particular military hikiage from Manchuria to the extent that he put the hiki-age in his jeep, drove him to our military quarters, let him take a hot shower, provided him with a clean set of (Wymo's own) khakis, and fed him—white rice. (White rice was still not easy to obtain for the ordinary Japanese, and certainly that hiki-sha had not had any for quite some time.) With all this totally unexpected kindness from a member of the *johobu* (military intelligence), coupled with Wymo's winning ways—the fellow broke down and completely cleansed himself of all information, including a key document which had been sewn in his clothing (in the fly of his trousers). From then on, the American intelligence team held the proverbial "ace-in-the-hole" which we never revealed but continually employed—much to the consternation of the Communist agents that were seeking to slip through with a straight face. (Oh, yes; Mr. Doki was discovered coming through; I remember the gentleman as well. I think I recall reading that he was elected to the Japanese Diet.

AS FOR WYMO, he continued to be an invaluable member of the team. On one occasion, he volunteered to become an incognito member of a Japanese fishing boat to go on an intelligence mission. My recollection is that it was an information-gathering trip to Tsushima, an island between Korea and Japan. Risky business casting his well-being to an unknown crew aboard a wooden boat that had seen better days. Since leaving Japan in 1947, I'd often wondered what ever happened to that sergeant.

The other day, a Nisei vet telephoned me from California with information of Wymo's whereabouts. A flood of memories returned. By the time you're reading these words, I will have written him to re-establish old connections.

Handicapped People

With exception of school buses for the handicapped in Japan, there are no public buses in Tokyo equipped with a wheelchair lift.—*Asahi Shimbun*

An Obon Tribute Honors the Tokita Family Matriarch



Photo by Scott Hashimoto

IN MARCHING YUKATAS, EIGHT OF THE 22 Tokita Family members and close friends pictured are (from left): Sheri Hashimoto, Lori Hoffman, Denise Tsuji, Janette Tsuji, Allison Namba, Kara Tokita, Julie Namba and Bruce Hashimoto. All performed in memory of Ann H. Tokita (1907-1990) at the recent Seattle Buddhist Church obon festival. Mrs. Tokita, a Seattle Issei pioneer, operated the New Lucky Hotel in prewar Nihonmachi (623 1/2 Weller St.) and managed to send her eight children through college.

AYA SANSEI

Continued from Page 5

women be allowed to be women on the kabuki stage?

Yes, I know. Kabuki has traditions that reach back to a time when women were not permitted on the stage, traditions that say men must be both villain and villainess, hero and heroine.

I am fascinated by kabuki as a dramatic art form, colorful, vibrant, vigorous with the actors projecting unlikely old

story plots both by overstatement and understatement. I respect the traditions that have remained virtually unchanged over the centuries.

But traditions are falling all around us. As I left the theater, the thunder of applause still echoing in my ears. I couldn't help but wonder if the time hadn't come to permit women to play themselves on the kabuki stage.

Some day I would like to sit down with Mr. Kotaro and ask him about

that. Not demand, as some of my more militant sisters might want to do, but ask. Gently. In the feminine way. Like Mr. Kotaro playing the part of the spurned and heartbroken fiancée. I think he might understand.

COMPROMISE

Continued from Front Page

NVCC and its council member organizations," the Memorial Monument Foundation stated.

Text of the *Los Angeles Times* editorial (June 29, 1990) follows:

Local Watch

Veterans At War

It's sad. Once soldiers side by side. Now veterans warring among themselves.

Who should be listed on a proposed L.A. monument to American soldiers of Japanese ancestry? The question threatens a community project designed to honor those who served in three segregated World War II units.

One group wants the privately funded monument in Little Tokyo to list the names of all 12,000 members—living and dead—of the Army's all-Japanese-American 100th Battalion and 442nd Infantry Regimental Combat Team, which served in Europe, and the Military Intelligence Service in the Pacific. An opposing group wants to honor only the 700 killed during World War II, but to include the names of 325 Japanese Americans who died during the Spanish-American War, World War I and the Korean and Vietnam conflicts.

The debate is muddling the intent of the monument. To make a special acknowledgement of the blood, sweat and tears of those Japanese-American soldiers who fought hard to prove their loyalty to the United States so their families, unjustly interned in U.S. concentration camps during the war, would be more readily accepted by other Americans.

They were tested as few others were. They deserve an enduring testimonial—one designed with the names of all the Japanese-Americans who served in World War II as the centerpiece of the monument. The design also could incorporate secondarily the names of others who died in combat.

They don't deserve to be fought over like this.

WETHERALL

Continued from Page 5

sincere concern goes out to the two young [Japanese] students. I ask you not to assume that all Americans bear such hate and anger against those of our race."

Not . . . all Americans . . . hate . . . those of our race?

There is something very subtly discriminatory about this grammar. The contrast of "all Americans" with "our race" suggests two thoughts, both disturbing, the first undoubtedly unintended, the second obviously implied: (1) Japanese Americans are not Americans (if Nakagawa's heart of linguistic hearts thought otherwise, he would have written "not all non-Asian Americans" or "not all non-Japanese Americans"); (2) Japanese and Japanese Americans are members of the same (alleged) "Asian race", or they constitute the same (putative) "Japanese race".

Ironically, the Monitor box was right next to Nakagawa's column. I found myself laughing at the joke it reported about the Japanese government offering an American city to every child that's born, as an incentive to boost the country's falling birthrate. Such "takeover" jokes are funny compared to Nakagawa's well-meant but tellingly worded praise of courage, and plea for understanding and justice, in the wake of the racial violence at La Crosse.

This is only one example of how JACL representatives unwittingly help raise and maintain the barriers to understanding. Another example in the same issue of PC is the headline "Minorities Still Locked Out of Editorial Jobs in

U.S. Newspapers, ANPA Finds".

Minorities . . . locked out?
The article only says that, compared to their percentages in the general population, some minorities are under-represented in editorial jobs. Nothing in its summary of an American Newspaper Publishers Association survey supports the claim that some kind of agent is locking minorities out of such jobs, even metaphorically.

What's in a word? A lot, especially when usage reflects philosophically undigested sentiments about race and ethnicity, and chip-on-the-shoulder preconceptions of minority victimhood.

Asian Contingent Joins in ELA Chicano Parade

LOS ANGELES—A small but lively Asian American contingent marched behind drums and cymbals on Aug. 25 in East Los Angeles, commemorating the 20th anniversary of the National Chicano Moratorium Committee's peace rally.

Young Koreans in national dress, hoisting a banner reading "One United Korea" and "Self-Determination for the Korean People," were also present. Mo Nishida reported.



Kimura
PHOTOMART

Cameras & Photographic Supplies
316 E. 2nd St., Los Angeles, CA 90012
(213) 622-3968

KIRK ISHIZUKA

CAMPBELL'S
FLOWERS

Floral Designs
1431-7th St.
Santa Monica,
Calif. 90401

213-457-3322
Since 1945

CHIYO'S

JAPANESE BUNKA NEEDLECRAFT

Framing, Bunka Kits, Lessons, Gifts

2943 West Ball Road,
Anaheim, CA 92804 ■ (714) 995-2432

Available Exclusively To JACL
Individual Members And Group

The JACL-BLUE SHIELD Health Plan



Quality Blue Shield Coverage
At Special Rates For JACL Members

- Your Choice Of Doctors And Hospitals
- Wide Range Of Benefits Including Professional Services, Hospitalization, And Dental Coverage
- Includes HEALTHTRACSM — a personal wellness program to help keep you healthy
- Over 36,000 Physician Members To Help You Save On Out-Of-Pocket Expenses
- Up To \$2,000,000 in Lifetime Maximum Benefits
- Worldwide Coverage
- A JACL Endorsed Health Plan Backed by Nearly 50 Years Of Blue Shield Experience

JACL members 18 and over may apply to enroll in the Blue Shield of California Group Health Plan sponsored by JACL. Applicants and dependents under age 65 must submit a statement of health acceptable to Blue Shield before coverage becomes effective. Members age 65 and over, covered under Medicare parts A and B, may join without a health statement.

For More Information, Write Or Call Today:
(415) 931-6633

Yes! I want to know more about the JACL-Blue Shield of California Group Health Plan.

- I am a member of _____ chapter.
 I am not a member of JACL. Please send me membership information. I understand that JACL membership is required to obtain this coverage.

Name _____ Age _____
Address _____
City/State/Zip _____
Phone (____) _____ Work Home

Send To: Frances Morioka, Administrator
JACL-Blue Shield of California Group Health Trust

1765 Sutter Street, San Francisco, California 94115

TOYO
Myatake
STUDIO

SAN GABRIEL VILLAGE
235 W. Fairview Ave., San Gabriel, CA 91776
(213) 283-5685, (818) 289-5674

LITTLE TOKYO
114 N. San Pedro St., Los Angeles, CA 90012
(213) 626-5681, 626-5673

Classified Ads



1000 Club Report

(Year of Membership Shown)
 * Century; ** Corp/Silver; *** Corp/Gold;
 **** Corp/Diamond; L Life; M Memorial

The 1989 Totals (Since Nov. 30, 1989)
 1990 Summary (Since Nov. 30, 1989)

Active (previous total)	(1328)
Total this report: #32	(12)
Current total	(1340)
Life, C/Life, Memorial total	(2)

July 30-Aug 3, 1990 (12)

Alameda: 23-Shigeo Futagaki.
 Detroit: 6-Kathleen I Yee, 7-Ronald C Yee.
 Florin: 23-Dr Kenneth H Ozawa.
 Mt Olympus: 21-Charles S Kawakami.
 Sacramento: 35-Yasushi Ito.
 Salinas Valley: 32-Paul T Ichiji.
 San Francisco: 29-Sim S Seiki.
 Seattle: 12-Sherlock S Shinbo.
 Washington, DC: 34-Robert S Iki.
 West Los Angeles: 28-Dr Akira Nishizawa.
 Wilshire: 42-Fred K Ota.

CENTURY CLUB*
 21-Fred K Ota (Wil) (1340)
 Active (previous total) (1328)
 Total this report: #32 (12)
 Current total (1340)
 Life, C/Life, Memorial total (2)

Aug 6-10, 1990 (38)

Berkeley: 37-Tokuya Kako*, 24-Peter N Kawakami, 27-Ted T Mayeda.
 Chicago: 1-June Hall, 36-George M Ikegami, 2-Leland K Nomura.
 Contra Costa: 30-Satoru Nishita.
 Detroit: 16-David G McKendry, 28-James N Shimoura.
 East Los Angeles: 3-Mark S Ishimatsu.
 Eden Township: 8-Ted Kitayama.
 Florin: 1-Mrs S Ogata.
 Fresno: 7-Henry H Kubow.
 Houston: 4-Theresa K Narasaki, 4-George Watanabe, 4-Lily Yamasaki.
 Marina: 5-Sophie F Namba, 10-Hank Y Sakauye.
 Marysville: 42-Hizeko Yoshimura.
 Mile Hi: 34-Yutaka Terasaki.
 New Mexico: 14-Ronald Shibata.
 New York: 25-Michael M Watabe*.
 Orange County: 30-Harry H Nakamura*.
 Riverside: 5-Mitsuru Inaba.
 Sacramento: 29-Louis Sato.
 St Louis: 3-Cathy M Hironaka.
 San Diego: 35-Dr Shigeru Hara.
 San Fernando Valley: 16-Marvin Kroner.
 San Francisco: 37-David Taxy Hironaka, 24-Y Hironaka, 10-Takeshi Koga, 26-Maury A Schwarz.
 San Jose: 28-Tad Sekigahama.
 San Mateo: 37-Tad T Masaoka.
 Seattle: 9-Kenneth Mayeda.
 Spokane: 37-Tetsuo Nobuku.
 Washington, DC: 4-Gerald H Yamada.
 National: 10-Dennis R Sugino.

CENTURY CLUB*
 3-Tokuya Kako (Ber), 19-Michael M Watabe (NYO), 10-Harry H Nakamura (Ora).

Los Angeles Japanese Casualty Insurance Assn.

COMPLETE INSURANCE PROTECTION

- Aihara Insurance Agy. Inc.**
 250 E. 1st St., Los Angeles 90012
 Suite 700 626-9625
- Anson T. Fujioka Insurance**
 321 E. 2nd St., Los Angeles 90012
 Suite 500 626-4393
- Funakoshi Ins. Agency, Inc.**
 200 S. San Pedro, Los Angeles 90012
 Suite 300 626-5275
- Ito Insurance Agency, Inc.**
 Howe Bldg, 180 S Lake Ave., #25, Pasadena, 91101
 (818) 795-7059, (213) 681-4411 L.A.
- Kagawa Insurance Agency Inc.**
 360 E. 2nd St., Los Angeles 90012
 Suite 302 626-1800
- Kamiya Ins. Agency, Inc.**
 120 S. San Pedro, Los Angeles 90012
 Suite 410 626-8135
- The J. Morey Company, Inc.**
 11080 Artesia Bl, Suite F, Cerritos, CA 90701
 (213) 924-3494 / (714) 952-2154 / (408) 280-5551
- Steve Nakaji Insurance**
 11954 Washington Pl.
 Los Angeles 90066 391-5931
- Ogino-Aizumi Ins. Agency**
 1818 W. Beverly Bl, Montebello, 90640
 Suite 210 (818) 571-6911 / (213) 728-7488 L.A.
- Ota Insurance Agency**
 321 E. 2nd St., Los Angeles, CA 90012
 Suite 604 617-2057
- T. Roy Iwami & Associates Quality Ins. Services, Inc.**
 3255 Wilshire Blvd., Los Angeles 90010
 Suite 630 382-2255
- Sato Insurance Agency**
 366 E. 1st St., Los Angeles 90012
 626-5861 629-1425
- Tsuneishi Ins. Agency, Inc.**
 327 E. 2nd St., Los Angeles 90012
 Suite 221 628-1365
- AHT Insurance Assoc., Inc.**
 dba: Wada Asato Associates, Inc.
 16500 S. Western Ave, Gardena, CA 90247
 Suite 200 (213) 516-0110

Think First of 'PC' Advertisers

ASSISTANT EDITOR

Challenging opportunity to expand a long-established, important Japanese American publication.

Candidate should have strong editing and writing skills. Knowledge of Japanese American community a must. Background in desktop publishing, graphic design and photography preferred.

Salary commensurate with experience. Range: \$18,000 to \$23,000. Exemplary performance will ensure professional advancement.

Submit resume, sample articles and a brief letter on your professional objectives to Pacific Citizen Editorial Search Committee, 941 E. 3rd St. Suite 200, Los Angeles, CA 90013; (213) 626-3004.

EOE

A JACL SPECIAL:

JACL in Quest of Justice

By BILL HOSOKAWA

"Only by telling and retelling the JACL story could new generations of Americans, including the Japanese Americans themselves, know and understand not only how JACL was organized, developed and functioned during World War II and thereafter, but also how, in a democracy citizens' organizations like JACL could render vital and viable public services to their own memberships and constituencies and also to the public and nation at large."
 — MASAO W. SATO

Now Available at \$30 per Case (24 books per case)
 Freight/Shipping Extra (estimate 50 cents per book)
 SINGLE COPY SALE: \$5.00, includes Shipping First-Class Priority Mail Anywhere in U.S. Only

Pacific Citizen, 941 E. 3rd St., Los Angeles, CA 90013

Please send _____ copies of "JACL in Quest of Justice". Amt Enclosed: _____

Name: _____

Address: _____

City, State, ZIP: _____

4—Business Opportunities

B.C. CANADA
 By Retiring Owner
GENERAL STORE
 Small central interior town. No competition for 20 miles. Full price \$425,000 which includes stock and 3 bdrm home etc. Requires \$125,000 down. Serious inquiries only please. Phone Dave at (604) 676-9233. Or write: Box 36, Vaventy, B.C., V0E 3A0 Canada.

ALBERTA, CANADA
 Attn Investors
FOR SALE or LEASE
 Modern 5000 sq ft restaurant in resort town of Sylvan Lake. Restaurant comes fully equipped, ready for business.
 (403) 343-0144
 Stan or Albert

B.C. CANADA
 Lucrative business for sale! Sporting goods store, loc in the Mackenzie Center Mall in the rapidly expanding town of Mackenzie, B.C. 120 miles north of Prince George. Will train. Serious enq only (604) 997-5909 or write Bag 4000, Mackenzie, B.C. V0J 2C0 Canada.

CALGARY, ALBERTA
AUTOMOTIVE REPAIR
 19 years this location, healthy & growing 4 bay shop with fuel pumps, high density traffic flow, affluent neighborhood. Over 1.6 million in sales, equipped for today's cars. Owner available to train and help you get started. For appt, (403) 256-7750

B.C. CANADA—Beautiful picturesque loc'd restaurant with adjoining conven store, Chevron Service Stn, propane filling stn, on approx 5 acres of land, loc in a beautiful Mtn Valley on Hwy 37 outside Cassiar in Northern B.C. 80 mi from Alaska Hwy. No Municipal taxes, selling price, \$1,200,000 with option to buy adjoining property with beautiful lge mobile home on 2 1/2 acres land, commercial zoned. Please call (604) 778-7549, lve msge or write: BH & B Holdings, Box 248, Cassiar, B.C. V0C 1E0.

CANADA
CHETWYND, B.C.
New PULP MILL Fall '90
12 UNIT MOTEL
1.75 acres approx.

Room for expansion, or subdivision. Booming tourist & forest industry. 4 bedroom manager's suite. Campground and shower income, also trailer pads, and rental pads. Steady business, on main highway, near airport.
 Phone (604) 788-2460
 Or write to:
 Box 604, Chetwynd,
 B.C. V0C 1J0 Canada.

MEDICAL OPPORTUNITY
 Multi-Specialty Medical Group/HMO with \$25,000,000 annual gross and growing! Long Beach/Orange County, California areas. Five medical locations, four pharmacies, turn key operation with management in tack for investors who want to be in a recession proof health care field. Inquiries to: P.O. Box 69580, Los Angeles, CA 90069.

5—Employment

INTELLIGENCE JOBS! F.B.I., C.I.A., U.S. Customs, D.E.A., etc. Now Hiring. Call (805) 687-6000 Ext. K-1317.

\$40,000/yr! READ BOOKS and TV Scripts. Fill out simple "like/don't like" form. EASY! Fun relaxing at home, beach, vacations. Guaranteed paycheck. **FREE** 24 Hour Recording. (801) 379-2955 Ext. CE476B.

ASIAN AMERICANS UNITED, a progressive non-profit organization whose programs focus on youth, education and anti-Asian violence, has job openings for people committed to social change. Applicants must have an interest in working with youth in Asian American communities.

YOUTH PROGRAM COORDINATOR
 \$15,000 - \$20,000
EXECUTIVE DIRECTOR
 \$25,000 - \$2,500

Send resume and cover letter by September 30, 1990 to:
 Asian Americans United
 801 Arch Street
 Philadelphia, PA 19107
 (215) 925-1538

Don't wait to see the movie . . .
 Read the book!
 Some of the most interesting books on America are not on sale in your local bookstore, and they will never be made into Hollywood movies. But even so, these books are among the most popular in the nation, widely read by people just like you.

ASK YOUR LIBRARIAN.

5—Employment

GOVERNMENT JOBS \$16,040 - \$59,230/yr. Call (805) 687-6000 Ext. R-1317 for current Federal list.

Live-In Babysitter/Au Pair
 Needed a few hours daily. Japanese speaking preferable, English and Japanese spoken in home. \$125 - \$150 per week, increase neg. with housework.
 Manhattan Beach, CA
 Hugh Winokur
 (213) 617-5962

Medical Technologist
 We are a rapidly growing clinical reference laboratory in Irvine specializing in cancer diagnosis & treatment. We have Full Time positions available. Salary commensurate w/exp. Good benefits package. Current California Medical Technologist license required. Must speak and write English.
 Contact Jeri Fender
 Oncotech Inc.
 1791 Kaiser Ave.
 Irvine, CA 92714
 (714) 474-9262
 EOE

6—For Sale

CHEAP! FBI/U.S. SEIZED

84 VW	\$50
87 Mercedes	\$200
85 Mercedes	\$100
65 Mustang	\$50

Choose from thousands starting \$25. **FREE** 24 Hour Recording Reveals Details (801) 379-2929 Ext. CJ476C U.S. HOTLINE copyright.

9—Real Estate

Charming Ocean Front Two Story on XTRA Large Corner Lot. Light Bright & great Investment Potential in Sunset Beach, CA, with surrounding homes at 2.5+ million. \$1,785,000. Agt (714) 840-5440.

Must Sell
Prime Commercial Building
 22,425 sq ft. Walking distance to new sports stadium. Steal this prime property for \$900,000. Appraised in 1984 at \$1.2M. Great owner/user building. Present owner consider lease back. Bring all offers. Located at 1066 The Alameda, San Jose, CA. Phone (408) 294-9500.

Colorado Mountain Home
 Clean air, beautiful views, 2 + acres, 1830sf, large cathedral living room, 13 x 21 kitchen/breakfast room, laundry room, pantry, formal dining, 2 Ba, 3 huge Br, lge master has bath/dressing walk in closet, solar, electric, gas & heat, double garage, many out bldgs. \$75K. (719) 589-8238.

9—Real Estate

CANADA Vancouver 111 ac. Approx 1800' ocean front. Waterfall. 11 mins from Vancouver Airport. Water access only. Sub-dividable. \$275K US. (604) 594-1092. Pp. Fax (604) 594-0764. Box 33003 Norder Postal Outlet, Delta, B.C., V4C 8E6, Canada.

ONTARIO, CANADA
 Private Sale. Beautiful resort Sheguiandah Bay, Lake Huron, Manitoulin Island. 12 fully furn. housekeeping cottages, one 4 bdrm house, store, toolsheds, etc. Excellent fishing, docking, beach. 10 mins from Little Current. Reasonably priced at \$250,000. Has to be seen. (705) 368-3850.

CANADA
 Attn Investors
 50 acres in a snow capped mountain valley, Yukon Territory, excellent fishing lodge/campground potential, 1/4 mile lake & hwy frontage. One of the only full titled commercially zoned acreages available in Yukon. \$175,000. (416) 428-0034.

10—Rental

LOS ANGELES, CA
HOLLYWOOD BRAND NEW
LARGE ONE & TWO BEDROOM APTS.
 Pool, jacuzzi, gym, individual security system, fireplaces, gated garage & more.
 From \$775 & up
 1200 No. June St.
 (213) 466-4004

LOS ANGELES, CA
HANCOCK PARK LUXURY
 2 BR/2 BATH, individual security system, fireplace, roof top pool & jacuzzi, gated parking. ACROSS FROM WILSHIRE COUNTRY CLUB.
 From \$1345 & up
 500 N. Rossmore
 (213) 465-3095

LOS ANGELES, CA
Luxury Hancock Park Adj.
 2 Br/2 Bath, fireplace, a/c, pool, gated parking. Beautiful bldg.
 Quality apt from \$900.
 (213) 388-4336
 550 S Gramercy.

11—Travel

DEEP VALLEY OUTFITTERS
 Licensed, Bonded, Insured Outfitter. Specializing in Moose, Whittail, Mules, Wolf and Spring & Fall Black Bear. Bow Hunters Welcome. Call now for immediate booking! 1990 wide open, plenty of oar. Bill Wentworth, General Delivery, Stony Plain, Alberta, Canada T0E 2G0. Phone (403) 963-7509. Mobile, (403) XJ6-3350.

National Business & Professional Directory

Your business card in each issue for 25 issues is \$15 per line, three-line minimum. Larger type (12 pt.) counts as two lines. Logo same as line rate as required.

Greater Los Angeles
ASAHI TRAVEL
 Supersavers, Group Discounts, Apex Fares
 Computerized-Bonded
 1543 W. Olympic Blvd, #314, L.A. 90015
 (213) 487-4294 • Call Joe, Gladys or Hazel

FLOWER VILL GARDENS
 Flowers, Fruit, Wine & Candy
 • Citywide Delivery/ Worldwide Service
 1801 N. Western Ave., Los Angeles 90027
 (213) 466-7373 / Art & Jim Ito

Dr. Darlyne Fujimoto
 Family Optometry & Contact Lenses
 11420 South St, Cerritos, CA 90701
 (213) 860-1339

TAMA TRAVEL INTERNATIONAL
 Martha Igarashi Tamashiro
 626 Wilshire Bldg., Ste 310
 Los Angeles 90017; (213) 622-4333

Orange County
Victor A. Kato
 (714) 841-7551 • Exceptional Real Estate
 17301 Beach Blvd., Suite 23
 Huntington Beach, CA 92647

Dr. Ronald T. Watanabe
 CHIROPRACTOR
 7102 Edinger Avenue
 Huntington Beach, CA 92647
 (714) 846-0584

North San Diego County
 • **Realty Executives** •
 1817-A Vista Way, Vista, 92083
 Ask for K. J. Sameshima - Dedicated Service
 Office (619) 758-2300, Res. (619) 726-5052

San Diego, Calif.
Paul H. Hoshi Insurance
 852 - 16th St., San Diego, CA 92101
 Office (619) 234-0376 Res. (619) 421-7356

WENDY JO NIWA, Realtor
 Office (619) 566-2810 Res. (619) 284-2846

San Jose, Calif.
EDWARD T. MORIOKA, Realtor
 (408) 559-8816 a.m. : 998-8334 p.m.

Watsonville, Calif.
Tom Nakase Realty
 Acreage, Ranches, Homes, Income
TOM NAKASE, Realtor
 25 Clifford Ave. / (408) 724-6477

San Francisco Bay Area
Y. KEIKO OKUBO
 Ten Million Dollar Club
 46703 Mission Blvd.,
 Fremont, CA 94539 (415) 683-0600

VETERAN REAL ESTATE sm
HAZEL BUTTERFIELD—Residential Specialist
 6298 Mission St., Daly City, CA 94014
 Office: (415) 991-2424, Pager: (415) 637-6424

Sacramento, Calif.
SHARON NODA, GRI
COOK REALTY
 Residential/Investments
 (916) 451-1401 - Res. Ofc.
 (916) 567-9050 - Voice Mail

Seattle, Wash.
Imperial lanes
 Complete Pro Shop, Restaurant, Lounge
 2101-22nd Ave So., Seattle (206) 325-2525

UWAJIMAYA
...Always in good taste.

For the Best of Everything Asian.
 Fresh Produce, Meat, Seafood and Groceries.
 A vast selection of Gift Ware.

Seattle • 624-6248
 Bellevue • 747-9012

The Internountain
Mam Wakasugi / Blackaby Real Estate
 190 SW 4th Ave., Ontario, OR 97914
 (503) 881-1301 or (503) 262-3459

JACL PULSE

■ FLORIN
Florin JACL sponsors fall talent show Oct. 12 at Sacramento Buddhist Church; dancers, vocalists, pianists, instrumentalists, etc., are encouraged to participate. Info: Pearl Zarilla or Paul Takehara (both 916) at 635-2815 or 363-8800.

■ POCATELLO-BLACKFOOT
50th Anniversary Reunion of JACL members from Rexburg, Idaho Falls and Pocatello, Sat., Nov. 3, at Cactus Pete's in Jackpot, Nevada. Banquet, keynote speakers (including Nat'l Pres. Cressey Nakagawa), renewing old friendships and meeting new friends.

■ STOCKTON
Tomo No Kai Grand Canyon Tour, hosted by Stockton Buddhist Temple, Sept. 18-25, 1990; \$620 per person, double occupancy; additional \$165 supplement added for single accommodations. Info: (209) 982-0939.

■ TRI-VALLEY
Mixed Doubles Tennis Tournament, Cal State Hayward, sponsored by Tri-Valley JACL, Oct. 13. Info and application form: (415) 846-4165

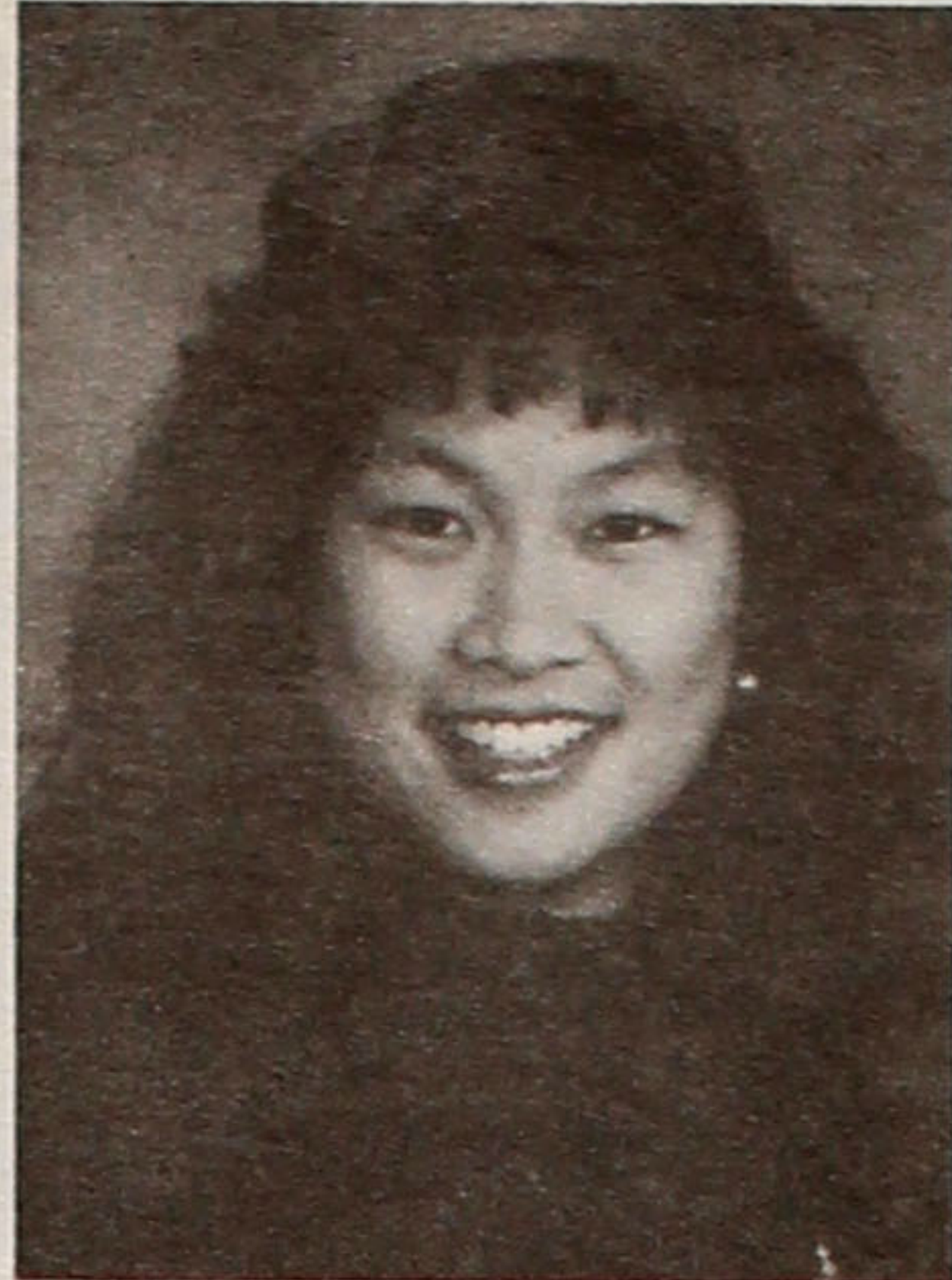
■ WHITE RIVER VALLEY
The White River Valley JACL is commemorating its 60th Anniversary on Sat. Sept. 15, at a pot-luck held at the Senior Center in Auburn, WA from 1 - 4 p.m. All members 75 years and older will be recognized, and all former presidents will be honored. They will be coming from Tokyo, Ontario, Ore., and Seattle, as well as from the local community. Cherry Kinoshita will be the featured speaker, and Michelle Cullen will be a soloist. The Pacific Northwest chapter and friends in the community are encouraged to attend. Info: Dan and Grace Hironaka (206) 852-5076.

Items publicizing JACL events should be typewritten (double-spaced) or legibly hand-printed and mailed at least THREE WEEKS IN ADVANCE to the P.C. office. Please include contact phone numbers, addresses, etc.

THE NEWSMAKERS



DR. CLIFF UEJIO



MICHELLE KAWANO

► Dr. Cliff Uejio has been named instructional dean at Long Beach City College, the post he has held in an interim capacity for the past 18 months. Before assuming his current role, he founded and coordinated the honors program, the oldest continuously operating community college program of its type in the state, offering 27 different courses from 11 departments. In addition, he headed the Center for Learning Assistance Services, overseeing more than 50 full- and part-time instructors, student tutors, and support staff on two campuses. Prior to that, he was an English instructor. He has a bachelor's degree from the University of Hawaii in psychology and philosophy; a master's degree in English from CSU Los Angeles; and a doctorate in English from SUNY-Buffalo. He received a second master's from UCLA in Japanese language and culture. Dr. Uejio received a Mellon Fellowship in U.S.-Japanese relations at Stanford University; and a fellowship to study East Asian language and culture at UCLA.

► The Franciscan Health Center sponsored by the Franciscan Sisters of the Sacred Heart, will hold its Community Service Awards Banquet on Sept. 25, 6 p.m. at the Hyatt Wilshire Hotel Grand Ballroom to honor retired police captain Frank Patchett, and Dr. Sakaye Shigekawa. For information and reservation, call (213) 413-1050. Dr. Shigekawa is in her 50th year of medical and volunteer services. During this time, she delivered more than 30,000 babies. Her interest in medicine began when her father had a long illness and hospitalization. She would ride street cars from Long Beach to Los Angeles to visit him at Good Samaritan Hospital. She was inspired with the doctors, and the late Dr. William Norris encouraged her to go to medical school. Dr. Shigekawa received her Bachelor's Degree from Loyola University's School of Medicine in Chicago.

Dr. Shigekawa returned to California to begin her medical practice but was interned at the Santa Anita Assembly Center. She began her practice delivering babies at the Center.

► Michelle Kawano currently based in Columbus, Ohio, is on her new exciting assignment as a Collegiate Development Consultant who will visit 26 campuses across United States during next school year and serve as a problem solver, consultant, motivator, confidant and adviser to the collegiate Delta Gamma Sorority chapters. Of the 129 collegiate sorority chapters of Delta Gamma in America and Canada, 8 Collegiate Development Consultants are selected annually. This year 125 applicants were narrowed down to 16 and all of them were flown to Executive Office of Delta Gamma headquarters at Columbus, where they were interviewed over a three-day period. Michelle was one of the eight selected for the 1990-1991 school year and is the first Asian to have this once-in-a-lifetime opportunity. She is a 1990 graduate of San Jose State University where she earned a Bachelor's degree in Liberal studies. She is the daughter of San Jose JACLer Norman and Janice Kawano. An active member of San Jose's Delta Gamma chapter and served as its treasurer and vice-president in charge of pledge education. Her honors in the sorority included the President's award for most outstanding officer and the Barbara Clark Memorial Scholarship. In addition, she was a member of San Jose State's Black Masque Academy Honorary, a women's honor society.

► Jerry C. Chang 67, of Sacramento was reappointed by Governor George Deukmejian as a member of the Health Care Advisory Committee. Chang was a project manager for Sacramento Municipal Utility District and a project engineer for the State Department of Water Resources in 1987.

► The Rev. Roland W. Brammeier was appointed to Centenary United Methodist Church as pastor of the English Section by Bishop Jack Tuell of the California-Hawaii United Methodist Church Annual Conference, announced George Takeyama, Chairman of the Pastor-Parish Relations Committee. Rev. Brammeier was on a leave of absence since July 1, 1989, following four highly successful years as Superintendent of the Los Angeles District when he agreed to fill the vacancy created by the appointment of the Rev. George Nishikawa to a national board on Sept. 1.

ED SATO
PLUMBING & HEATING
Remodel and Repairs, Water Heaters
Furnaces, Garbage Disposals
Serving Los Angeles, Gardena
(213) 321-6610, 293-7000, 733-0557

Commercial & Industrial
Air-Conditioning and Refrigeration
Contractor
Glen T. Umemoto
Lic. No. 441272 C38-20
SAM REIBOW CO., 1506 W. Vernon
Los Angeles - 295-5204 - Since 1939

SHORT & SMALL MENSWEAR
FOR THE PROFESSIONAL MAN.
Suits & Sport Coats in 34 - 44 Short and Extra-Short, also Dress Shirts, Slacks, Shoes, Overcoats and Accessories by Givenchy, Lanvin, Talia, Arrow, John Henry, London Fog, Sandro Moscoloni, Cole-Hann and Robert Talbot.
KEN & COMPANY
2855 STEVENS CREEK BLVD. SUITE 2249
SANTA CLARA, CA 95050
PHONE: 408 / 246-2177
LOCATED IN THE NEW VALLEY FAIR SHOPPING CENTER SECOND LEVEL, NEAR MACY'S.

1990 TANAKA TRAVEL TOURS
EXCEPTIONAL VALUE • TOP QUALITY TOURS
EAST COAST & FALL FOLIAGE (10 days) OCT 1
JAPAN AUTUMN ADVENTURE (Ext-Hong Kong) (14 days) OCT 8
UPCOMING 1991 TOURS
MEXICO YUCATAN & CANCUN (8 days) FEB 4
FLORIDA DISNEY-EPCOT & NEW ORLEANS (8 days) FEB 23
JAPAN SPRING ADV (Inc. Festival) (14 days) APR 10
JAPAN SHIKOKU-KYUSHU (13 days) May 13
YELLOWSTONE/MT. RUSHMORE (8 days) MAY 28
CALL OR WRITE TODAY FOR OUR FREE BROCHURES
TANAKA TRAVEL SERVICE
441 O'FARRELL ST., SAN FRANCISCO, CA 94102
(415) 474-3900

OBITUARIES

Charles J. Ajifu, 64, Los Angeles, Aug. 21; Honolulu-born, survived by w May, d Charlene (San Francisco), br Richard, sis Dorothy Murakami, Peggy Sakamoto (all 3 of Honolulu).

Masaru Akiyoshi, 65, Los Angeles, Aug. 6; Torrance-born, survived by br George, sis Satsuki, Yumiko Miyakawa, Teiko Fukushima, in-law Yoshiko Akiyoshi (Jpn).

Yukiko Anami, 69, La Cañada-Flintridge, July 30; survived by h Isei, s Kenneth, dChristine, Maureen, m Minoru Kishi, br Jim Kishi.

Toshiko Daita, 63, San Gabriel, July 29; Osaka-born, survived by s Thomas, Ted, d Evelyn, Stella, Abby Castillo, 2gc, br Morio and Yukinobu Sugimura (both Japan).

Shigeru Fujiwara, 77, Los Angeles, July 15; Lomita-born, survived by w Momoe, s Dr Tadao, 3gc, Masaye Mason Hatamiya, 69, Live Oak, Calif., June 18; survived by h Frank I, s Frank S, 1 gc, sis Fumiko Kida (Portland).

Miji Kanamori, 100, Oxnard, July 19; Miyagi-born, survived by s Tadashi, Tsugitada, Dr George, Shogo, d Mitsuye Ogata, Mary Sawamura, Yori Kanamori, Yaeko Matsutsumi, Kathy Kanamori, 16gc, 11gc, br Tomomoto Ito (Hokkaido).

Rose M Komatsubara, 64, Monterey Park, July 16; Hawaii-born, survived by h Jim K, s Gary J (Simi Valley), 2gc, 3br Yosh, Larry, Frank, 4sis Kiku Fukumoto, Tim Sakai, Ruby Osumi, Nancy Inao, in-law sis Ritz Mori.

Torao J Kusano, 63, Orange, July 18; Los Angeles-born Korean Conflict veteran, survived by w Emiko, s Mike, d Donna Joiner, Joyce Burch, Shan, 3gc, p Daisuke/Tome Kumano, br Asao, Shigeo, sis Yunko Hataye, Julia Maruyama.

Hatsuno Masuda, 66, Sacramento, July 10; Sacramento-born, survived by h Hiroshi, s Steve, Dick, Donald, Bob, d Nancy Tanaka, Pauline Sing, 9gc, 2gc, br Tom Okubo, sis Miyo Okubo.

Chiyoko M Nakahara, 79, Tarzana, July 18; San Francisco-born, survived by s Roy Hiroshi, Ed Toshio, br Jitsuo Takeda and sis Fujiko Kimoto (both Japan).

Monuments & Markers for All Cemeteries
櫛山石碑社
KUSHIYAMA SEKIHI-SHA
EVERGREEN MONUMENT CO.
2935 E. 1st St., Los Angeles, CA 90033
Bus: (213) 261-7279 - Res: (213) 283-5855

Serving the Community for Over 30 Years
KUBOTA NIKKEI MORTUARY
Formerly Shimatsu, Ogata & Kubota Mortuary
911 VENICE BLVD.
LOS ANGELES, CA 90015
(213) 749-1449
R. Hayamizu, President
H. Suzuki, V.P./Gen. Mgr. Y. Kubota, Advisor

Four Generations of Experience
FUKUI MORTUARY Inc.
707 E. Temple St.
Los Angeles, CA 90012
(213) 626-0441
GERALD FUKUI, President
NOBUO OSUMI, Counselor

Need Money?
Call us 1 800 544-8828

New vehicles 85% of purchase price Up to 60 months	9.9% APR
Share secured loans Up to 60 months	8.5% APR
Used vehicles 75% of average Blue Book Up to 42 months	11.5% APR
Signature Unsecured Up to 36 months	11.9% APR
Other secured loans Up to 36 months	11.5% APR

Nat'l JACL Credit Union
PO Box 1721 / Salt Lake City, Utah 84110 / 801 355-8040
Toll Free 800 544-8828 Outside of Utah

American Holiday Travel
ORIENT HOLIDAY TOUR Oct 21 - Nov 3
Visiting: Hong Kong, Bangkok, Kuala Lumpur, Malacca, Singapore.
Tour Escort: Ernest T. Hida
Co-sponsored tour with Asahi International Travel
Tour Cost: \$2490.00 per person/twin
SOUTH CARIBBEAN CRUISE Nov 2 - 10
Visiting: San Juan, Curacao, Caracas, Grenada, Martinique, St. Thomas.
Tour Escort: Yuk Hino
Co-sponsored tour with Asahi International Travel
Tour Cost: \$1557.00 per person/twin, outside cabin
SOUTH AMERICA JAPANESE HERITAGE TOUR Nov 10 - 21
Visiting: Sao Paulo, Rio de Janeiro, Iguassu Falls, Buenos Aires.
Dinners with local Japanese in Sao Paulo and Buenos Aires.
Visit Japanese owned farms.
Tour Escort: Ernest T. Hida
Tour Cost: \$2295.00 per person/twin
For further information and reservations, please write or call:
AMERICAN HOLIDAY TRAVEL
368E. 1st St., Los Angeles, CA 90012 (213) 625-2232
YAEKO
3913 1/2 Riverside Dr., Burbank, CA 91505 (213) 849-1833
ERNEST & CAROLHIDA (818) 846-2402

Japanese American Travel Club
ENDORSED BY THE NATIONAL JACL
3131 Camino del Rio North, #1080, San Diego, CA 92108
TOURS AND CRUISES
Elaine Sugimoto, Managing Director; Sami Kushida, Sales (619) 282-3581
Toll-Free U.S. (800) 877-8777, ext. 215; Hrs: 8-5, M/F; Fax: (619) 283-3131

JAPAN
JAPAN DISCOVERY TOUR . FROM \$1460.00
PACKAGE INCLUDES:
* Roundtrip air on ALL NIPPON AIRWAYS from Los Angeles
* 6 nights accommodations at the ANA TOKYO HOTEL
* Half day Tokyo City Tour
* Roundtrip airport/hotel transfers
AVAILABLE EXTENSIONS:
* INLAND SEA TOUR - KYOTO, HIROSHIMA, TOMONOURA, KURASHIKI, OKAYAMA & OSAKA
* TRANS-KYUSHU TOUR - FUKUOKA, BEPPU, MT. ASO, KUMAMOTO, NAGASAKI & KYOTO
* SAPPORO & KYOTO
FALL FOLIAGE TOURS
Autumn in New England From \$1,055
7 Days / 6 Nights, Depart from New York and visit Lake George, Lake Placid, New Hampshire Mountains, the Rocky Coast of Maine, Boston, Lexington & Concord and Bennington and Stockbridge. Airfare is additional.
Departures: Daily from Sept. 10 - Oct. 20, 1990.
Grand Autumn New England From \$1,725
11 Days / 10 Nights, Depart from New York and visit Lake George, Lake Placid, Adirondacks, Lake Champlain, Plymouth, Woodstock, Vermont, Mt. Washington, Maine's Rocky Coast, Gloucester, Salem, Boston, Plymouth and Mystic Seaport. Airfare is additional.
Departures: Daily from Sept. 3 - Oct. 20, 1990.