

THE PACIFIC CITIZEN

Established 1929

National Publication of the Japanese American Citizens League

(75¢ Postpaid U.S.) Newsstand: 25 Cents

#2,589

Vol. 111 No. 8

ISSN: 0030-8579

941 East 3rd St., Suite 200, Los Angeles, CA 90013

Friday, September 21, 1990

Matsui Criticizes Census Bureau for Method on Counting

WASHINGTON — In testimony Sept. 10, before a congressional subcommittee, Rep. Robert T. Matsui (D-Calif.), said the Census Bureau has "jeopardized the validity of the 1990 Census" by failing to create separate strata for Asian Pacific Islanders in the post-enumeration survey.

"It appears, once again, that Asian-Americans will suffer actions by the Census Bureau that not only contribute to an undercount of Asian Pacific Islanders, but which also demonstrate a continued insensitivity on the part of the Bureau toward Asian-Americans as a minority group," said Matsui.

Matsui urged the Census Bureau to modify its procedure quickly so an accurate count of Asian Pacific Islanders and access to critical resources for Asian-American communities can both be ensured.

Reps. Matsui and Norman Y. Mineta (D-Calif.) earlier this summer had sent a strongly-worded letter to officials involved in the census protesting the Bureau's post-enumeration procedure. In 1988 and 1989, Reps. Matsui and Mineta led the effort to force the Census Bureau to include a special check off for tabulation of nine distinct Asian or Pacific Islander groups on the census form. The success came despite initial reluctance from the Census Bureau.

New Civil Rights Chief in Education Dept. Praised

WASHINGTON—Michael L. Williams, new director for the Office of Civil Rights in the Department of Education, will finish studies of alleged discrimination against Asian Americans who applied to leading universities, the *Chronicle of Higher Education* reported Sept. 5. The report on Harvard and UCLA should be completed by October, he said.

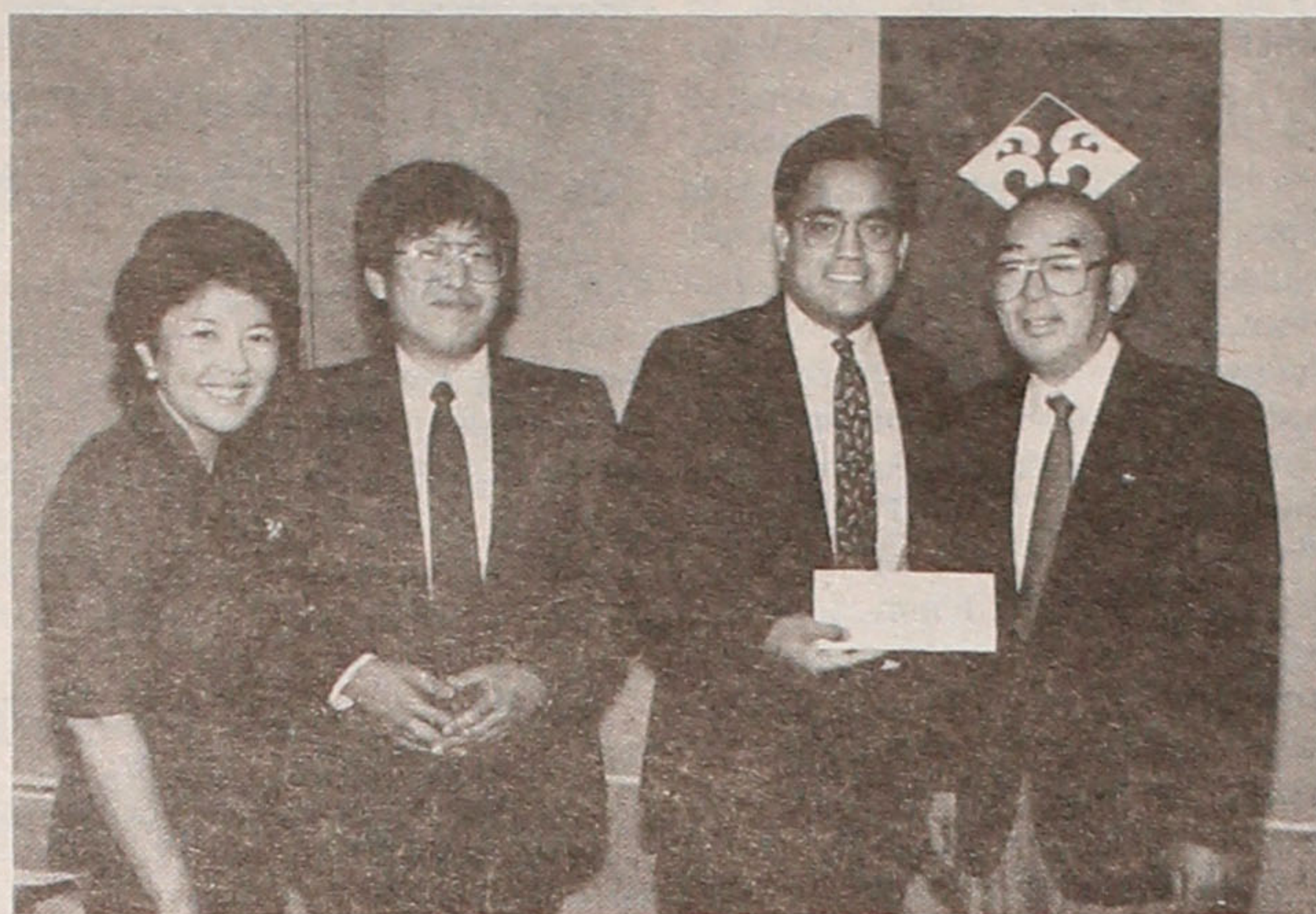
After being office but two months, past critics of the OCR at Education have been in praise of Williams and his settling of priorities, including for the first time a formal fulfillment strategy on its enforcement responsibilities.

"His approach is totally different, and very much needed and welcomed," said Phyllis P. McClure, who has monitored the civil rights office for the NAACP Legal Defense and Educational Fund.

DeRussy Museum Honors 100th, 442nd

HONOLULU—The U.S. Army Museum at Fort DeRussy in downtown Honolulu was renovated and dedicated Aug. 31 with Nisei veterans in attendance.

While the new gift shop and reception area was dedicated, most came to see the permanent display honoring Hawaii's "Go For Broke" veterans of the 100th and 442nd.



ANHEUSER-BUSCH INC. SUPPORTS the Japanese American National Museum as Manabi Hirasaki (right), a trustee and chairman of the Museum Associates accepts \$2,500 check from Anheuser-Busch district manager Edmundo Macias (center right) as Irene Hirano (left), JANM director, and Daniel Kang, representative, Ace Beverage Co., join in photo session. The gift will support the Museum's exhibits series, including "Centennial Celebration: An Early Pictorial Record of the Japanese in Hawai'i," featured during Nisei Week in Little Tokyo.

ROBERT P. ITO OF SAN DIEGO:

Founder Returns to Head Agency to Train and Place Low Income, Jobless

SAN DIEGO — Robert P. Ito, 39, has been named chief executive officer of Occupational Training Services, Inc. (OTS), which he founded in 1973 and built into one of San Diego's most successful job training agencies in the 1980's. OTS has trained and placed into jobs thousands of unemployed and low income San Diego residents through such federal and state funded programs as the Job Training Partnership Act (JTPA) and California Employment Training Panel.

A San Diego native, he was raised in Encanto on a successful vegetable farm operated by his father and grandfather. He received a Bachelor of Arts in Sociology in 1972 from United States International University and a Masters in Social Work Administration in 1974 from San Diego State University.

After founding OTS in 1973, Ito served as program administrator for the Private Industry Council from 1974 to 1982. He was responsible for the administration of more than \$150 million in federal job training funds during that period. He returned to OTS in 1982.

Ito has also enjoyed a simultaneous interest in real estate development. As general partner of Mansfield Villas Ltd., a limited partnership, Ito developed and marketed eight townhouses in Normal Heights. He also developed a professional office building in Oceanside in 1989 and was one of the founders of Zigman Shields General Contractors.

Ito has been actively involved in the San Diego community. He was general chairman of the last National JACL Convention in San Diego. He is chief financial officer of San Diego Crime



ROBERT P. ITO

Stoppers; president of the board of the San Diego Incubator Corporation; vice president of the board of Kiku Gardens, Inc.; board member of the San Diego chapter of the Japanese American Citizens League (JACL); member of United Way Contact Team; and member of LEAD Alumni.

Ito is married with two sons, age 8 and 3. His wife, Edna, is a sergeant with the San Diego County Sheriff's Department.

N.Y. Mayor's Commission Issues Report on Black Boycott of Korean Stores

NEW YORK—Mayor David Dinkins's commission to investigate a black boycott of two Korean grocery stores in Brooklyn's Flatbush section issued its report Aug. 30, which the *New York Times* editorial said, "makes even the cynics look starry-eyed."

The Times reminded the cynics had suggested the commission was appointed to "diffuse responsibility for an intolerable display of racism." The editorial said,

"The report ignores the point (of racism) and so does Mr. Dinkins: the longer racism is appeased by weak leadership, the more emboldened will be New York's already ragged race relations. And make no mistake. The Flatbush boycott, which the report deals with, and a second boycott now underway in the Brownsville neighborhood, are racist."

Nat'l JACL Legacy Fund Campaign Eyes \$10 Million in 3 Years for Programs

JACL, the oldest and largest Asian American civil and human rights organization in the United States, kicks off its Legacy Fund Campaign this month. This fundraising campaign is the first major national effort to raise funds for the organization since the campaign of 1952 to establish an endowment after the payments of the Evacuation Claims Act.

Purpose of the JACL Legacy Fund is to establish a perpetual endowment from which only the earnings will be used to implement the organization's mission, its objectives, and its biennial Program for Action, Grayce Uyehara, JACL Legacy Fund Campaign Chair, announced this week.

The fundraising goal is \$10 million over a three-year period commencing in September, 1990.

The campaign committee is composed of:

National President Cressey Nakagawa, National Director Bill Yoshino, National Secretary/Treasurer Tom Nakao, and the eight District Council Governors: Les Hata, NCWNPDC; Dale Ikeda, CCDC; J.P. Hokoyama, PSWDC; Robert Sato, PNWDC; Randy Hirano, IDC; Randy Shibata, MPDC; Henry Tanaka, MDC; and Grayce Uyehara, EDC.

At the August 24-5 Legacy Fund steering committee meeting in San Francisco, the committee was changed to the Campaign Committee. The committee selected Grayce Uyehara of Medford to chair the campaign with approval of the National Board.

Besides implementing JACL's mission and the biennial Program for Action, funds will be distributed to the chapters and to chapter district programs on the Program for Action submitted by proposals and approved by the National Board.

20% to Chapters

Twenty percent of the annual earnings of the Legacy Fund shall be remitted to the chapters through the District Councils for the Life of Fund in direct proportion to the amounts raised by the chapters. Any distributions related to donations which are not specifically attributable to a chapter shall be remitted to the appropriate District Council. This distribution shall commence in January 1992.

Ten percent of the earnings of the Fund shall be annually available for the chapter and district programs for the life of the Fund.

Message from Nakagawa

Cressey Nakagawa in his recent letter, "A Message to Our Members", defined the role of JACL in the 1990s.

Keeping in mind that the prime mission of JACL is to secure and uphold the human and civil rights of Americans of Japanese ancestry and all others, and to promote and preserve the cultural heritage and value of Japanese Americans, the need for a strong JACL remains.

The two high-priority goals voted by the delegates to the 1990 biennial convention were:

(1) Reduce occurrence of anti-Asian violence and

(2) assure that U.S. history books reflect accurately the Japanese American and other Asian American experiences.

"The selection shows that we have

much unfinished business as an organization. There were other program concerns of major importance to our community," Nakagawa said.

In mid-October, every JACL member will be receiving complete information packets on the JACL Legacy Fund. Included will be the contribution cards for tax-deductible contributions this year and a space for pledges for the following years for those who wish to make such commitments to JACL.

Attainable Goal

The goal of ten million dollars is an attainable goal, different from the other major effort to establish an endowment in 1952. At that time, many Japanese

Continued on Page 8

Fujimori's Request for Japan's Help Seen in 120 Trucks

TOKYO — The Liberal Democratic Party announced Sept. 4 to present Peru with a fleet of 120 trucks for transport of relief goods to drought-stricken areas, the *Mainichi Daily News* reported.

The 300-million-yen gift is in line with requests made by President Alberto Fujimori. LDP Secretary-General Ichiro Ozawa said he telephoned Fujimori to inform him of the gift.

Fujimori, who was sworn in as president on July 28 to become the first national leader of Japanese descent overseas, complained of a shortage of trucks to carry aid materials and asked for help when he visited Japan in early July.

The trucks are in addition to the \$4 million in assistance that Japan's government pledged July 27 to help ease damage caused by the drought, Ozawa said.

Delivery of the trucks, which range from one to three tons, was to begin Sept. 10.

Ozawa said Fujimori thanked the LDP for the new offer and asked for cooperation in future assistance. The LDP also hopes to send used cars to Peru if the need arises in the future.

1990 Excellence 2000 Award Night to Honor Asian Americans

WASHINGTON—To mark a decade of excellence in the Asian American community, the U.S. Pan Asian American Chamber of Commerce and the Organization of Chinese American Women are hosting an award banquet Sept. 27 at the Hyatt Regency, 401 New Jersey Ave. NW.

Two Japanese Americans being honored are:

Kristi Yamaguchi (Fremont, Calif.), national pairs gold medalist in figure skating; Grant Ujifusa (Chappaqua, N.Y.), senior editor, Reader's Digest.

The other ten—Amar G. Bose, Ph.D.; Rear Admiral Ming E. Chang (Inspector General, Dept. of Navy); Jorge M. Garcia, M.D. (Washington Hospital Center); Raymond Ho (Maryland Public Television); Narayan Keshvan, diplomatic analyst; Sheriff Harry Lee (Metairie, La.); Sammy Lee, M.D. (Huntington Beach, Calif.); Haing S. Ngor (actor in the "Killing Fields"); Pauline Woo Tsui, OCAW founding president; T. L. Tsui (posthumous).

NEWS IN BRIEF

A Misplaced Decimal at Fault, Admits Lloyd Hara

SEATTLE—Lloyd Hara, city treasurer, misplaced a decimal in his accounting that overestimated by more than a half-million dollars the amount of interest lost to the city because of the court's tardy deposit, but that was happily amended in a late August revise that showed the actual amount lost was around \$25,000—not the estimated \$700,000. Hara explained he had hurriedly figured the interest in response to a newspaper query and did not have time to check. He later said he probably should have used a calculator. Meanwhile, the Washington Finance Officers Association said he was received the organization's highest award.

Central Coast Chapters to Honor George Kondo

CARMEL VALLEY, Calif.—The four JACL chapters in the "central coast" region of California—Gilroy, Monterey County, Salinas and Watsonville—will honor George Kondo at Rancho Cañada Golf Club on Friday, Sept. 21, 6 p.m., it was announced by Rick West, general chairman.

Kondo, who recently retired after 15 years as Northern California-Western Nevada-Pacific regional director, is being publicly thanked for his services to the community. He plans to retire in Pennsylvania next spring.

Canal High School Alumni, Classes to Gather in SFO

SAN FRANCISCO—Nearly 300 Gila River Canal High School alumni, students (classes '43 to '49) and their spouses will gather over the Oct. 26-28 weekend to socialize and reminisce at the S.F. Airport Westin Hotel.

Muts Hada and Kay Ihara, hospitality chair, said all drop-ins can meet and munch at the reunion hospitality room both Friday and Saturday.

Golf tournament trophies will be awarded at the Saturday banquet. Besides scores of door prizes, there will be photo sessions by classes and dancing. Info: George Tamori (415) 685-4360 or Jiro Fujii (415) 232-8154.

PANA to Collect Clothing, Relief Items to Help President Fujimori's People in Peru

By Harry K. Honda

LOS ANGELES—Nine drop areas in the Southland area were designated this past week by the Pan American Nikkei Association for clothing, school supplies, towels, sheets, children's wear, toys, relief items and food to be shipped to the people in Peru.

Monetary contributions, payable to "PANA-USA," will also be acknowledged.

The campaign to show PANA's support for President Alberto Fujimori for a change in his country began after Noritoshi Kanai, PANA-USA president, and a group of local Nikkei residents had returned from Fujimori's inaugural in late July.

At a PANA meeting on the Fujimori inaugural, George Yusa, manager of the Tokyo Golf Club in Little Tokyo, who organized a similar effort to help earthquake victims in Mexico City, volunteered to help organize a campaign to gather old clothes and relief items for Peru.

Whatever has been collected by the end of this October will be bundled and made ready for shipment in a container and shipped by boat to Peru, Yusa explained.

Augusto Ikemiyashiro, president of the Japanese Peruvian Association, in Los Angeles this past week after visiting Japan last month, hailed the effort and said he would inform President Fujimori of PANA's concerns.

A PANA reception-dinner for Ikemiyashiro was held Sept. 4 at the Akasaka Hanten. Speaking in Spanish (with translations into English by Martha Tamashiro and into Japanese by Miki Yamazaki), he acknowledged the PANA-USA's support and related the Japanese Peruvian community is in earnest support of the new president, although many Nikkei leaders at first were concerned of a possible anti-Japanese political backlash and spoiling of their hard-won reputation.

Commenting on the Fujimori phenomenon, Fred I. Wada, honorary PANA-USA chairman, said the Peruvians who voted for Fujimori strongly believe the Japanese are the most capable people in the world today. Wada called on the Japanese around the world to offer the utmost help to these people who are suffering from poverty.

Jonathan Sanchez, local Peruvian businessman and leader in the Cambio-90 (Fujimori's political party), said the need in Peru is for technological and material assistance in mining, agriculture, fishery and small business. Some may want to help through the U.S. Peace Corps.

Kanai announced separate fundraising activities are being organized through (1) exhibition of Inca treasures in Japan, (2) individual and corporate contributions, (3) community chest, (4) clothing & relief items, (5) charity golf, (6) liaison, and (7) public relations.

The nine drop areas for clothing and relief items—with prospects of more sites being announced—are:

Downtown L.A.—Tokyo Golf Club, 219 S. San Pedro St. Suite B, Los Angeles 90012, (213) 617-8517 (a large parking area fronts this office building);

Yaohan-Los Angeles, 333 S. Alameda; Orange County—Yaohan-Costa Mesa, 605 Paularino Ave., Costa Mesa 92626;

East Los Angeles—Tozai Food Market, 1326 Portrero Grande Blvd., South San Gabriel 91770;

West L.A.—Granada Market, 1820 Sawtelle Blvd.;

San Fernando Valley—Garendo Gallery, 12955 Ventura Blvd., Studio City;

Gardena—Pacific (formerly New Meiji) Supermarket; and

San Diego—Nijiya Market, 3860 Convo, (619) 268-3821.

Tell The Advertiser Where You Saw Their Ads

CHIYO'S

JAPANESE BUNKA NEEDLECRAFT Framing, Bunka Kits, Lessons, Gifts
2943 West Ball Road,
Anaheim, CA 92804 ■ (714) 995-2432

No. 2,589

Allow 6 weeks to report Address Change with label on front page

IF YOU ARE MOVING / WISH TO SUBSCRIBE

Effective Date: _____

Please send the Pacific Citizen for:

1-Yr: \$25 2-Yrs: \$48 3-Yrs: \$71

TO-Name: _____

Address: _____

City, State ZIP: _____

All subscriptions payable in advance. Foreign: US\$13.00 extra per year. Checks payable to: Pacific Citizen, 941 E. 3rd St., Los Angeles, CA 90013

EXPIRATION NOTICE: If the last four digits on the top line of address label reads 0790, the 60-day grace period ends with the last issue for September, 1990. If JACL membership has been renewed and the paper stops, please notify the P.C. Circulation Office immediately.

SEP 90: TN443.crt29

Nikkei Doctors, Nurses of Internment Camp Days to Be Remembered at L.A. Gala

LOS ANGELES—The Japanese Community Health, Inc., is remembering the Issei and Nisei medical professionals who ministered in the WWII internment camps at its Oct. 6 banquet at the Biltmore Hotel in honoring Nisei pioneers — James M. Goto M.D., George Kambara M.D., Robert Obi M.D. and Yone Akita R.N.

Ticket information and reservations for the second annual JCHI recognition dinner may be made through dinner chair Toshi Yamamoto, (213) 626-6071 or the JCHI 620-0160.

Yone Akita, who is 93, was the first Nisei to be credentialed in 1920 as a nurse by the state. She briefly served as nurse supervisor at the Japanese Hospital and worked in surgery at the

Cedars of Lebanon from 1935 except for 3½ years at Manzanar. She retired in 1971. Her father was one of the first Little Tokyo residents, having settled in 1890.

Dr. Goto, 79, was the first Nisei in 1932 to enter USC medical school and completed his residency prewar in surgery and pathology at L.A. County General Hospital. He and his doctor-wife Dr. Masako Kusayanagi were part of the five-doctor team to establish the hospital at Manzanar and they were later transferred to Topaz WRA Center hospital. He opened his office after the war in Little Tokyo and financed the Nisei weekly, *Crossroads*.

Dr. Kambara, 74, and his wife Mary, a registered nurse, spent their Evacuation years at Tule Lake. A graduate of Stanford medical school, he completed his residency at Memphis in eye-ear-nose-throat and later in ophthalmology at the University of Wisconsin. They moved to Los Angeles in 1948 and he just retired from practice after 42 years.

Dr. Obi, 72, was third-year pre-med student at USC when WWII broke out and worked as an extern at Santa Anita Assembly Center and in various capacities at Amache WRA Center. He earned his medical degree in 1948 at Wayne State University, Detroit, completed his residency in anesthesiology at L.A. County General. He retired in 1985 after being associated with the Japanese Hospital for 35 years.

Dr. Obi is director at JCHI, which opened its new quarters at 420 E. 3rd St., Suite 607.

Dinner-Dance to Boost JACL Scholarship Trust

LOS ANGELES—Downtown L.A. JACL dinner-dance to raise funds for its scholarship trust will be held Oct. 12 at the Grace Simons Lodge, it was announced by Sandra Kawasaki, dinner co-chair.

The JACL trust was established five years ago to assist young graduates of Ninth Street Elementary School, an inner-city school in the midst of crime, drugs and gang-violence. The chapter, which had been servicing its own Nikkei community for 55 years, became involved with Ninth Street School through its chapter president Kitty Sankey.

Contributions to the trust fund should be sent to Downtown L.A. JACL, P.O. Box 189, Monterey Park, CA 91754; or call (818) 284-7042.

ALOHA PLUMBING

Lic. #440840
—SINCE 1922—
777 Junipero Serra Dr.,
San Gabriel, CA 91776
(818) 284-2845 (213) 283-0018

ESTABLISHED 1936

Nisei Trading

Appliances - TV - Furniture
FURNITURE SHOWCASE
2975 Wilshire Blvd., Los Angeles
(213) 383-4100
WAREHOUSE SHOWROOM
612 Jackson St., Los Angeles, CA 90012
(213) 620-0882

OUR NEW CARD

12.9% APR

National JACL Credit Union

VISA

No ANNUAL FEE / 25 DAY GRACE PERIOD

Please send a Visa Card Application and Nat'l JACL Credit Union membership information. For National JACL Credit Union members only.

Name _____

Address _____

City/State/ZIP _____

Nat'l JACL Credit Union

PO Box 1721 / Salt Lake City, Utah 84110 / 801 355-8040
Toll Free 800 544-8828 Outside of Utah

FOREIGN THEATRICAL CONTROLLER

(Japan)

For more than 50 years, Warner Bros. has earned an international reputation for its contributions to the film & entertainment industry. To continue our momentum in Japan, we seek your expertise and bilingual ability. This is an outstanding opportunity for an individual seeking to return to Japan.

The successful candidate will direct the international accounting functions, monitor foreign bank balances, project cash requirements, review financial statements and develop/implement financial control systems. You will also consult with management regarding accounting activities & operations.

To qualify, you must speak & write Japanese fluently, have a BS in Accounting and at least 3-4 years accounting experience (1-2 years experience with CPA certification is preferred). One year supervisory background is desirable and computer literacy (Lotus 1-2-3) is essential.

As a leader in our industry, we can offer the right individual a superb career opportunity, complete with a competitive salary & benefits package. For immediate consideration, please send or FAX your resume with salary history to:

Warner Bros.
Human Resources Dept. Box #4
4000 Warner Blvd.
Burbank, CA 91522
FAX: (818) 954-4265

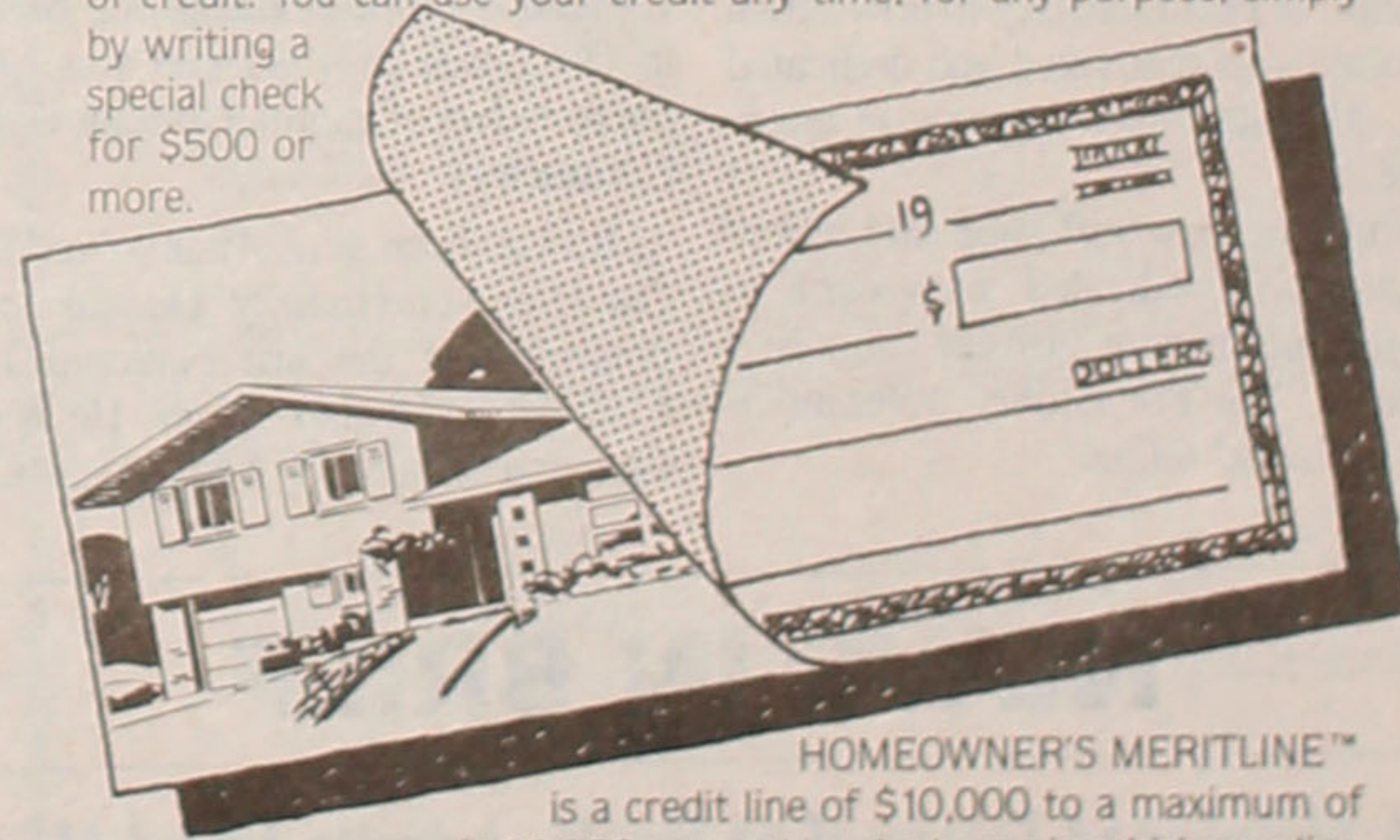
For other outstanding career opportunities, call the Warner Bros. Job Hotline: (213) 337-4914.



equal opportunity employer

Union Bank HOMEOWNER'S MERITLINE™

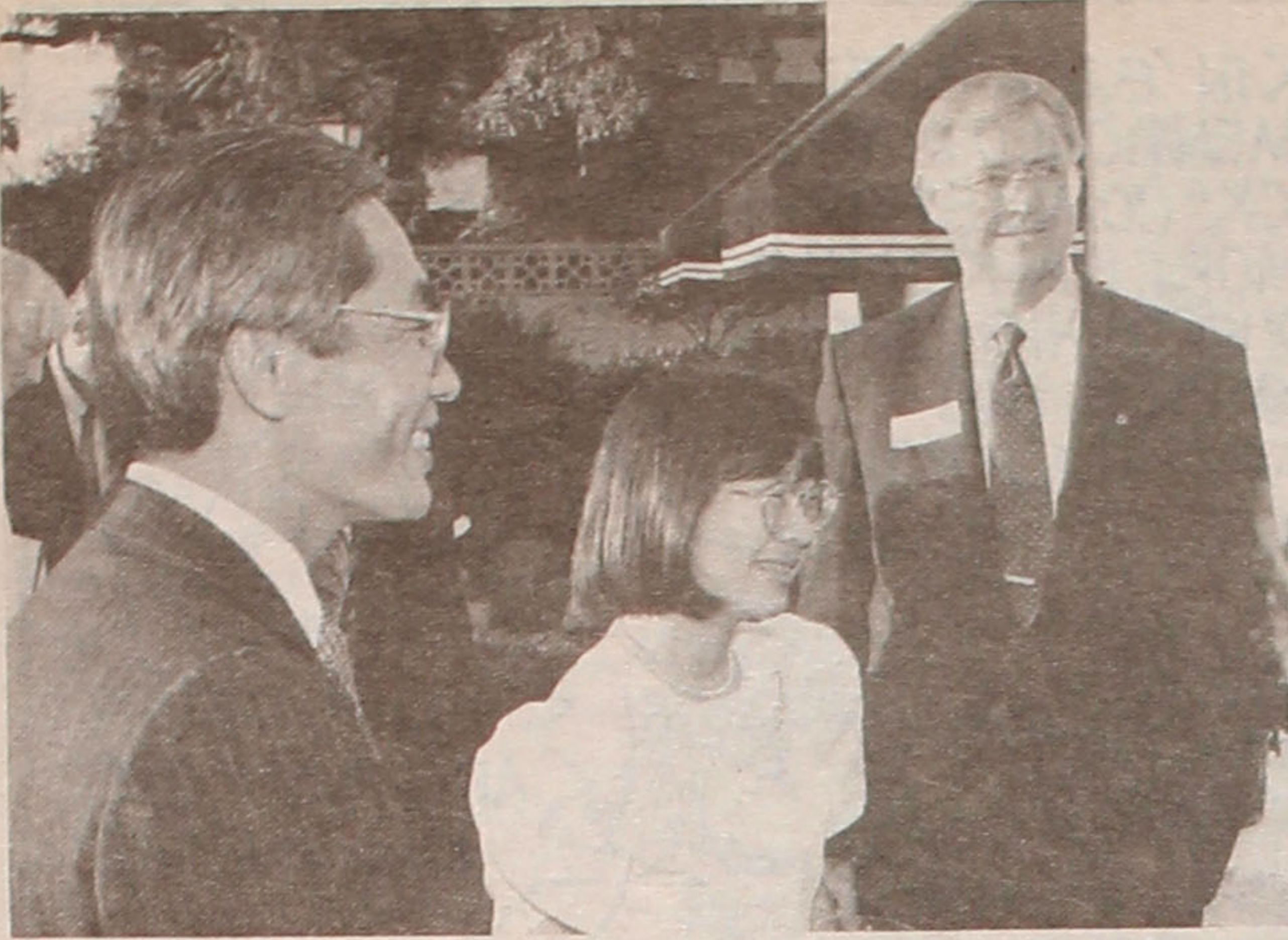
Get the credit you deserve. Union Bank has a new way to provide you with a pre-approved line of credit. You can use your credit any time, for any purpose, simply by writing a special check for \$500 or more.



HOMEOWNER'S MERITLINE™ is a credit line of \$10,000 to a maximum of \$100,000 secured by the home in which you live. Your monthly payment will be only the finance charge for the billing period or \$100, whichever is greater. The finance charge is 2% above the Wall Street Journal prime rate.



Union Bank Member FDIC



PRINCESS SAYAKO OF JAPAN visited Los Angeles during Nisei Week on her first trip to the United States. The only daughter of Emperor Akihito and Empress Michiko, she shares laugh with Los Angeles County Supervisor Mike Antonovich (right) and Consul General of Japan Kiyohiko Arafune during reception at the Consul General's home.

ORA Case Flow for the First 30,000: What's in Your File and Where It Goes

[The fourth in a series of five articles by and about the Office of Redress Administration.]

WASHINGTON — Nearly 30,000 case files have been created by the Office of Redress Administration to date. Each one contains information about an individual who is potentially eligible to receive \$20,000 in redress.

If you are a Japanese American who was evacuated or interned during World War II, and you are approximately 70 years of age or older, the chances are very good that one of those 30,000 case files has your name on it.

Most of those younger than 69 years of age have not had case files created for them yet. All information about them that ORA has received through telephone and correspondence contacts has been filed alphabetically in a separate set of temporary files, to be retrieved when ORA begins processing their age group.

22,500 Cases Verified and Ready

Most of these 30,000 cases, about 22,500 of them, have completed a verification process and are ready for payment. They are filed in date of birth order in 54 file cabinets, just one set out of the 367 file cabinets in ORA's file "Library." Another set of cabinets contains the files of ineligible, and another set contains the temporary files of those yet to be processed—the biggest group of all and a constant reminder to ORA staff of how much work there is yet to be done.

The library itself is quiet, but in offices all around it there is a hubbub of activity. If you stop for a moment to see what is at the center of each and every ORA staffer's private tornado of activity, you will see the same thing: a pile of case folders. They are everywhere, piled on every desk, on tables, on shelves, and in file cabinets.

If 22,500 are safely filed away in the library, that leaves another 7,500 to be accounted for. About 4,000 of them are somewhere in ORA's processing pipeline, in one of those active piles moving across someone's desk. The other 3,500 are in hold files, awaiting action from the individual whose name on the file folder itself.

A Typical File Described

As an example, Fumiko's case file is one

of those finished processing and now filed in the library awaiting payment. Hers is an average case. It contains 15 sheets of paper. (Multiply that times 30,000 and you get 450,000. ORA goes through about 20,000 sheets of plain white paper weekly.)

Leafing through the right-hand side of the case folder, an observer can follow the path of Fumiko's case through the stages of Phase I of verification, through case assignment, research, initial recommendation, data entry, and review. This side of the file folder reveals the factual basis for an eligibility determination, the source of the current address that ORA is using, what was mailed out to Fumiko, and when, and a summary of any additional correspondence with her.

The bottom pages on this right side have a computer printout of historic records, computerized by ORA in just the last year, that show that Fumiko was interned, and where. Depending on what records are available for an individual, ORA usually has available a range of information from 1942 through 1946 that includes full date of birth, names of family members, occupation, pre-evacuation address, post-internment destination, ancestry, citizenship status, marital status, and education level.

The Case File Folder

Not all of this information is needed to determine eligibility, however. The historic records contained in ORA's computers have been pared down to the minimum needed by the analyst for verification, and this is what is contained in the case file folder.

Once Fumiko's name and date of birth were assigned to a verification analyst, it took about 30 minutes to do the computer research, print out and attach records to her folder, fill in a data entry form, and prepare an initial eligibility recommendation. Her case file then went to a data entry clerk, who entered into a computer Fumiko's initial eligibility recommendation, and her current address. The computer tracks all correspondence with potential eligibles, and serves as a resource for checking case status. The clerk also prepares a verification packet to be mailed to the potential eligible.

From there, Fumiko's file folder went to the desk of an ORA manager for review immediately prior to mailing of the verification packet. At each stage, the actions taken are recorded in the pages on the right side of the folder. These stages of verification, from initial eligibility determination to

Continued on Page 5

For the Record:

Reject ACR 181

(Here's the text of Los Angeles Mayor Tom Bradley's letter to Assemblyman Tom Bane of the Rules Committee and fellow committee members on ACR 181—which was roundly defeated 60-4 the final week of this year's session in Sacramento.)

I am writing to urge that you reject, outright, ACR 181. This thinly veiled attempt to recast the history of the tragic wartime internment of Americans of Japanese ancestry is simply untenable. Moreover, the propositions outlined in the text are not supported by any credible documentation whatsoever.

The only reference that the Bill's author, Gil Ferguson (Assem. R-70), cites is "historian" Lillian Baker. Those of us who have been on the forefront of seeking redress for this most regrettable episode in American history are very familiar with Ms. Baker. She fought us and lost when we sought both State and Federal historic landmark designation of Manzanar. She lobbied long and hard with the Congressional Commission on Wartime Relocation and Internment of Civilians with her invective opinions—all of which are summarily dismissed in its Final Report. Therefore, it is unnecessary for me to refute these preposterous propositions at this time.

So you can see, Ms. Baker "struck-out" three times before; but now she has, apparently, found a sympathetic ear in Assemblyman Ferguson. Ferguson is now waving the banner for this revisionist approach to the wartime relocation and detention experience—I am confident that he will attract few followers.

As a young man, I personally witnessed my many friends and neighbors—fellow Americans who happened to be of Japanese descent—evacuated from their homes, without due process. For Ferguson to suggest that, "(I)t is simply untrue that Japanese-Americans were interned in concentration camps during World War II..." boggles the mind. In fact, it brings to mind the truism that a society which fails to remember its past is condemned to repeat it. Although I do not believe that internment would be a serious option today, proposals like ACR 181 give me cause for concern.

Ferguson and his ilk really miss the point. What is so very special about America is that we, as a nation, are uniquely willing to admit and recompense for governmental wrongdoings. During difficult times in our past, Constitutional safeguards were, unfortunately, disregarded. We must resist pressures to erode the Constitutional protections guaranteed all residents.

The United States of America is strengthened by its reaffirmation of the democratic principles upon which it was founded—and the State of California, is likewise strengthened by its rejection of wholly un-American efforts to rewrite or blot-out ugly periods in our nation's past.

TOM BRADLEY
Mayor

New Singles Group

A new Southern California Nikkei group called the Orange County Widows/Widowers is in the process of being organized. For information, call Aya Otsu (714) 262-0270 or Tosh Iwata (714) 778-1035.

Commercial & Industrial
Air-Conditioning and Refrigeration
Contractor

Glen T. Umemoto

Lic. No. 441272 C38-20
SAM REIBOW CO., 1506 W. Vernon
Los Angeles - 295-5204 - Since 1939

Carat
& Karat



Japanese Charms
Japanese Names
Japanese Family Crests

12258 Valley View
Garden Grove, CA
92645 - (714) 895-4554

Farewell Party Held for Mark Tanouye Family, Moving to Berkeley

By Alvina Lew

ALTADENA, Calif. — Another chapter of the "Mark Tanouye for Tenure at Cal Tech" is being written. A farewell pot luck luncheon was held at the First Presbyterian Church of Altadena where Dr. Mark Tanouye, his wife Ellen and family have been actively involved the past seven years.

On Sunday, Aug. 26, about 200 members and friends came to wish the Tanouyes well at his new post at UC Berkeley.

This is not the last chapter of the Tanouye story, he said, "I have accepted a position to teach at UC Berkeley and all indications that at the end of a year, I will receive tenure there."

Craig Higa, JACL representative, gave an update on Tanouye's position. "He is not putting aside his pursuit of tenure at Cal Tech which has been denied him on three different applications since 1989. In June of this year, Mark filed a complaint against Cal Tech on discriminatory employment practices with State Fair Employment Housing Commission which is now investigating his case."

Tanouye's contention is that the tenure board and President Thomas Everhart of Cal Tech overlooked his record of performance which excelled many who were given previous tenure status.

Mark had another consideration for accepting a position at UC at this time, saying, "Ellen's father passed away in April of this year at San Mateo. Ellen grew up there. We want to help her mother during this period. We are also looking forward to be involved in Ellen's family church."

Los Angeles Japanese Casualty Insurance Assn.

COMPLETE INSURANCE PROTECTION

Aihara Insurance Agy. Inc.
250 E. 1st St., Los Angeles 90012
Suite 700 626-9625

Anson T. Fujioka Insurance
321 E. 2nd St., Los Angeles 90012
Suite 500 626-4393

Funakoshi Ins. Agency, Inc.
200 S. San Pedro, Los Angeles 90012
Suite 300 626-5275

Ito Insurance Agency, Inc.
Howe Bldg. 180 S. Lake Ave., #215, Pasadena, 91101
(818) 795-7059, (213) 681-4411 L.A.

Kagawa Insurance Agency Inc.
360 E. 2nd St., Los Angeles 90012
Suite 302 628-1800

Kamiya Ins. Agency, Inc.
120 S. San Pedro, Los Angeles 90012
Suite 410 626-8135

The J. Morey Company, Inc.
11080 Artesia Bl, Suite F, Cerritos, CA 90701
(213)924-3494/(714)952-2154/(408)280-5551

Steve Nakaji Insurance
11954 Washington Pl.
Los Angeles 90066 391-5931

Ogino-Aizumi Ins. Agency
1818 W. Beverly Bl, Montebello, 90640
Suite 210 (818)571-6911/(213)728-7488 L.A.

Ota Insurance Agency
321 E. 2nd St., Los Angeles, CA 90012
Suite 604 617-2057

**T. Roy Iwami & Associates
Quality Ins. Services, Inc.**
3255 Wilshire Blvd., Los Angeles 90010
Suite 630 382-2255

Sato Insurance Agency
366 E. 1st St., Los Angeles 90012
626-5861 629-1425

Tsuneishi Ins. Agency, Inc.
327 E. 2nd St., Los Angeles 90012
Suite 221 628-1365

AHT Insurance Assoc., Inc.
dba: Wada Asato Associates, Inc.
16500 S. Western Ave, Gardena, CA 90247
Suite 200 (213) 516-0110

Available Exclusively To JACL
Individual Members And Group

The JACL-BLUE SHIELD Health Plan



Quality Blue Shield Coverage
At Special Rates For JACL Members

- Your Choice Of Doctors And Hospitals
- Wide Range Of Benefits Including Professional Services, Hospitalization, And Dental Coverage
- Includes HEALTHTRACSM — a personal wellness program to help keep you healthy
- Over 36,000 Physician Members To Help You Save On Out-Of-Pocket Expenses
- Up To \$2,000,000 in Lifetime Maximum Benefits
- Worldwide Coverage
- A JACL Endorsed Health Plan Backed by Nearly 50 Years Of Blue Shield Experience

JACL members 18 and over may apply to enroll in the Blue Shield of California Group Health Plan sponsored by JACL. Applicants and dependents under age 65 must submit a statement of health acceptable to Blue Shield before coverage becomes effective. Members age 65 and over, covered under Medicare parts A and B, may join without a health statement.

For More Information, Write Or Call Today:
(415) 931-6633

Yes! I want to learn more about the JACL-Blue Shield of California Group Health Plan.

- I am a member of _____ chapter.
- I am not a member of JACL. Please send me membership information. I understand that JACL membership is required to obtain this coverage.

Name _____ Age _____
Address _____
City/State/Zip _____
Phone (____) _____ Work Home

Send To: Frances Morioka, Administrator
JACL-Blue Shield of California Group Health Trust

1765 Sutter Street, San Francisco, California 94115

pacific citizen

941 E. 3rd St., Rm. 200,
Los Angeles, CA 90013-1896
(213) 626-6936, Fax: 626-8213,
Editorial: 626-3004
Circulation: 626-0047

EDITORIAL - BUSINESS STAFF:
Editor-in-Chief: Mark S. Osaki
Business Manager: Mark T. Saito
Senior Editor: Harry K. Honda
Business: Andy Enomoto, Jennifer Choe
Subscription/Circulation:
Tomi Hoshizaki, Marjorie Ishii
Production: Mary Imon, Frank M. Imon

NEWS / AD DEADLINE
Friday Before Date of Issue

SUPPORT
P.C. ADVERTISERS



DELIGHTFUL
seafood treats
DELICIOUS and
so easy to prepare

MRS. FRIDAY'S

Gourmet Breaded Shrimps and Fish Fillets

Fishing Processors, 1327 E. 15th St. Los Angeles. (213) 746-1307

THE PACIFIC CITIZEN

(ISSN: 0030-8579)
 941 E. 3rd St., #200, Los Angeles, CA 90013-1896
 (213) 626-6936, Fax: 626-8213, Editorial: 626-3004

The Pacific Citizen is published by the Japanese American Citizens League, 941 E. 3rd St., #200, Los Angeles, CA 90013-1896, weekly except the first week of the year, biweekly during July and August, and semi-monthly in December. ■ Annual Subscription Rates — JACL Members: \$12.00 of the national dues provide one year on a one-per-household basis. Non-Members: 1 year — \$25, 2 years — \$48, payable in advance. Additional postage per year—Foreign: US\$13. Air mail—U.S., Canada, Mexico: US\$30; Japan/Europe: US\$60.

National Headquarters, 1765 Sutter St., San Francisco, CA 94115, (415) 921-5225

The news and opinions expressed by columnists other than the National President or National Director do not necessarily reflect JACL policy.

Second Class Postage Paid at Los Angeles, Calif.

POSTMASTER: Send Address Change to Pacific Citizen, 941 E. 3rd St., #200, Los Angeles, CA 90013-1896

EDITORIAL OF THE PACIFIC CITIZEN

Golf

This past summer the all-white membership of some of the most exclusive country clubs of America came in for considerable newspaper attention. A controversy exploded when the Professional Golfers Association threatened to pull its PGA Championship tournament from the whites-only Shoal Creek Country Club in Birmingham, Ala.

The furor ended, for the time being, when Shoal Creek promised to invite blacks to join. Whether any would want to, or could afford to, was another matter.

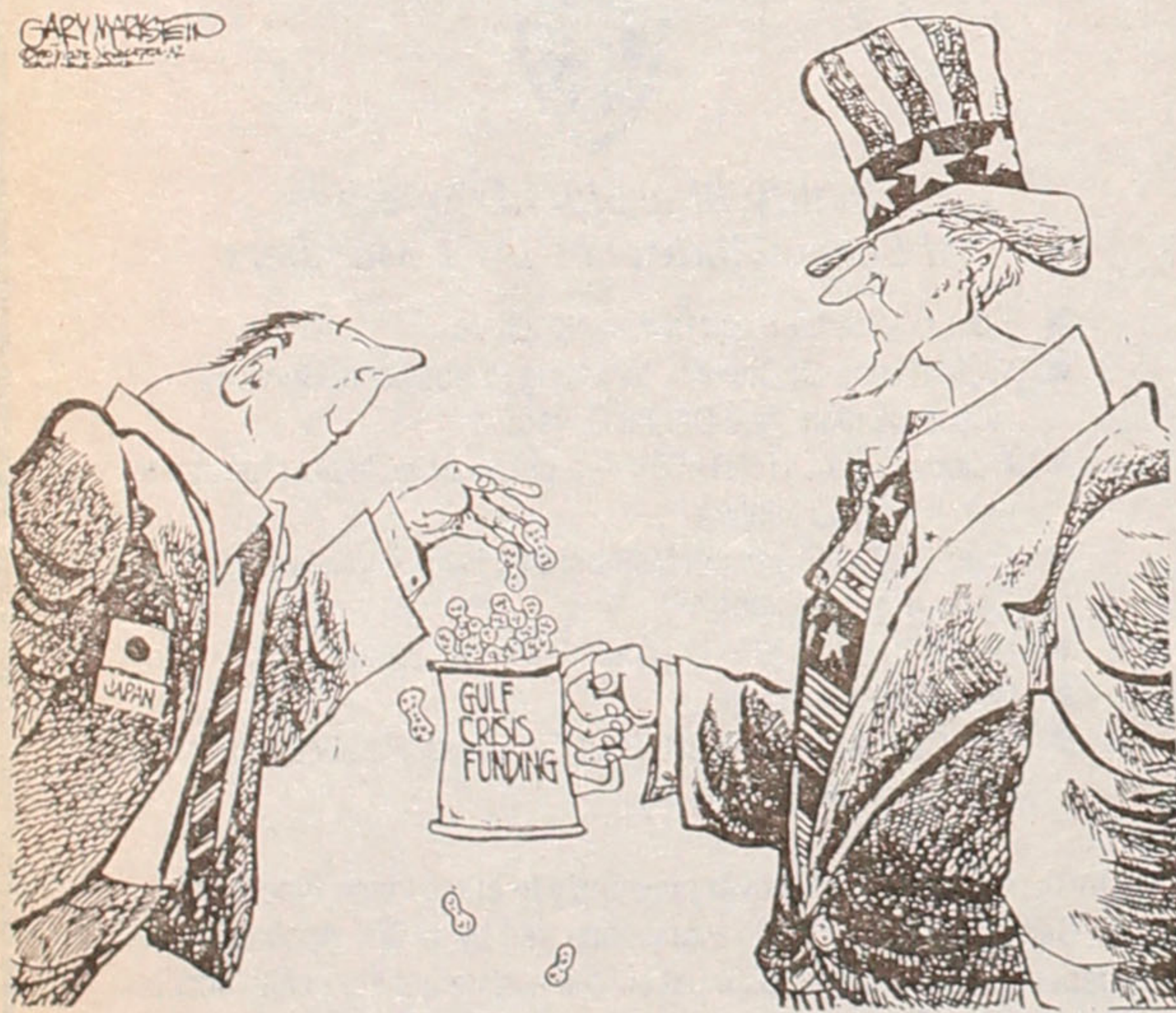
Enterprising newspapers around the country began to look into the membership policies of posh clubs in their areas. Many admitted they had no minority members and most of them promised to do something about it. At the same time, an encouraging number of other clubs said they had no racially discriminatory policy.

All this might be of some passing interest to this newspaper, but the comments of the general manager of a suburban Denver club made the issue quite pertinent. The manager of the Columbine Country Club, John Kauffmann, told the Rocky Mountain News that although no blacks had applied, the membership included Hispanics and Jews. And, he went on: "We have Asians—even a gentleman who was interned in one of the camps in Colorado."

We had never understood that unjustified confinement in an American concentration camp was grounds for denial of country club membership, and are pleased that Mr. Kauffmann concurs.

And we must thank him for reminding us that much, much needs to be done in the way of educating all Americans about that great travesty which resulted in the mass imprisonment of Japanese Americans during World War II.

MONITOR



—Gary Marvstein. Tribune Newspapers-AZ [9-16-90].

Readers wishing to send items to the Monitor should address their submissions to the P.C. Editor.

LETTERS TO THE EDITOR

Airborne Heroes

Washington, D.C. was the site of the 50th anniversary of the founding of the U.S. Army Parachute troops on July 4. It was also the occasion for two Nisei paratroopers, George Kojima and Harry Akune, both of Gardena, California, to be awarded American flags by their wartime commander, General George M. Jones, now of Phoenix, Arizona, on behalf of the 3,000 members of the 503d Parachute Regimental Combat Team.

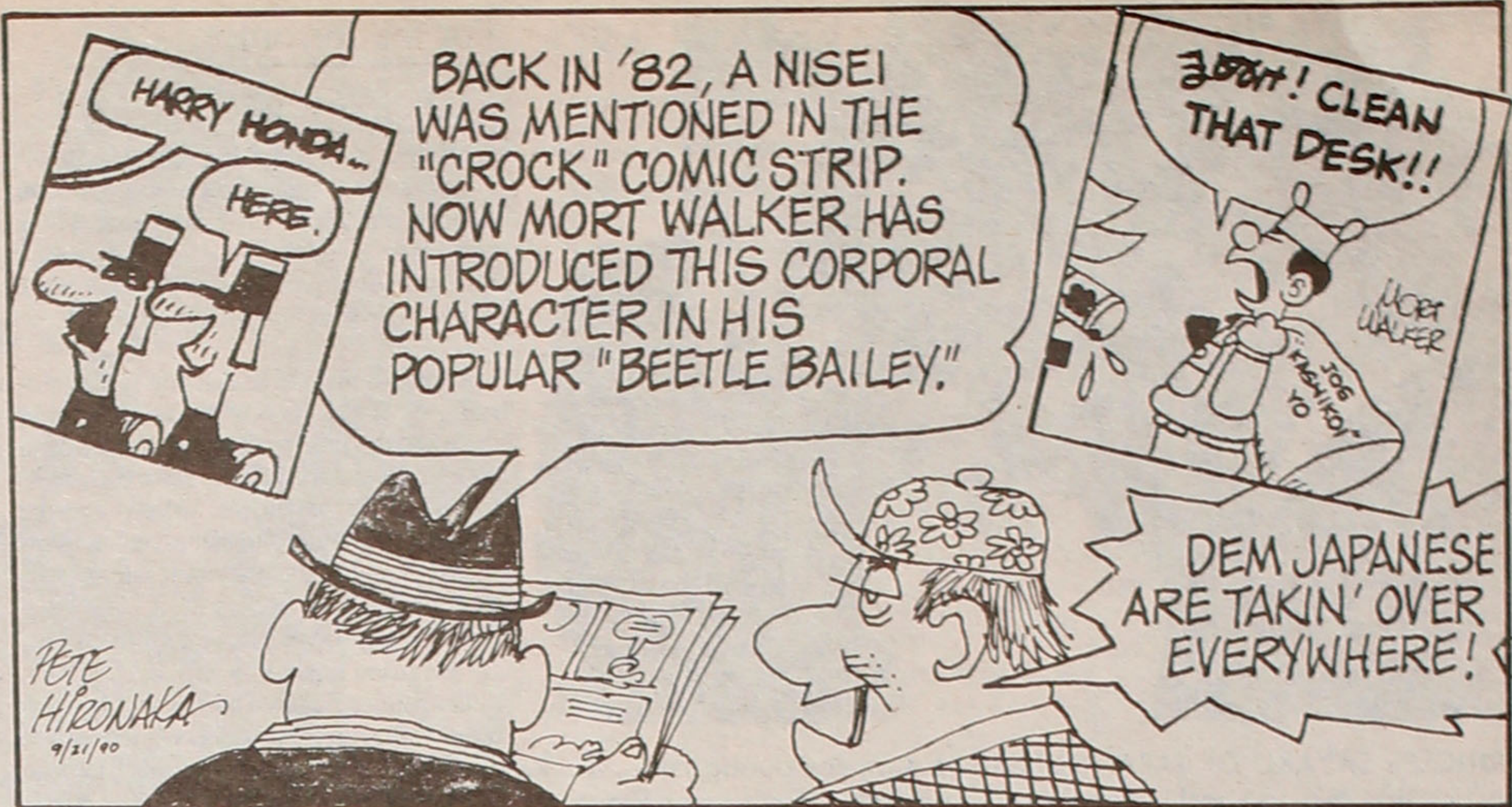
In a letter to Kojima, Gen. Jones noted that George had volunteered from a War Relocation Authority camp to join parachute forces and subsequently suffered severe wounds in the Philippines. Despite being wheelchair-bound, Kojima has re-

joined his wartime soldiers-in-arms at many reunions, where he is always welcomed with high regard and affection.

Harry Akune's volunteering to make his first parachute jump on the island fortress of Corregidor in February 1945, was cited by the General as a "brave" act, and Harry's skill in obtaining intelligence from enemy prisoners and documents "saved lives and shortened hostilities." Akune had volunteered to join the paratroopers, even though he was not trained for such hazardous duty.

General Jones added that both Kojima and Akune enjoy a status of respect and moving sentiment shared by all paratroopers.

JACK HERTZIG
 Falls Church, Va.



FROM THE FRYING PAN

BILL HOSOKAWA

He Can Become a Sushi-Maker

Last summer, our No. 1 son Mike left the heat and humidity of his Missouri home to spend a few days with us in Denver which, to be frank, wasn't much more comfortable.

Usually these visits are an occasion for piggin' out on Mom's cooking. Of course there was plenty of this kind of activity. That's an important part of going home to visit the folks, isn't it? There is something very appealing about returning to the kind of food one enjoyed in childhood, especially during the growing years when appetites were awesome, and the memories seldom fade.

Mike devoted most of the afternoon to cutting and cooking and mixing and tasting and shaping. Unfortunately I had to leave for a meeting before the feast was ready. When I returned, I discovered to my relief that the others had thoughtfully saved some of the goodies for me.

* * *

But this time there was something

different. Mike announced that on one night during his visit he would prepare the entire dinner.

Oh? What would it be? Deep-fried catfish? Black-eyed peas, hog jowls and turnip greens, or whatever it is that they consider a delicacy in Missouri?

"Oh, no, no," Mike protested. "Nothing like that. What I'm going to prepare for you-all is sushi."

There were doubtful looks around the table. What did this American-born, Denver-reared, Missouri-resident Sansei know about making sushi? Mike just smiled.

Next day he and his wife Betty went down to the markets in Sakura Square. Delighted by the abundance and variety of sushi-making ingredients available, they spent a small fortune on fish and shrimp and condiments and a lot of odd-smelling things in bottles and little paper boxes.

Well, I must admit that I've had better sushi as a guest in some of the fanciest sushi houses in Tokyo. But what

Mike had whomped up was as good, if not better, than anything I've had on this side of the ocean and just as pretty.

"Where, when and how," I asked in amazement, "did you learn to make sushi?"

"It's not hard," Mike said. "A big part of sushi is getting the flavor right and there's a lot of stuff in bottles that eliminates the guess-work."

"Yes, but the rest of it."

"That didn't come cheap," Mike said. "I learned by watching Japanese sushi chefs in St. Louis. I'd sit there watching and eating and eating and watching. By the time I spent most of my money I had a pretty good idea what the chef was doing and how he was doing it. After that, it was just a matter of going home and practicing."

If and when Mike decides he's had enough of teaching, and he learns to speak a little Japanese, he probably could get a job behind somebody's sushi bar. His family would be happy to recommend him.

EAST WIND

BILL MARUTANI

The Nikkei in Politics



RECENTLY RECEIVED news items from two different sources, one from a Peruvian American college professor and the other from a Chinese American lawyer, taken from two publications, "In These Times" (June-July 1990) and "Asian Week" (July 13, 1990). Coincidentally, both news items related to *nikkei* (Japanese lineage) in politics: (alphabetically) President Alberto Fujimori of Peru, Congressman Robert T. Matsui and Norman Y. Mineta.

THE PERUVIAN ARTICLE, dated "Lima, Peru" reports that when candidate Fujimori appeared at his polling place, he was met by a hostile crowd of teenagers wearing T-shirts with U.S. university names thereon, and middle-aged women holding German Shepherd dogs. The article reports that the crowd shouted "Japanese back to Japan!" with cries of "We want a president that is 100 percent Peruvian!" As we now know, none of this stopped Mr. Fujimori from attaining the presidency. The article pointed out that candidate Fujimori, woefully underfunded as compared to his major opponent, turned disadvantages into advantages. For example, his ethnicity provided a basis for closer relationship with the *campesinos* who supported him.

Paradoxically, the article concluded that the *nikkei*, of whom there are some 50,000, fearing a right-wing backlash,

"kept their distance" from supporting candidate Fujimori. As one restaurateur explained: "If the Fujimori presidency doesn't work out, they'll take it out on us."

AS FOR NIKKEI in politics in our U.S., both Congressmen Mineta and Matsui were prominently featured in an article highlighting rising political stars among Asian Americans. Congressman Matsui started his political

career almost 20 years ago as a member of the Sacramento City Council. Moving on to the national scene as a congressman more than a dozen years ago, Bob, among other things, is currently whip-at-large of the 101st Congress. The news article reported that Bob is seeking the U.S. Senate seat from California in 1992; according to a "political insider who asked not to be

Continued on Page 5

In The Pacific Citizen 45 Years Ago

Four of the eight articles covered in the Sept. 22 issue of the PC were mention of vandals and terrorists preying on the returning Japanese Americans:

LOOMIS, Calif.—Anti-evacuee terrorists burned the Placer county home of four Nisei servicemen. Mr. and Mrs. K. Sakamoto, parents of the four GIs, returned this week to find their home burned to the ground.

SAN FRANCISCO—Police guards were posted to maintain a watch around the Buddhist church, home to 150 recently returned evacuees.

OAKLAND—Two men were in custody following the daylight attack on two Japanese American homes near Centerville last week. Several rounds from a shotgun were fired into the homes of Toshiaki Idota and Motonoshin Motozaki in a daylight drive-by shooting.

LODI, Calif.—Officials continued their investigation of an attack on the farm home of Mrs. Kaharu Imada, whose son is serving with the 442nd RCT. The reported terrorism, the first act of violence against Japanese Americans in San Joaquin county last week when shots were fired into the home of the Issei woman.

Developers in Hawaii Under New Policy to Build

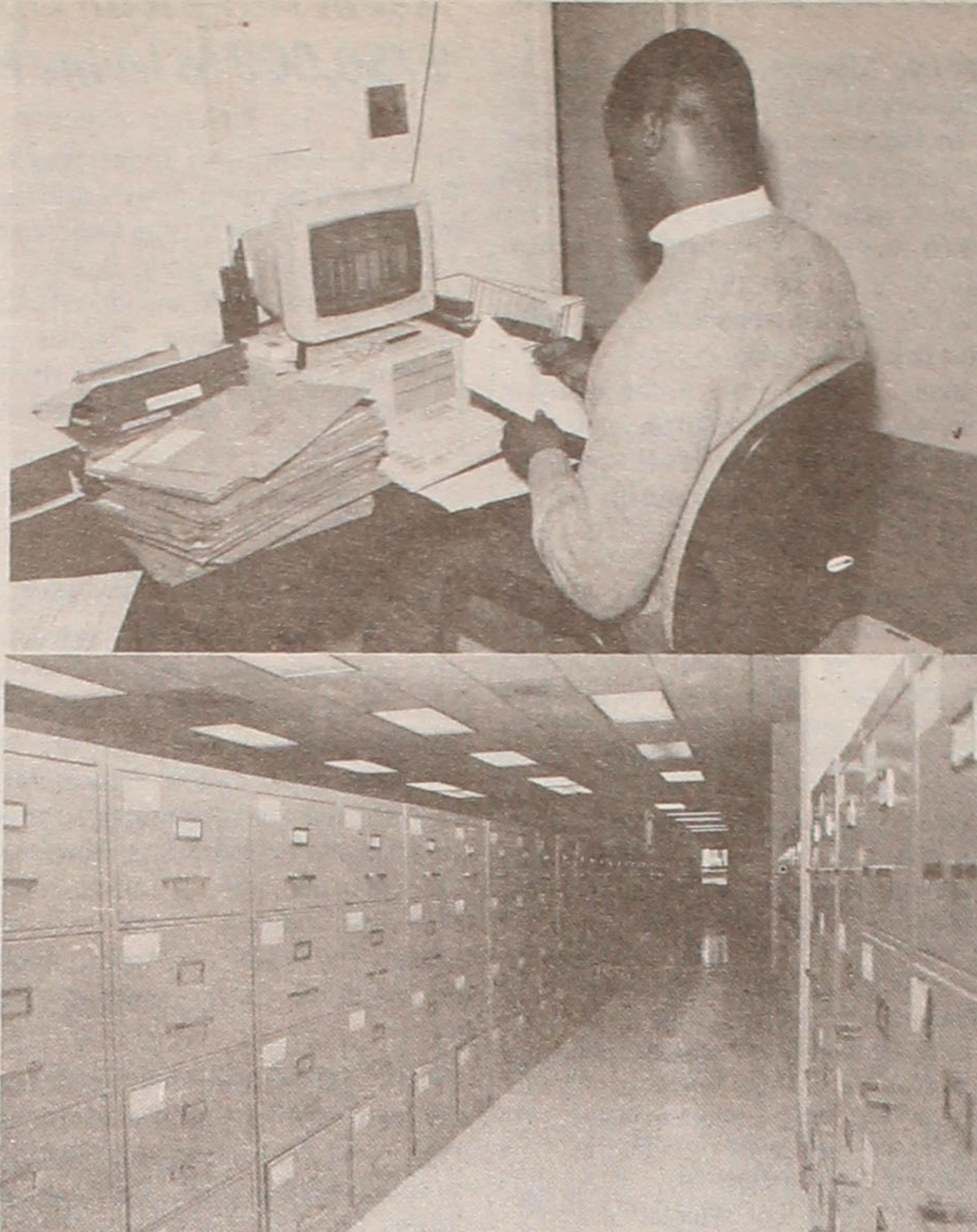
HONOLULU—The Japanese company, Haseko, proposing the Ewa Marina resort at Lanai City, has agreed with the state administration to provide 1,500 non-tourism jobs in exchange for resort zoning, it was announced Aug. 29 by the Office of Planning and Haseko Hawaii Co.

In his state-of-the-state message last January, Gov. John Waihee said he wanted to make it a state policy that resort developers provide non-tourism jobs as a means of diversifying the state's economy.

Haseko has offered \$38 million for new business loans that would create jobs.

2nd Annual JASEB Award Dinner Set for Oct. 20

OAKLAND, Calif.—Japanese American Services of the East Bay will hold its second annual appreciation awards dinner on Saturday, Oct. 20, 6 p.m., at the Oakland Airport Hilton with Ichiro Nishida as dinner chair. Being honored are Daruma no Gakko, Paul R. DeWitt, Union City Mayor Tom Kitayama, Joe Oishi and Yukio Wada. Tickets are \$50 per person with proceeds going to JASEB, 2126 Channing Way, Berkeley, CA 94704, (415) 848-3560.



(Top) An ORA staffer logs incoming mail into the case-tracking computer. (Bottom) A section of ORA's File Library.

ORA PROGRESS

Continued from Page 3

mailing of the verification packet, usually require about a week.

The 'Hold' File

The letter of potential eligibility informs the recipient that ORA believes that they are eligible for payment, and requests that they provide documents showing their full name, current address, and sometimes, date of birth and other information, so that ORA can confirm that they have identified and located the right person. The instructions explain what is needed and how to prepare and return the documents to ORA. Fumiko's folder was placed in a "hold" file until a response was received from her.

ORA received a return envelope from Fumiko two weeks later. The envelope came in along with 1,100 other pieces of mail received that week. ORA's volume of incoming mail peaked in March, April and May, 1990, after ORA had processed and mailed verification packets to the bulk of individuals who will be receiving payment this fall. During those months, ORA averaged 1,000-1,500 pieces of incoming mail weekly.

More recently, the weekly average has been around 500 pieces. The incoming verification responses are logged into the computer, and sent on to Phase II of the verification process.

In the first stage of Phase II, Fumiko's envelope was opened by an analyst, who reviewed the documents that

she had sent in to ORA. The analysts carefully review proof documents using a check list. If there are any problems, if the recipient has misunderstood ORA's instructions, sent an unacceptable document, or left something out, the analyst must recommend a re-mailing. In this case, the verification packet will go out to the individual again, but this time with additional special instructions explaining where the problem is and what is needed to correct it.

About 20% of all cases require at least one re-mail. For each mailing, a status sheet containing information about what was mailed, where it was mailed, and when it was mailed, is attached to the right hand side of the file folder. The computer must also be updated. Those having trouble can call the ORA Help Line for additional instructions. ORA often calls persons having repeated difficulty, instead of sending another letter.

Fumiko, like most, got it right the first time. The documents that she sent, along with the checklist completed by the proof document analyst, are now all attached to the left hand side of her case file folder. Cases that have completed these stages receive a final eligibility recommendation, and, if the individual is eligible, a final eligibility letter is prepared to be sent out.

The Final Review Stage

The eligible cases are sent to an ORA manager for final review. Cases receiving an ineligible recommendation all go to ORA's legal counsel for final review.

Fumiko's case was verified for payment and a letter of final eligibility sent out to her, within five weeks of the time that her name was first assigned to a verification analyst.

In 1998, ten years after the passage of the Civil Liberties Act, ORA will officially close its doors. The office's final closing will be marked by the transfer of all case files and all computer records compiled by ORA to the National Archives.

Then, perhaps in the year 2010, Fumiko's great-great-granddaughter might come to the National Archives seeking information about her ancestor. She will find a file folder that holds a unique record of her ancestor's difficult early years in this country, bears evidence of her government's recognition of its mistakes, and leads her to a wealth of information about her Japanese American heritage.

EAST WIND

Continued from Page 4

identified," Mr. Matsui's "chances are good." Campaigning in the largest populated state in the nation will require commensurate campaign financing; for the primary alone, some \$7 million is being sought.

(Having been a state-wide candidate on a far lesser scale in my own state, I have somewhat of an appreciation what this entails.)

CONGRESSMAN MINETA, was only ten years old in 1942 when he was shipped off with his family to barbed-wire camps. Some 25 years later, Norm launched his political career as a member of San Jose's City Council, moved on to become the City's mayor, and in 1974 was elected to the U.S. Congress. The congressman has steadily moved upwards, among many other things currently being the deputy whip of the House Democratic leadership, a post he has held for the past eight years. Without a doubt, the future holds (deserved) promotions for this dedicated public servant.

IT IS GRATIFYING to read of other Asian Americans who have committed themselves to the political arena, including Elaine Chao, Deputy Secretary of Transportation, reportedly the highest ranking Asian American in the Bush administration and the first to serve at the sub-Cabinet level in any administration. Also, there's Mike Woo, the first Asian American elected to Los Angeles' city council—an event long overdue.

It is good to see the coming of newer generations of Asian Americans on the political scene. Keep them coming.

JAPANESE AMERICAN CITIZENS LEAGUE

Leadership Conference



**ADVANCEMENT '90:
COMPETITIVE
STRATEGIES
FOR TODAY**

**October 25-26, 1990
Four Seasons Olympic Hotel
Seattle, Washington**

CONFERENCE HIGHLIGHTS

William H. (Mo) Marumoto
Chairman of the Board, The Interface Group, Ltd., former Special Assistant to President Richard M. Nixon, and management consultant specializing in executive search for Fortune 500 companies.

Ken Hakuta (Dr. Fad)
Entrepreneur, author and host of a nationally syndicated children's program. Marketer and merchandiser of cultural icons such as the Hula Hoop, Frisbee and Wacky Wallwalker, and host of "The Dr. Fad Show" which showcases original inventions by students

Vanna Novak
President, M.C. Communications, Inc., and consultant specializing in training and seminars on business presentation skills and effective interpersonal communication.

Byron Kunisawa
Director of Operations, Minority Training Resource Center, a private consultant and educator from San Francisco, nationally recognized for his work on leadership and organizational development, multi-culturalism, productivity and motivation.

JD Hokoyama
Executive Director, Leadership Education for Asian Pacifics (LEAP), a non-profit community-based leadership training organization in Los Angeles.

This two-day national Conference will explore the survival tools necessary to be competitive in both "corporate America" and the world market. Especially designed for Asian American professionals who want to expand and improve their management and executive-level skills. The Conference will showcase nationally prominent speakers and management consultants. Network with other Asian American professionals. Gain valuable insight during the leadership and communications workshops and panels. Meet CEO's, Presidents and Senior Executives of major corporations during the "Executive Luncheon." Explore issues that affect American Businesses in the face of increasing international competition during an Executive Panel Discussion.

EXECUTIVE LUNCHEON

This small group lunch will give you the opportunity to discuss strategies for climbing the corporate ladder with top executives. Dean Thornton, President, Boeing Commercial Airplanes, Luke Helms, President, Seafirst Bank, and George Walker, CEO, US WEST Communications, are just three of more than twenty executives who will be there.

WORKSHOP SERIES & PANEL SESSIONS

Power Speaking, Executive Resume Building, Developing the Quality Improvement Mindset, Influencing without Authority, Risk Taking, Designing and Delivering Winning Presentations, and Entrepreneur Panel.

EXECUTIVE PANEL DISCUSSION

Business executives, journalists, scholars, and policy makers discuss "Staying Competitive: The Future of American Business." Co-sponsored by the Asian Management Business Association (Asian MBA).

REGISTRATION FEES:

- \$300 Corporate Individuals.
- Individual registration rates available. Contact PNW JAACL offices at (206) 623-5088
- Enrollment is limited to 125 participants.
- The registration fee includes two continental breakfasts, two lunches, dinner, and social.
- For further information call Karen Yoshitomi, JAACL Regional Director, at (206) 623-5088.

ACCOMMODATIONS

A limited number of hotel rooms are reserved at the Seattle Four Seasons Olympic Hotel. Contact UNIGLOBE The Travel Store. 1-800-762-1913, for your air and hotel accommodations.

Registration Form

Please return completed form and payment to:

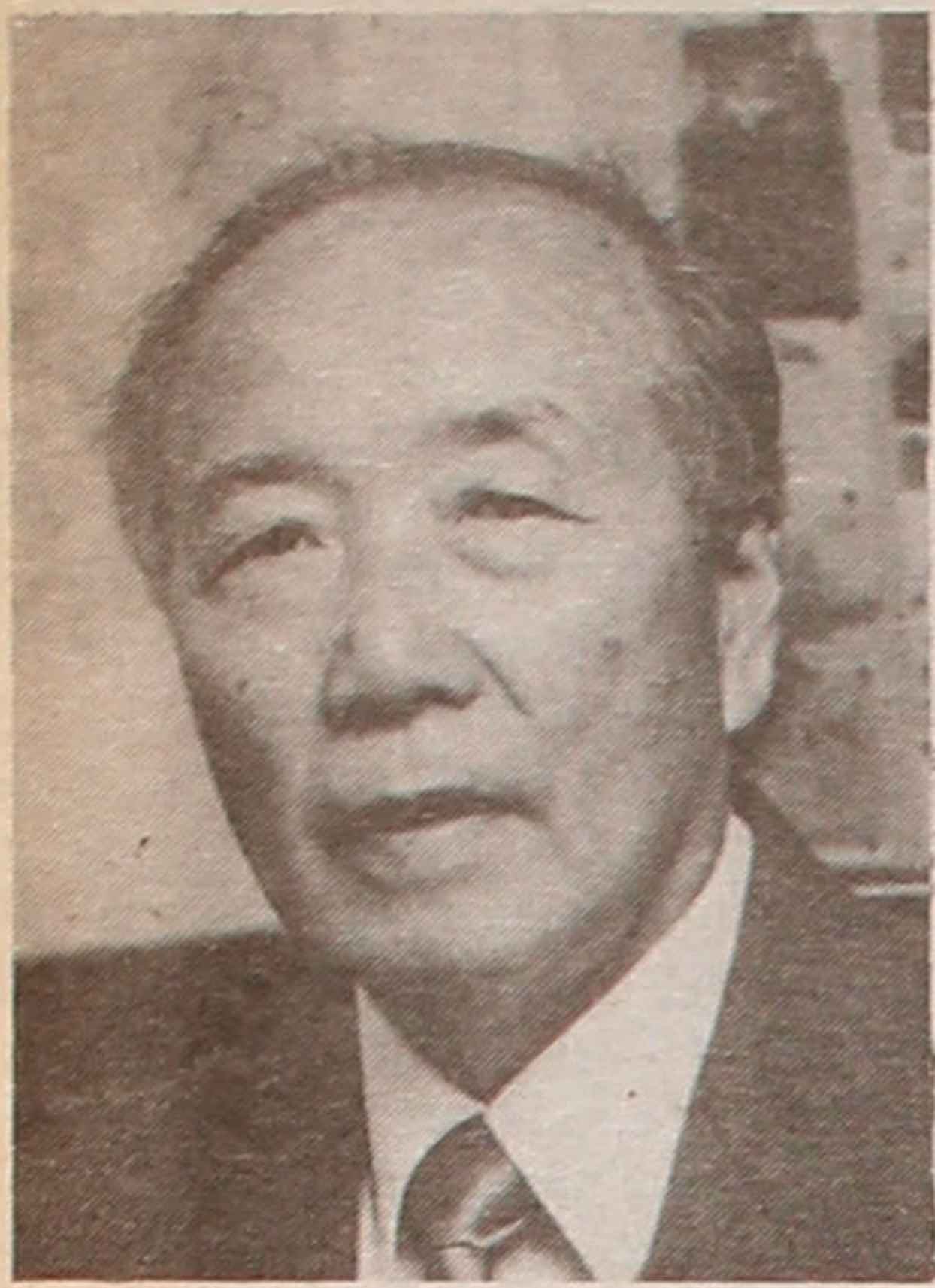
1990 Leadership Conference
JAACL District Office
671 South Jackson, Suite 206
Seattle, Washington 98104

Name _____
Address _____ City _____ State _____ Zip _____
Telephone (Day) _____ Telephone (Evening) _____
Job Title _____
Employer _____
Industry/ Field of Work _____



**ADVANCEMENT '90:
COMPETITIVE
STRATEGIES
FOR TODAY**

THE NEWSMAKERS



MICHAEL HOSHIKO

► **Michael Hoshiko** was recently elected as a Fellow of the American Speech-Language-Hearing Association (ASHA). He will be formally recognized at the Plenary Session during the Annual National ASHA Convention to be held in Seattle, Wash. in November. He is the first Nisei to be elected ASHA Fellow from a total membership of approximately 60,000. Hoshiko received his Ph.D from Purdue Univ. and is professor, Department of Communication Disorders and Sciences at Southern Illinois Univ. Carbondale, Ill. He is also Coordinator of Speech and Hearing Services at the Clinical Center of the university. He is serving as a site visit team chair for the accreditation of communication disorder programs and a member of the Multicultural Issues Board of ASHA. In 1952 Hoshiko and semanticist S.I. Hayakawa were the first Canadian Nisei to be elected to the membership in the American Psychological Association. Active in JACL, Hoshiko was the 1989 President of the St. Louis chapter and served on the national JACL nominating committee at the recent San Diego convention. As an active member of the Japanese American Amateur Radio Society (JAARS) he is on the air every day as W9CJW.

► **Don Tsunawaki**, one of 10 Los Angeles police officers was awarded the department's Medal of Honor recently for bravery in face of danger to life and limb, when he rushed to the aid of a pinned-down and injured partner during a North Hollywood shootout in July, 1989. He carried Officer Chate Asvcanonda to safety, using his own body to shield him until he could reach a waiting ambulance. The Sansei recruit had just completed his five-month training at the Police Academy and seven days of field experience. The honorees are selected from among 100 officers who are nominated from the 8,400-member force.

► The Vietnamese candidate, **Vu Duc Vuong** reported he has been endorsed by the Chinese Six Companies and the Chinese American Citizens Alliance in his bid for a seat on the Board of Supervisors.



CAROL KAWANAMI

► **Carol Kawanami, P.H.N.** of Villa Park, and an active Selanoco JACler, has been named treasurer of the American Lung Association of California, the statewide office of the Christmas Seal Association. She has been a American Lung Association volunteer since 1971. In 1986 she was named winner of the Pottenger Award, one of the most prestigious honors bestowed by the American Lung Association of California. The Pottenger Award honors outstanding service to the Association's goal—the control and prevention of lung disease.

► **Alice Suet Lee Barkley** of San Francisco has been appointed as public member to the Board of Examiners in Veterinary Medicine by Assembly Speaker Willie L. Brown, Jr. The Chinese American architect and an attorney, earned her degree in Architecture from UC Berkeley, and worked for several architectural and design firms before attending Hasting College of the Law. She is active in the Chinese American Democratic Club and the Nihonmachi Political Association.

► **Michael Nakamura** is the new Honolulu police chief. His grandmother, **Mrs. Oto Nakasone, 86**, emigrated to Hawaii 70 years ago from Okinawa.

► **Yori Wada** was among four new members elected to the board of directors of International House Berkeley, the 60-year-old residence and program center. The University of California regent (since 1977) is also active on the San Francisco Mayor's Criminal Justice Council, Nihonmachi Community Development Corporation, J.A. Democratic Club and the Private Industry Council.

► **George Shirakawa**, candidate for San Jose City Council's district 7 seat, is supporting the two-term limit for city council members, asserting "incumbents fall into the trap of doing whatever's possible to hang on to their jobs rather than representing the interests of the voters."

► **Dr. Kibimaro Ishida** son of Archbishop Nitten and Chiyoko Ishida of San Francisco, was recently awarded "Internist of the Year" at Kaiser West Los Angeles Hospital. Born in Camp at Crystal City, Texas during the war. He lived in San Francisco, went to UCLA medical school and internship residency at Cedars Sinai Medical Center. After 3 years in the Army in Germany, Kibi has been an internist at Kaiser West Los Angeles Hospital. He is married to Dr. Deborah R. Ishida, and has two children.

► A native of San Jose, **Dr. Paul S. Sakamoto** was honored by the Asian Americans for Community Involvement at its Freedom Awards dinner in Campbell Sept. 12. A prominent educator in the Bay Area since 1956, Dr. Sakamoto has served as chairman of the state Board of Education's Equal Education Opportunities Commission, a board member of Asian Americans for Community Involvement and the Foothill-De Anza Colleges Foundation, and a member of the Santa Clara County Juvenile Justice Commission and the State Superintendent of Public Instruction's Advisory Committee. Among the honors he has received are the Sunnyvale Jaycees' Outstanding Young Educator Award, the California Congress of Parents and Teachers Fellowship, the PTA Life Member Award, the California University's Distinguished Alumni Award, and the Santa Clara County Human Relations Commission's Human Relations Award.

► **Hironoshin Furuhashi**, president of the Japanese Olympic Committee (and known to U.S. swimming fans as the "Flying Fish from Fujiyama") said he is willing to succeed the late Shiek Fahad of Kuwait as president of the Olympic Council of Asia. Fahad, was killed in fighting during Iraq's invasion of Kuwait last month.

► **Cyril Nishimoto**, director of Japanese American Social Services, Inc. (New York) was appointed to Gov. Mario Cuomo's Asian American Advisory Committee, a group advising the Governor on issues related to the state's Asian American community. Its initial meeting was held on Aug. 22.

TOYO Myatake STUDIO

SAN GABRIEL VILLAGE
235 W. Fairview Ave., San Gabriel, CA 91776
(213) 283-5685, (818) 289-5674

LITTLE TOKYO
114 N. San Pedro St., Los Angeles, CA 90012
(213) 626-5681, 626-5673

Asian American Ophthalmologist Donates \$750,000 to Irvine Performing Arts Theater

IRVINE, Calif. — Irvine Barclay Theatre has received a pivotal leadership gift of \$750,000 from George and Arlene Cheng of Newport Beach.

The leadership gift, announced today by trustees' chairman Thomas H. Nielsen, vice chairman of The Irvine Company, is the second largest received to date.

"The trustees' goal was for Irvine Barclay Theatre's \$17.6-million construction cost to be completely raised by the Oct. 12 Trustees' Gala," Nielsen said. "Dr. and Mrs. Cheng's leadership gift has put us within close reach of our goal. We are honored to enjoy the Chengs' overwhelming generosity."

The Chengs, long-time supporters of the performing arts, immigrated from China to the United States more than 30 years ago. Their self-described "American dream" was realized through successful real estate investments and Dr. Cheng's medical practice.

"The Chinese words for America are *Mei Guo*, which means 'beautiful country,'" said Dr. Cheng, a Montebello ophthalmologist. "This is the land of dreams for immigrants from all over the world. It is gratifying to know that many who are so blessed have provided the enrichment of culture and education—that no one should be excluded from the enjoyment of freedom, life and happiness."

Among other factors which

prompted their contribution, according to Dr. Cheng, were UCI's high percentage of Asian students and he and his wife's desire to "set an example to other members of the Asian community and encourage their major participation in philanthropic projects."

Japanese Posters Exhibit to Show Through Oct. 21

LOS ANGELES—A retrospective exhibit, "The Best 100 Japanese Posters, 1945-1989," traces the development of postwar graphic design in Japan. Produced by Toppan Printing Co., it is now on display through Oct. 21 at the JACCC Doizaki Gallery. It premiered Sept. 14 in conjunction with the Los Angeles Festival.

San Jose Area Keiro-kai Dinner to Honor Seniors

SAN JOSE, Calif.—Yu-Ai Kai (Japanese American Community Senior Service) and the West Valley JACL Senior Club will sponsor its annual Keiro-kai Senior Appreciation Dinner on Saturday, Oct. 6, 4-6 p.m. at the Buddhist Church Annex.

Family members are encouraged to attend. Tickets are \$25 per couple, \$15 single; over age-75 free by invitation (names should be forwarded to Yu-Ai Kai, 565 N. 5th St., San Jose, CA 95112.) Info: (408) 294-2505.

INTRODUCING TIME DEPOSIT ACCUMULATOR

...A UNIQUE TIME DEPOSIT FOR THE 1990'S.

- Unlimited Deposits
- Higher Rates than the 6-Month T-Bill
- Even a Withdrawal Feature

Contact any Sumitomo branch office for complete information

*Substantial penalty for early withdrawal



CIRCULATION
Please allow four weeks for change of address as changes are made during the month and effective the first Friday of the month. There may be an exception at times.

ED SATO
PLUMBING & HEATING
Remodel and Repairs, Water Heaters
Furnaces, Garbage Disposals
Serving Los Angeles, Gardena
(213) 321-6610, 293-7000, 733-0557

J.apanese A.merican KAMON
The Original BRONZE "J.A. KAMON"

Individually handcrafted Kamon, designed especially for Japanese Americans to pass on to their descendants. A lasting, one-of-a-kind record created to commemorate the Issei in your family!

- KAMON RESEARCH / CONFIRMATION SERVICE
- KAMON GUIDE BOOKLET (\$4.00 Postpaid)
- BASIC FACT SHEET ON YOUR SURNAME. (Send \$7.00 w/kanji writing of name.)

Mail Orders / Inquiries to: **YOSHIDA KAMON ART**
P.O. Box 2958, Gardena, CA 90247-1158 • (213) 629-2848 for Appt.
KEI YOSHIDA, Researcher / Artist NINA YOSHIDA, Translator

MOTOROLA
Engineers and Technicians

機会

Make Your Move Back to Japan.

日本モトローラ株式会社

Nippon Motorola Ltd., is a well established subsidiary of Motorola, Inc., and one of Japan's most highly respected American high tech companies. For more than 28 years we have grown steadily through product innovation and manufacturing excellence. Our fields are communication systems, semiconductor devices, automotive and industrial electrical components and information systems equipment.

We seek individuals whose academic focus is on digital, analog, RF and switching systems and who wish to pursue a career in installation, systems or service. We also have many other challenging opportunities in the fields of Management, Sales, Marketing and Personnel that can make your return to Japan a double blessing. Openings exist at our facilities in Tokyo, Osaka, Sendai and Aizuwakamatsu.

You must have a superior understanding of the Japanese culture and written and spoken communication skills.

Please fax your resume in strictest confidence to (602) 731-3606 Attn: Don Fahland, or mail to, **Nippon Motorola Ltd., Recruiting P.O. Box 3105, Tempe, Arizona 85281.** Equal Opportunity Employer

FREE FACTS!

While the cost of living keeps going up . . . isn't it nice to know that there's a place where — for free — you can find the answer to most every question that you might have? In times like these, can this really be true? Yes! And all you have to do is . . .

ASK YOUR LIBRARIAN

1990 Holiday Issue Notice

The Holiday Issue advertising kits are being completed by the staff for distribution soon after the Labor Day weekend. It will consist of basic instructions, Bulk Rate Card No. 12 (rates are the same as last year): \$12 per column inch, \$5 per one-line greetings, \$840 for one page, \$1,170 for a pair of pages), insertion orders of ads which appeared in the last Holiday Issue for renewals, and a supply of blank forms for new orders.

The deadlines are:

- Nov. 1—Bulk Rate Space Reservation.
- Nov. 15—Ad Copy, One-Line Greetings.
- Nov. 30—Final for All Ads and Stories.

Holiday Issue goes to press on Tuesday prior to Christmas.

Pacific Citizen Holiday Issue

941 E. 3rd St., Rm. 200, Los Angeles, CA 90013
(213) 626-6936 - Fax—626-8213

PROGRAMMER

SYSTEMS ENGINEER

Bilingual: English/Japanese

We have several OUTSTANDING opportunities for bilingual Systems Engineers to develop a security information service system for rapidly growing international Financial Services Company.

BSEE or Computer Science degree required—recent graduates welcome. 0-4 years experience in Analysis, Design and Testing of Software. C/UNIX and PL1 experience with mini computers is helpful but not a must. Will train the right candidates.

Salary commensurate with experience. Comprehensive company benefits package. For IMMEDIATE confidential consideration please contact:

MISS THERESA RYAN

PHOENIX COMMUNICATION

43 Montgomery St.,
Jersey City, NJ 07302
(201) 860-0077
FAX: (201) 860-9807

National Business & Professional Directory

Your business card in each issue for 25 issues is \$15 per line, three-line minimum. Larger type (12 pt.) counts as two lines. Logo same as line rate as required.

Greater Los Angeles ASAHI TRAVEL Supersavers, Group Discounts, Apex Fares Computerized-Bonded 1543 W. Olympic Blvd., #314, L.A. 90015 (213) 487-4294 • Call Joe, Gladys or Hazel	San Jose, Calif. EDWARD T. MORIOKA, Realtor (408) 559-8816 a.m. : 998-8334 p.m.
FLORIAN VIEW GARDENS Flowers, Fruit, Wine & Candy Citywide Delivery/Worldwide Service 1801 N. Western Ave., Los Angeles 90027 (213) 466-7373 / Art & Jim Ho	Watsonville, Calif. Tom Nakase Realty Acreage, Ranches, Homes, Income TOM NAKASE, Realtor 25 Clifford Ave. / (408) 724-6477
Dr. Darlyne Fujimoto Family Optometry & Contact Lenses 11420 South St, Cerritos, CA 90701 (213) 860-1339	San Francisco Bay Area Y. KEIKO OKUBO Ten Million Dollar Club 46703 Mission Blvd., Fremont, CA 94539 (415) 683-0600
TAMA TRAVEL INTERNATIONAL Martha Igarashi Tamashiro 626 Wilshire Bldg., Ste 310 Los Angeles 90017; (213) 622-4333	VETERAN REAL ESTATE sm HAZEL BUTTERFIELD—Residential Specialist 6298 Mission St., Daly City, CA 94014 Office: (415) 991-2424, Pager: (415) 637-6424
Orange County Victor A. Kato (714) 841-7551 • Exceptional Real Estate 17301 Beach Blvd., Suite 23 Huntington Beach, CA 92647	Sacramento, Calif. SHARON NODA, GRI COOK REALTY Residential/Investments (916) 451-1401 - Res. Ofc. (916) 567-9050 - Voice Mail
Dr. Ronald T. Watanabe CHIROPRACTOR 7102 Edinger Avenue Huntington Beach, CA 92647 (714) 846-0584	Seattle, Wash. Imperial Lanes Complete Pro Shop, Restaurant, Lounge 2101-22nd Ave So., Seattle (206) 325-2525
North San Diego County Realty Executives 1817-A Vista Way, Vista, 92083 Ask for K. J. Sameshima - Dedicated Service Office (619) 758-2300, Res. (619) 726-5052	The Intermountain Mam Wakasugi / Blackaby Real Estate 190 SW 4th Ave., Ontario, OR 97914 (503) 881-1301 or (503) 262-3459
San Diego, Calif. Paul H. Hoshi Insurance 852 - 16th St., San Diego, CA 92101 Office (619) 234-0376 Res. (619) 421-7356	PC's Home for Your Business-Professional Calling Card
WENDY JO NIWA, Realtor Office (619) 566-2810 Res. (619) 284-2846	

4—Business Opportunities

CANADA
FOR SALE: By owner, Golden Spur Store, Clearwater, B.C. Established 1950, with 2nd owner since 1971. Gross sales \$600,000 plus. Sale mix: gas, groceries, propane, laundromat, lottery, pub, etc. Commercial building area: 6400 sq ft. Living: 14x70 mobile with addition, patio and pool. Owner selling due to health reasons. Asking \$325,000 plus inventory. Contact Mr. Saari, (604) 587-6216. Box 3616 R.R. 2, Clearwater, B.C., V0E 1N0 Canada.

MANITOBA, CANADA
 By Owner Due To Health
ACCREDITED AUTO-BOODY REPAIR SHOP
 well established in a great community serving a large area. Good location and building newest up to date equipment. Fenced compound. Sales good. Showing increase over previous owner. Steady (204) 522-8446 or (204) 522-3250. Box 130, Melita, Manitoba, R0M 1L0 Canada.

ONTARIO, CANADA
SPORTS bait business, hunting & fishing equipment, guns, bows & camping supplies, skate sharpening, 2 apts above store, Buy business only and rent real estate, or buy business and building for \$350,000 complete, private sale. Owner, 84 Bonnechere St. Eganville, Ont, Canada K0J 1T0. (613) 628-2337. (613) 628-2810.

ONTARIO, CANADA
COFFEE shop, coin laundry, Shell service station in Bayfield near Lake Huron, incl 2 bdrm & 1 bdrm apts. \$265,000. 1/2 down, owner finance balance. Equip & stock extra. Private sale, will train. Call (519) 565-2824 Or write: Box 149 Bayfield, Ont, N0M 1G0, Canada.

B.C. CANADA
GROCERIES, central B.C., 1.5 million sales, land, building & equipment. \$595,000 + stock. By owner, will train. (604) 453-2229 Or write: Box 460 Ashcroft, B.C., V0K 1A0, Canada.

CANADA
NORTHWESTERN, Ontario. Hwy 17 midway Sault Ste. Marie & Thunder Bay. Licensed restaurant-98, store, laundromat, gas & diesel, 6 cabins, owners quarters, huge new garage or workshop, men's dorms and apartments. Excellent return on investment. Listed at \$475,000. Call Theresa, (807) 822-2560 after 6 pm daily.

B.C. CANADA
Excellent Opportunity
 Incorp. Company in Video rental & electronic retailing located in Comox Valley, projected 1990 gross of \$340,000. For sale by owner. Contact Nena or John Bill, 264 Anderson Rd, Comox, B.C., V9N 7A2. Bus (604) 339-0112, res (604) 337-8840.

JACL FUNDRAISING ADMINISTRATOR

The JACL Legacy Fund is a perpetual endowment which will be used to implement the organization's mission, its purpose and its Program for Action.

The Legacy Fund Administrator will be responsible for all aspects of the fundraising campaign including public relations, development of materials, coordination of solicitations, special events and other duties.

Candidate should have strong administrative skills. Prefer prior fundraising experience and/or experience with nonprofit organization.

Compensation on a contract basis ranging from \$25,000 - \$40,000.

The position is located in San Francisco and will report to the JACL National Director.

Send resume to JACL National Director, 1765 Sutter St., San Francisco, CA 94115.

25,000 SQ FT COMMERCIAL LOT

Michigan State University Counseling Center is seeking a doctoral-level Clinical/Counseling Psychologist. Applicants should have experience that reflects and emphasis on working with Asian Pacific American and other minority students seeking individual and group counseling, psychotherapy and/or outreach services. An earned doctorate in clinical or counseling psychology, eligibility for licensure in Michigan and a one year APA accredited internship are required of psychologists. Supervision of doctoral-level psychology practicum students and interns are expected. Appointment is on a permanent 10-month basis (September - June). Salary is negotiable with liberal fringe benefits. The Counseling Center is accredited by the International Association of Counseling Services and for predoctoral psychology internship training by APA. For application, please call: (517) 336-1662. Refer to posting P982. Return with application: letter of application, vita, transcripts of graduate work and three letters of recommendation.

Closing date: December 30, 1990.

MSU is an Affirmative Action/Equal Opportunity Institution

LAPD is Testing in the SAN DIEGO AREA

The Los Angeles Police Department is actively recruiting minorities and women for current Police Officer vacancies.



\$32,000 - \$37,000+ annually

Minimum Requirements: HS Diploma or GED • 20 1/2 yrs-34 yrs

KINGS INN HOTEL - 1333 Hotel Circle South

Friday, September 28, 1990 - CARDINAL ROOM

Written Test at 10:00 a.m., 2:00 p.m. and 7:00 p.m.

Saturday, September 29, 1990 - CARDINAL ROOM

Written Test at 8:30 a.m., 11:00 a.m. and 2:30 p.m.

Saturday, September 29, 1990 - LANCERS & KNIGHTS ROOM

Written Test at 6:00 p.m.

Successful candidates may have the option of taking their interview in San Diego on September 29th or 30th. Space is limited.

Call 213/386-LAPD or Toll Free: Within CA 800/252-7790 for more information. EEO/AA

Classified Ads

4—Business Opportunities

ONTARIO, CANADA
METAL fabricating business, house, 2 acres, 3 modern industrial buildings, totaling 8000 sq ft. \$500,000 sales volume—excellent family operation. Asking \$899,000, turn key.

VARIETY store & video business. Stone house in quiet res area, store & video sales volume \$400,000. Reduced to \$269,900 + stock approx \$20,000 - great business for over 20 years.

On the above opportunities contact Bill McCormick, Broker, Cambridge Realty (Galt), (519) 623-2304, (519) 621-2000. 51 Water St. North, Cambridge, Ontario, N1R 3B3 Canada.

CANADA PRIME HOTEL FOR SALE

Full service hotel with 72 rooms, indoor pool, 80 seat dining room, lounge, 4 banquet/meeting rooms for 30 to 400 people. High occupancy with single room rates \$43 to \$53. Free standing 60 seat family restaurant on property: Building 25 years old, architecturally designed steel and brick construction with major 27 room/pool addition 10 years old. Large paved parking lot. Located in Estevan, Sask. on highways #18, #39, and #47. Main route between E Ontario, Mid West USA to W Canada, Alaska. Activity in area: oil, gas, coal, brick mfg, farming and two power plants. Currently under construction: Rafferty Dam, Shand Power Station, \$7 million recreational centre and \$35 million Hospital.

Original owner/operator ready to retire. Priced to sell at below replacement cost. Financing available with substantial down payment. Would consider trade for high quality real estate. \$3,350,000. Immigration status available. Inquiries to Nick Morsky at (306) 634-3685 (w), or (306) 634-2402 (h). Fax (306) 634-4878.

B.C. CANADA—Beautiful picturesque lic'd restaurant with adjoining conven store, Chevron Service Stn, propane filling stn, on approx 5 acres of land, loc in a beautiful Mtn Valley on Hwy 37 outside Cassiar in Northern B.C. 80 mi from Alaska Hwy. No Municipal taxes, selling price, \$1,200,000 with option to buy adjoining property with beautiful lge mobile home on 2 1/2 acres land, commercial zoned. Please call (604) 778-7549, lve msge or write: BH & B Holdings, Box 248, Cassiar, B.C. V0C 1E0.

5—Employment

GOVERNMENT JOBS \$16,040 - \$59,230/yr. Call (805) 687-6000 Ext. R-1317 for current Federal list.

INTELLIGENCE JOBS! F.B.I., C.I.A., U.S. Customs, D.E.A., etc. Now Hiring. Call (805) 687-6000 Ext. K-1317.

\$40,000/yr! READ BOOKS and TV Scripts. Fill out simple "like/don't like" form. EASY! Fun relaxing at home, beach, vacations. Guaranteed paycheck. FREE 24 Hour Recording. (801) 379-2955 Ext. CE476B.

KOVR-TV is actively searching for a COMMUNITY DEVELOPMENT ASSISTANT for our Sacramento location. Position requires a High School Diploma or equivalent with basic secretarial skills, WordPerfect computer experience, production and word experience and good creative writing skills. FCC license renewal experience preferred. Send resume to KOVR-TV, 2713 KOVR Drive, West Sacramento, CA 95605, Attn: Community Development Manager.

Sales/Marketing Bilingual Japanese

Fortune 200 electrical electronic manufacturer seeks an entry level college degree person to coordinate sales in the United States & Japan. Relocation to Pennsylvania and long term international sales potential. U.S., permanent resident or citizenship required. Call Joe Ellis (800) 999-4225, Monday - Friday, 9:00am - 5:00pm, Pacific Standard Time.

6—For Sale

CHEAP! FBI/U.S. SEIZED

84 VW \$50
 87 Mercedes \$200
 85 Mercedes \$100
 65 Mustang \$50
 Choose from thousands starting \$25.
FREE 24 Hour Recording Reveals Details
 (801) 379-2929 Ext. Cj476C U.S. HOTLINE copyright.

9—Real Estate

Direct Sale By Owner
 West Virginia—Webster Co. 1700 sf, 3 Br, 1 1/4 Ba, large wood/oak kitchen, deck, stone patio, excel well, country/elec heat. Recently remodeled. Pond, outldg, wild life, privacy, mountain top views & scenic 1 hr drive from Snowshoe ski resort. Hse w/3 acres \$56K. Approx 30 acres avl neg. (304) 872-2756. Asking \$100,000.

ONTARIO, CANADA
 Attn Investors
PRIVATE LAKE
 Perfect for Estate, Camp or Corporate Retreat. Only 2 hrs N of Tor, 15 min S of Parry Sound. About 80 acres mature woods & 4000' shoreline; S exposure. Use over 300 acres adjacent crown land. \$549,000. Barry (416) 491-4999.

ALBERTA, CANADA
 Attention Investors
CANMORE
 PRIME CORNER LOT, main entrance to town. 25,000 sq ft commercial lot, ideal for restaurant or small mall, located 15 miles from Banff, Canmore is booming. Asking price \$185,000 private sale. Phone (403) 678-5306, leave message.

B.C. CANADA
TAHIS SPRINGS DEVELOPMENT
 Exclusive recreation condominiums on west coast of Vancouver Island. Enjoy Salmon, Steelhead, Halibut & Trout fishing as well as many recreational activities, year round in natural paradise. Units starting at \$35,900 fully furnished, financing available at 10.75%. For more info contact: Tahis Spring Development c/o Rockland Apts. Ltd. #125-1555 McKenzie Ave., Victoria, B.C., V8N 1A4 or (604) 721-2117.

10—Rental

LOS ANGELES, CA
HOLLYWOOD BRAND NEW LARGE ONE & TWO BEDROOM APTS.
 Pool, jacuzzi, gym, individual security system, fireplaces, gated garage & more.
 From \$775 & up
 1200 No. June St.
 (213) 466-4004

LOS ANGELES, CA
Luxury Hancock Park Adj.
 2 Br/2 Bath, fireplace, a/c, pool, gated parking. Beautiful bldg.
 Quality apt from \$900.
 (213) 388-4336
 550 S Gramercy.

LOS ANGELES, CA
HANCOCK PARK LUXURY
 2 BR/2 BATH, individual security system, fireplaces, roof top pool & jacuzzi, gated parking. ACROSS FROM WILSHIRE COUNTRY CLUB.
 From \$1345 & up
 500 N. Rossmore
 (213) 465-3095

11—Travel

DEEP VALLEY OUTFITTERS
 Licensed, Bonded, Insured Outfitter. Specializing in Moose, Whitetail, Mules, Wolf and Spring & Fall Black Bear. Bow Hunters Welcome. Call now for immediate booking! 1990 wide open, plenty of bear. Bill Wentworth, General Delivery, Stony Plain, Alberta, Canada T0E 2G0. Phone (403) 963-7509. Mobile, (403) XJ6-3350.

JACL LEGACY FUND

Continued from the Previous Page

Americans were still struggling to establish themselves after the tragedy and suffering which resulted from the displacement and incarceration of 1942.

Through the establishment of this Legacy Fund, Uyehara said, "We will not only leave a legacy for future generations but by our work to eradicate racism and to continue the fight for justice and fairness for all, we will remember the struggle and the dignity of the Issei generation who taught us, by their example, how to work for the goals in our communities."

The campaign's foundation is the chapters and the membership who know about JACL's struggle for justice and equality. JACL seeks support of all those who struggled through the years to change the laws and to bring about a more democratic society.

The District Governors will be receiving their district goals, based on membership and will have responsibility to mutually work out chapter goals. Consideration will have to be given to each community's potential. The Governors are to submit their district campaign plans to the chair by Sept. 28.

"The JACL Legacy Fund Campaign is moving forward. The ten million dollar goal will be reached by the active participation of every chapter and the JACL membership," Uyehara concluded.

OBITUARIES

Umeko Delmar Gotanda, 75, Los Angeles, Aug. 9; L.A.-born, survived by s Dennis, Wayne, d Sandra Yonemoto, 8gc.

Nobuko Moriyama, 59, Del Rey, Calif., July 29; Honolulu-born, survived by h Tsutomu, s Craig, Michael, lgc, m Yoshiko Sasahara (Hawaii), br Harold, Edward, Richard (all Hawaii), James (Los Angeles), sis Joella Kawamoto, Judy Kamalii (both Hawaii), Laura Amimoto, in-law m Kiyu Moriyama.

Tom Toraji Takemoto, 87, Upland, Aug. 11; Fukuoka-born naturalized U.S. citizen, survived by s Frank (Colorado), James, Dick, d Sadie Shintani (Ontario), Minnie MacLean, Nellie Moon, Sayko Bauer, Margaret Nakata, Ruth Spaur (all four of Denver), 8gc, 2lgec.

Chiye Takeuchi, 55, Camarillo, July 30; L.A.-born, survived by h Mitsuo, d Stephanie, m Sata Watanabe, sis Momoyo Wada (Orange).

Masayuki Uto, 57, Santa Monica, July 3; Kagoshima-born naturalized U.S. citizen, survived by w Ritsuko, s Masatoshi, d Satomi Schupp, Rika, b Morio, sis Toshiko Kubo.

Soyono Sophie Watanuki, 69, Los Angeles, Aug. 10; Auburn, Wash.-born, survived by h Frank, br Yoshio, Frank and Joe Natsuhara, sis Umeko Shiotani, Kazuko Kubo, Setsuno Noshio, Mae S. Tengan, in-law br Tom Watanuki, sis Hana Mayeda, Tsuyako Seehaas, Mary Watanuki.

Joyce Shizuko Yamaoka, 67, Westminster, Calif., July 23; Sacramento-born, survived by h Tony Yukio, s Rick, Thomas, Tony Jr., d Lily Hara, 9gc, m Shizuyo Hiroshima, br Kenneth, Larry, sis Agnes Chiya.

George A. Yano, 69, Los Angeles, Aug. 12; L.A.-born, survived by unc Kazuo.

Monuments & Markers for All Cemeteries
櫛山石碑社
 KUSHIYAMA SEKIHI-SHA
 EVERGREEN MONUMENT CO.
 2935 E. 1st St., Los Angeles, CA 90033
 Bus.: (213) 261-7279 - Res.: (213) 283-5855

Serving the Community for Over 30 Years

KUBOTA NIKKEI MORTUARY
 Formerly Shimatsu, Ogata & Kubota Mortuary
 911 VENICE BLVD.
 LOS ANGELES, CA 90015
 (213) 749-1449
 R. Hayamizu, President
 H. Suzuki, V.P./Gen. Mgr. Y. Kubota, Advisor

Four Generations of Experience
FUKUI MORTUARY
 Inc.
 707 E. Temple St.
 Los Angeles, CA 90012
 (213) 626-0441
 GERALD FUKUI, President
 NOBUO OSUMI, Counselor

FORM CRT-57
 The Office of Redress Administration has developed a form (CRT-57) to deal with individuals who may be eligible for redress payments but have passed away. Write to ORA, P.O. Box 66260, Washington, DC 20035-6260 for the form.

THE CALENDAR

● **BERKELEY**
 Sept. 29—"The Autumn Prelude" benefit dance, sponsored by Lake Park United Methodist Church, at North Berkeley Senior Center, 8 p.m. - midnight, music by "Sentimental Journey," tickets \$12.50 per person. Call (415) 893-7092. No tickets sold at door.

Oct. 6—"A Sentimental Journey—A Sansei Celebration of the Nisei," North Berkeley Senior Center, 7-11:30 p.m. Program and dance. \$10. Info: (415) 237-1131.

● **CHICAGO**
 Sept. 27—Asian American Bar of Greater Chicago Area reception to honor Judicial Candidates. 5:30-8 p.m., 115 So. LaSalle St. Suite 3600, Chicago. RSVP to Jean Kim (312) 346-8000.

● **EAST SAN GABRIEL VALLEY**
 Oct. 6—18th Annual Aki Matsuri at 1 p.m. to 10 p.m. The Center is located at 1203 W. Puente Ave., West Covina. Info: (818) 960-2566.

● **LOS ANGELES AREA**
 Present-Sept. 29—"Paper, Glass and Shadow," paper assemblages by artist Kathleen Nojima at Kikuyu Gallery in Glendale. Info: (818) 957-2283.

Sept. 26—Premiere benefit screening of "Shimon" documentary on the trials and tribulations of Koreans born in Japan. Wednesday, 6 - 8 p.m., Transamerica/Occidental Life Auditorium, 1139 S. Hill St., Los Angeles. Tickets \$20 gen. adm. \$15 seniors, students. Info: Visual Communications (213) 680-4462.

Sept. 28—Restoration of architectural treasures offered at annual dinner event of the China Exploration & Research Society, to be held Empress Pavilion Restaurant in Chinatown. A display of ethnographic items and a silent auction will begin at 6:30 p.m. Public is welcome, reservations are required. For further information and reservations, call Robin Shapiro at (818) 884-7741.

Oct. 11—Asian Business Leagues' Pacific Rim Forum Focuses on ASEAN Countries at Baltimore Hotel 4 p.m. Info: Alan Kam (213) 489-2668/Naoimi Kuramoto (213) 383-9694.

Present-Oct. 21—Retrospective post-WWII Exhibit. "Best 100 Japanese Posters: 1945-1989" JACCC Doizaki Gallery (closed Mon.), info: (213) 628-2725.

Sept. 25—Occidental College Bird Studio discussion on contemporary Japanese music by Kiyotomi Yoshizaki, composer; 4:15 p.m., Info: (213) 259-2785.

Sept. 30—The search is on for the international singing champions of Los Angeles! Nikkodo USA, one of the founders of karaoke is proud to sponsor the 1990 Nikkodo International Karaoke Contest in cooperation with the Los Angeles Festival. Open to the public (no professionals, please!) \$2,000 cash, trip for two to Japan and Hong Kong, and exclusive recording contract with Polydor Records! Pasadena Civic Auditorium, 8:00 p.m. Info: (818) 401-0230.

Oct. 6—18th Annual Aki Matsuri (Fall Festival). 1:00 p.m. Public cordially invited. East San Gabriel Valley Japanese Community Center, 1203 W. Puente Ave., West Covina. Info: (818) 960-2566.

Oct. 6—Pacific Asia Museum Art Auction, dinner, 6 p.m. Info: (818) 449-2742.

Oct. 7—Japanese American Historical Society of So. Calif., fundraiser, Ken Nakaoka Center, Gardena, 12:30-3 p.m., RSVP: (213) 669-0189.

Oct. 7—Keiro Services Yuppie Yaki II picnic, at Police Academy, 1880 N. Academy Dr., 11 a.m.-4 p.m.; Info: (213) 263-5693.

Oct. 12-14—Asian American Voters Coalition National Conference, Biltmore Hotel; Info: Irvin Lai (213) 735-1331; Inder Singh (818) 708-3885.

Oct. 16—Asian Business Association 13th Annual Awards Banquet, Reception at 6 p.m., ceremonies at 7 p.m. Beverly Hilton Hotel, 9870 Wilshire Blvd. Info: (213) 481-8477.

Oct. 27—Little Tokyo Health Fair. Wide variety of screening services for dental, vision, hearing, podiatry, blood pressure, etc. Free flu shots. Info: (213) 680-3729.

Dec. 22—Orange County Sansei Singles Christmas Dance, Holiday Inn. Info: Joy Murosako (213) 473-8908.

● **ORANGE COUNTY AREA**
 Sept. 30—Orange County Sansei Singles annual picnic on Sunday at Liberty Park in Cerritos (Studebaker St.) from 10 a.m. - 4:30 p.m. Games, food; Bento, drinks etc. will be provided, however

reservations must be made by Sept. 25. \$5.50 members, \$4 children and \$8.50 non-members. Info: (213) 715-6839, (818) 571-5571, (714) 528-7837.

● **OGDEN, UTAH**
 Oct. 27—Reunion of all Japanese families who have resided in Box Elder County, UT. Sat., at Ogden Park Hotel, Ogden. Info: Don Tazoi, P.O. Box 324, Garland, UT 84312, (801) 257-7363.

● **SAN DIEGO**
 Sept. 22—VFW Fundraiser, 6 p.m. Info: Kottie Uyeji, 477-4583.

Oct. 7—Food Festival, S.D. Buddhist Church, 11 a.m.-3 p.m., Info: (619) 239-0896.

● **SAN FRANCISCO BAY AREA**
 Sept. 29—Nisei & Retirement Update: Legal Aspects for Retirees, Nihonmachi Terrace, 1615 Sutter St., S.F. Brent Kato, L.L.B., spkr; Info (415) 731-2967.

Oct. 7—Nisei Widowed Group meeting, 2-4 p.m., Haru Baba res., Info: Elsie Uyeda Chung (415) 221-0268; Yuri Moriwaki (415) 482-3280.

Oct. 20—Japanese American Services of the East Bay Award Dinner, 6 p.m., Oakland Airport Hilton: Ichiro Nishida, dnr chair. Info: (415) 848-3560.

● **SAN JOSE, CALIF.**
 Oct. 6—Yu-Ai Kai West Valley JACL Keiro-no-Hi dinner, San Jose Buddhist Church Annex, 4-6 p.m., (Guests 75 & over free), Info: (408) 294-2505.

● **SAN LORENZO, CALIF.**
 Oct. 20—Gohan: Dinner Club, Octoberfest, Pinebrook Inn—Nov. 17, Italian Nite. Contact Don Akiyama other events (415) 317-9551.

● **SAN LUIS OBISPO**
 Oct. 5-7—The Gila River, Arizona Camp 2 Butte High School Reunion is set in San Luis Obispo at the Embassy Suites Hotel. Registration fee of \$85 includes a Friday night mixer, dinner and dance. Sunday barbecue and a souvenir reunion booklet. For info: George Kikuchi 1340 Garrans Dr., San Jose, CA 95130, (408) 246-3511 or Haruo Hayashi (805) 489-2595.

● **SANTA ROSA**
 Oct. 7—Afternoon of Japanese Dance by students of Hanayagi Juteika at the new Spreckels Performing Arts Center in Rohnert Park. 2:30 p.m., tickets \$10, available at door or call (707) 539-2325.

● **SEATTLE AREA**
 Present-Sept. 30—"The Art of Northwest Nikkei" (first installation), exhibit of art work by contributors to *Northwest Nikkei*, Panko's, 4850 Green Lake Way N., during restaurant hours. Info: Michelle, (206) 623-0100.

Sept. 24—Reading by Kazuo Ishiguro from his book "Remains of the Day", Elliott Bay Books, 101 S. Main St., 7:30 p.m. Free. Info: (206) 624-6600.


Oct. 6—Recent collage paintings by Nori Okamura, Azuma Gallery, 313 E. Pine St., 11 a.m. - 6 p.m. Info: (206) 622-5599.


Present to Nov. 4—"Eternal Laughter: A 60 Year Retrospective by George Tsutakawa," Bellevue Art Museum, Bellevue Square, Museum hours. Adm: \$3 gen, \$2 sr/students. Info: (206) 454-6021.

Publicity items for The Calendar must be typewritten (double-spaced) or legibly hand-printed and mailed at least THREE WEEKS IN ADVANCE. Please specify a day or night phone contact for further information.

SUPPORT P.C. ADVERTISERS

KAMON PLAQUES BY MAIL
 6" x 6", \$30.00 7" x 9", \$40.00
 Also in 8" x 10", 9" x 12" and 14" x 16" Shikishi Frame
 Please send for Kamori Plaque Order Form.
 Phone: (707) 874-2845 ICHIBAN GRAPHICS
 Fax: (707) 874-1367 12989 OCCIDENTAL ROAD
 SEBASTOPOL, CA 95472

1990 TANAKA TRAVEL TOURS
 EXCEPTIONAL VALUE ● TOP QUALITY TOURS
 EAST COAST & FALL FOLIAGE (10 days) OCT 1
 JAPAN AUTUMN ADVENTURE (Ext-Hong Kong) (14 days) OCT 8
UPCOMING 1991 TOURS
 MEXICO YUCATAN & CANCUN (8 days) FEB 4
 FLORIDA DISNEY-EPOT & NEW ORLEANS (8 days) FEB 23
 JAPAN SPRING ADV (Inc. Festival) (14 days) APR 10
 JAPAN SHIKOKU-KYUSHU (13 days) May 13
 YELLOWSTONE/MT. RUSHMORE (8 days) MAY 28
 CALL OR WRITE TODAY FOR OUR FREE BROCHURES

TANAKA TRAVEL SERVICE
 441 O'FARRELL ST., SAN FRANCISCO, CA 94102
 (415) 474-3900

Japanese Phototypesetting

TOYO PRINTING CO.
 309 So. San Pedro St., Los Angeles 90013
 (213) 626-8153

JACL PULSE

● **CONTRA COSTA**
 Contra Costa Chapter Family BBQ, Sunday, Sept. 23, 5 - 8 p.m. El Cerrito Community Center, 7007 Moeser Lane, El Cerrito. \$7.50, checks payable to Contra Costa a JACL, send to Y. Tokiwa, 2859 Loyola Ave. Richmond, CA 94806.

● **FLORIN**
 Florin JACL sponsors fall talent show Oct. 12 at Sacramento Buddhist Church; dancers, vocalists, pianists, instrumentalists, etc., are encouraged to participate. Info: Pearl Zarilla or Paul Takehara (both 916) at 635-2815 or 363-8800.

● **GREATER L. A. SINGLES**
 Oct. 6—Greater L A Singles JACL annual scholarship fund raising dance featuring Music by Taka, 7:30 p.m. - midnight. Gardena Japanese Cultural Institute, 16215 S. Gramercy Pl. \$10 by check in advance to Joyce Binz, 1049 W. 187th St., Gardena, 90248; \$12 at door. Info: Joyce (213) 329-5882, June Furuta (213) 323-2783.

● **POCATELLO-BLACKFOOT**
 50th Anniversary Reunion of JACL members from Rexburg, Idaho Falls and Pocatello, Sat., Nov. 3, at Cactus Pete's in Jackpot, Nevada. Banquet, keynote speakers (including Nat'l Pres. Cressey Nakagawa), renewing old friendships and meeting new friends.

● **RENO**
 Nov. 18, Sunday, 12 noon-3 p.m. Mochi Tsuki and Pot Luck at Knights of Pythias Hall, 900 Nevada St., Chairperson Sakae Tsuda.

● **SEATTLE**
 The Seattle Chapter JACL has moved to its new office at the Japanese Language School, 1414 S. Weller St. The new phone number is: 322-3589.

● **SEQUOIA**
 The 18th annual Keiro Kai dinner is scheduled for Saturday, Oct. 27 at the PA Buddhist Hall. The annual event honors the area pioneers aged 70 and over. Younger members in the community are encouraged to support this worthwhile event. If there are any new 70 year olds and other seniors of the Japanese American community who have been missed in the past, please call Miyo Nakanishi at (415) 322-4514.

The Dec. 31 New Years Eve Dinner-Dance will be held at the Holiday Inn in Palo Alto. The dinner will begin at 8 p.m. after the cocktail hour starting from 7 p.m. The menu will be prime rib or chicken. The cost will be \$100 per couple or \$50 per person. Music will be provided by Ed Oliveira, the Tunes Mobile Disc Jockey. More Info: Hiroko Yoshida (415) 854-1392.

The Palo Alto Youth Services are sponsoring an Awards and Kickoff (for the season) Potluck dinner on Sept. 28, Saturday at the P.A. Buddhist Temple Hall. All PAYS as well as JACL Jr. Olympic participants and family and friends are invited, which begins at 6 p.m.

● **SONOMA**
 Mei Nakano will present the history of the Japanese American woman based on her research for her book, "Strength and Diversity: The Experience

of three Generations of Japanese American Women. Please attend this free event Monday, Oct. 8, 12 noon at the Newman Auditorium, Emeritus Hall on the SRJC campus.

● **TRI-VALLEY**
 Mixed Doubles Tennis Tournament, Cal State Hayward, sponsored by Tri-Valley JACL, Oct. 13. Info and application form: (415) 846-4165

● **WEST LOS ANGELES**
 A workshop for high school and college youth on careers in social work will be held on Saturday, Oct. 13, 12 noon to 4 p.m. at Westside YMCA Conference Room, corner of La Grange and Sawtelle, sponsored by WLA JACL, the first of seven workshops it will offer. The workshop is free, but participants are required to pre-register and limited to 12 youths. Call Glenn Omatsu, (213) 473-3015.

UCLA Admissions. Analysis and advice from Prof. Don Nakanishi, director Asian American Studies Center. Tuesday, Sept. 25, 7:30 p.m., WLA Buddhist Church corner of La Grange and Corinth, free to public.

● **WEST VALLEY**
 20th Anniversary Celebration Dinner-Dance, Saturday, Oct. 20. No host cocktail hour: 6 - 7 p.m. Price \$30 per person. Reservations—mail check to Nancy Nakamura, 20831 Meadow Oak Way, Saratoga, CA 95070, deadline: Oct. 1. Info call: Doris Kasahara (408) 374-6855 or Nancy Nakamura (408) 996-3336. Speaker: Congressman Robert Matsui. Red Lion Inn, San Jose.


● **WHITE RIVER VALLEY**
 The White River Valley JACL is commemorating its 60th Anniversary on Sat. Sept. 15, at a pot-luck held at the Senior Center in Auburn, WA from 1 - 4 p.m. All members 75 years and older will be recognized, and all former presidents will be honored. They will be coming from Tokyo, Ontario, Ore., and Seattle, as well as from the local community. Cherry Kinoshita will be the featured speaker, and Michelle Cullen will be a soloist. The Pacific Northwest chapter and friends in the community are encouraged to attend. Info: Dan and Grace Hironaka (206) 852-5076.

Items publicizing JACL events should be typewritten (double-spaced) or legibly hand-printed and mailed at least THREE WEEKS IN ADVANCE to the P.C. office. Please include contact phone numbers, addresses, etc.

PC Advertisers Look Forward to Serving You


Kimura PHOTOMART
 Cameras & Photographic Supplies
 316 E. 2nd St., Los Angeles, CA 90012
 (213) 622-3968

TRIA COMPLETE PROFESSIONAL REAL ESTATE SERVICES
ERNEST K. ABE
 REALTORS (916) 428-2000 ext. 207
 Residential ■ Commercial ■ Land ■ Relocation
 7375 PARK CITY DRIVE, SACRAMENTO, CA 95831


Japanese American Travel Club
 ENDORSED BY THE NATIONAL JACL
 3131 Camino del Rio North, #1080, San Diego, CA 92108
TOURS AND CRUISES
 Elaine Sugimoto, Managing Director; Sami Kushida, Sales (619) 282-3581
 Toll-Free U.S. (800) 877-8777, ext. 215; Hrs: 8-5, M/F; Fax: (619) 283-3131!

JAPAN
JAPAN DISCOVERY TOUR . FROM \$1460.00
 PACKAGE INCLUDES:
 * Roundtrip air on ALL NIPPON AIRWAYS from Los Angeles
 * 6 nights accommodations at the ANA TOKYO HOTEL
 * Half day Tokyo City Tour
 * Roundtrip airport/hotel transfers
AVAILABLE EXTENSIONS:
 * INLAND SEA TOUR - KYOTO, HIROSHIMA, TOMONOURA, KURASHIKI, OKAYAMA & OSAKA
 * TRANS-KYUSHU TOUR - FUKUOKA, BEPPU, MT. ASO, KUMAMOTO, NAGASAKI & KYOTO
 * SAPPORO & KYOTO

FALL FOLIAGE TOURS
Autumn in New England From \$1,055
 7 Days / 6 Nights, Depart from New York and visit Lake George, Lake Placid, New Hampshire Mountains, the Rocky Coast of Maine, Boston, Lexington & Concord and Bennington and Stockbridge. Airfare is additional.
 Departures: Daily from Sept. 10 - Oct. 20, 1990.
Grand Autumn New England From \$1,725
 11 Days / 10 Nights, Depart from New York and visit Lake George, Lake Placid, Adirondacks, Lake Champlain, Plymouth, Woodstock, Vermont, Mt. Washington, Maine's Rocky Coast, Gloucester, Salem, Boston, Plymouth and Mystic Seaport. Airfare is additional.
 Departures: Daily from Sept. 3 - Oct. 20, 1990.