

THE PACIFIC CITIZEN

Established 1929

National Publication of the Japanese American Citizens League

(75¢ Postpaid U.S.) Newsstand: 25 Cents

#2,595

Vol. 111 No. 14

ISSN: 0030-8579

941 East 3rd St., Suite 200, Los Angeles, CA 90013

Friday, November 2, 1990

Redress Fully Funded; Immigration, Vietnamese Fishing Bills Are Passed

From the Washington JACL Office
WASHINGTON—In the final hours of the 101st Congress, the budget compromise was finally cut and passed with the President's agreement already secured.

The budget ensured that the full \$500 million in redress entitlement funds will be available. The Congress also approved a compromise legal immigration bill that retains most of the current law's benefits for Asian and Pacific Americans and a rider protecting the rights of Vietnamese American fishermen in California.

The ORA has not announced the schedule for release of the additional distribution, since prior to the approval of the budget, funding could have been affected by the Gramm-Rudman deficit reduction.

The immigration bill was passed Oct. 27 that reflected JACL's desire for an immediate floor to protect family unification members. The pilot national I.D. card program, which JACL had questioned, was not included.

While the fishing bill contains a 10-year "sunset" provision, JACL hoped that the affected fishermen will have time to secure citizenship during the 10-year period.

Initial Conference Report

The initial reports of the Conference agreement had indicated immediate relative numbers were pitted against family preference allotments without protection of an immediately effective "floor" to assure those preferences which are heavily used by Asian Americans in uniting families, the Washington JACL Office explained.

The final report, thanks to efforts by Reps. Howard Berman (D-Calif.) and Hamilton Fish (R-N.Y.), reflects a change that implements the floor immediately. It is "far better than the original compromise as far as Asian and Pacific Americans are concerned," Washington JACL Representative Paul Igasaki said.

The compromise provides a "floor" for family categories of 226,000, an increase of 10,000 over current numbers, that would not kick in until 1996. Because the compromise would, for the first time, limit immediate relative numbers by including them within the "cap," greater growth in these numbers would reduce family preference visas before the "floor" became effective. It is projected that family preference numbers would be reduced to 14,000 less than currently allowed by 1993 and to 31,000 less than current numbers by 1994.

Immigration Reform Efforts

JACL and other Asian American organizations have worked for a progressive immigration reform proposal that would protect family unity as the cornerstone of American immigration policy.

JACL originally supported H.R. 672, sponsored by Rep. Berman (D-Calif.), then joined in supporting H.R. 4300, a compromise bill that was eventually passed Oct. 3 by the House of Representatives. The difficulties arose when H.R. 4300 was to go to a Conference Committee with the more restrictive Senate bill, S. 358.

"Throughout this process," said Igasaki, "Rep. Berman has been our community's strongest advocate, striving for a compromise that would protect the principle of family unity in immigration."

JACL's Historic Concerns

While immigration from Japan has

slowed to a trickle in recent years, JACL has maintained an active interest in immigration policy. The JACL was founded in 1929 in large part to push for fairer immigration and naturalization policies for Asian Americans. Having been the only national Asian American organization on hand to fight for fairer laws in 1952 and 1965, the last times legal immigration policies were reviewed, the JACL has a stake in seeing that current reforms treat Asian interests fairly, Igasaki explained.

Immigration laws have historically limited or banned Asian immigration on the basis of race. The 1965 reforms were the first time that Asian were treated equally at America's door. The resulting influx of Asians, particularly those seeking to bring separated families together, continues and has led some to seek to restrict Asian entrants in much the same way as it has been done in the past.

Since 1965, Asian Americans have utilized current law to bring family members into the United States. At this time, spouses and minor children of U.S. citizens can come in without regard to any numerical limitations. The most heavily used preference category for Asian immigrants is the Fifth Preference, which applies to adult brothers and sisters of U.S. citizens. The proposed compromise would, until 1996, count spouses and minor children of citizens against the "cap" thereby reducing numbers available for Fifth and other preferences.

"Families are not limited to the nuclear unit in Asian American culture," said Igasaki, "Adult brothers and sisters and adult sons and daughters are every bit as much a part of the Asian family unit as minor children and siblings. This extended family provides social support and serves as a bulwark against the myriad societal problems that all Americans face."

Senate Sustains President's Veto of Civil Rights Bill

WASHINGTON—The Senate failed to override by only one vote, 66-34, President Bush's veto of the Civil Rights Act of 1990 last week (Oct. 24). The bill was JACL's highest legislative priority in the 101st Congress.

Because the Senate has sustained the veto, the bill is "dead," and the House of Representatives will not vote on an override.

"We are very disappointed," said Paul Igasaki, JACL Washington Representative. "This was a good civil rights bill that was necessary to provide basic options to those facing hiring and on-the-job discrimination. I think women and those facing bias due to their religion or nationality will be hurt most. Hopefully, this will not lead to an increase in employers using unnecessary height requirements to keep Asian Americans out of certain positions."

"While this is a setback, the strong Congressional and grassroots support for this bill provides a basis for trying again next year with the 102nd Congress. The people of the United States do want a 'kinder and gentler' America even if our President does not."

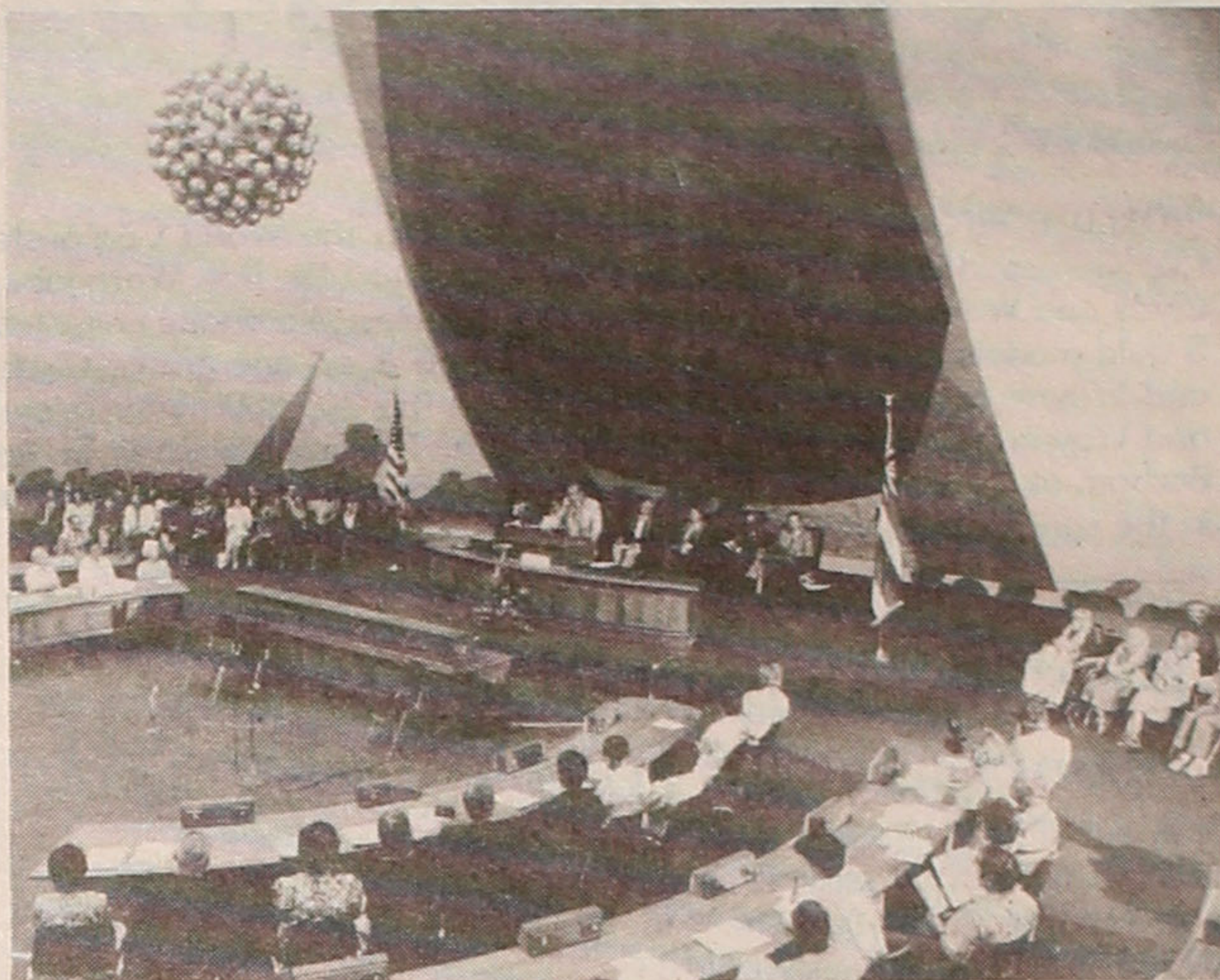


Photo by Allan Beekman

REDRESS PRESENTATION IN HAWAII—At Hawaii's modern State Capitol, Governor John Waihee addresses redress audience on Oct. 15. The elderly recipients are seated at the right, while local civic dignitaries are in the middle.

UC BERKELEY'S 'DIVERSITY PROJECT':

No Single Ethnic, Racial Group on Campus Comprises a Majority

BERKELEY, Calif.—UC Berkeley's "Diversity Project," which involved a poll of 230 students conducted by 23 campus social scientists over a 16-month period, is under review by Chang-Lin Tien, the university's new chancellor.

The *New York Times* last Oct. 3 reported the results of the poll indicated the campus was "Balkanized" or comprised of many splinter groups, that no single ethnic or racial group constitutes a majority.

The study further indicated there is far less mingling on campus than its rich ethnic and racial diversity might suggest.

Some students said ethnic groupings are more pronounced in the first two years of undergraduate life and that in later years, more friendships are formed across racial and ethnic lines. Other students said whatever racial barriers exist are slight and understandable.

Many who came to Berkeley in

Arlo Smith Hails Redress Apology as 'Historic,' Korematsu Comments

SAN FRANCISCO—Arlo Smith, San Francisco district attorney, called it a "very historic occasion," the week the U.S. government began to send its official apology and redress compensation to former Japanese American internees.

"This sort of apology by our government is unprecedented. While the monetary award to each former internee is more symbolic, the apology from the U.S. government is very important. As a veteran of the Occupation army, I am proud of what my government has done today (Oct. 9)," declared Smith, a candidate for state attorney general.

Fred Korematsu, who challenged the validity of internment, added: "The U.S. government is finally making amends for ignoring the rights of Japanese Americans in 1942. My faith in the Constitution is now fully restored."

"As a congressman, Dan Lungren worked hard to oppose redress and it indicates to me that he does not believe in civil rights. He does not deserve to hold the office of attorney general," Korematsu said. "Arlo Smith is much more qualified and he has my enthusiastic support."

search of diversity expressed dismay about the atmosphere in the cafeteria to chatting between classes acquires a racial tone. "Watch the students walk by," a 20-year-old sophomore said. "It's usually Asian students walking and talking with Asian students and whites with whites."

The report also observed:
• "All students have to figure out whom they are going to hang out with, but on this campus, it becomes a racial question."
• "It's kind of awkward to go up to someone who's not of your race and maybe doesn't speak your language, and say, 'Hey, would you like to associate with me on a day-to-day basis?'"

Researchers also found tension and misunderstanding among ethnic groups on campus stemmed from competitive admissions process. With a goal of someday reflecting California's diverse population in its student body, UC Berkeley has nearly attained this goal and in the process, the percentage of white students dropped from 66% in 1980 to less than 45% in 1989.

Better understanding of Berkeley's admission policy would help breakdown the racial and ethnic barriers, the report suggested.

Troy Duster, the sociologist who directed the project, said the university should emphasize that in today's global economy, graduates who go on to become leaders must be capable of working with people of many backgrounds.

The report recommended freshman seminars be established to meet monthly to discuss integration, giving faculty and students a summary of Berkeley's admission policy and encourage professors to force random groups of students to tackle problems together.

Welcome Reception Set for Tokeshi Nov. 8

LOS ANGELES—A welcome reception and open house for the recently appointed PSWDC regional director Jimmy Tokeshi will be held on Thursday, Nov. 8, 6-8 p.m., at the JACCC, 244 S. San Pedro St.

"His strong ties to JACL and Asian American organizations shows his true commitment to the community and we are fortunate to have him on board," a JACL spokesperson announced.

Redress Eligibility Process for Nisei Veterans Simplified

WASHINGTON—The ORA procedures for U.S. Military Service members has been superseded by a 3-page version that had been previously distributed by ORA, it was announced Oct. 22.

The revised version is better in two ways, the Washington JACL Office explained.

(1) In Step 2, it clearly informs individuals that they may be eligible for one or BOTH categories of eligibility—deprivation of liberty and/or loss of property.

(2) In Step 3, it eliminates the proof of birth requirement.

The revised text of the Eligibility Process for members of the U.S. armed forces follows:

The Civil Liberties Act of 1988

Eligibility Process For Members of the United States Armed Forces Introduction

Individuals of Japanese ancestry who were on active duty in the U.S. Armed Forces at the time of mandatory evacuation during World War II may be eligible for a redress payment, even if they were not interned. To be eligible, a person must have been prohibited from visiting family members who were interned, or have lost property because they were unable to return to their domicile in a prohibited zone to safeguard their possessions.

Because the requirements for military recipients is slightly different from the eligibility required for others, the verification process for veterans is also different. This process is outlined in this handout.

STEP 1:

Individuals who served in the military and lost property or were deprived liberty should send a letter to the Office of Redress Administration at the following address:

Office of Redress Administration,
Post Office Box 66260,
Washington, DC 20035-6260.

The letter should include: the individual's name; current address; date of birth; telephone number; dates of military service.

ORA must process all cases in age order, beginning with the oldest. After a letter from a veteran is received, that case is placed in age order with all other cases awaiting review. Thus, individuals who are younger than the recipients currently being processed by ORA will not receive a response from ORA until review of cases in their age group is begun.

STEP 2:

Each individual will receive from ORA a special verification letter for military cases. This letter requests that the recipient

Continued on Page 5

Blue Cross Display Ad Offends JACL

SAN FRANCISCO—JACL last week expressed its concern over the copy of a full-page display ad appearing the week of Oct. 15 for Blue Cross of California, calling it "highly inappropriate and insensitive."

The ad which JACL regarded as offensive declared: "The biggest threat to the American economy may have 4 wheels, but it isn't Japanese." (The four wheels refers to the hospital bed, which is illustrated over 80% of the space).

Joy K. Morimoto, NCWNP regional director, in her letter Oct. 24 to the Blue Cross chairman Leonard Schaeffer, hoped their ad is either deleted in part or in its entirety "and show(s) better judgment in future advertising decisions."

JACL is concerned about the increase of Japan-bashing taking place in the media because "all too often anti-Asian sentiment, whether subtle or blatant, can translate into acts of violence against Asians," she explained.

NEWS IN BRIEF

1990-91 Tournament of Roses Court Diverse

PASADENA, Calif. — The 1990-1991 Tournament of Roses court is one of the most ethnically diverse ever in history with three princesses of Asian descent—Japanese (Andrea Sae Uyeda), Chinese (Mei-Lin Kong), Indian (Harini Reddy) and one Black princess (Dawn Christine Gray). Andrea, 16, of Pasadena is the daughter of Robert/Blossom Uyeda.

Onizuka Memorial Dedicated in Little Tokyo

LOS ANGELES — Two U.S. astronauts, Loren Shriver and Gary Payton, Mrs. Loma Onizuka, and three Japanese astronauts-to-be, Chiaki Mukai, Takao Doi and Mamoru Mouri, gathered under bright blue skies Oct. 19 to dedicate the Onizuka Challenger Space Shuttle Memorial—a one-tenth size replica of the Challenger atop a black granite base on Astronaut E.S. Onizuka Street in Little Tokyo. Merchants and friends raised the funds for the memorial, the story being related on four plaques around the base.

Sacramento Area JACLers to Fete Kondo

SACRAMENTO—Four Sacramento Valley JACL chapters—Marysville, Placer County, Florin and Sacramento—will host a "Salute George Kondo" dinner on Tuesday, Nov. 13, 6 p.m., at the Red Lion Hotel here.

The Sacramento JACL will also install its 1991 chapter officers. Reservation and information: JACL Office (916) 447-0231; tickets \$20 per person.

Dale Minami Panelist on Minority Forum in Texas

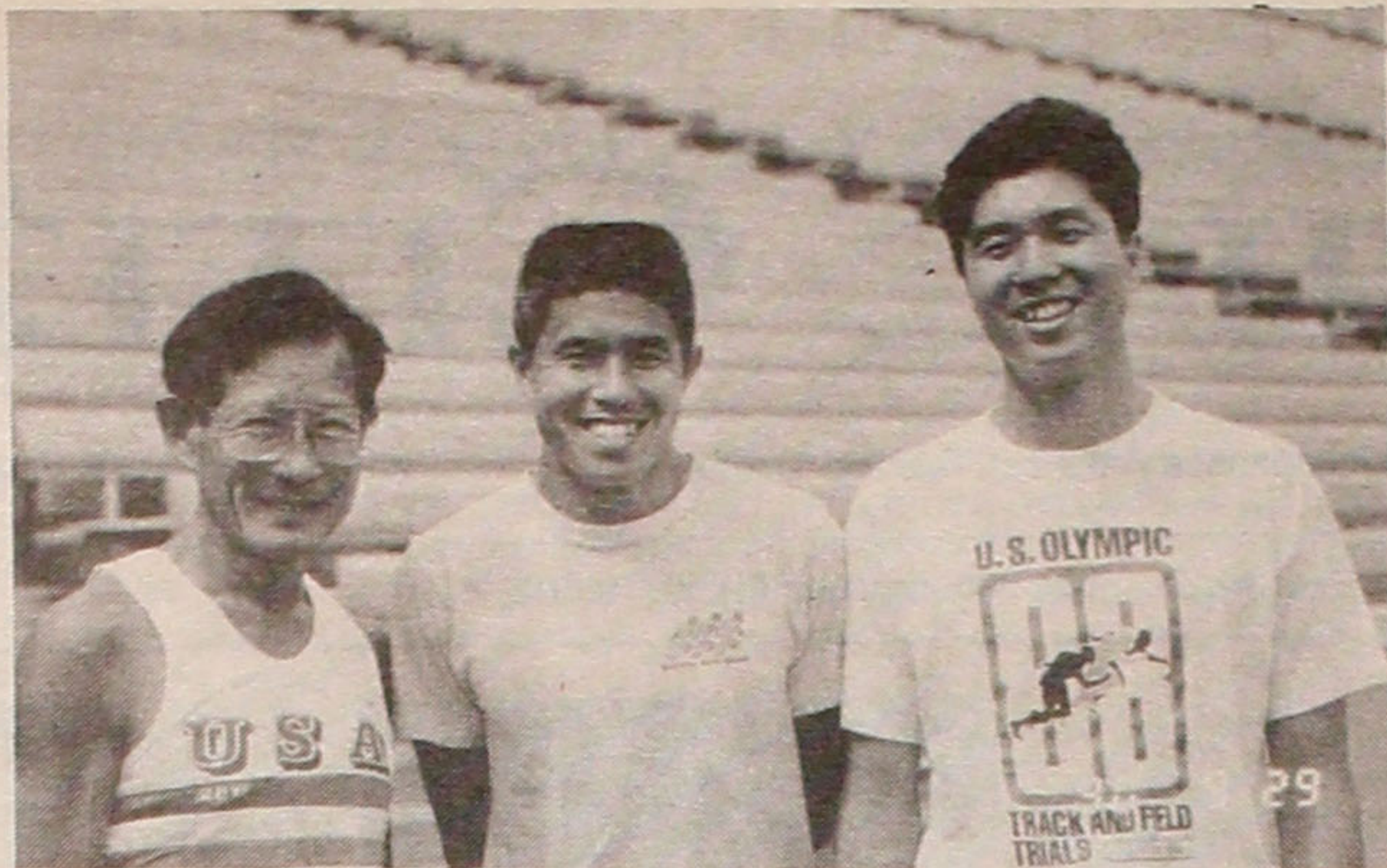
HOUSTON — In response to the growing incidence of hostility and violence between minority groups, Asian Pacific American, African American and Hispanic leaders, including Roy Innes of CORE, Rep. Craig Washington (D-Tex.) of Houston, and San Francisco civil rights attorney Dale Minami, have agreed to participate on a panel to examine both roots of the violence and efforts to resolve these conflicts.

The panel is scheduled Nov. 10, at the South Texas School of Law, during the second annual convention of the National Asian Pacific American Bar Association at Four Seasons Hotel Nov. 9-11.

Info: Harry Gee (713) 781-0071, or Ted Wu (713) 623-6700.

San Jose Elections

SAN JOSE, Calif.—The San Jose JACL election night potluck dinner will be held Nov. 9, 6:30 p.m., at the Issei Memorial Bldg. Members with surnames from A - K are expected to bring a main dish for six persons; while from L - Z can bring a salad serving six. Chapter is providing the dessert, beverage, plates and plasticware. And call the JACL Office (408) 295-1250 of the number who will be in your party.



WORLD CORPORATE CUP GAMES—Winners in the World Corporate Cup Games in Honolulu Oct. 6-13 are (from left) Dr. Bob Watanabe, Clyde and Wayne Matsumura, all of Los Angeles. Watanabe collected 5 gold medals in the sprint events for the 60 & up age group; Clyde and Wayne each garnered 1 gold medal in the 2x1,600 meter relays and Wayne also won the quarter-marathon. The same week in Santa Barbara at the western regional Masters, Watanabe won 7 gold medals in the sprints, hurdles and relays.

1991 APPLICATIONS AVAILABLE:

Japan Exchange & Teaching (JET) Program

LOS ANGELES — Applications are available for the 1991 Japan Exchange and Teaching (JET) Program, conducted under the co-sponsorship of local governments in Japan, the Ministry of Foreign Affairs, the Ministry of Education, and the Ministry of Home Affairs.

There are two areas of employment in the program: Area I concerns assignments of prefectural and city offices to assist with various international activities and English language supervision; and Area II, which concerns assignments to schools and companies as assistants to Japanese teachers of English. Length of employment will be one year commencing Aug. 1, 1991.

Successful applicants should have U.S. citizenship and meet all other eligibility requirements specifically stated in the 1991 Japan Exchange and Teaching Program brochure. Deadline for applications is Dec.

Centenarians in Japan

Women centenarians in Japan today outnumber the men 6 to 1: Of the 2,618 total, 79.4% were women.

20. For details contact:
The Consulate General of Japan, 250 E. First St., Suite 1507, Los Angeles, CA 90012. (213) 624-8305 ask for the JET office.

Asian Scavenger Sparks Hot Debate in Wisconsin

MADISON, Wis.—Director of a Green Bay homeless shelter criticized the arrest of Tru Vang, a 56-year-old Laotian refugee cited on charges last August of violating a new anti-scavenging ordinance in Madison.

Director Karina O'Malley said, "I don't see why the city has to pit itself against the poor. This is a way for them to eke out a living without panhandling."

The city attorney's office dropped charges on Sept. 28 after Mayor Paul Soglin and others decried her arrest as a misapplication of the ordinance. Wisconsin has a state law requiring communities to recycle aluminum, paper, glass and other materials by 1995.

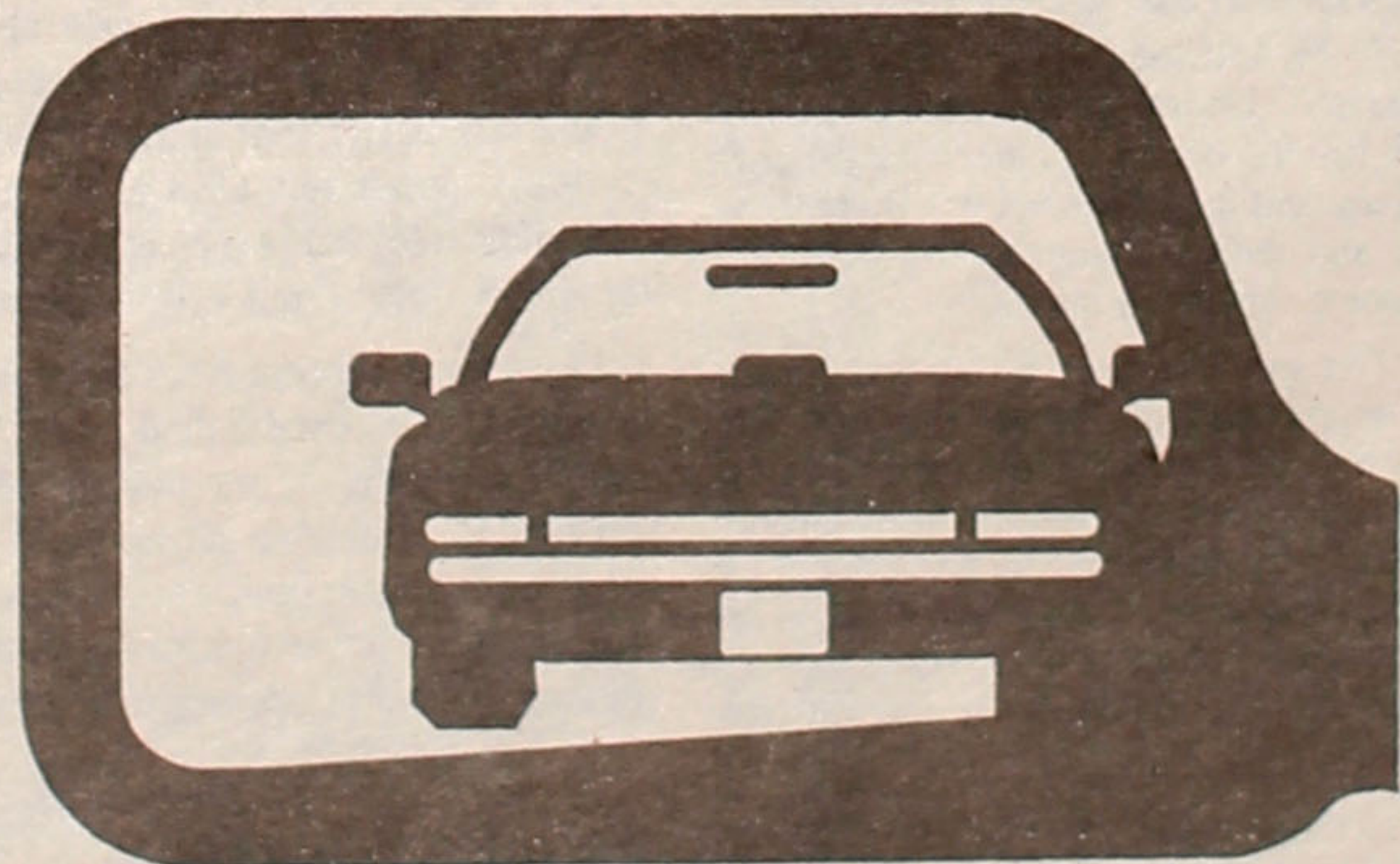


JAPANESE COMMUNITY HEALTH, INC.
420 E. Third Street, #607, Los Angeles, California 90013
Tel: (213) 626-6071 Fax: (213) 620-0809

The Japanese Community Health, Incorporated (JCHI), gratefully acknowledge and thank the many organizations and individuals for their support and participation in our Second Annual Recognition Dinner of October 6, 1990 at The Biltmore. We thank you for a very successful event honoring Mary Yone Akita, R.N., Doctors James M. Goto, George K. Kambara and Robert T. Obi.

The Dinner Committee
Toshi Yamamoto
Chairperson

9.9% NEW CAR APR LOANS



Up to 60 months financing / Simple interest
No pre-payment penalties / Free loan insurance

Nat'l JACL Credit Union

PO Box 1721 / Salt Lake City, Utah 84110 / 801 355-8040
Toll Free 800 544-8828 Outside of Utah

Allow 6 weeks to report Address Change with label on front page IF YOU ARE MOVING / WISH TO SUBSCRIBE

Effective Date: _____

Please send the Pacific Citizen for:

1-Yr: \$25 2-Yrs: \$48 3-Yrs: \$71

TO-Name: _____

Address: _____

City, State ZIP: _____

All subscriptions payable in advance. Foreign: US\$13.00 extra per year.
Checks payable to: Pacific Citizen, 941 E. 3rd St., Los Angeles, CA 90013

EXPIRATION NOTICE: If the last four digits on the top line of address label reads 0890, the 60-day grace period ends with the last issue for October, 1990. If JACL membership has been renewed and the paper stops, please notify the P.C. Circulation Office immediately.

OCT 90: TN443, cr129

Visual Communications Commemorating Its 20th Anniversary at Nov. 17 Gala

LOS ANGELES — Visual Communications, the oldest Asian Pacific media arts organization in the United States, commemorates its 20th year with a unique video and musical celebration on Saturday, Nov. 17, 8 p.m. at the Japan America Theatre.

As a fundraiser, it will feature a production directed by Academy Award-nominated filmmaker Arthur Dong, accompanied by musicians from the celebrated "Hiroshima," Dan Kuramoto, June Kuramoto, Johnny Mori and Danny Yamamoto.

Founded in 1970, V.C. strives for the preservation and presentation of the history, culture and experiences of Asian Pacifics here and abroad. Its photographic archives contain 300,000 images used by historians, researchers and filmmakers.

Active since 1984, V.C.'s filmmakers development and fellowship program has produced 35 productions involving the work of literally hundreds of artists and technicians.

After-Hour Reception

The hour program will be followed by a cake and champagne reception. Proceeds will be used to match challenge grants from the California Community Foundation and from government agencies. Tickets are

\$250 for corporate individuals; \$100 for community and non-profit individuals, \$150 per couple.

On the celebration committee are:

Douglas Aihara and Akemi Kikumura, co-chair; Michael Balaing, Marissa Castro, Patty Chang, Alex Chiu, J.D. Hokoyama and Patty Kinaga; major sponsors—California Community Foundation, KSCI-TV Channel 18, Anheuser-Busch Companies, Manabi Hirasaki of Manabi Farms, Inc., Toyota Motor Sales, U.S.A.

Maxine Hong Kingston's 'Talking Story' on PBS-TV

NEW YORK — Growing up in Stockton, California, in the 1940s and 50s, Maxine Hong Kingston heard incredible tales of ghosts, demons, war, famine, and adventure from her Chinese immigrant mother, Brave Orchid.

This powerful and original storyteller is now the subject of an one-hour special, "Maxine Hong Kingston: Talking Story," narrated by Tony Award-winning actor B.D. Wong ("M. Butterfly"), will air Nov. 26, from 10-11 p.m. on most PBS-TV stations (check local listings.)

Available Exclusively To JACL
Individual Members And Group

The JACL-BLUE SHIELD Health Plan



Quality Blue Shield Cover...ge
At Special Rates For JACL Members

- Your Choice Of Doctors And Hospitals
- Wide Range Of Benefits Including Professional Services, Hospitalization, And Dental Coverage
- Includes HEALTHTRACSM — a personal wellness program to help keep you healthy
- Over 36,000 Physician Members To Help You Save On Out-Of-Pocket Expenses
- Up To \$2,000,000 in Lifetime Maximum Benefits
- Worldwide Coverage
- A JACL Endorsed Health Plan Backed by Nearly 50 Years Of Blue Shield Experience

JACL members 18 and over may apply to enroll in the Blue Shield of California Group Health Plan sponsored by JACL. Applicants and dependents under age 65 must submit a statement of health acceptable to Blue Shield before coverage becomes effective. Members age 65 and over, covered under Medicare parts A and B, may join without a health statement.

For More Information, Write Or Call Today:
(415) 931-6633

Yes! I want to know more about the JACL-Blue Shield of California Group Health Plan.

- I am a member of _____ chapter.
 I am not a member of JACL. Please send me membership information. I understand that JACL membership is required to obtain this coverage.

Name _____ Age _____
Address _____
City/State/Zip _____
Phone (____) _____ Work Home

Send To: Frances Morioka, Administrator
JACL-Blue Shield of California Group Health Trust
1765 Sutter Street, San Francisco, California 94115

Los Angeles Japanese Casualty Insurance Assn.

COMPLETE INSURANCE PROTECTION

Aihara Insurance Agency, Inc.
250 E. 1st St., Los Angeles 90012
Suite 700 626-9625

Anson T. Fujioka Insurance
321 E. 2nd St., Los Angeles 90012
Suite 500 626-4393

Funakoshi Ins. Agency, Inc.
200 S. San Pedro, Los Angeles 90012
Suite 300 626-5275

Ito Insurance Agency, Inc.
Howe Bldg, 180 S. Lake Ave., #205, Pasadena, 9101
(818) 795-7059, (213) 681-4411 L.A.

Kagawa Insurance Agency Inc.
360 E. 2nd St., Los Angeles 90012
Suite 302 628-1800

Kamiya Ins. Agency, Inc.
120 S. San Pedro, Los Angeles 90012
Suite 410 626-8135

The J. Morey Company, Inc.
11080 Artesia Bl, Suite F, Cerritos, CA 90701
(213)924-3494/(714)952-2154/(408)280-5551

Steve Nakaji Insurance
11954 Washington Pl.
Los Angeles 90066 391-5931

Ogino-Aizumi Ins. Agency
1818 W. Beverly Bl, Montebello, 90640
Suite 210 (818)571-6911/(213)728-7488 L.A.

Ota Insurance Agency
321 E. 2nd St., Los Angeles, CA 90012
Suite 604 617-2057

**T. Roy Iwami & Associates
Quality Ins. Services, Inc.**
3255 Wilshire Blvd., Los Angeles 90010
Suite 630 382-2255

Sato Insurance Agency
366 E. 1st St., Los Angeles 90012
626-5861 629-1425

Tsuneishi Ins. Agency, Inc.
327 E. 2nd St., Los Angeles 90012
Suite 221 628-1365

AHT Insurance Assoc., Inc.
dba: Wada Asato Associates, Inc.
16500 S. Western Ave, Gardena, CA 90247
Suite 200 (213) 516-0110

THE PACIFIC CITIZEN

941 E. 3rd St., Rm. 200,
Los Angeles, CA 90013-1896
(213) 626-6936, Fax: 626-8213,
Editorial: 626-3004
Circulation: 626-0047

EDITORIAL - BUSINESS STAFF:
Editor-in-Chief: (Vacant)
Business Manager: Mark T. Saito
Senior Editor: Harry K. Honda
Business: Andy Enomoto, Jennifer Choe
Subscription Circulation:
Tomi Hoshizaki, Marjorie Ishii
Production: Mary Imon, Frank M. Imon

NEWS / AD DEADLINE
Friday Before Date of Issue

\$7 Million Raised for Museum's Phase One Campaign Goal

LOS ANGELES—The Japanese American National Museum is approaching the 70% mark in the first phase of its fundraising effort, with nearly \$7 million in contributions and pledges received to date, it was announced by William G. Ouchi, campaign co-chairman. To reach its Phase I goal of \$10.2 million on schedule, the Museum must raise an additional \$3 million by year-end.

The Museum's \$24.1 million campaign is divided into two phases: Phase I requires \$10.2 million to create a permanent 33,000 square foot home through renovation of the old Nishi Hongwanji Buddhist Temple in Little Tokyo.

Phase II will raise \$13.9 million to expand the Museum facilities by 65,000 square feet to be located to the north of the first phase building, and will house the Museum's complete collection, public programs, and expanded exhibitions.

In Southern California, \$6,762,500 has been raised since the start of the campaign. George Aratani, member of the Museum's National Campaign Steering Committee, said, "It is important that Japanese Americans in Southern California lead the way in building the Museum. . . . We are fortunate that this national institution will be housed in Southern California. It will be a place where the individual and collective histories of Japanese Americans including the new generation of Issei will be documented for future generations of all Americans."



SAN GABRIEL VILLAGE
235 W. Fairview Ave., San Gabriel, CA 91776
(213) 283-5685, (818) 289-5674

LITTLE TOKYO
114 N. San Pedro St., Los Angeles, CA 90012
(213) 626-5681, 626-5673

Asian-Majority Assembly District in Los Angeles Seen as Possibility

LOS ANGELES — Asian Pacific Americans stand a good chance to gain an Asian-majority State Assembly district if they are prepared to fight for one in the reapportionment process during 1991-92, a specialist in population projection told *Asian Week*.

Paul Ong, professor of architecture and urban planning at UCLA, identified three potential areas for such a district in Los Angeles county.

The first "pocket," the West San Gabriel Valley region encompasses:

Monterey Park, Alhambra, San Marino, Arcadia, Montebello, San Gabriel, Rosemead, El Monte, South El Monte, etc.

It is now one-third Asian Pacifics, but that community is projected to reach one-half of the population by the end of the decade. [There are hundreds of Latino political, business community leaders also in the same area who are studying reapportionment for electoral seats next year.]

Other "pockets" include the mid-city area linking Koreatown and Chinatown, currently between one-quarter to one-third Asian Pacifics but expected to reach over 40% of the population in 10 years; and the south end of the county through:

Gardena, Torrance, Hawthorne, Carson, Long Beach and San Pedro.

The source of his estimates include the current demographic data calculated by the county from birth statistics and school enrollment; and immigration data from 1983 to 1987, said Ong. But he will also reconcile his estimates with census figures when they become available early next year.

Ong is a member of the Coalition of Asian Pacific Americans for Fair Reapportionment, whose two dozen members have been meeting monthly in the city for about a year.

Although statistically possible, whether an Asian-majority Assembly district becomes a reality depends on a number of factors, pointed out Don Nakanishi, director of the UCLA Asian American Studies Center, a member of the coalition.

"We need to know what Asian Americans want. Do people prefer to be put into one district, or do they want to be divided into three or four districts, making it harder to get (an Asian American) elected?" questioned Nakanishi.

The projected addition of eight congressional seats for California also raises the possibility of gaining an Asian-majority congressional district.

To that end, questionnaires on reapportionment were sent to about 200 individuals

last July. The early two dozen responses indicated that although most prefer an Asian-majority district, "many also said they are not sure," said Ong.

Even if most Asian Pacifics are interested in being reapportioned into an Asian-majority district, a great deal of work remains to be done to fruition, said Stewart Kwoh, executive director of the Asian Pacific American Legal Center. "Nobody is going to just hand us an Asian American district. . . . Somebody will have to go in with specific plans on how the lines will be drawn, and what compromises to make in terms of impact to other ethnic community or electoral interests."

Ong's findings on the feasibility of an Asian-majority Assembly district will be presented at a mid-November hearing sponsored by Sen. Art Torres, who is a member of the state Senate Elections and Reapportionment Committee. Interested parties may call Tania Azores, (213) 206-8889, about the Coalition of Asian Pacific Americans for Fair Reapportionment or the survey.

ASIAN AMERICANS IN POLITICS; Two Asians Wins in Nevada Primaries

CARSON CITY, Nev. — Cheryl Lau, an Asian American, won the Republican nomination for Secretary of State in the Sept. 4 primary election in Nevada.

Bob Wong ran unopposed for the open 15th District Assembly seat.

In Washington, Republican National Committee Co-Chairman Jeanie Austin said the candidates are examples of Asian Americans making a difference and participating in this country's political process. "Cheryl Lau and Bob Wong have outstanding records and they will make fine representatives. Cheryl, Bob and all the other Asian American candidates are excellent role models for their community as they step forward as political leaders," she said.

Lau is the deputy attorney general for the Nevada Department of Motor Vehicles, Public Safety Division and the Nevada Highway Patrol.

Wong is the assistant general manager for the Southern Regional Office of the State Industrial Insurance System and has

been associated with industrial insurance for over eight years.

The two Nevadans add to the growing list of Republican Asian American candidates in 1990. Other Asian American candidates include:

Rep. Pat Saiki for U.S. Senate in Hawaii, Eunice Sato of Long Beach for U.S. Representative in California, Matt Fong for State Controller in California, and Roger Fong for Sacramento County Assessor.

Congress Approves Mineta Minority Health Bill

WASHINGTON—Congress passed on Oct. 17 and sent to the White House a comprehensive Minority Health Improvement Act (HR 5702), it was announced by Rep. Norman Mineta (D-Calif.).

The legislation, authored by Rep. Henry Waxman (D-Calif.) and co-sponsored by Mineta, includes provisions of the Asian-Pacific Islander Health Improvement Act which calls for bilingual health care and improved data collection.

Tell The Advertiser Where You Saw Their Ads

TRIA COMPLETE PROFESSIONAL REAL ESTATE SERVICES
REALTORS
ERNEST K. ABE
(916) 428-2000 ext. 207
Residential ■ Commercial ■ Land ■ Relocation
7375 PARK CITY DRIVE, SACRAMENTO, CA 95831

PAID POLITICAL ADVERTISEMENT

PAID POLITICAL ADVERTISEMENT

Re-Elect



RALPH C.

DILLS

**OUR SENATOR
30TH DISTRICT**

VOTE

TUESDAY, NOVEMBER 6

Paid for by Senator Ralph Dills Committee ID# 890007



Japanese Phototypesetting

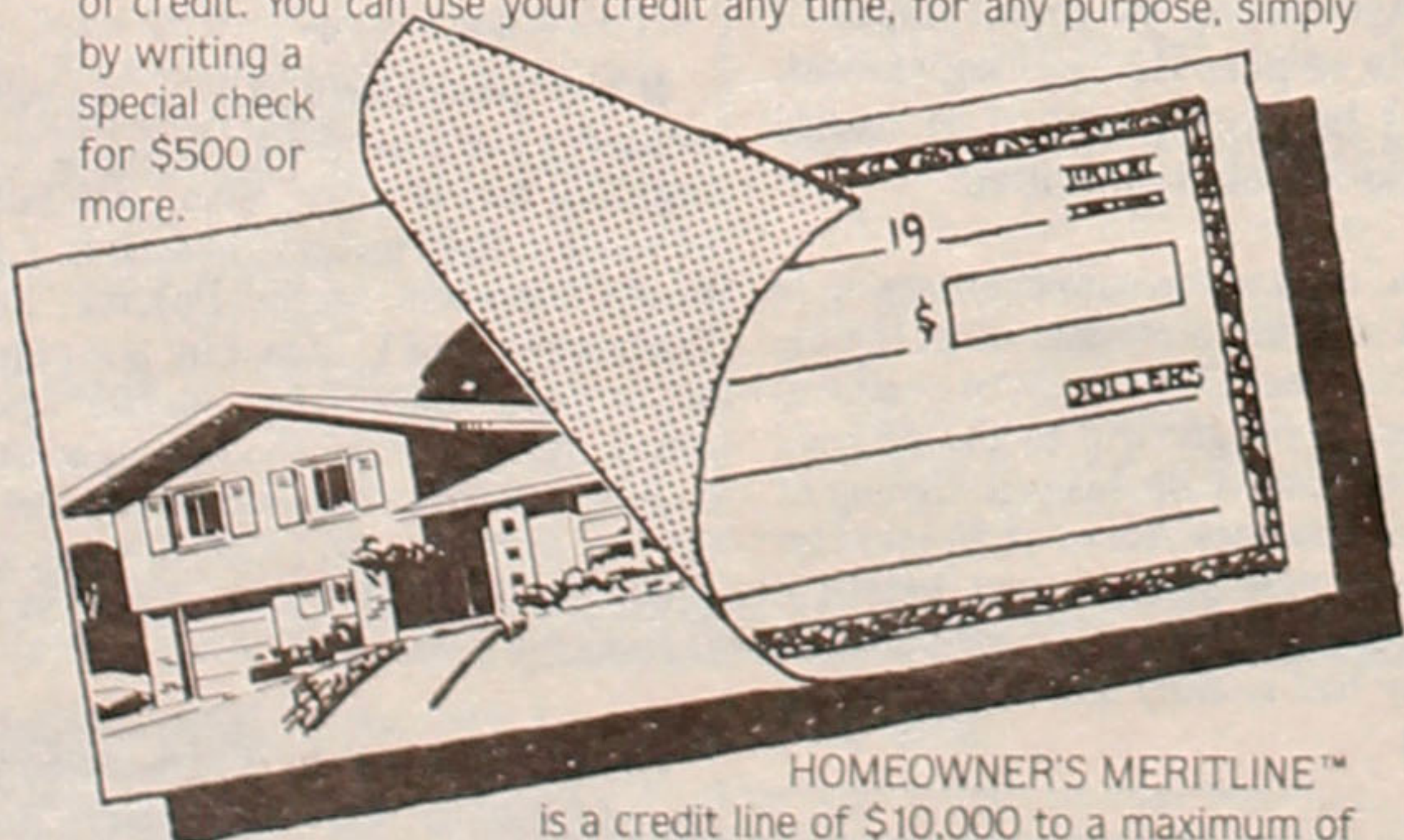
TOYO PRINTING CO.

309 So. San Pedro St., Los Angeles 90013
(213) 626-8153

Union Bank HOMEOWNER'S MERITLINE™

Get the credit you deserve.

Union Bank has a new way to provide you with a pre-approved line of credit. You can use your credit any time, for any purpose, simply by writing a special check for \$500 or more.



HOMEOWNER'S MERITLINE™

is a credit line of \$10,000 to a maximum of \$100,000 secured by the home in which you live.

Your monthly payment will be only the finance charge for the billing period or \$100, whichever is greater.

The finance charge is 2% above the Wall Street Journal prime rate.

Union Bank
Union Bank
Member FDIC



THE PACIFIC CITIZEN

(ISSN: 0030-8579)
 941 E. 3rd St., #200, Los Angeles, CA 90013-1896
 (213) 626-6936, Fax: 626-8213, Editorial: 626-3004

The Pacific Citizen is published by the Japanese American Citizens League, 941 E. 3rd St., #200, Los Angeles, CA 90013-1896, weekly except the first week of the year, biweekly during July and August, and semi-monthly in December. ■ Annual Subscription Rates — JACL Members: \$12.00 of the national dues provide one year on a one-per-household basis. Non-Members: 1 year — \$25, 2 years — \$48, payable in advance. Additional postage per year—Foreign: US\$13. Air mail—U.S., Canada, Mexico: US\$30; Japan/Europe: US\$60.

National Headquarters, 1765 Sutter St., San Francisco, CA 94115, (415) 921-5225

The news and opinions expressed by columnists other than the National President or National Director do not necessarily reflect JACL policy.

Second Class Postage Paid at Los Angeles, Calif.

POSTMASTER: Send Address Change to Pacific Citizen, 941 E. 3rd St., #200, Los Angeles, CA 90013-1896

EDITORIAL OF THE PACIFIC CITIZEN

A More Sensitive Term

Newspapers today make it a policy to avoid words offensive to various segments of the population. If they use "crippled" to describe someone "confined" to a wheelchair, they are likely to receive a letter from some advocacy organization. The letter will point out that "handicapped" is preferable in describing a person who has difficulty getting around, and a person "uses" a wheelchair rather than being confined to it.

By the same token, a "deaf" person is described as "hearing impaired," and one who cannot speak is "mute" rather than "dumb."

Newspapers also try to use the racial designation, when it is pertinent to understanding, preferred by that group. At one time Negro was proper, but that was changed to Black and now some segments seem to prefer African American. Oriental was correct years ago; now the preferred form seems to be Asian American. Some Indians want to be known as Native Americans, but others say they should be called American Indians.

It is not easy to learn who sets these standards. Additionally they seem to vary from place to place. Nonetheless, newspapers seek to avoid offense and do the best they can to satisfy the desires of the diverse elements in their communities. That contributes to greater civility all around.

It also is encouraging to learn that even in Japan, which has been slow to understand the offensive nature of some words, a new sensitivity is emerging. The press has taken to using euphemisms, long practiced in the spoken language.

For example, in newspaper usage "mekura," (blind) is now "me-no-fujiyu" (visually impaired). "Tsumbo" (deaf) is "mimi-no-fujiyuna" (hearing impaired). "Bikko" (lame) is now "ashi-no-fujiyuna" (leg or foot impaired).

Are these small matters? Not if it makes the handicapped feel less patronized about their difficulties and leads to a gentler, kinder society.

MONITOR

"Let's Mourn Our Own Dead . . . I see in your paper of Aug. 7, that the Japanese are mourning those killed at Hiroshima. Maybe they'll have a moment of prayer and bow their heads to those Americans killed on the Bataan Death March; the Chinese killed in Singapore in 1941 because they were tattooed (the Japs thought they were gang members!) . . . And now we dumb gullible, short-memoried Americans buy billions of dollars worth of goods from these brutal, deceitful, bowing and scraping, ever-grinning people."

—George Moore, New Market, Va.
 Letter to the *Daily News Record*

WASHINGTON—The State Department's top East Asia expert said that Japan's financial contribution to the cost of the multinational military force in the gulf is the largest of any nation outside the region (not peanuts). Richard H. Solomon, assistant secretary of state (Sept. 19) for East Asia and the Pacific, said that Japan's pledge of \$4 billion constitutes Tokyo's "fair share" of the overall costs.

Readers wishing to send items to the Monitor should address their submissions to the P.C. Editor.

In The Pacific Citizen 45 Years Ago

SALT LAKE CITY—Asserting its belief that the California Alien Land Law discriminates against the future of American citizens of Japanese ancestry, the national JACL this week announced that it will file a brief as a "friend of court" in the appeal by Fred Oyama of a recent superior court decision escheating his land to the state of California for alleged violation of the Alien Land Law.

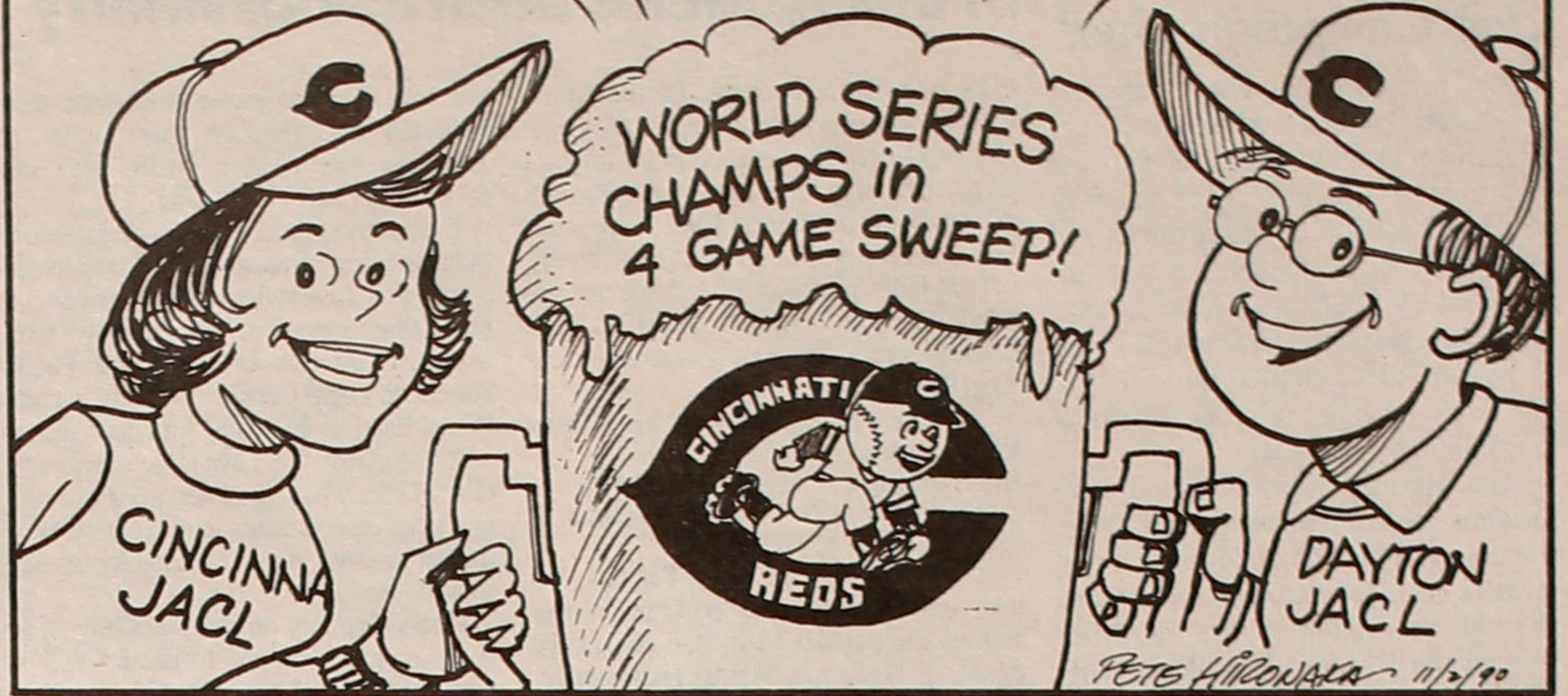
CHICAGO—The first fall showing of Japanese American art exhibit went on display recently at the Univ. of Chicago International House. At the exhibit, sponsored by the Chicago JACL, were more than 25 artists including those by Suetō Serizawa, Mine Okubo, Yasuo Kuniyoshi and George Terasaki.

HUNT, Idaho—The last evacuee family at the Minidoka WRA center which closed last week was ordered to jail for an overnight stay after refusing to pack their personal belongings and evacuate the Hunt camp, according to Jerome County sheriff's office.

NEW HAVEN, Conn.—Dr. Chitoshi Yanaga will join the faculty of Yale Univ. where he will teach Japanese history, government and politics.

OUR CUP RUNNETH OVER!

OHIO-GOZAI MASU!



FROM THE FRYING PAN

BILL HOSOKAWA

South Florida's Morikami Museum

Several years ago, on a trip to Florida, my brother Bob drove us to see the Morikami Museum and Japanese garden at Delray Beach in Palm Beach County. It is a little bit of Japan and Japanese culture, fully authentic, on the semi-tropical Atlantic Ocean side of the Florida peninsula.

How the Morikami came to be is an interesting story which I probably have recounted in this space. But it won't hurt to repeat it. The Morikami, as it is known, is named after George Morikami who arrived in Florida from Japan in 1906 to join a farming venture called the Yamato Colony.

Yamato Colony had its ups and downs and eventually most of the farmers and their families drifted away. But Morikami remained and when he grew too old to farm he donated his land to the community to be used as a park. Morikami is dead now, but Morikami Park, opened in 1977, has grown into a handsome center of Japanese culture.

At the time I saw it, the park was a spacious Japanese style garden with

traditional lake and a museum building for exhibits and a wide range of Japan-related activities. But it has grown since. In mid-October ground was broken for a new museum. The fund-raising campaign was launched with a \$1.5 million matching grant from Palm Beach County and its Parks and Recreation Department.

The latest Morikami newsletter publishes names of major donors. Among five listed as having contributed \$10,000 or more are two banks, two Japanese sources, and Palm Beach County. Among 12 listed as having given between \$2,500 and \$9,999 are four Japanese sources, a couple of banks, several individuals and the Florida Department of State.

"We are very proud to be part of an exemplary public-private partnership," says Larry Rosensweig, director of the nine-person staff, in commenting on the use of tax money for the project.

Understandably, Japanese and Japanese Americans are not numerous

in Florida. None of Morikami's four officers and only three of the 27 trustees have Japanese names. Yet the community has done a remarkable job of founding and supporting a center for culture quite alien to the area.

Dozens of events are on Morikami's schedule for a members and the general public. It is a very active organization. Local talent provides demonstrations and leads workshops but quite often outstanding artists are brought in from New York City and elsewhere. "Explosion of Japanese culture to rock Morikami Park Nov. 3" says the Morikami newsletter in announcing festivities in observation of Bunka no Hi, or Culture Day in Japan.

If nothing else, what is being done at the Morikami is evidence that one does not have to be ethnic Japanese to appreciate Japanese culture. Nor does one have to live in California or Hawaii. The pioneers who helped develop Florida's thriving agricultural industry at Yamato Colony would be surprised at the way the seeds they planted have developed.

LETTERS

Camp Doctors

I recently read of the recognition given to Dr. James Goto, Dr. George Kambara and others for their contribution to medicine and the community during the wartime camps. I would like to mention some of the other doctors who had contributed their medical aid during this period.

Dr. California S. Ushiro, one class later than George Kambara at Stanford Medical School, entered Tanforan Assembly Center and Topaz concentration camp. Since other camps experienced a dearth of doctors, Dr. Ushiro volunteered to go to Heart Mountain with a family, he was of the first to volunteer to go with the 442 regimental combat team. He became its Regimental Surgeon and returned with them to parade before President Truman as its ranking medical officer.

COL. K.W. SASAGAWA(Ret)
 Sunnyvale, Calif.

Redress Names

Recently I attended a big gathering and during the evening, the matter of the Redress payment, etc., came up.

Some made remarks that all of the recipients' names will be published through news media.

I hardly can believe that such a long list will appear in the various papers. The general information seems adequate.

I for one am a very private person. This matter is between the government and myself. Therefore I wish to make a request that my name will be deleted.

RNT
 Laguna Hills, Calif.

You heard wrong! Names are published with prior permission obtained by the ORA, except for individuals who are interviewed by the media.

PERSPECTIVES

JERRY ENOMOTO

'And Justice for All'



SACRAMENTO, CALIF. The other night, while reviewing a remake of a controversial video on the internment, a photo flashed by and I saw myself sitting with several others, including Mike Masaoka, in a Washington, D.C., Senate hearing room. I recalled that it must have been taken some ten years ago during the initial stages of the fight to pass Redress legislation, when I had been invited to testify before a Senate committee.

Then, on a warm summer evening in August of 1988, a number of us left the JACL National Convention in Seattle to make an overnight trip to the nation's capital to observe the historic signing of the Civil Liberties Act of 1988 into law by President Reagan. It was indeed a moving moment, watching an event that so many had worked and hoped for so long.

I remember these occasions now, having just returned from another quick trip to Washington, this time to witness the presentation of the apology from our government, and the symbolic redress checks to the oldest surviving Issei, all of whom looked remarkably well.

From the stirring vocal rendition of the National Anthem, through the tes-

timonials of ORA Administrator Bob Bratt, Deputy Assistant Attorney General James Turner, Assistant Attorney General John Dunne, Attorney General Richard Thornburgh, the presentation of the awards, to the singing of "America the Beautiful," the ceremony at the Great Hall of the Department of Justice was a moving and impressive event.

It was particularly nice to see Mike Masaoka and Etsu there. It would have been too bad if Mike, who contributed so much to this victory, missed it. LEC Board Members Mollie Fujioka, Shig Wakamatsu and I, joined by Sam Shoji of Seattle, enjoyed the historic ceremony. As I watched the presentation, I could not help but feel a sense of sadness that my mother, who I lost ten years ago when she was 94, did not survive to experience it.

The occasion was further enriched by the opportunity to enjoy lunch with Grayce and Hiroshi Uyehara in the beautiful dining room of the Library of Congress. Finally, as JACL/LEC Board Chair, I regret that all past and present Board members could not have shared in the joy of finally seeing the "impossible" happen. But wherever you are you can be justifiably proud of having been key members of the community team that made it happen.

QUESTIONS & ANSWERS ON 'REDRESS CASH CHECKING':

The Nine Most Commonly-Asked Questions

With the beginning of redress payments under the Civil Liberties Act of 1988, many have asked the JACL for more detail about the payment process as well as how to handle various "check cashing" situations.

The Washington JACL Office has prepared the following information in consultation with the Office of Redress Administration for use by the community. JACL Regional Offices are providing assistance to those seeking help with the process.

1. What will be the payment distribution by ORA given that 25,000 redress recipients are to be processed and paid this fiscal year?

On Oct. 9, 1990 the Office of Redress Administration presented the first payments to nine of the eldest recipients. On Oct. 10, 15,000 checks were issued and mailed first class. Assuming a full budget is approved that does not activate the Gramm-Rudman Deficit Reduction Act, ORA expects to pay in this fiscal year 25,000 redress recipients born June 30, 1920 or earlier. At this time, however, because a final budget is not clear, ORA is only authorized to pay up to 16,900 recipients—the amount that would not be affected by a Gramm-Rudman cut. This would cover recipients born Dec. 17, 1917 or earlier.

While 16,900 checks have been processed (with 15,000 sent out in the first round) 1,900 checks are being held back to accommodate those eligible elderly recipients whose cases are still being processed. As of Oct. 18, 1990, Paul Suddes, Deputy Administrator for ORA, informed our office that approximately 15,300

payments have been sent via first class mail to recipients.

How quickly these "holdback" checks get processed is indeterminable due to the variety of cases that are in different stages of processing. For example, some of the military service members are now beginning to submit their information to ORA and are within the age range being presently paid.

2. How will ORA process the remaining 8,100 checks that must be distributed for this fiscal year?

Assuming ORA is fully budgeted, they will process the second round of payments to those within the age range of January 1, 1918 through June 30, 1920. Of the 8,100 checks, approximately 2,100 will be held back to accommodate those who are still in process and within the current age range for this year's payment. Thus, 6,000 checks will go out in the second round for this fiscal year followed by payments to those who are processed along the way.

A further caveat: according to Paul Suddes, of the 2,100 "holdbacks" in this second round, ORA will be reserving approximately 500 checks for those individuals who have not yet come forward in the ORA process and are a priority for payment due to age.

3. If Congress approves a full budget for ORA, how soon will the second round of payments go out?

It takes at least a couple of weeks for ORA to process the payments with the U.S. Treasury Department. So, for example, if Congress were to have a budget agreement on Oct. 19, 1990 and ORA received its full budget, then it would be possible for ORA to issue the checks by early November.

4. How many of the 25,000 to be paid in this fiscal year will be "held back"?

To date, there are now 1,600 "holdbacks" from the first round, plus an anticipated 2,100 "holdbacks" in the second round including about 500 cases reserved for those who have not yet come forward with their information and documentation. Thus, there are 3,200 cases being processed at ORA, with about 500 reserved for those yet to begin. This means 3,700 cases will be paid as they completed in the ORA process during this fiscal year and assuming a full ORA budget. These are in addition to the 15,300 already paid and 6,000 to be paid at the beginning to the second round.

5. How should I advise a surviving heir(s) of a redress recipient who has died and subsequently received a redress check (which is in the deceased's name)?

Our office received a phone call regarding a case in which the redress recipient had died shortly before receiving his redress check which designated his name as payee; the surviving spouse wanted to know what she should do with the check and whether or not she should try to cash the check.

Redress checks must always go to a living, surviving person (not an estate).

ORA will not be printing a form for public distribution regarding these situations, however, they have developed internal procedures for handling cases wherein checks must be re-issued to a surviving heir.

In the case at hand, the surviving spouse should send a letter requesting a re-issuance of the check, include a copy of the death certificate and all information regarding the deceased (name, date of birth, social security number, date of death, you may also want to include decedent's ORA "FN"—File Number). These should be sent with the redress check to the following address:

Office of Redress Administration,
Dept. P, P.O. Box 66740,
Washington, D.C. 20035-6740.

The above should include the surviving spouse's current address and phone numbers (day and evening) and indicate relationship to decedent so that ORA can contact them for additional information, if necessary. Be sure to make and retain copies of all correspondence that you send, including a copy of the redress check which is being returned to ORA.

If an individual is in doubt as to how to proceed they should call the ORA Help-Line as soon as possible.

6. Is ORA extending the hours of their Help-Line and for how long?

For those redress recipients who would be receiving checks in the 1st round, ORA's confirmation of payment letter had included a notification that should they not receive their payment by Oct. 22, 1990, or if it is lost or stolen, they should call the Help-Line immediately. For two weeks (Oct. 22, 1990 - Nov. 2, 1990) the Help-Line hours will be extended from 9:30 a.m. to 9:00 p.m. (East Coast Time).

As we understand from Paul Suddes, this limited extension of extra hours on the Help-Line are for those redress questions related to recipients' payments only and NOT for inquiries related to the eligibility process.

Thus, if a person calls after the regular Help-Line hours (9:30 a.m. - 5:30 p.m. EST) during the two weeks following Oct. 22, ORA can only take their name and number for the purpose of calling that person back.

7. Will there be a newly revised Question and Answer Booklet by ORA regarding questions arising about payment or other issues?

According to Paul Suddes, there will not be another publication for this purpose. The Help-Line is the primary resource for payment questions and ORA will continue its media advisories and distribution of materials through workshops.

Suddes also mentioned that ORA was distributing the ORA procedural guidelines for MILITARY SERVICE MEMBERS to veterans' groups.

8. Have any of the printed ORA forms that have been publicly distributed recently changed in format?

No. If you look at the small print at the lower right corner of the front of Voluntary Information Form (VIF), the Death Information Form and the Change of Address Form, you will see a form number and date. The following form numbers/dates and corresponding forms are being used and should continue to be used as such. Occasionally the Death Information Form and Change of Address Form will be a different color (ORA has used pink and blue colored paper to distinguish forms from one another) but this has no bearing on the substance of the forms:

- (a) Voluntary Information Form—Form CRT-55, Oct. 88.
- (b) Change of Address Form—Form CRT-56, Jan. 90.
- (c) Death Information Form—Form CRT-57, Mar. 90.

9. How should redress recipients handle check cashing problems?

Redress checks are negotiable instruments just as any other checks and banks should treat them as such. The redress recipient whose name is on the check should endorse it as he or she would any other check. Redress recipients should note that their checks indicate that they are "void after one year" and are thus negotiable for a limited amount of time.

Problems may arise in cases where the redress recipient's name on the check is not the person who is actually presenting the check at the bank for deposit.

In one situation, a daughter retained power of attorney over her mother's affairs (because she was confined to a nursing home). The daughter was refused deposit of her mother's redress check because the bank asserted that the daughter's power of attorney did not include the power to endorse and deposit checks. In such a situation the daughter should try to have her mother endorse the check herself, or assuming it is in her mother's best interest, have the scope of the daughter's power of attorney expanded so that she can deposit the check.

These solutions may be faster than going through ORA again in trying to find ways to have the check re-issued, although what is best for the person may depend upon a variety of other factors.

Situations should be more carefully examined when third parties are involved in handling redress checks on behalf of their recipients—

(a) Does the third party have the legal authority to deposit and handle the check on behalf of the recipient? (i.e., legal guardian, conservator, power of attorney, etc.)

(b) Is the redress recipient (him or herself) able to endorse the check for deposit?

Should the bank refuse to accept a redress recipient's check because of minor misspellings of the payee's name, the recipient should still try to endorse and deposit it "as is," just as you would handle a regular check. If the check's designated payee is in total error (e.g. the name is completely incorrect so as to wrongly identify the redress recipient) then ORA will assist in the re-issuance of the check (correspondence and erroneous checks should be sent to the address listed above in item 5).

While ORA cannot be of assistance as to bank check cashing policies, it is advisable that any individual with a question about his or her redress check's designated payee should call the Help-Line BEFORE returning the check to ORA.

For the Record

Presentations of redress checks and letter of apology to elderly Issei after the first ceremonies in Oct. 9 in Washington, D.C. not announced previously are as follows:

The Chicago Event—Oct. 11

SIX REDRESS RECIPIENTS
Shizuko Kikuchi, 99; Frank Kashiro Mizuno, 98; Osawa K. Shimoda, 98; Shizuno Naka, 95; Tsuneko Neeno, 94; Tane Miyata, 94.

DEPT. OF JUSTICE HONOREES

Kay Ige, George Morisato, Eddie Sato, Sam Ozaki and Chiye Tomihiro.

The Fresno Event—Oct. 12

SIX REDRESS RECIPIENTS
Fuji Hashimoto, 102; Sumino Yamoto, 97; Yone Ota, 96; Miyo Nishino, 93; George Sakai, 93; Shigetaro Ito, 92.

DEPT. OF JUSTICE HONOREES

Tom Shimasaki (posthumous), Ken Yokota, Peggy Liggett, Mae Takahashi.

The Seattle Event—Oct. 14

FIVE REDRESS RECIPIENTS
Frank Yatsu, 107; Shoichiro Katsuno, 105; Kichisaburo Ishimitsu, 103; Uta Wakamatsu, 102; Harry Nakagawa, 100.

DEPT. OF JUSTICE HONOREES

Chuck Kato, Wayne Kimura, Cherry Kinoshita, Ken Nakano, Chizu Omori, Bob Sato, Sam Shoji, Massie Tomita.

Names of recipients at the other ceremonies were published earlier: Oct. 12 PC—Washington; Oct. 19 PC—Los Angeles, San Francisco, San Jose; Oct. 26 PC—Honolulu; Nov. 2—Chicago, Fresno, Seattle.

Architect-Engineer Awards Dinner Speaker Announced

LOS ANGELES—Warren Furutani, L.A. Board of Education member, will deliver the keynote speech at the 13th annual Asian American Architect-Engineer Awards banquet Nov. 8 at the Empress Pavilion Restaurant in Chinatown. He will speak on "Forward to the 21st Century" as it relates to the empowerment and networking of Asian Pacific Americans. Information: Kyoko Yamanouchi (213) 550-8497, Calvin Abe (213) 838-0448.

REDRESS FOR VETS

Continued from the Front Page

describe their case, which may fall into one or both of the categories shown below, and provide evidence to document their claim.

ORA will accept as evidence statement from two individuals with first-hand knowledge of the loss of property or deprivation of liberty. In addition, the recipient will need to sign a declaration form and provide a copy of their military discharge papers (ORA will obtain copies of the discharge papers on behalf of a recipient; however, this could cause a delay in confirming eligibility.)

Again, there are two ways by which a Japanese American World War II veteran may be eligible to receive a redress payment:

Loss of Property

The individual must have lost real or personal property of any value because, as a result of government action, they were unable to re-enter the prohibited zone to safeguard their property, or had property seized by the government.

Deprivation of Liberty

The individual must have been prohibited from visiting his interned family or forced to submit to undue restrictions amounting to a deprivation of liberty prior to visiting his family.

STEP 3:

After ORA has reviewed the response to the military package, and the individual has provided adequate documentation as to their eligibility, ORA will send a letter of potential eligibility to the individual. This letter will require the individual to sign an additional declaration and provide proof of current address.

STEP 4:

ORA will review the recipient's response to the letter of potential eligibility. If everything is in order, the recipient will be mailed a final eligibility notice, which confirms that all processing has been completed and that the recipient will receive a check when funds becomes available.

Commercial & Industrial
Air-Conditioning and Refrigeration
Contractor

Glen T. Umemoto

Lic. No. 441272 C38-20
SAM REIBOW CO., 1506 W. Vernon
Los Angeles - 295-5204 - Since 1939

ESTABLISHED 1936

Nisei Trading

Appliances - TV - Furniture

FURNITURE SHOWCASE

2975 Wilshire Blvd., Los Angeles
(213) 383-4100

WAREHOUSE SHOWROOM

612 Jackson St., Los Angeles, CA 90012
(213) 620-0882

SHORT & SMALL MENSWEAR

FOR THE PROFESSIONAL MAN.

Suits & Sport Coats in 34 - 44 Short and Extra-Short, also Dress Shirts, Slacks, Shoes, Overcoats and Accessories by Givenchy, Lanvin, Talia, Arrow, John Henry, London Fog, Sandro Moscoloni, Cole-Hann and Robert Talbott.

KEN & COMPANY

2855 STEVENS CREEK BLVD.
SUITE 2249
SANTA CLARA, CA 95050
PHONE: 408 / 246-2177

LOCATED IN THE NEW
VALLEY FAIR SHOPPING CENTER
SECOND LEVEL, NEAR MACY'S.

ALOHA PLUMBING

Lic. #440840

—SINCE 1922—

777 Junipero Serra Dr.,
San Gabriel, CA 91776

(818) 284-2845 (213) 283-0018

PAID POLITICAL ADVERTISEMENT

PAID POLITICAL ADVERTISEMENT

JAPANESE AMERICANS FOR ARLO SMITH FOR ATTORNEY GENERAL

We urge you to join us on November 6 in voting for ARLO SMITH for Attorney General of California. Arlo Smith has the experience required for the position of chief law enforcement officer of the state, having served as head of the Attorney General's Office Criminal Division for 9 years and District Attorney of San Francisco for over 10 years.

Arlo Smith's opponent is DAN LUNGREN, an individual who ardently opposed redress for Japanese Americans incarcerated during World War II and led the failed effort in Congress to prevent passage of H.R. 442, "The Civil Liberties Act of 1988." While in Congress, Dan Lungren had an appalling record on civil rights. In addition, Dan Lungren has had no experience as a prosecutor.

ARLO SMITH has been a long-time friend of the Japanese American community. He supported the issue of redress and has a proven record of working to support and defend the civil rights and liberties of all Californians.

CALIFORNIA CANNOT AFFORD DAN LUNGREN AS ITS CHIEF LAW ENFORCEMENT OFFICER! VOTE FOR ARLO SMITH FOR ATTORNEY GENERAL.

CO-CHAIRS

Honorable Mas Fukai

Honorable Warren Furutani

Honorable Mike Mitoma

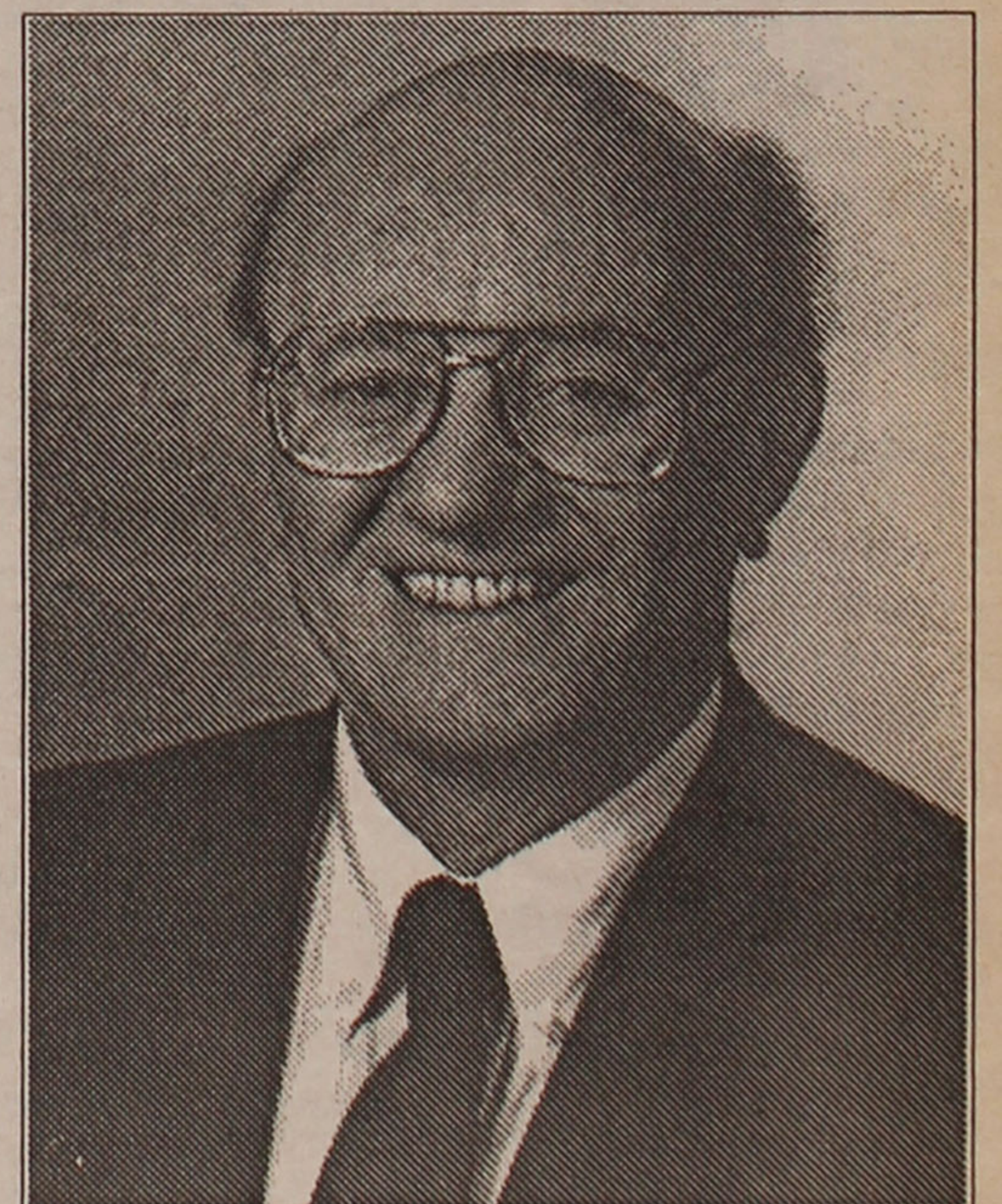
Honorable George Nakano

Clarence Nishizu

MEMBERS

Norman Arikawa
Sachi Doi
Tom Doi
Fred Fujioka
Rick Fukai
Leslie Furukawa
Nancy Gohata
Yas Gohata
J.D. Hokoyama
Tom Iida
Mary Ishimoto
Taro Ishimoto
Miya Iwataki
Janet Kajihara
Harry Kawahara
Midori Kamei
Richard Katsuda
George Kodama
Pat Kubota
Rokuro Kubota
Eileen Kurahashi
Al Kushida
Mitzi Kushida
Carol Matsunaga
Barbara Miyamoto
Roy Machida
Jim Matsuoka
Kazuo Miyashita
Dennis Mukai
Mike Murase
Bert Nakano
Dennis Nishikawa

Alan Nishio
Harriet Nishizaka
John Nishizaka
Rose Ochi
Chris Ohama
Mary Oda
James Oda
Ron Ohata
Vince Okamoto
Henry Ota
Carol Saito
John Saito
Lynn Sakamoto
Marion Shigekuni
Mable Takimoto
Betty Tamaki
Roger Tamaki
Aiko Usui
Mitsuo Usui
Sam Uyehara
Terry Uyehara
Betty Yamaoka
Don Yamaoka
Tak Yamamoto
Kyoko Yamanouchi
Mas Yamashita
Norma Jean Yamashita
George Yokoyama
Miye Yoshida
Ron Yoshida
Toshiko Yoshida
B.J. Watanabe



Paid for by Japanese Americans for Arlo Smith
1498 West 153rd St., Gardena, CA 90247

OBITUARIES

Imada, Koharu, 93, Acampo, Oct. 1: Hiroshima-born, survived by Junichi, d Fusae Kadoya, Misao Sakoda, Kiyoko Furukawa.

Takashi Matsuda, 69

"Tak" Matsuda passed away on Oct. 24 at age 69. A Nisei, he was born in Lincoln, Calif., of migrant farmers but determined as a boy to pursue higher education and a professional career. He completed his M.S. at Case Western Reserve (formerly Case Institute of Technology) and worked for 31 years as a metallurgical engineer at various aerospace companies, including McDonnell-Douglas, Hughes Helicopters, and Aeresearch.

Mr. Matsuda served in Army Intelligence during WW II (1942-45) and later in Japan with the 6004th Air Force Intelligence Squadron (1951-55). He is known for his avid interest in Asian history (especially the Pacific side of WW II), his excellent private library, and his research on Manjiro, the first Japanese to come to the U.S. in 1843. He also taught Japanese at UCLA and worked as a translator-consultant in technical and non-technical fields.

His family remembers him with deep love and respect for his high commitment to education, his generosity, his ability to accept and love his children despite differences of personality, opinion, or religious persuasion, and, finally his strength and dignity in facing his own terminal illness. He is survived by his wife, Jane Lim Matsuda, his daughters and son-in-law, Annette Matsuda, Koleen French and Robert French, his brother, Justin of Huntington Beach, his sister, Mrs. Miyoshi Matsuda in Japan, nephews and nieces.

The funeral will be held at 10:30 a.m. on Saturday, Nov. 3 at Green Hills Chapel of Green Hills Memorial Park, 27501 S. Western Ave., San Pedro (213/831-0311). The family requests that flowers be omitted. Send correspondence to: 23736 Livewood Lane, Harbor City, CA 90710.

Bertram Kambara, 64, Jurist

HONOLULU—A former state attorney general (1969-1971) and retired Circuit Court Judge (1976-1980), in 1965 he had the distinction of being the first lawyer of Japanese ancestry to argue a major case (Hawaii's reapportionment case) before the U.S. Supreme Court, presenting a 43-minute oral argument. A Harvard Law School graduate, he was in private practice with Ted Tsukiyama-Roy Kodani. Never married, he cared for his elderly mother who died in 1984 at age 92. He died in late September.

Tom Kiyosaki, 68, Coach

HONOLULU—The Maui-born 442nd veteran who played football at Univ. of Hawaii after the war, graduating in 1950, and receiving a master's from Columbia in 1952, Kiyosaki returned to teach and coach football at his alma mater Maui High (1952-1958), then to Farrington where his team won the Honolulu championship in 1965. He became vice-principal and in 1978 the executive secretary of the Hawaii High School Association. He died Oct. 12 of a heart attack.

John K. Yamamoto, 83, Linotypist

LOS ANGELES—Linotypist associated with the Nisei press throughout much of his adult life on the Mainland—prewar at the *Rafu Shimpō*, *Heart Mountain Sentinel* during World War II, and eventually returning to Los Angeles in the 1950s, he started his own shop in the late 1960s when the *Crossroads* and the *Pacific Citizen* were among his accounts. He died of cancer Oct. 17. Honolulu-born, he is survived by w Mitsuko, d Elaine Koyama, Arlene Nakamura, 4gc.

Amemiya, Hanayo, 97, Los Angeles, Sept. 20: Yamanashi-born U.S. naturalized citizen, survived by s Hajime, Hiroshi, d Fujiko Komura, Yuki Shibuya, 6ggc.

Doi, Kizo, 72, Walnut Creek, Sept. 26: Hiroshima-born, survived by w Kazuko, s Yasuhiro, Hiroshi, d Miyoko Truong, Yoshiko Scion, 4gc, br Takashi, Masafumi (both Jpn), sis Kazuo Shinda (Jpn).

Kajitani, Tsutomu, 81, Gardena, Sept. 22: Okayama-born, survived by w Ikuko, d Judd Kaminishi, 2gc, 1ggc.

San Jose JACL Deadline for PCYA Applicants Near

SAN JOSE, Calif. — The San Jose JACL will again sponsor one student in the 1991 Presidential Classroom for Young Americans in Washington, D.C. for March 2-9

During the week, leading policymakers from the Congress, Executive Branch, and Judiciary present 15 seminars in which they share their expertise. Students meet with representatives of the news media, the diplomatic community, public interest groups, business, and labor.

The requirements to apply are that the student be either a senior or junior of good scholastic standing and of Japanese descent and that the parents be current (or future) members of the San Jose Chapter.

The Chapter will screen applicants and award one student the cost of tuition and registration, hotel accommodations, all meals during the program, curriculum materials, instructional staff, transportation within the city, health and accident insurance, and theater tickets and special activities. The student's family will pay for the transportation costs to and from Washington, D.C.

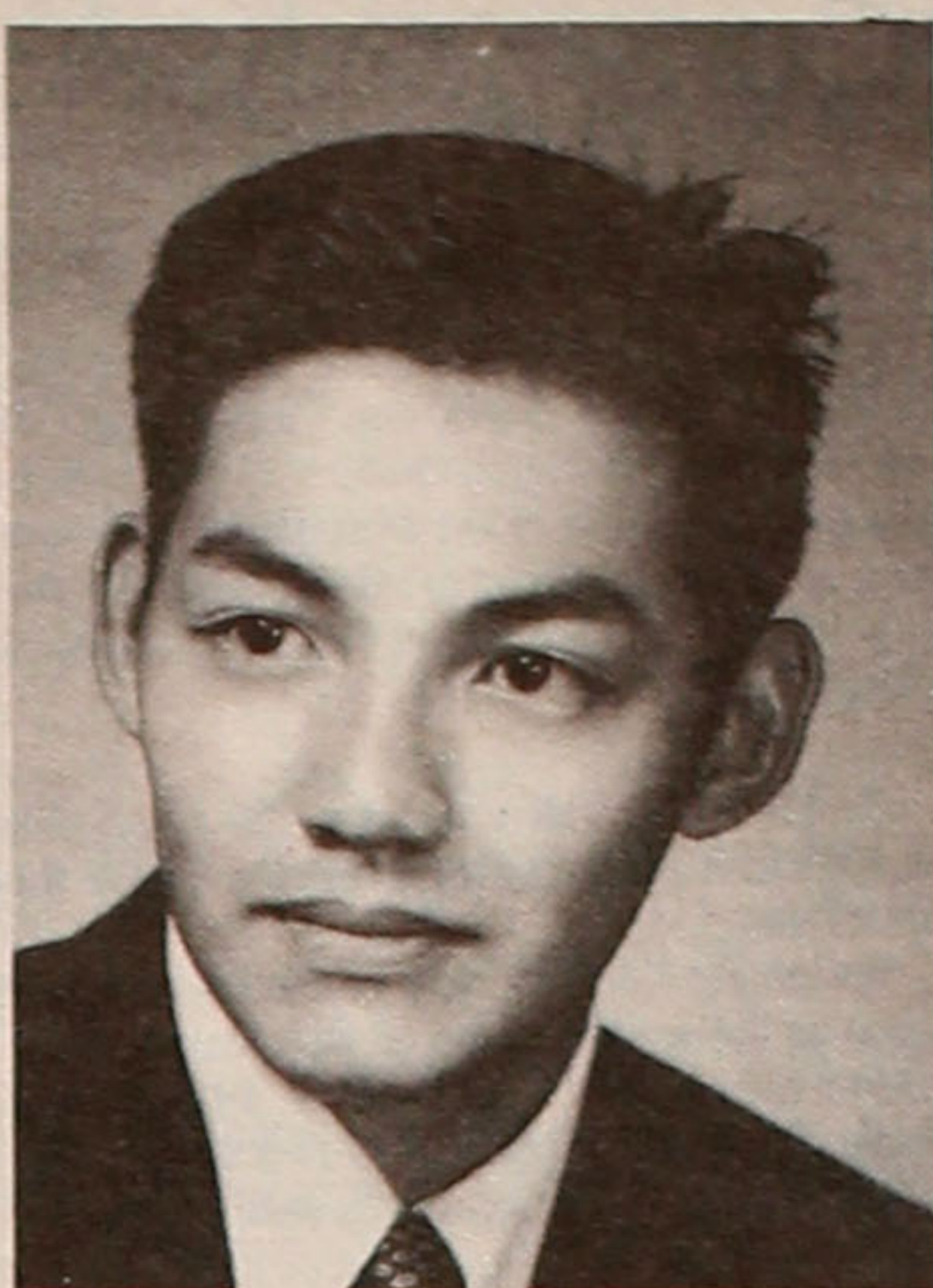
Interested students should contact their counselor for applications or call (408) 441-0504. Deadline for returning the applications and supporting materials will be Nov.

S.F. Bay Area Nikkei Singles Offer Scholarships

SAN FRANCISCO — Two \$500 scholarships are being offered by the San Francisco/Bay Area Nikkei Singles of the Japanese Cultural and Community Center of Northern California. The applicant must be a member of a single parent household and a high school senior or post-secondary student planning to attend or is currently attending an institution of higher learning, a business or vocational college in the academic year 1990-1991.

Application forms may be requested by writing to: San Francisco/Bay Area Nikkei Singles of JCCNC Scholarship Committee, 760-15th Ave., San Francisco, CA 94118; (415) 221-0206. Leave your name and address and repeat it slowly a second time.

THE NEWSMAKERS



GARY YUKI MURAKAMI

► **Gary Yuki Murakami**, son of JACL member Mrs. Pat Murakami of Los Angeles, was awarded the prestigious UCLA Chancellor's Marshall Award "in recognition of outstanding University service." He also was selected for membership in Outstanding Young Men in America. A Dean's List student, he received his B.A. degree in Psychology, with an emphasis in Developmental Disabilities and a specialization in Business Administration and Women's Studies last August. He is a 1985 high honors graduate of Loyola High School.

► **Rick Noji**, Seattle Sansei who stands but 5 ft.-8 but who soared over 7 ft.-4½ in high school for a state record, is taking aim for the 1992 Olympics in Barcelona, according to *Rafu Shimpō* writer John Saito Jr. A Univ. of Washington senior and Pac-10 high jump champion in 1984, he competed in the 1984 Los Angeles Olympic tryout and is now practicing on his own in prospect of the winter indoor track season. He finished third at 7 ft.-6½ at the NCAA finals at Duke.

► **Donald L. Hayashi**, associate director of the United Methodist Church Council on Ministries, California-Nevada Annual Conference, was elected an associate general secretary of the church's General Council on Ministries, based in Dayton, Ohio. A church layman and onetime acting national JACL director has taken up residence in Dayton.

► **Ricky Izumi, 29**, of Cerritos, a Republican and owner of South Bay Music Co., Gardena, was appointed by Gov. Deukmejian to a new commission which will set next year's salaries for the governor, legislators and state officers, the *San Francisco Examiner* reported. The commission was established by passage of Proposition 112 in June.

Over 300 Easy-to-prepare Delicious Local-style Dishes



SUSHI, Appetizers & Dips, Beverages, Breads (Yeast & Quick), Main Meals, Desserts, Pickles (tsukemono), Salads, & Dressings, and Soups.

Recipes from Nancy Sakamoto (instructor of Sushi at Moiliili Community Ctr.), and Elaine Suzuki, a good cook from Maui; & from relatives & friends whose names are on recipes.

NOW IN OUR FIFTH PRINTING!

Please send me _____ copies of Hawaii Style Sushi...recipe book(s) at \$13.50 each (postage included).

Personal checks accepted. Total amount enclosed: \$ _____

Name: _____

Address: _____

City: _____

State: _____ Zip: _____

MAIL TO: NANCY SAKAMOTO
1637 Akiaki Place
Honolulu, Hawaii 96816
(Allow 2-6 weeks for delivery)

Monuments & Markers for All Cemeteries
櫛山石碑社
KUSHIYAMA SEKIHI-SHA
EVERGREEN MONUMENT CO.
2935 E. 1st St., Los Angeles, CA 90033
Bus.: (213) 261-7279 - Res.: (213) 283-5855

Serving the Community for Over 30 Years
KUBOTA NIKKEI MORTUARY
Formerly Shimatsu, Ogata & Kubota Mortuary
911 VENICE BLVD.
LOS ANGELES, CA 90015
(213) 749-1449
Hayamizu, President
H. Suzuki, V.P./Gen. Mgr. - Y. Kubota, Advisor

Four Generations of Experience
FUKUI MORTUARY Inc.
707 E. Temple St.
Los Angeles, CA 90012
(213) 626-0441
GERALD FUKUI, President
NOBUO OSUMI, Counselor

Central Cal District Convention Nov. 18 at Torninos; Golf on Nov. 10

FRESNO, Calif.—This is a reminder. The annual Central California DC banquet will be held at Torninos on Sunday, Nov. 18. It will be a steak dinner and there will be dancing after the dinner. Cressey Nakagawa, National JACL president, will be the keynote speaker.

The registration and dinner fee will be \$25. Fee will be accepted by CCDC chapter president or the CCDC Regional Office.

On Nov. 10, Saturday, the JACL-CCDC golf tournament will be held at the Sherwood Forest golf course in Sanger. Entry fee will be \$40 which will include one ticket to the CCDC Installation Banquet on Nov. 18. Entry deadline is November 1, limited to the first 36 golfers. It will be a four-man scramble. Be sure to give your name, address, phone number and handicap to:

Stan Hirahara, chairman of the tournament, 1597 S. Hope Avenue, in Reedley, 93654; home phone 638-6014 (Reedley); work phone 896-5150 (Selma).

ED SATO
PLUMBING & HEATING
Remodel and Repairs, Water Heaters
Furnaces, Garbage Disposals
Serving Los Angeles, Gardena
(213) 321-6610, 293-7000, 733-0557

Kimura PHOTOMART
Cameras & Photographic Supplies
316 E. 2nd St., Los Angeles, CA 90012
(213) 622-3968

KAMON PLAQUES BY MAIL
6" x 8" \$30.00 7" x 9" \$40.00
Also in 8" x 10", 9" x 12" and 14" x 16" Shikishi Frame
Please send for Kamon Plaque Order Form.
Phone: (707) 874-2845 ICHIBAN GRAPHICS
Fax: (707) 874-1367 12989 OCCIDENTAL ROAD
SEBASTOPOLE, CA 95472

PAID POLITICAL ADVERTISEMENT

PAID POLITICAL ADVERTISEMENT

COALITION OF ASIAN PACIFIC AMERICANS ENDORSEMENTS

The Coalition of Asian Pacific Americans endorses candidates who have demonstrated a commitment and sensitivity to the Asian Pacific American community.

TAKE TIME TO VOTE ON NOVEMBER 6!

CAPA Founders (for identification only)

- | | |
|-------------------------|--------------------------|
| Calvin Abe | Deborah Lee |
| Jeff Adachi | Jack Lee |
| Suzanne Ah-Tye | Michael G.W. Lee |
| Angelo Ancheta | Catherine Lew |
| Roland Anolin | Garrick Lew |
| Marjie Barrows | Wayne Lew |
| Ignatius Bau | Linda Lim |
| Dr. Ari Chen | Evie Low |
| Edward and Janet Chen | Joanne Lowe |
| Onida Cheung | Kaz Maniwa |
| Jason Chin | Robert Matsuoda |
| Deborah Ching | Russell Matsumoto |
| Madeline Chun | Maurice Lim Miller |
| Jiro Enomoto | Dale Minami |
| Donna Fujii | Leigh-Ann Miyasato |
| Richard Hall | Barbara Mizuno |
| Camille Hamilton | Momi Chinn |
| Dennis Hayashi | Penny Nakatsu |
| Pat and Sandy Hayashi | Curis Namba |
| Toso Himel | Lyle Nishimi |
| William and May Hirose | Jeff Ogata |
| Paula Higashi | Linda Okahara |
| Patty Hirota | Gerald Okimoto |
| Sherry Hirota | Edwin Oshika |
| Georgette and Roy Imura | Steven Owyang |
| Daro Inouye | David Paling |
| Liz Jan | Chieu Pham |
| Karen Kai | Remy and Vince Reyes |
| David Kakishiba | Dorothy Roby-Enomoto |
| Kenneth Kamei | Robert Rusky |
| Elaine Kim | Peggy Saika |
| Kathy Ko | Richard Sakai |
| Dr. Gary Kono | Dr. Allan and Mary Seid |
| Minette Kwok | Dale Shimasaki |
| Dr. Monice Kwok | Floyd and Ruth Shimomura |
| Anita and Edwin Lee | Dr. Pablo Stewart |

✓	SLATE CARD
✓	GOVERNOR Dianne Feinstein
✓	ATTORNEY GENERAL Arlo Smith
✓	LIEUTENANT GOVERNOR Leo McCarthy
✓	TREASURER Kathleen Brown
✓	CONTROLLER Gray Davis
✓	STATE ASSEMBLY, 3RD DIST. Lon Hatamiya
✓	PROPOSITIONS 131 & 140 No

- Sharon Sue
John and Jennifer Sugiyama
Ron and Carol Takaki
Barbara Takei
Donald Tamaki
Bill Tamayo
Susan Tamura
Teresa Tan
Maeley and Ronald Tom
Eugene Tomine
Fei Tsen

- Teresa Tucker
Dr. Clifford Uyeda
Emi Uyehara
Ron Wakabayashi
Jean Wong
Dr. Craig Yamada
Raniko Yamada
Connie Young
Hoyi Zia
Ida Zodorow

(Paid for by Coalition of Asian Pacific Americans. ID Number 881027)

HOW TO TAKE THE PRESSURE OUT OF NEW CAR LOANS

- Sumitomo's favorable interest rates
- Quick auto loan processing
- Combination pressure gauge/key chain gift upon loan closing
- Special prices on new cars with the Auto Plan Program*
- 1st year free regular checking with automatic debit
- 1/4% off regular interest rate with automatic debit

If you're in the market for a new car, now's the time to visit Sumitomo Bank. Special offer ends December 14, 1990.
*Ask loan representative for more details

Sumitomo Bank
Sumitomo Bank of California Member FDIC
EQUAL CREDIT OPPORTUNITY LENDER

1000 Club Roll

Year of Membership Shown
 *Century, **Corp/Silver, ***Corp/Gold
 ****Corp/Diamond; L-Life; M-Memorial

(1000 Club Life Totals)

The 1989 Totals 1,689 (50)

Previous Total: Active 1,535 (4)
 This Report No. 43 14 ()
 Current Total (corrected) 1,549 (4)

No. 43: Oct 15-19, 1990 (14)

Chicago: 35-Dr Roy Teshima.
 East Los Angeles: 8-Dean Aihara*, 4-Edward W Lee, 1-Dr Takeshi Matsumoto.
 Fresno: 31-Dr Shiro Ego, 33-Chisato Ohara.
 Marina: 25-Dr Roy T Ozawa.
 Philadelphia: 10-Reiko K N Gaspar.
 Progressive Westside: 24-Dr Franklin H Minami.
 Sacramento: 14-Ray Matsubara.
 San Francisco: 6-Beth Renge.
 Seattle: 22-Thomas T Mukasa, 35-S Billee Yoshioka.
 Venice: 38-Mary E Wakamatsu.
CENTURY CLUB*
 6-Dean Aihara (ELA).

Fresno Assembly Center Memorial Plans Underway

FRESNO, Calif.—Groundbreaking ceremonies for placement of a memorial plaque were held Oct. 24 at the locale of the 1942 Fresno Assembly Center at the Fresno County Fairgrounds.

A formal dedication is being planned for February, 1991, according to Ken Yokota of Fresno JACL. The center housed some 10,000 Japanese Americans evacuated from west of Highway 99 and in the city. Most were eventually relocated to Jerome, Ark., WRA center.

J.A. Optimists Election

LOS ANGELES—Dr. Henry I. Okamura, longtime Silver Lake resident and club member for 32 years, was elected president of the Japanese American Optimist Club, which was chartered in 1954. Nolan Maehara, DDS, was honored as the Optimist of the Year.

FOR THE RECORD
 The P.C. will correct all errors occurring in its news columns. If you find a problem with a story—an error of fact or a point requiring clarification—please call the news desk, (213) 626-3004.

4—Business Opportunities

Residential & commercial development on beautiful setting along Delaware River. Residential development 1/3 complete in historic community close to school & shopping. Easy access from Rt. 84 for NY & NJ 2nd home owners. Reply to: Developer, RR 2, Box 2055, Honesdale, PA 18431 (717) 253-6490.

ALBERTA, CANADA
 29 unit motel, progressive area near Waterton Glacier National Park. Room for expansion. 1, 2 & 3 bdrm units, rec room, hot tub, coin laundry. Asking \$540,000. Private sale. Call (403) 653-4481. Or write: Box 308, Cardston, Alberta T0K 0K0

CANADA
FOR SALE
 Taxi Company in St. John's NFLD. 25 Taxi slots, 25 taxi licenses. Excellent investment. Reason for selling—owner retiring due to health. Asking \$275,000. For more info call (709) 753-4293 or write: A.R.N. Ent, 36 Ridge Road, St. John's Nfld., A1B 2H5.

ONTARIO, CANADA
GREAT FAMILY OPPORTUNITY!
Restaurant For Sale By Owner
 Located 6 miles from Windsor, great location for business. Near 5 golf courses etc. Family operation for food, a fine set-up with coffee shop on one side and formal dining room which seats 100 on other. Interior completely remodeled by owner. A corner property with amenities too numerous to mention includes 5 bedroom apartment attached. A strip license would be available if desired.
 Asking \$420,000.
 Call (519) 726-5443, anytime.

ONTARIO, CANADA
 AN INVESTMENT GIFT store with home on Hwy 17, Bruce Mines, Ont. 1500 sq ft of retail space and 2000 sq ft of living area in a unique log building. Ideal for the semi retired. (705) 785-3858. \$199,000 + inventory. Owner, Box 164, Bruce Mines, Ont., P0R 1C0 Canada.

B.C. CANADA
THE EAGLE HAS LANDED
 Mrs. Bell, owner of The Golden Eagle Trading Post in Radium Hot Springs, BC decided to retire. This landmark business has operated continually for 24 years. Fixtures, signs, goodwill \$50,000 plus inventory (to be adjusted). Excellent lease available. Phone (604) 347-9316, days. Or evenings (604) 347-9512. Fax (604) 347-9011.

4—Business Opportunities

CANADA
FOR SALE
 Wholesale souvenir business, producing low end souvenirs. Doing business across Canada with the target markets being national parks in Banff, Lake Louise, Jasper etc. Business is located in small town in mountains and could be moved to Calgary. Take advantage of this fine opportunity. Contact owner: phone, (604) 347-9628. Evenings, (604) 347-9512. Fax, (604) 347-9011.

B.C. CANADA
VANCOUVER
 Deli restaurant, d/t, 50 seats. Super family operation. Money making. Morning & lunch trade. Mon - Fri. Grossing \$1200 - \$1300/day. Asking \$279,000. Private sale.
 (604) 687-5785 and (604) 685-4250.

CANADA
ALBERTA IS BOOMING
 With higher oil prices now there is opportunity to joint venture in both residential and commercial properties. Contact principal, Patrick J. McCarthy, RR #2, Camrose, Alberta T4V 2N1 Canada. Phone# (403) 672-2990, Fax (403) 672-5150.

CANADA
WINDSOR, ONTARIO RETAIL BUSINESS
 OPPORTUNITY to purchase highly successful building supply business specializing in plumbing and electrical sales. Extremely profitable and well-established turn-key operation. Fully computerized with enormous growth potential. Centrally located. Member of buying cooperative. Call (519) 966-3633.

ALBERTA, CANADA
HEAVY OIL AREA!!
Motor Inn for Sale
 Modern 49 room motel and 150 seat restaurant/lounge. Situated in the heart of heavy oil country in Northeast Alberta. Motel features all amenities with three bedroom manager's suite.
 Please call owner:
 (403) 438-2303.
 Or write:
 Box 4280
 Edmonton, Alta, T6E 4T3 Canada.

SASKATCHEWAN, CANADA
FOR SALE: Building supply home center, including land, buildings, two forklifts, three trucks, shelving, fully computerized and inventory. Excellent location and sales. Reason for sale: retiring. Immediate possession. Private sale, will train. Contact Mike, (306) 542-3633, Box 158, Kamsack, Sask, S0A 1S0 Canada.

B.C. CANADA
 Family business for sale in the sunny E Kootenays. 12 unit motel with room for expansion. Lovely 3 bdrm house included. Option to buy 2nd business nearby. Convenience store with gas station management. Excellent family opportunity. Private Sale, will train. Will consider taking a house as trade or part trade. Selling due to illness. Phone (604) 426-2332, ask for Peter or Yvonne.

5—Employment

KOVR-TV is searching for a PRODUCTION ASSISTANT. Requires college degree or equivalent with minimum one year experience working in television news gathering info, writing, operating Chyron and Teleprompter. Ability to write for broadcast, basic clerical skills. Experience as field reporter or producer is preferred. Send resume to: KOVR-TV, 2713 KOVR Drive, West Sacramento, CA 95605, ATTN: News Director. EOE M/F.

KOVR-TV is searching for an OPERATIONS TECHNICIAN. Requires degree in TV broadcasting or communications with minimum 2 years experience. Ideal candidate would possess SBE certification and experience with videotape operations, video switchers, studio and remote cameras, audio consoles, satellite terminals, character generators, still store devices and master control operations. Send resume to: KOVR-TV, 2713 KOVR Drive, West Sacramento, CA 95605, ATTN: Chief Engineer. EOE M/F.

5—Employment

EARN MONEY TYPING/PC/WP. At home. Full/part-time. \$35,000/yr. potential. (805) 687-6000, Ext B-1317.

SOCIAL WORKER
 MA/MSW 2 years clin. experience to work with Japanese families & com. mental health clients. Bilingual/bicultural preferred. EOE. Send resume to: FSA SF 1010 Gough St. 94109 Attn: SS.

****WORK IN JAPAN****
 Seeking Travel Agent, Operation Staff, Japanese/English
CALL (213) 641-0093

9—Real Estate

ONTARIO, CANADA
 Attention Investors
 Approximately 6,000 acres. Great for development. Halfway between Toronto and Ottawa. \$6,000,000.
 Serious offers only.
Please call (416) 503-2414.

ONTARIO, CANADA
 Attention Investors
PETERBOROUGH
Prime Location
 4.7 Acres-Commercial
 Zoned SP 157-C4-73
\$1,880,000
Kitchener Central
 Building Lots
 --Most Desirable Location
 --Close to all Amenities
 --From \$74,000
Silvia Baumeister, Broker
 Call (519) 742-3690 or
 Fax (519) 742-0319
 For your business and residential relocation needs.
 Call (800) 523-2460, ext. C520
FIRST CONTINENTAL REALTY (KIT.) INC.

ONTARIO, CANADA
COLLINGWOOD
 Country Home on 44 Acres
 Just 8 miles from Collingwood (29 from Barrie and 67 from Toronto Airport) this magnificent property is on a paved road convenient to all activities in the four seasons Collingwood area. The 5400 sq ft 6 bdrm home has many features such as main floor master suite, spiral stairs from a spacious foyer to a panelled tower den, etc. Custom designed to take advantage of its superb Escarpment setting, the unique combination of views from inside are down into a wooded ravine with an everflowing stream winding through and across rolling fields to 8 miles distant Georgian Bay, around the arc of the southern end and up the far shore to the hills east of Elmvalle. And south to the ski hills at Barrie. Incorporable! Multi-purpose 40 x 60 steel barn. The just reduced offering price of \$925,000 reflects current market conditions and that this is a private sale. There is additional adjoining acreage that may be available.
 Please phone
 (705) 445-3659.

9—Real Estate

AZUSA, CALIFORNIA
 Townhouse 3+2 1/2, 1471sf, central air cond. Near Foot Hills Mountains, quiet area, 2 car attached, 2 blocks from school, near shopping, 2 miles from Race Track, by golf course, 5 pools. \$148K. By owner.
(818) 334-3865.

Las Vegas. By Owner near University Las Vegas. 2 story, 2213sf + double attached garage, 3, 4 or 5Br, 2 1/2 Ba, living & dining rooms, family room w/fpc, kitchen w/pantry, breakfast bar, stove, d/w, dishpl. 87' X 111' lot, custom drapes, new carpet, RV prk. \$130K (702) 798-7818. I-9 pm. Principles Only.

EXCLUSIVE HOME ON PRIVATE GOLF COURSE
 Why pay \$500,000.00 for a condo when you can own a beautiful new 3BD/2B home with Swimming Pool & Waterfall Whirlpool, completely furnished at BLACK DIAMOND RANCH, Voted #1 PRIVATE GOLF COURSE by GOLF DIGEST, Voted 2 Years in a row as the #1 GOLF COURSE IN THE STATE OF FLORIDA. \$395,000.00 Includes home elegantly furnished, new golf cart, equity membership plus a exquisite 280SL Mercedes Sports Coupe. Call (904) 746-9843.

NIAGARA Falls, 3500 sq ft, 5 year, commercially built building, 400 amp service, 50 x 150' fenced lot, 1500 sq ft fully serviced 2.5 baths, 3 bdrm upstairs apt, zoned commercial/tourist/ res ideally located on main tourist street, close proximity to future development & Niagara Falls, shows excel growth potential. \$600,000. Private Sale. Sean, (416) 357-2335.

ONTARIO, CANADA
ORILLIA PROPERTY
 Approximately 500 acres.
 Great for development.
 \$500,000.
 Serious offers only.
Please call (416) 503-2414.

10—Rentals

LOS ANGELES, CA
LUXURY HANCOCK PARK ADJ.
 2 Br/2 Bath, fireplace, a/c, pool, gated parking. Beautiful building, quality apartment.
 from \$900.
 (213) 388-4336
 550 S. Gramercy.



Equal Housing Opportunity
 A 100 unit Section 8-202 rent subsidized Senior Housing Project, and owned and operated by the Nikkei community of San Diego, wish to add additional names to the waiting list for prospective tenants. This list is compiled for seniors 62 and above with annual income of no more than \$13,600.00 single or \$15,500.00 couple. The project was opened in November 1983, is beautifully landscaped, is located close to shopping and health-services, and has maintained an excellent record of safety and security. All interested persons are requested to call (619) 422-4951 or write to Joe Owashi, chairperson of Kiku Gardens Admissions Committee, 1260 Third Avenue, Chula Vista, CA 92011.

National Business & Professional Directory

Your business card in each issue for 25 issues is \$15 per line, three-line minimum. Larger type (12 pt.) counts as two lines. Logo same as line rate as required.

Greater Los Angeles

ASAHI TRAVEL
 Supersavers, Group Discounts, Apex Fares
 Computerized-Bonded
 1543 W. Olympic Blvd, #314, L.A. 90015
 (213) 487-4294 • Call Joe, Gladys or Hazel

FLOWER VIEW GARDENS
 Flowers, Fruit, Wine & Candy
 Citywide Delivery/Worldwide Service
 1801 N. Western Ave., Los Angeles 90027
 (213) 466-7373 / Art & Jim Ito

Dr. Darlyne Fujimoto
 Family Optometry & Contact Lenses
 11420 South St. Cerritos, CA 90701
 (213) 860-1339

TAMA TRAVEL INTERNATIONAL
 Martha Igarashi Tamashiro
 626 Wilshire Bldg., Ste 310
 Los Angeles 90017; (213) 622-4333

Orange County

Victor A. Kato
 (714) 841-7551 • Exceptional Real Estate
 17301 Beach Blvd., Suite 23
 Huntington Beach, CA 92647

Dr. Ronald T. Watanabe
 CHIROPRACTOR
 7102 Edinger Avenue
 Huntington Beach, CA 92647
 (714) 846-0584

North San Diego County

Realty Executives
 1817-A Vista Way, Vista, 92083
 Ask for K. J. Sameshima - Dedicated Service
 Office (619) 758-2300, Res. (619) 726-5052

San Diego, Calif.

Paul H. Hoshi Insurance
 852 - 16th St., San Diego, CA 92101
 Office (619) 234-0376 Res. (619) 421-7356

WENDY JO NIWA, Realtor
 Office (619) 566-2810 Res. (619) 284-2846

San Jose, Calif.

EDWARD T. MORIOKA, Realtor
 (408) 559-8816 a.m.; 998-8334 p.m.

Watsonville, Calif.

Tom Nakase Realty
 Acreage, Ranches, Homes, Income
 TOM NAKASE, Realtor
 25 Clifford Ave. / (408) 724-6477

San Francisco Bay Area

Y. KEIKO OKUBO
 Ten Million Dollar Club
 46703 Mission Blvd.,
 Fremont, CA 94539 (415) 683-0600

VETERAN REAL ESTATE sm
 HAZEL BUTTERFIELD—Residential Specialist
 6298 Mission St., Daly City, CA 94014
 Office: (415) 991-2424, Pager: (415) 637-6424

Sacramento, Calif.

SHARON NODA, GRI
 COOK REALTY
 Residential/Investments
 (916) 451-1401 - Res. Off.
 (916) 567-9050 - Voice Mail

Seattle, Wash.

Imperial lanes
 Complete Pro Shop, Restaurant, Lounge
 2101-22nd Ave So., Seattle (206) 325-2525

The Intermountain

Mam Wakasugi / Blackaby Real Estate
 190 SW 4th Ave, Ontario, OR 97914
 (503) 881-1301 or (503) 262-3459

PC's Home for Your Business-Professional Calling Card

SAN JOSE POLICE DEPARTMENT NOW HIRING

TEST DATE: NOVEMBER 30, 1990

QUALIFICATIONS:

1. At least 20 1/2 years of age at time of application.
2. Must be a U.S. Citizen or have applied for citizenship one year prior to the date of application.
3. Must pass City medical examination at the time of hire.
4. Must have 39 semester or 60 quarter units from an accredited college or university.
5. Must possess a valid driver's license.

SALARY AND BENEFITS:

Academy	\$ 1,186.40 Bi-weekly
Recruit	\$33,675.20 Base Annually
Top Step W/Advance Post & Holiday Pay	\$51,059.20 Annually
Medical & Dental Plan	
96 Hours Annual Sick Leave	
Between 2 and 6 weeks Vacation per year	
Weight Training Room	
Credit Union	
\$600.00 Annual Uniform Allowance	
City of San Jose Retirement	
Life Insurance Policy	

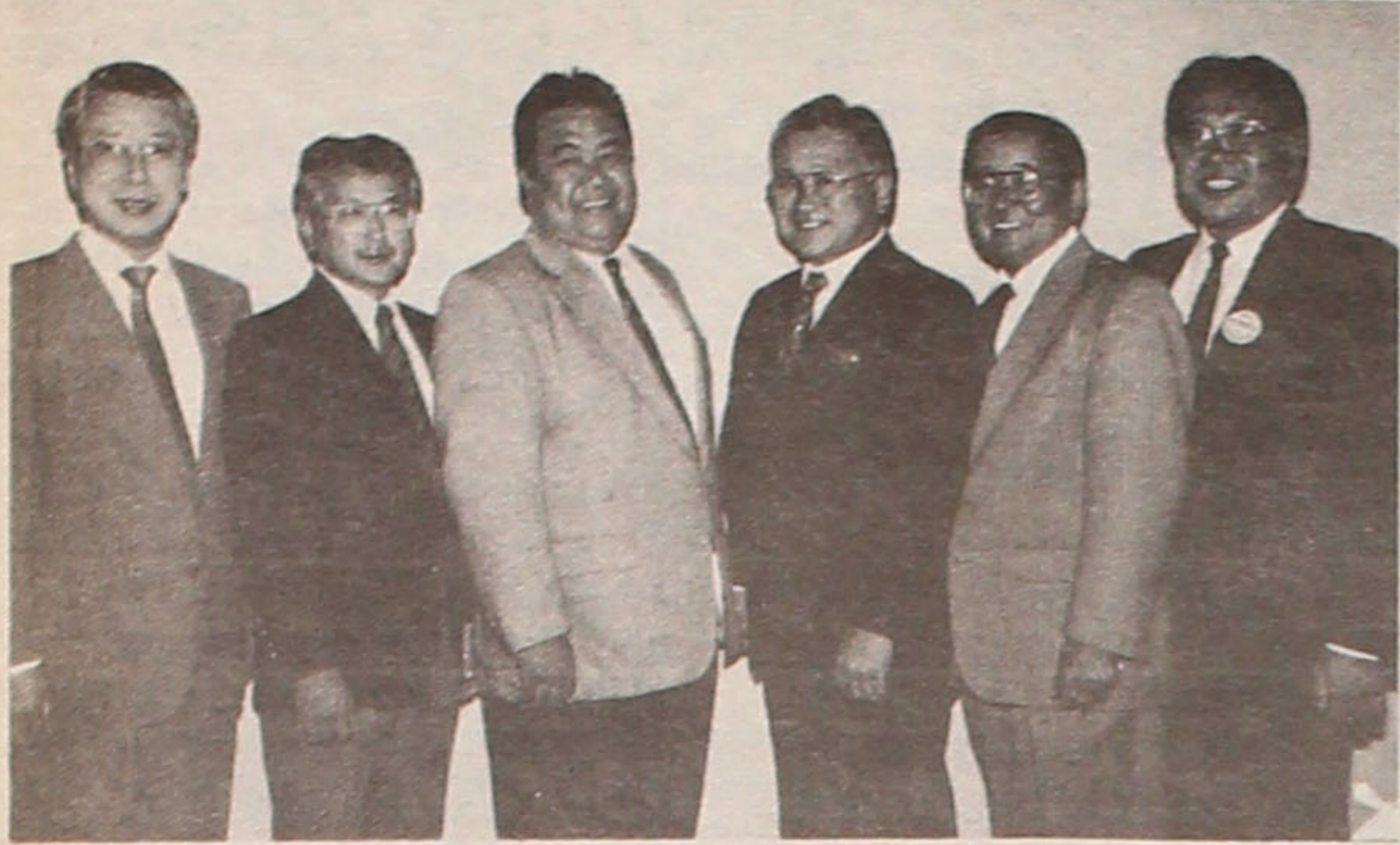


Photo by Alvena Lew

NIGHT WITH MIKE HONDA—A supervisorial candidate in Santa Clara County, Mike Honda (fourth from left) meets Asian Pacific public officials in Los Angeles County: (from left) Diamond Bar city councilman Jay Kim, Torrance city councilman George Nakano, L.A. Board of Education member Warren Furutani, (Honda, longtime school teacher and San Jose JACL member), Gardena city councilman Mas Fukai, and Dennis Nishikawa, Los Angeles Public Works Commissioner.

JACL PULSE

ARIZONA

November 7, board meeting will be held at the JACL Hall, 5414 W. Glenn Dr., Glendale, Arizona, at 7:30 p.m.

Feb. 23-24, 1991, the annual Matsuri will be held at the Heritage Square, 6th St., and Monroe, Phoenix, AZ. Theme for the Matsuri will be Samurai. Sponsors include the City of Phoenix Parks, Library and Recreation Department, Arizona Chapter JACL, the Japan-American Society of Phoenix, the Himeji Group of the Phoenix Sister Cities Commission, the Arizona Buddhist Church and the Phoenix Japanese Free Methodist Church.

BERKELEY

Nov. 9, JASEB Bingo Night, 5:30-10:30 p.m.

Jan. 26—"Tribute to Nisei". Wendy Tokuda guest speaker and host. Information: Patty Kobayashi (526-2964) or Terry Yamashita (527-1131) Chapter volunteers are still needed for this affair.

CENTRAL CALIFORNIA

Nov. 10, CCDC Golf Tournament at Sherwood Forest golf course in Sanger. Entry fee will be \$40 which will include one ticket to the CCDC Installation Banquet on Nov. 18.

CCDC Annual Banquet on Sun., Nov. 18 at Torino's Restaurant. Cressey Nakagawa keynote speaker.

INTERMOUNTAIN D.C.

Nov. 2-3-4—50th Anniversary Reunion of JACL members from Rexburg, Idaho Falls and Pocatello at Cactus Pete's in Jackpot, Nevada. Saturday Banquet, 6 p.m., keynote speakers (including Nat'l Pres. Cressey Nakagawa), renew old friendships and meet new friends; Sat. 11 a.m. IDC Meeting; Info: Hid Hasegawa, 3562 E. Crawford, Idaho Falls, ID 83401, (208) 529-1525.

PACIFIC SOUTHWEST

Open House and welcoming reception to introduce new Regional Dir. Jimmy Tokeshi, Nov. 8, 6-8 p.m., Japanese American Cultural Ctr., 244 S. San Pedro, L.A. Info: (213) 626-4471.

MILWAUKEE

Nov. 16, 17, 18—"Freedom" is the theme for the Fair, Milwaukee JACL. For info: call Ed Jonokuchi 672-5544.

JACL Christmas Party, Sunday, Dec. 9, Mitchell Pavilion. Call now for reservations—Margaret Igowsky 643-5999, Lynn Lueck 421-0992.

NEW YORK

Dec. 8, Holiday Bazaar at the Japanese American United Church on Seventh Avenue between 24 & 25 Sts.; Potluck supper and Auction, volunteers are being sought, call Lillian Kimura at (212) 614-2838 for information.

RENO

Nov. 18, Sunday, 12 noon-3 p.m. Mochitsuki and Pot Luck at Knights of Pythias Hall, 900 Nevada St., Chairperson Sakae Tsuda.

SAN GABRIEL VALLEY

Benefit dance Sat., Nov. 3, 7:30-12 p.m. at 1203 W. Puente Ave., W. Covina. Door prizes, refreshments, open bar. Proceeds to benefit building maintenance fund. Info: Marvel (818) 960-2566 or Toshi (714) 861-9676.

SAN MATEO

Nov. 16/17, Tomodachi "Holiday Boutique"

Community Center. Nov. 17/18, Ikoi no Tomo, Craft Fair, Foster City Rec Center. Phone: (415) 343-2793.

SELANOCO

Nov. 7, Orange County Redress workshop featuring Robert Bratt (ORA), 7 p.m., Wintersburg Presbyterian Church, 13711 Fairview Ave. Garden Grove, 92643. Info, Frank Kawase (714) 525-9779.

STOCKTON

Nov. 11, 10 a.m. Stockton JACL to host golf tournament tee off at Van Buskirk Golf Course. Entry fee \$20 and golfers are encouraged to register on four-somes.

The Dec. 31 New Year's Eve Dinner-Dance will be held at the Holiday Inn in Palo Alto. The dinner will begin at 8 p.m. after the cocktail hour starting from 7 p.m. The menu will be prime rib or chicken. The cost will be \$100 per couple or \$50 per person. Music will be provided by Ed Oliveira, the Tunes Mobile Disc Jockey. More Info: Hiroko Yoshida (415) 854-1392.

Trip to Ice Capades at Oakland Coliseum, Sat., Dec. 1. \$24 per person. Info: (209) 463-7945.

VENTURA

Annual Pot Luck Dinner and Bingo, Friday, Nov. 9, 7 p.m. Security Pacific Bank (formerly Gibraltar Savings and Loan, 5800 Santa Rosa Rd., Camarillo. Bring your favorite dish to add to the buffet table. Info, Stan Mukai (805) 487-7724, Cherry Abe (805) 484-1570, Joanne Nakano (818) 991-0876.

WATSONVILLE

Dec. 2, Watsonville JACL Chapter installation dinner and Keiro Kai Celebration, at Watsonville Buddhist Temple Hall at 5 p.m. Dinner reservations for \$15 per person, made payable to the Watsonville JACL are requested by Nov. 16. Call Rosie Terasaki at (408) 728-7728, Jeanni Kadotani (408) 724-2784 or Itaru Nitao at (408) 722-3673 for further information.

WEST LOS ANGELES

Dec. 2 JACL and Auxiliary Installation Champagne brunch and luncheon from noon at the Holiday Inn /Bay View Plaza, 530 Pico Blvd. in Santa Monica. Information or tickets, Charlie at (213) 822-3363 or Ron at (213) 478-5922.

Items publicizing JACL events should be typewritten (double-spaced) or legibly hand-printed and mailed at least THREE WEEKS IN ADVANCE to the P.C. office. Please include contact phone numbers, addresses, etc.

NEW IDEA!!!
A perfect gift for the Holidays
A Dried Fruit Gift Pack
or
A Basket of Mixed Nuts
For free brochures, write to or call:
KONATSU FRUIT SALES
41561 Road 126
Orosi, CA 93647
Phone: (209) 528-6936
Fax: (209) 528-6179

1990 West L.A. Travel Program

Administered by WLA Travel, Inc.
For JACL Members, Family & Friends
Airfare: LAX-TYO-LAX \$578 + Tax

Mexico's Copper Canyon Tour (Limited Space)
Nov 11 - Nov 17
Toy Kanegal, escort

Singapore, Bangkok Malaysia, Hong Kong
Nov 26 - Dec 13
Bill Sakurai, escort

Japan, Hong Kong Xmas Shopping
Dec 7 - Dec 15
George Kanegal, escort

1991 Tours

- #1 Colorado Ski Trip January 1991
Phyllis Murakawa, escort
- #2 Hokkaido Snow Festival Feb 1 - Feb 10, 1991
Ray Ishii, escort
- #3 Japan Fantastic Cherry Blossom Tour Mar 28 - Apr 9, 1991
Ray Ishii, escort
- #4 Australia, New Zealand Tahiti April 1991
Toy Kanegal, escort
- #5 Vacation in Florida & Disneyland Epcot/World May 1991
- #6 New York & New England Countryside Tour May 1991
Phyllis Murakawa, escort
- #7 Japan Golden Route Tour May 6 - May 16, 1991
- #8 National Parks & Canyon Spectacular June 6, 1991
Toy Kanegal, escort
- #9 Alaska - Our 49th State June 8, 1991
- #10 Japan - Hokkaido & Ura Nihon June 10, 1991
- #11 Scandinavia & Russia July 1 - July 20
- #12 South America Tour July 1991
Masako Kobayashi, escort
- #13 Salmon Fishing - Alaska (Wait List Only) July 22 - July 29, 1991
Galen Murakawa, escort
- #14 Alaska - Land & Cruise (South Bound) July 1991
- #15 Arctic Circle (Limited Space) July 1991
- #16 Canadian Rockies August 1991
Phyllis Murakawa, escort
- #17 England & Ireland September 1991
Toy Kanegal, escort
- #18 Portugal, Spain & Morocco September 1991
Phyllis Murakawa, escort
- #19 Hokkaido & Tohoku Tour Sep 30, 1991
- #20 Continental Europe October 1991
- #21 Old Japan in the Fall Oct 1 - Oct 15, 1991
Bill Sakurai, escort
- #22 Japan First Glimpse Oct 7 - Oct 18, 1991
Ray Ishii, escort
- #23 Historic East Tour Oct 10 - Oct 22, 1991
Yuki Sato, escort
- #24 Southern Japan - Kyushu Oct 18 - Oct 26, 1991
Toshi, escort
- #25 Mexico & Yucatan Country October 1991
Toy Kanegal, escort
- #26 New Mexico Indian Country October 18, 1991
- #27 New England & Canada Fall Foliage October 1991
- #28 Singapore, Bangkok, Malaysia, Hong Kong, Seoul Nov 25 - Dec 16, 1991
Eric, escort
- #29 Japan, Bangkok Xmas Shopping Tour Dec 10 - Dec 20, 1991
Toy Kanegal, escort

For information, brochure, write to
WEST L.A. TRAVEL
12012 Ohio Ave.
Los Angeles, CA 90025
(213) 820-5250
820-3451 (day) 826-9448 (eve)

1991 TANAKA TRAVEL TOURS

EXCEPTIONAL VALUE • QUALITY TOURS

FLORIDA/DISNEY-EPCOT & NEW ORLEANS	(8 days) FEB 23
JAPAN SPRING ADVENTURE (Incl Festival)	(14 days) APR 10
JAPAN SHIKOKU & KYUSHU	(13 days) MAY 13
YELLOWSTONE/MT. RUSHMORE	(8 days) MAY 28
CANADIAN ROCKIES/VICTORIA...Good Accom/Meals	(8 days) JUN 12
ALASKA CRUISE/LAND TOUR	(12 days) AUG 27
(\$200 Disc't for Reservations Rec'd by JAN '91)	
EUROPEAN PICTURESQUE...Rail/Bus Travel	(15 days) SEP 8
EAST COAST & FALL FOLIAGE...Most Popular Tour	(10 days) SEP 30
JAPAN AUTUMN ADVENTURE	(13 days) OCT 7
AUSTRALIA/NEW ZEALAND, Incl Great Barrier Reef	(17 days) NOV 4



CALL OR WRITE TODAY FOR OUR FREE BROCHURES
TANAKA TRAVEL SERVICE
441 O'Farrell St., San Francisco, CA 94102,
(415) 474-3900



Japanese American Travel Club
ENDORSED BY THE NATIONAL JACL
3131 Camino del Rio North, #1080
San Diego, CA 92108

TOURS AND CRUISES

Elaine Sugimoto, Managing Director
Sales: Sami Kushida, Rajada Allen (619) 282-3581
Toll-Free U.S.: (800) 877-8777, ext. 215 Fax: (619) 283-3131
Office Hours: 8 - 5, Monday/Friday

JAPAN

JAPAN DISCOVERY TOUR
FROM \$1460.03

Package Includes:

- Roundtrip air on ALL NIPPON AIRWAYS from Los Angeles
- 6 nights accommodations at the ANA TOKYO HOTEL
- Half day Tokyo City Tour
- Roundtrip airport/hotel transfers

Available Extensions:

- Inland Sea - KYOTO, HIROSHIMA, TOMONOURA, KURASHIKI, OKAYAMA & OSAKA
- Trans Kyushu - FUKUOKA, BEPPU, MT. ASO, KUMAMOTO, NAGASAKI & KYOTO
- SAPPORO & KYOTO

ORIENT TRAVEL BARGAINS

TOKYO 8 DaysFrom \$899
HONG KONG 7 DaysFrom \$1098
BANGKOK 7 DaysFrom \$1149

Tours include roundtrip air from the West Coast on UNITED AIRLINES, roundtrip airport/hotel transfers, accommodations and a half-day sightseeing tour. Extensions and optional tours available!

SENIOR CITIZENS

IF YOU'RE 62 YEARS OR OLDER you can take advantage of CONTINENTAL AIRLINES FREEDOM TRIPS certificates. FREEDOM TRIPS allow you to travel anywhere Continental flies in the Mainland U.S., Hawaii and Alaska. You'll use one FREEDOM TRIPS certificate for each one-way trip within the Mainland U.S. Travel to/from Alaska and Hawaii will require two certificates per one-way trip. Travel is permitted seven days a week (based on availability). Reservations must be made 14 days in advance and you can visit for as long or short a period as you like.

4 Certificates\$384.00
8 Certificates\$640.00

Certificates are valid for one year from date of issue. Certain black out dates apply.

ALASKA WEEKENDS

Package includes roundtrip coach class air aboard ALASKA AIRLINES between city of origin and Juneau, Anchorage or Fairbanks; hotel accommodations for the number of nights selected; roundtrip transfers between airport and hotel and all applicable taxes.

ANCHORAGE WESTMARK

2 night package\$617.00
3 night package\$653.00

WESTMARK FAIRBANKS

2 night package\$627.00
3 night package\$664.00

JUNEAU BARANOF

2 night package\$525.00
3 night package\$562.00

Valid from Los Angeles, Burbank, Ontario, Orange County, Long Beach and San Diego. Other departure cities available. Rates are based on double occupancy.

WE CAN ASSIST YOU WITH ALL YOUR TRAVEL NEEDS!!!
PLEASE TELL US WHICH DESTINATIONS INTEREST YOU,
WE WILL BE HAPPY TO SEND YOU MORE INFORMATION!!!

ALASKA SALMON - PACIFIC HALIBUT FISHING

NO EXPERIENCE NECESSARY BUDGET RATES

- 24' or 26' Cabin Cruisers
- Fully Guided Fishing
- Top of the Line Tackle & Equipment
- Gen. Mgr. - Richard Yamada

ALASKA CONNECTIONS
Shelter Lodge
Anchor Point Lodge
JUNEAU, ALASKA

CALL NOW! 1-800-877-2661