



Pacific Citizen

National Publication of the Japanese American Citizens League

Educating
the young
—page 4

(75¢ Postpaid U.S.) Newsstand: 25¢

#2699/Vol 116, No. 8 ISSN: 0030-8579 701 East 3rd Street, Suite 201, Los Angeles, CA 90013 (213) 626-6936 Friday, February 26, 1993

CLYDE PRESTOWITZ

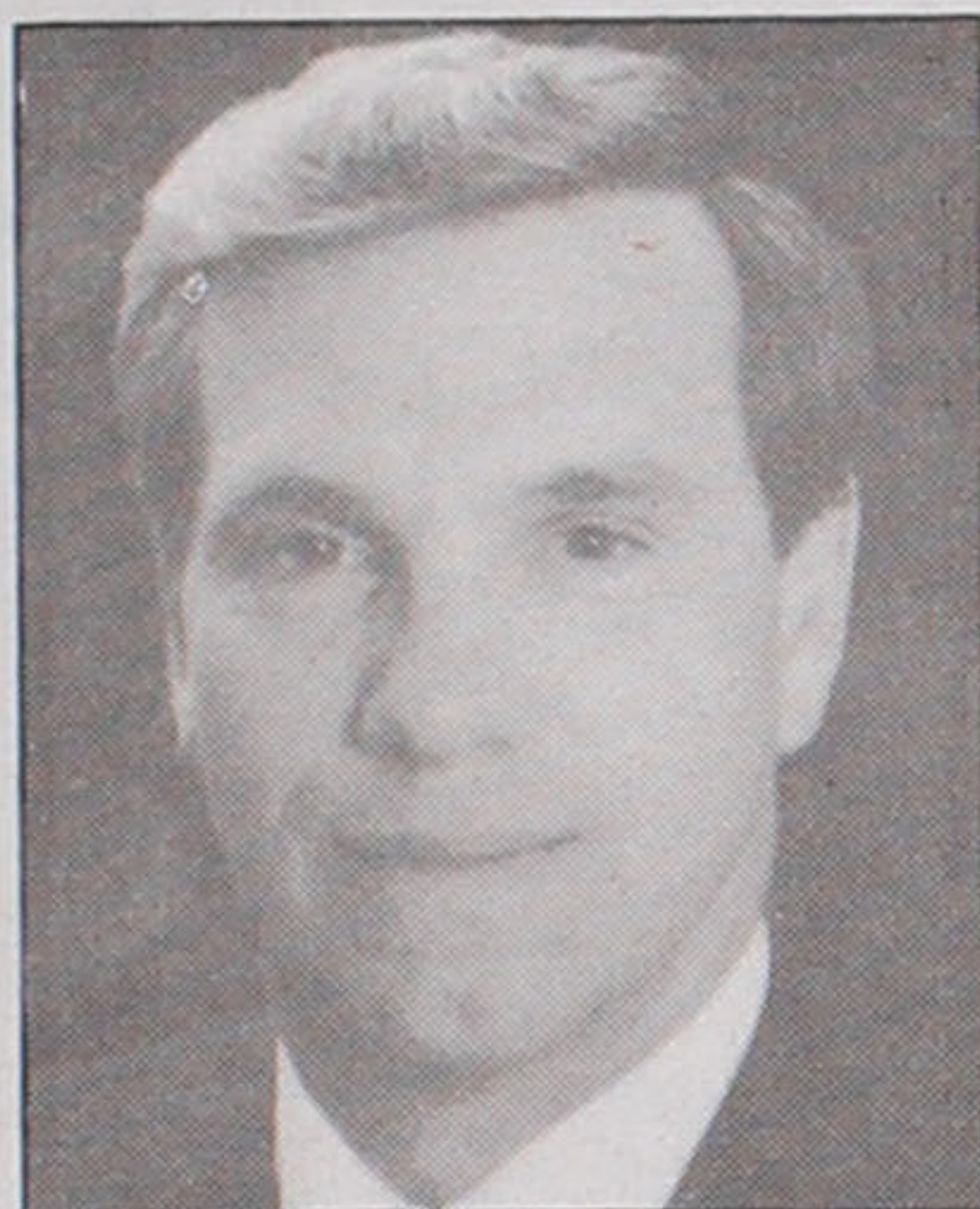
Assessing Clinton

U.S.-Japan expert likes economic priority plan

Former Reagan appointee says president's ideas are dramatic and necessary

By GWEN MURANAKA
Assistant editor

While not getting into the specifics of the Clinton economic plan, Clyde Prestowitz, Jr., a leading expert on U.S.-Japan relations, had high praise for Clinton's state of the union speech.



CLYDE PRESTOWITZ
Supports Clinton plan

"I believe, in his speech, Clinton has taken a dramatic, historic direction," said Prestowitz, founder and president of the Economic Strategy Institute, speaking Feb. 18 in an address sponsored by Town Hall of California and the Japan America Society of South-

See EXPERT/page 11

PROFILE

WHO: Clyde V. Prestowitz, Jr.

JOB: President, founder, Economic Strategy Institute; author, *Trading Places*

CREDENTIALS: Former senior associate, Carnegie Endowment; fellow, Woodrow Wilson International Center for Scholars; deputy assistant secretary of Commerce; acting assistant Secretary of Commerce; counselor to the Secretary of Commerce (1981-1986).

EDUCATION: B.A., Swarthmore College; M.A., East-West Policies and Economics, East-West Center of the University of Hawaii; M.B.A., Wharton Graduate School of Business. Also studied at Keio University, Tokyo.

From Japan . . .

The rest of the world scrutinizes America and its new president as well . . . Here's one view from Japan . . . page 9

President Bill Clinton makes his first state of the union address, driving home key points of his economic recovery plan. In the background are Vice President Al Gore and Speaker of the House Tom Foley.



Reactions

Staff reports

Will the country trudge in hopeful resignation to the beat of the Clinton drum? The tax-and-cut philosophy is still being driven home on the presidential road, and still being evaluated—by pundits and common folk alike. Some Americans uneasily approve; some begrudgingly so. Some don't at all.

In spite of an undaunting and polished speech to the nation on his economic plan, an uneasiness can be felt across the country. An underlying hope to erase the deficit has overlays of doubt, it would seem.

Clinton calls for sacrifices at the tax-and-cut altars. But is more less, or less more? . . . More or less, some might guess.

Are we headed for an entrenchment of doing more with less—or perhaps doing without? Is this a new spin or an old whirl? It is, most likely,



TARYNN YOKOMIZO



GRAYCE UYEHARA



JON KAJI



BILL MUKAI

Clinton's days of reckoning, days of beckoning. And austerity may be steering the flagship, searching for stability over the economic mood swings of the past.

It's not just the president checking
See REACTIONS/page 6

Tri-District event exhibit rates set

Gearing up for the April 2-4 JACL Tri-District Conference, the planning committee announced the rates for exhibit tables and booklet advertisement rates.

The exhibit tables will be in a designated hall in the Westin South Coast Plaza. The event showcases various vendors, corporations and non-profit organizations. Rate for exhibit tables is \$250. Information: call Carrie Okamura at 714/894-9092.

The Tri District Conference booklet will be distributed to each conference participant. The advertisement rates are: \$400, full page; \$250, half page; \$150, quarter page, and \$50, business card. Information: Ruth Mizobe at 714/647-6969.

Registration information for the three day conference is available from Ruth Mizobe and B.J. Watanabe, 714/779-7140. For hotel reservations at the Westin South Coast Plaza, call 800/228-3000 or 714/540-2500 and ask for the JACL conference rate of \$67 per room.

Accused of racism, Spokane Democrats asked to resign

Spokane Mayor Shari Barnard Feb. 19 called for the resignation of two Democratic officials following accusations of racial epithets and gestures, according to a report in the *Spokesman-Review*.

Barnard, in a letter to state and county Democratic officials, called for Marge Davis and Betty Drumheller to quit their positions within the Democratic party and apologize to the citizens of Spokane. "I will not stand for any kind of

harassment," said Barnard speaking to the *Spokesman-Review*. The mayor, a long-time Democrat, said that she will ask the Spokane Human Relations Commission to step in if the party refuses to take action.

"It isn't so much the incidents but the actions following the incidents," said Barnard.

Davis, Spokane state committee-woman, is accused of calling a local hotel owner Patrick Ng a "Chink"

See SPOKANE/page 11

Sentencing set for murderer of Issei woman

The date for the sentencing of Jeremy Brinkley for the burglary, rape and homicide of Chiyoko Kono has been rescheduled for March 12, according to Elisa Kamimoto, JACL Central California regional director.

Brinkley confessed to the brutal crimes against the 87-year-old Issei woman, as well as to the burglary and rape of a 68-year-old woman.

Originally set for Feb. 19, the sentencing was postponed because presiding Judge Gene Gomes had a schedule conflict. Brinkley will be sentenced in Fresno, Calif., Superior Court for the 1990 Selma crimes.

Still seeking redress recipients

Efforts by the Office of Redress Administration to contact approximately 900 potential recipients by April 30 were accelerated on Feb. 19. A list of persons who have not responded in more than six months was given to Japanese American community groups in various cities to locate the whereabouts from family, friends and organizations.

"Our goal is to ready all of the remaining cases for payment by April 30 so they can be paid in October, 1993," ORA administrator Paul Suddes said. ORA had requested essential papers to verify them as "eligible for redress payments," he added.

ORA HELPLINE: 202/219-6900; or 202/219-4710, telephone device for the hearing impaired. Operates M-F, 9:30 a.m. to 4:30 p.m., eastern standard time.

Asian Pacific groups file amicus brief supporting hate crime law

Wisconsin hate crimes law could have wider implications

Filing an amicus brief in support of a Wisconsin hate crimes law, a group of Asian Pacific American civil rights organizations, including JACL, recently announced their support in the wake of a U.S. Supreme Court challenge.

The other organizations which make up the group include: National Asian Pacific American Legal Consortium (composed of the Asian American Legal Defense and Education Fund, the Asian Law Caucus, and the Asian Pacific American Legal Center), American Citizens for Justice, Asian Law Alliance, Chinese for Affirmative Action, Chinese American Citizens Alliance, Committee Against Anti-Asian Violence, National Asian Pacific American Bar Association and the Organization of Chinese

Americans.

The organizations, which are all members of the National Network Against Anti-Asian Violence, filed an amicus brief in support of the state of Wisconsin in the case of *Wisconsin v. Mitchell*, a challenge to hate crime legislation which could have implications on hate crime laws throughout the country.

Angelo Ancheta, staff attorney, Asian Pacific American Legal Center and lead counsel on the brief, said, "The case is especially important because the ruling could affect other anti-discrimination laws like Title VII of the Civil Rights Act of 1964 that outlaws discrimination in the workplace." (P)

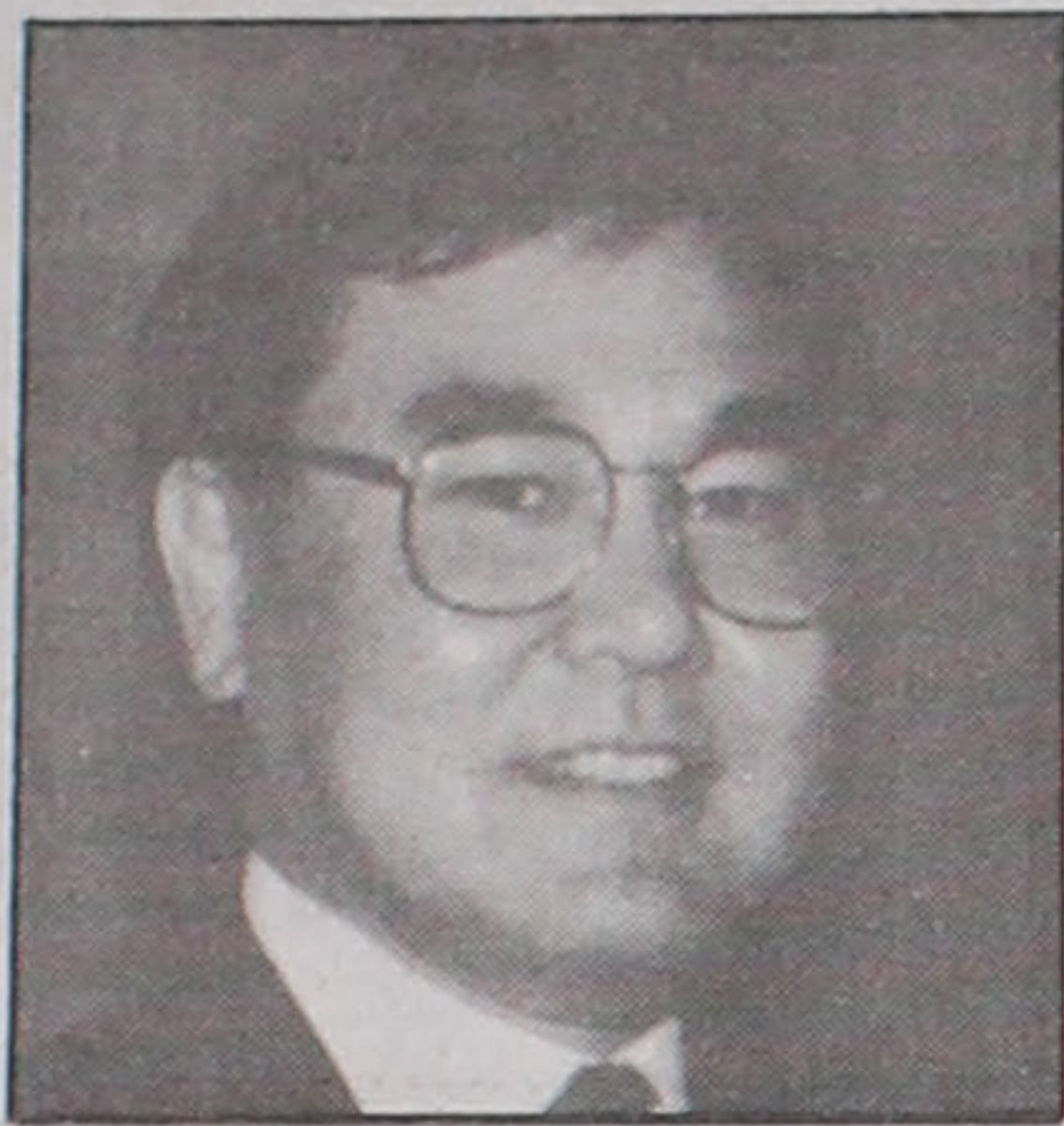
Yoshino, Yoshimura honored by Asian American group

Bill Yoshino, JACL Midwest regional director, was honored with the Pan Asian American Award for 1993 by the Asian American Coalition of Chicago.

Yoshino was honored for his numerous accomplishments in Chicago and in the state in addressing the concerns of the Asian American community, which included anti-Asian violence, legislative initiatives for the Asian American community and empowerment in state and local governments.

The coalition also recognized Kiyo Yoshimura as the recipient of the community service award from the Japanese American community.

A retired social worker, Yoshimura is a member of the National Association of Social Workers Committee on Racism. She serves on the board of various organizations, including the Fellowship of Asian Americans, the Japanese American Service Committee and the Heiwa Terrace senior residence. Yoshimura is currently assisting the Chicago Japanese American Historical Society in its compilation of an oral history of Japanese Americans in



BILL YOSHINO
Receives Pan Asian Award

Chicago.

The awards were presented at the 10th annual Lunar New Year Celebration held Feb. 13, an event hosted in rotation among each of the Asian ethnic communities. Among the 1,000 in attendance were numerous dignitaries from throughout metropolitan Chicago's Asian American communities, as well as Illinois Gov. Jim Edgar, Sens. Paul Simon and Carol Mosely-Braun, and others from the state's political community. (PC)

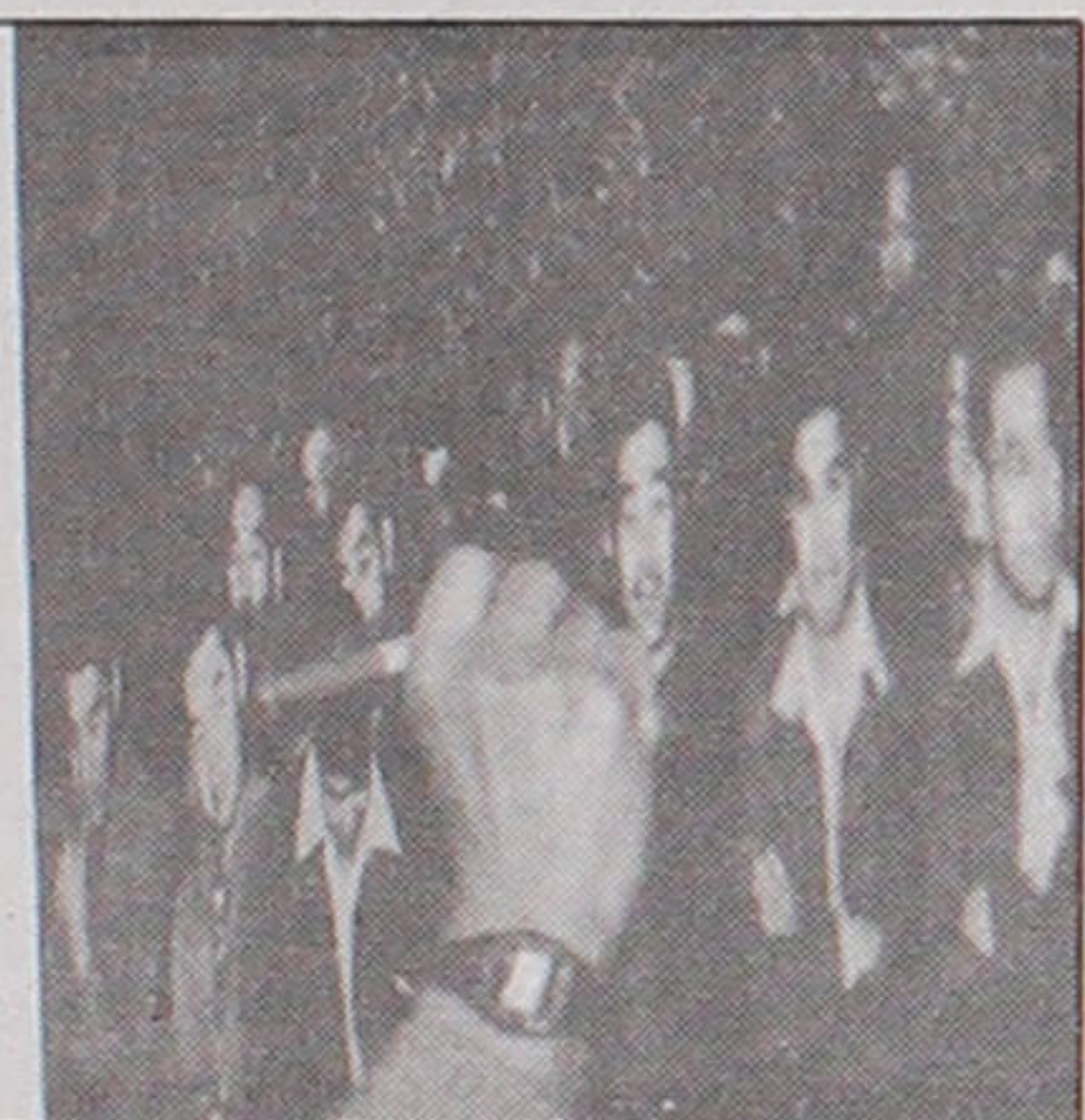
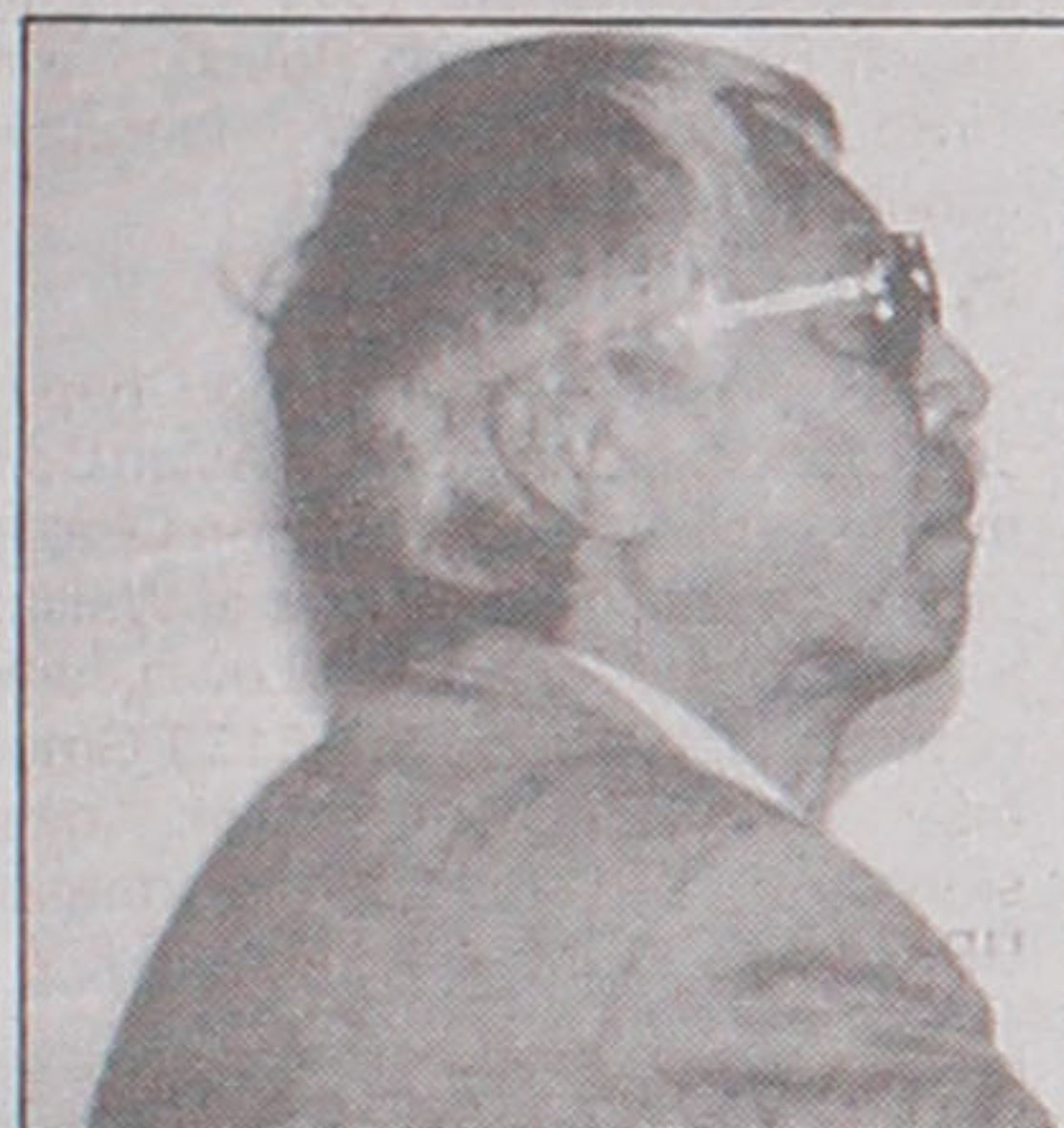


Photo: JEM LEW

SIGNING—Tak Hoshizaki signs his name on 1944 photo of resisters.

Wartime draft resisters reunite

The Heart Mountain draft resisters shared remembrances of their struggles in a ceremonial homecoming Feb. 21 at the Centenary United Methodist Church.

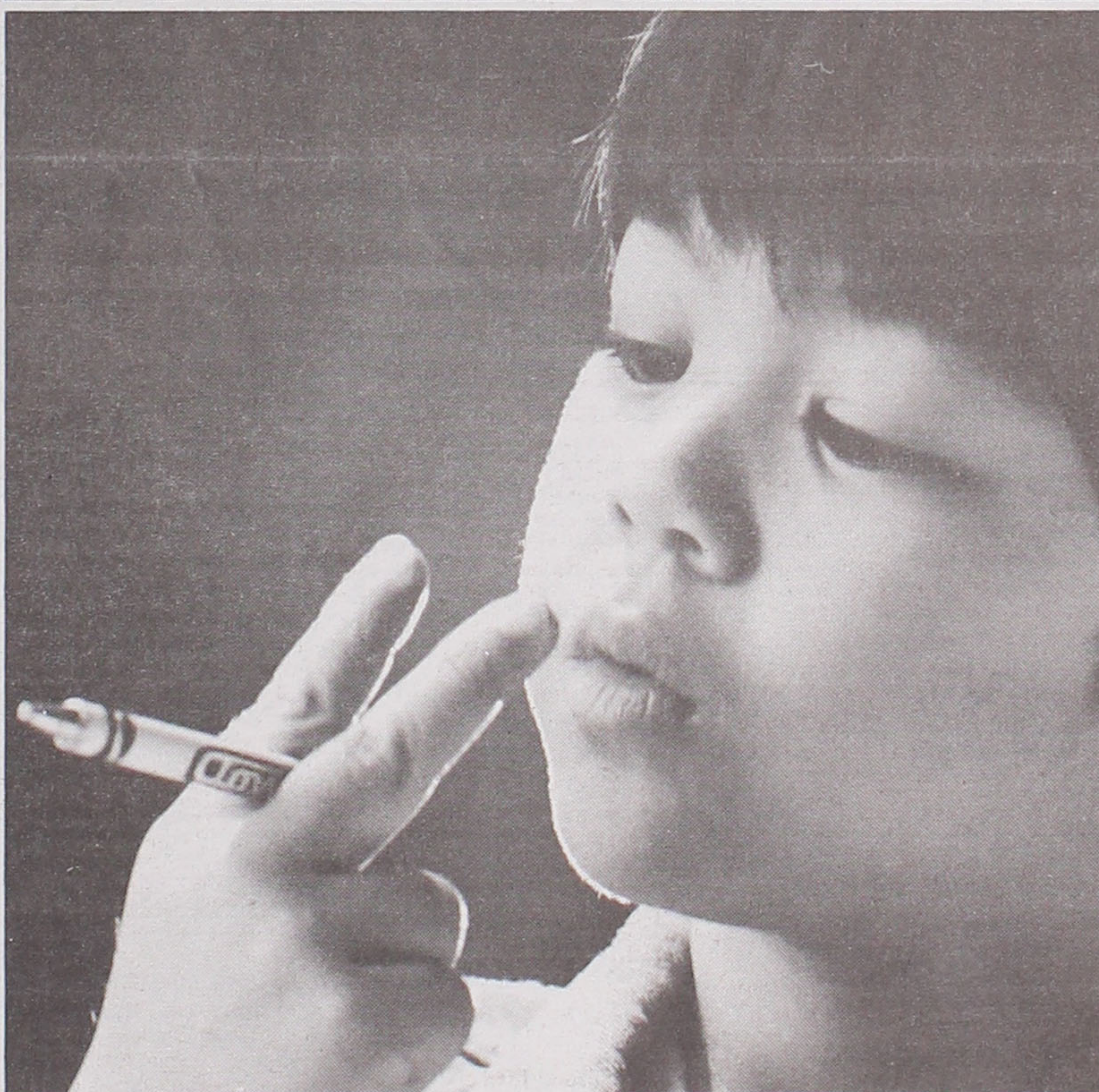
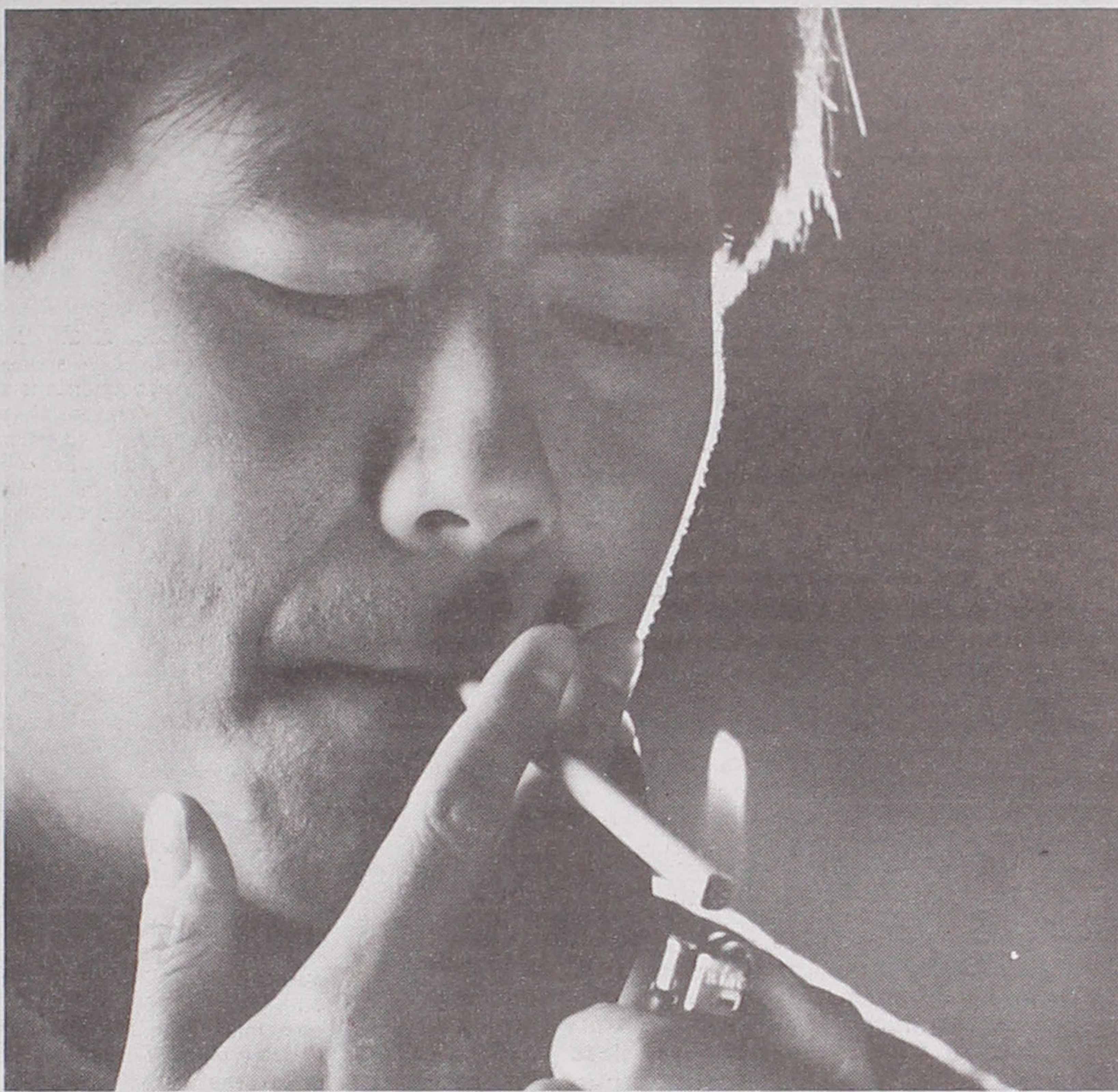
An estimated 400 people watched as Fair Play Committee members Frank Emi, Mits Koshiyama and Gloria Kubota, wife of FPC member Guntaro Kubota reminisced and read from "The Fair Play Committee Papers," articles written before and after the war by participants.

Other participants in the program included Lawson Inada, Dwight Chuman, and Grace Kubota Ybarra.

In 1944, 63 of the Heart Mountain resisters were tried and convicted of draft evasion and sentenced to average terms of two and a half years.

JACL, in 1990, offered belated recognition to the Heart Mountain Resisters saying "they too deserve a place of honor and respect" in Japanese American history. During the war, JACL opposed the draft resisters.

Like Father Like Son



Of course, you don't want your children to smoke. But, if you smoke, the chance of their becoming smokers doubles compared with those children whose parents do not smoke. You are the model to your children. And they learn from you. Not what you say. What you do.

In the United States, over 1,100 people die of smoking-related diseases everyday. And countless more are tortured by smoking-related illnesses, such as lung cancer, heart attack, stroke, and emphysema...

Don't let your children inherit this deadly habit. If you don't want them to start, **it's time to stop.**

FRED HALL'S LOS ANGELES

WESTERN FISHING TACKLE & BOAT SHOW

MARCH 3-7, 1993
Long Beach Convention Center
Take the LONG BEACH FREEWAY to the Door.

KIDS FREE
under 12 with parent

NATION'S GREATEST OUTDOOR RECREATION SHOW
Latest in fishing and boating equipment on display.
Worldwide fishing and travel resorts! Hundreds of '93 boats from inflatables to houseboats... *Camping Expo '93!*

FISHING BOATING TRAVEL CAMPING

Free SPORTMART ARCHERY ARENA (Professional Archery Demos)
Free DAILY HOME FIREARM SAFETY CLASSES • FREE KIDS AIR GUN RANGE
Free THE WORLD'S GREATEST EXPERTS ON FISHING BOATING TRAVEL CAMPING & SPORTS SHOOTING • Free HUNTING DOG EXHIBITIONS (in Water Demos) • Free GAME FISH SIMULATOR • THE ORIGINAL SNOOPY (On Weekend)

FREE • FREE • FREE • FREE • FREE • FREE • FREE

TURNER'S OUTDOORSMAN
Fishing, Sport Shooting, Boating, White Water Rafting & Travel Seminars By Experts
FISHING & TRAVEL THEATRE

SPORTMART "BASS BIN" - World's largest mobile aquarium & lure demonstration tank.
FISHING HOLE - 1 free trout for kids
Free fish hats to first 250 kids daily
BEGINNERS CAMPING & FISHING SCHOOL

FISHING & HUNTING RESORTS • FREE TACKLE DRAWINGS
Win FREE Vacations from Willow Beach Resort, Seal Beach Sportfishing
* Ken Stewart's Sportsmens Tours

SHOW HOURS: Wed-Fri 2-10 pm • Sat 10 am - 10 pm • Sun 10 am - 7pm



Educating young people

Jamalca "Selectively Yours"
 EXCLUSIVE SELECTION OF private villas & condos on island's North Coast - Beach, waterfront, spectacular views, owner represented managed, inclusive full staff, airport transfers, diverge packages - tailor made arrangements to suit specific needs - personalized attention at its best.
 Pollie Taylor (Owner) - Selective Vacations
 (809) 974-5187 (800) 262-2727
 Fax: (809) 974-2359

Vacation Rentals
Bahamas/Free Golf
 Condos. 2 Bdrm. Beachfront.
 Scuba diving, tennis, etc.
 (414) 251-6881 (800) 527-4710
 N. 7 W. 16549 Appleton Avenue
 Menomonee Falls, Wis. 53051

ED SATO
Plumbing & Heating
 Remodel and Repairs, Water Heaters
 Furnaces, Garbage Disposals
 Serving Los Angeles, Gardena
 (213) 321-6610, 293-7000, 733-0557

OCEAN FRONT GETAWAYS
 Experience the joys of Life in Beautiful SANTA CRUZ COUNTY
 1 to 5 Bedrooms • Fully Furnished
 PAJARO DUNES on Monterey Bay
 APTOS • RIO DEL MAR
 Ron Sawyer & Associates
 (800) 752-0091 (408) 763-0186
 101 Shell Drive Watsonville, CA 95076

ALOHA PLUMBING
 Lic. #440840
 —SINCE 1922—
 777 Junipero Serra Dr.
 San Gabriel, CA 91776
 (213) 283-0018

Commercial & Industrial
Air Conditioning and Refrigeration
 Contractor
Glen T. Umemoto
 Lic. No. 441272 C38-20
SAM REIBOW CO., 1506 W. Vernon
 Los Angeles - 295-5204 - Since 1939

RED SKELTON
"I LOVE YOU"
 Lithograph
 NOW \$995.00
 Limited Supply Soldout Edition
 other Editions available
 at reasonable prices

GREETINGS TO THE JAPANESE COMMUNITY

ALTA SNOWBIRD PARK CITY
 ● Condos ● Homes ● Apartments
 Air Fare ● Car Rental
 TUFT SKI TOURS, homes, condos,
 luxury to economy, minutes to lifts, or slope side,
 airfare, car rental, 1-800-264-8754
 or 801-942-2219
 9302 South Quail Run Drive
 Sandy, UTAH 84093

White's Collectables
 and Fine China
 616 E. First
 P.O. Box 680 Newberg, Ore. 97132
 (503) 538-7421 Fax: (503) 538-6886
 Mon thru Sat 10-5

TOYO Myatake STUDIO
SAN GABRIEL VILLAGE
 235 W. Fairview Ave.
 San Gabriel, CA 91776
 (213) 283-5685
 (818) 289-5674

J.apanese A.merican KAMON
 The Original BRONZE "JA. KAMON"
 Individually handcrafted Kamon, designed especially for Japanese Americans to pass on to their descendants. A lasting, one-of-a-kind record created to commemorate the Issei in your family!
 • KAMON RESEARCH / CONFIRMATION SERVICE
 • KAMON GUIDE BOOKLET (\$5.00 Postpaid)
 • BASIC FACT SHEET ON YOUR SURNAME. (Send \$10.00 w/kanji writing of name.)
 Mail Orders / Inquiries to: YOSHIDA KAMON ART
 P.O. Box 2958, Gardena, CA 90247-1158 • (213) 629-2848 for Appt.
 KEI YOSHIDA, Researcher / Artist NINA YOSHIDA, Translator

Special to the Pacific Citizen

Twenty-five Asian American and Pacific Islander teenagers gathered recently in Los Angeles for a session in intercultural communication. The one-day workshop, sponsored by the National Conference of Christians and Jews (NCCJ), was the second of two experimental programs for teens from ethnic minorities and new immigrant families.

The young people, students from the Los Angeles Unified School District and San Gabriel and Alhambra high schools, held small group discussions, assisted by NCCJ Asian American facilitators, to explore issues surrounding their ethnicity and ethnic identity and prejudice. They were asked to examine their own perceptions about different Asian Ethnic groups, as well as the stereotypes non-Asians hold of them.

The participants were challenged by a values clarification exercise in which each was asked to prioritize his or her own value system with regard to intercultural communication and other issues almost all teenagers face in America.

"This part of the day was very powerful for many in the group," said conference program coordinator Lecia Brooks. "Recognizing that your personal values may not match those of your family or its traditions can cause (feelings of) guilt, but for teens from Asian communities, where traditional family values are very strong, the realization

Teens hold intercultural dialogue



DIALOGUE—Students from the Asian American and Pacific Islander communities explore issues surrounding cultural diversity at a special one-day workshop sponsored by the National Conference of Christians and Jews in Los Angeles.

of this internal dilemma can be especially painful." The workshop series is part of a county-wide disaster recovery program called Project Rebound, a joint effort of the NCCJ and the Los Angeles County Department of Mental Health. The program was funded by a nine-month Federal Emergency Management Administration

grant. The NCCJ, a 65-year old non-sectarian human relations education and training organization, sponsors the Brotherhood/Sisterhood USA camps each summer and conducts numerous year-round workshops and leadership development programs. Information: 213/385-0491. (P)

Learning about camp

San Francisco-area children experience internment in a program sponsored by the Japanese American Historical Society . . .

By **CHIZU IYAMA**
 Contra Costa Chapter, JACL

SAN FRANCISCO—It was an excited group of children who recently lined up outside of the room waiting to view the exhibit "Children of the Detention Camps" and "Enemy Alien—A

19th as the "Day of Remembrance." Sponsored by the National Japanese American Historical Society (NJAHS) and Japantown Art and Media (JAM) workshop, the exhibit consisted of 35 photos, artifacts, an enlarged picture of a camp, drawings and wood sculptures made in camp, and a life-sized depiction of a woman on a farm. It was held at the hospitality room of Union Bank in San Francisco's Japan Center. "The children were so well behaved, and so interested in our stories" declared Marshall Sumida and Ernest Iiyama, docents who made the exhibits come to life with their personal remembrances. "For some of the teachers and aides, this was the first time they heard about the detention camps" mused Amy Funabiki who helped to put up the exhibit. Some of the teachers prepared their students by assigning them activities in connection with the exhibit. The children came from first grade classes to the sixth grade, and made some

'The children were so well behaved, and so interested in our stories.'

—MARSHAL SUMIDA
 ERNEST IYAMA

Personal Story of Kiyo Hirano." They were students of the San Francisco Unified School District (SFUSD), studying the impact of the Japanese American World War II experience as part of their social studies program. Every year, the SFUSD focuses on February

thoughtful remarks, as well as child like responses to questions. When asked what they would bring if they were sent away, not knowing where they were going, nor what kind of conditions they would encounter, and could only take what they could carry, some of the first grade boys shouted, "Guns!" Their teacher gulped and replied that guns would have been confiscated. "Then we'll shoot them," announced one little boy with a big grin. Girls spoke about taking photos of their homes, their pets and their friends so "they won't forget them." Other practical children shouted, "Backpacks . . . so we could bring more things." Some girls declared, "We won't go." When pressed as to what they would do to evade the detention camps they asserted they would resort to plastic surgery or wear buttons which had enscribed "I am Chinese." The story of Mrs. Hirano, an Issei woman in camp, intrigued the children, as one wide-eyed little girl said respectfully, "She must be very very old." Another playful boy kissed the life-size replica of Mrs. Hirano working on a farm. "We enjoy working with the S.F. School District on this annual event" stated Roz Tonai, executive director of the NJAHS. "Ms. Chris Hiroshima and the teachers have been so cooperative. We believe that the exhibits, and especially the docents with their stories of their incarceration help children understand the lessons of the detention camps." Docents included Kiku Funabiki, Yukio and Sue Hayashi, Chizu and Ernest Iiyama, Jim Kajiwara, Sox Kitashima, Wally Nunotani, Marshall Sumida, and Babe and Helen Utsumi. (P)



Stay with us!

The Neptune Building invites the Japanese Consulate to stay in the community. Move into 701 E. 3rd St. across from Yaohan Plaza.

WE OFFER

- ★ THE TOP TWO FLOORS
- ★ YOUR NAME ON THE BUILDING
- ★ PRIVATE ELEVATOR
- ★ HIGH SECURITY
- ★ UP TO 70 PARKING SPACES

All of this at the BEST LEASE RATE in town!

Please call Cutting/MacVaugh at 213/620-0030

For smaller tenants we have space from 500 sq. ft. to 2,000 sq. ft ready to occupy.

Japanese American National Museum

'We Shall Overcome' exhibit in Little Tokyo

By HARRYK. HONDA
Editor emeritus

Seven Japanese American and one Japanese Canadian experiences involved during the tumultuous civil rights movements of the 1960s are in the special exhibit through the end of February during Black History month at the Japanese American National Museum in Little Tokyo.

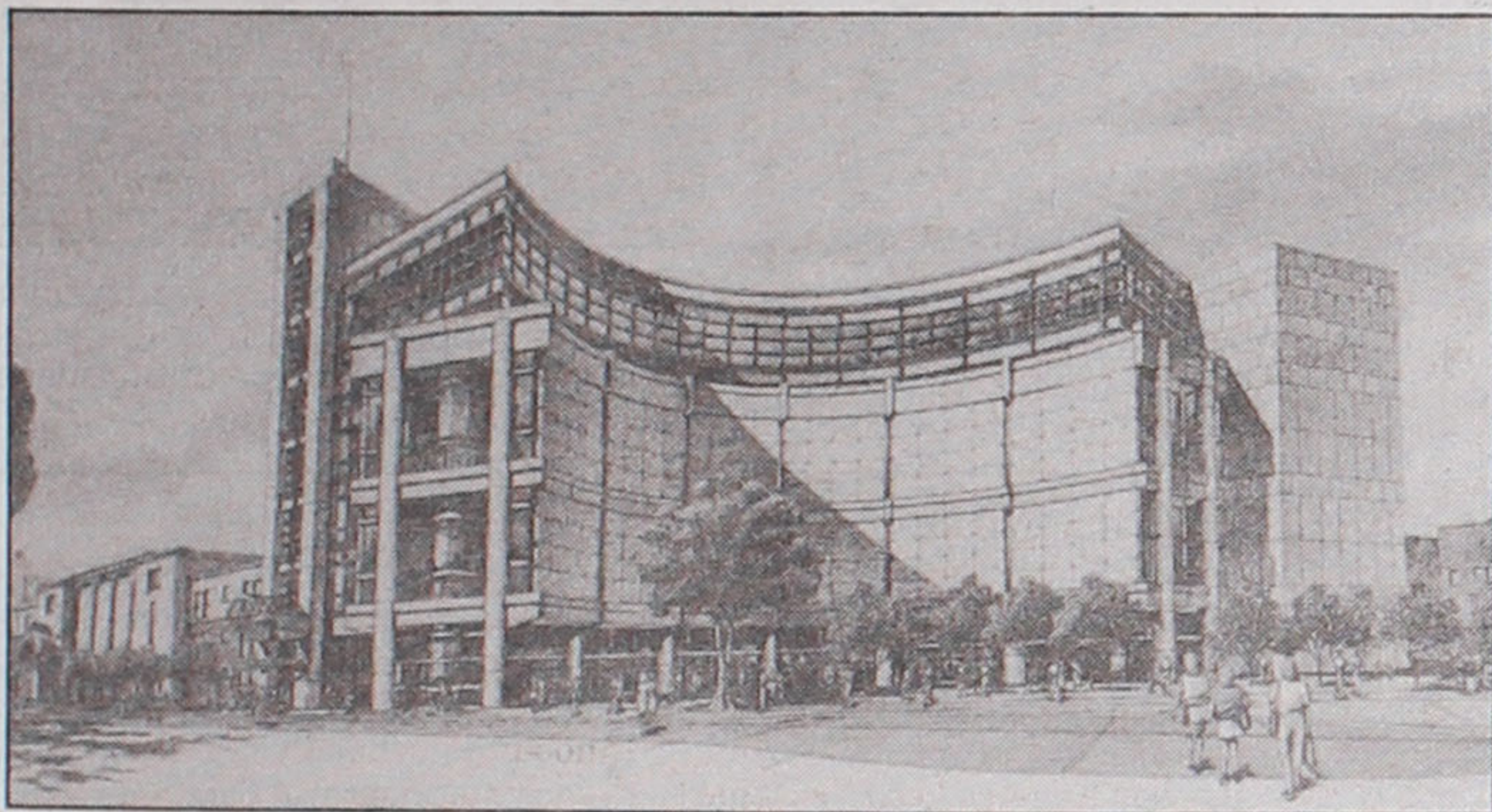
Rare photographs, statements and two front pages from the *Pacific Citizen* (1963) are included. Works and statements are from: George Inadomi, Yuri Kochiyama and her daughter Audee Holman, K. Patrick Okura, Hideko Patricia Sumi, Paul Tsuneishi, the Rev. Michael Yasutake, and Canadian-born Tamio Wakayama. Okura declared that "without the record established in 1963 (when JACL participated in the March on Washington with Dr. Martin Luther King, Jr., and other Black leaders), we would not have had the support of civil rights leaders for redress."

The exhibit is on display downstairs in the Legacy Center.

BLACK HISTORY MONTH

was observed by the Japanese American National Museum in Little Tokyo with two front pages of the *Pacific Citizen* recounting the JACL participation in the August, 1963, "March on Washington for Jobs," photographs of the march and a statement by K. Patrick Okura. The special Legacy Center exhibit, "We Shall Overcome," ran throughout February.

Photos:
HARRY K. HONDA



TALK OF THE TOWN—Presenting being called the "Pavilion," a crescent-shaped five-story addition to the Japanese American National Museum, designed by architect Gyo Obata of St. Louis, is unveiled at the 1993 annual meeting in Los Angeles Feb. 13. It will provide 65,000 sq. ft, triple the space of the museum at the old Nishi Hongwanji in Little Tokyo.

U.S.A. WATER PURIFIERS
U.S.A. Mfg. seeks distributors and Exclusive Representative for S. East Asia for our full line of residential & industrial products. Private label, protected territories & qualified CREDIT AVAILABLE.
UNIVERSAL WATER INDUSTRIES, INC.
(305) 628-2848 Fax: (305) 628-2774
5451 159th Street Miami, Florida 33014

PRO FOOTBALL
Need investor for Seattle, Oakland, Los Angeles. Requirement, \$250K cash Franchise fee & \$2.75 Mil letter of credit.
Call: (206) 659-1163 Tuesday & Thursday, 5-8 P.M. PST, anytime weekends or write: 11424 36th Dr. NE #61, Marysville, WA 98271.

MEXICO Government contracts. Must expand. Need capital, high returns. Secured.
FREE 22% (818) 858-2035 Fax: (818) 339-3499
TRADE 100 N. Barranca, Suite 735 West Covina, CA 91791

BREITON WOODS (310) 447-6234
FOREIGN CURRENCY EXCHANGE
HOURS: 9:30AM - 5:30PM MON-FRI 10AM - 12NOON SAT 11659 SAN VICENTE BLVD LOS ANGELES, CA 90049

WATER CONSERVATION
Manufacturer seeks additional Distributors & Representatives, to market patented, IAPMO - approved toilet water conservation devices, which have been proven to save up to 20 gallons of water per person/day. Excellent territories still available.
Call (509) 575-0239 Fax (509) 248-9324.

RICHARD WOLFFERS AUCTIONS INC.
Rock and roll, Hollywood and Historical Memorabilia Auction, March 17, 1993. Call, write or fax for your catalog - \$10 each.
Contact: Richard Wolfers Auctions, Inc. 133 Keamy St., #400 San Francisco, CA 94108 (415) 781-5127 - Fax (415) 956-0483

CORVETTE 1993 RAFFLE
700 tickets only • \$100 Each
Drawing March 27, 1993
LONG RIDGE SCHOOL
478 Erskine Road
Stamford, Conn. 06903
Call weekdays: (203) 322-7693

VAIL, COLORADO BEAVER CREEK
ski-in, ski-out luxury condos
Rentals & Sales
(800) 627-VAIL (USA)
(303) 476-8800 (Worldwide)
(303) 476-8671 (Fax)
Vail Realty & Rental Mgt.
302 Hanson Ranch Road
Vail, CO 81658

If you are a company looking to relocate in the New England area and are looking for an electric utility that will keep your company energized, come to West Boylston, MA. West Boylston has very competitive electric rates and an active Economic Development Committee which can give you information on potential tax relief.
West Boylston is located in Central MA and:
• Borders Worcester, the 2nd largest city in MA
• Has excellent school, water, police and fire
• Is 20 minutes from Worcester Municipal Airport
• Is 40 miles from Boston
Economic Development Committee
(508) 835 6091
Economic Development Rates
(508) 835 3681
Fax: (508) 835 2952
4 Crescent Street
West Boylston, MASS 01583 USA

Japanese Phototypesetting
TOYO PRINTING CO.
309 So. San Pedro St., Los Angeles 90013
(213) 626-8153

Mrs. Friday's
DELIGHTFUL seafood treats
DELICIOUS and so easy to prepare
MRS. FRIDAYS
Gourmet Breaded Shrimps and Fish Fillets
Fishing Processors, 1327 E. 15th St., Los Angeles, (213) 746-1307

CONTAMINATED SITES
Buy Investigate Remediate Close Sites
Call:
Joseph Hannahey, P.E.
H.E.M.C. Environmental Management Corporation
(800) 371-HEMC

Gallery Raphael
FINE ART • CUSTOM FRAMING • OIL PORTRAITS
Grand Opening Sale
— Custom Framing —
Exclusive Fine Custom Framing
Very Large Selection Free Pick Up & Delivery
We will Hang your paintings for FREE!
30% to 60%
OFF ORIGINAL PRICES
with this ad through April 1993
— Fine ART —
Fine original oil paintings on exhibition from many known artist.
Continuous silent auction Restorations
Evening Concerts
Thursday, Friday & Saturday between 6 & 9 p.m.
16101 VENTURA BLVD. #230 (at Woodley)
ENCINO, CA 91436 • (818) 996-0027

THE BEST OF THE CLASSICS ...
M
BRUNO MAGLI
\$99⁰⁰ - \$119⁰⁰
Thousands of Pairs Available: 3 to 11; 4A, 3A, 2A, B and C.
Danielle's
354 North Bedford Drive
Beverly Hills, California 90210
Store Hours: Mon - Sat 9:30 - 5:30
Telephone: (310) 274-8243

ONLY A CRUSHED ROSE
By Dr. Mitsuo Miura

This cannot be a mere display of artifacts which were created during the concentration camp internment. This is an emotionally revealing true story of what had resulted because of The Executive Order No. 9066 of February 19, 1942, and the unprecedented and unjustifiable evacuation of the innocent and bewildered people, the men, the women, the children.

This reveals the story of the uprooting and the severing of their vitality, their forceful concentration, their subjection to severe and intense suffering and deep psychological trauma which could not become completely apparent because of its emotional profoundness, and of the many who were responsible, who had hoped that the prevailing steadfastness of innocence of those people would never endure nor survive the ordeal.

Beyond the countless strands of barbed wire, which was responsible for the depressing atmosphere of hopelessness and physical and emotional torment, the skies above were much brighter and farther, beyond the distant horizon, there continued persistently an invisible and imperceptible demonstration against the forceful and inhumane deprivation of their cherished tranquility which had once belonged to the praiseworthy and proudly innocent people.

Considering all that had happened, and the overwhelming evidence of total disregard for their inalienable rights, their innocence, and guiltlessness, and their unblameworthiness, in truth, a rose had been crushed and was willfully cast behind barbed wires.

This, then, is the complete display of the true revelation of their bravery and steadfastness, their integrity, and eventually, of their distinguishable triumphant ascension.

This, indeed, is a dream to be remembered; it was only a crushed, rose, but a rose which refused to remain undeservedly crushed.

Aikido & Self Defense
Japanese Iaido Swordsmanship

**AIKIDO CENTER
OF LOS ANGELES**

Little Tokyo/Downtown LA
940 East 2nd St. #7
Los Angeles, CA 90012

(213) 687-3673

Resident Chief Instructor:
Kensho Furuya, 5th dan.

Carat
of Karat



Japanese Charms
Japanese Names
Japanese Family Crests

12558 Valley View
Garden Grove, CA 92645
(714) 895-4554

Make A Bundle Without Getting Tied Up.


With the Sumitomo Time Deposit Accumulator Account, you'll make a bundle. But unlike most high-yield accounts, this one offers flexibility, too. Start with an initial deposit as low as \$500 and make additional deposits without extending the maturity date.

The Sumitomo Time Deposit Accumulator Account

- Allows for additional deposits
- Withdrawal feature available
- Interest higher than T-Bills
- \$500 Minimum Deposit

Then, after six months, the Time Deposit Accumulator lets you make a one-time withdrawal of any additional deposits and interest with no penalties. Giving you the flexibility to plan your finances around your needs, not ours.

For more information about the Time Deposit Accumulator Account, visit the Sumitomo Bank branch office nearest you.



Sumitomo Bank
Sumitomo Bank of California Member FDIC

Higher rates and different terms and conditions for initial deposits of \$100,000 and more. Substantial penalties apply for early withdrawal of funds.


NEW CARS **7.9%** APR
UP TO 5 YEARS
FREE LOAN INSURANCE
SIMPLE INTEREST

USED CARS **8.9%** APR
UP TO 3 YEARS
FREE LOAN INSURANCE
SIMPLE INTEREST

SECURED BY SHARES **6.5%** APR
UP TO 5 YEARS
FREE LOAN INSURANCE
SIMPLE INTEREST

Join the National JACL Credit Union. Call us or fill out the information below. We will send membership information.

Name _____
Address/City/State/Zip _____



**National JACL
CREDIT UNION**

PO BOX 1721 / SLC, UTAH 84110 / 801 355-8040 / 800-544-8828

ON the Agenda

By TAIHEI SHIMIN

PERSPECTIVES AND PAINT: The **Chicago Chapter, JACL**, recently scheduled a special event to recognize the 51st anniversary of E.O. 9066—a Day of Remembrance featuring Sansei re-creations of the Japanese American internment and resettlement. The program included a "History and Memory: For Akiko and Takashige," an autobiographical documentary by Chicago-born Sansei **Rea Tajiri** who re-created her family's past through personal recollections, archival film footage, Hollywood movies, footage shot in camp, and film of a 1988 family pilgrimage to Poston. Also featured was **Dwight Okita's** play, "The Salad Bowl Dance," a comedy-drama about a Nisei woman who comes to Chicago after internment. . . . You want dedication? How's this?—A gang of Chicago Chapter members marched down to the office on a recent Saturday and painted the place. The "Order of the Paint Brush" was awarded to **Carol Murakami** as fastest on the draw. "Best Dressed Painter Award" went to **Joy Yamasaki** (the Tai Guy saw a photo . . . well, maybe . . .) **Geoff Tani** got the "Best Artist Award." Other volunteers getting the brush-off: **Ross Harano** (even the prez was painting), **Janice Honda** (she's an interior designer and gave the place a better look), **David Igasaki**, **Nelson Kitsuse**, **Bill Mukai**, **Donna Ogura**, **Smokey Sakurada**, **Christine Takada**, **Eugene Yamamoto**, **Bill Yoshino** and **Carol Yoshino**. **Tad Tanaka** provided pizza—my kinda guy . . .

SEATTLE SERIES: I told you **Seattle Chapter, JACL**, was doing good things . . . The chapter recently announced its weekly workshop series from March 4 through April 8. If you're interested in similar programs, call these people: "Tax and Financial Planning," **Ray Ishii**, 206/720-5346; "Media Sterotyping," **Kip Tokuda**, 206/464-6151; "Interracial Families," **Janice Yee**, 206/587-4223; "Cooperative Pluralism" (multicultural education), **Joy St. Germain**, 206/459-6994; "Political Action: Our Right, Our Responsibility," **Arlene Oki**, 206/684-0106; and "You Are What You Eat," **Gail Tanaka**, 206/624-2907 . . .

GOING GOLFING: Some would say You Are What You Play—and golf is right up there with eating and breathing . . . Just ask 28 avid JACL golfers roundin' themselves up and headin' for Texas for the annual Houston Caper golf tournament March 13-19. **Mas Yamasaki** of the **Houston Chapter, JACL**, tells me that it's mostly Midwesterners participating, led by **Bill Yoshino**, Midwest regional director. **Lance Yamasaki** will host a down-home, Texas-style pool party at his place—called a—what'else?—hot tub happy hour. Check out the menu: Texas dishes, Tex-Mex, Cajun, Vietnamese, barbecue, steak and Japanese (Nah, Gail's right, You Are What You Eat) . . . Also featured: memorial tournaments honoring **Pete Fujitoka**, Detroit Chapter, and **Dr. Roy Sugimoto**, Houston Chapter. Magician **Roy Yee** of Detroit will make everybody disappear . . . The Houston Caper was founded by three former governors of the Midwest District, **Dr. Kaz Mayeda**, **George Sakaguchi** and **Mas Yamasaki** . . .

ALRIGHT, ARIZONA! The **Arizona Chapter, JACL**, is especially alert to hate crimes. In their newsletter, they print hotline numbers, including the U.S. Department of Justice (800/347-4283). Other numbers listed are the local Arizona Attorney General's office and the chapter's own Graffiti Hot Line number since the chapter has been victimized before . . . The entire state is still reading about the youths on trial for the murder of the Thai Buddhist monks near Phoenix. Chapter Vice President **Joe Allman** always keeps PC alert to new developments . . . Beginning in March, the Asian/Mexican Office promoting relationships among the local interests, Asia and Mexico will open . . .

EVENTFUL: The **Salt Lake Chapter, JACL**, presented its Feb. 6 "U.S. v. Korematsu: Reflections of the Struggle for Justice," with guests speakers **Dale Minami** and **Fred Korematsu** . . . Upcoming, according to President **Larry Grant**, is a May pilgrimage to the Topaz Relocation Camp site. Most of the participants will be coming from the San Francisco area for the May 29-30 event.

GOOD GOING: **Jon Kubokawa**, president of the **Diablo Valley Chapter, JACL**, and **Mary Kobayashi**, member, were recently honored by the Concord, Calif., Human Relations Commission. Jon received a civil rights advocacy award and Mary was given an inter-cultural award . . . That's real community activity . . .

Got a tip for Tai? Send your tidbits to PC at 701 E. 3rd St., Suite 201, Los Angeles, CA, 90013. Agenda is a roundup of organizational news which appears regularly in Pacific Citizen.

REACTIONS

(Continued from page 1)

the American pulse for economic approval. Everyone's interested in how individuals and groups have reacted.

Pacific Citizen, then, made a few checks around the country to get some reaction from the Asian American community to the Clinton plan. Here are some excerpts:

Julie Sasaki, 27, of the Detroit Chapter, JACL, didn't like the speech. "No, (I didn't) because in our part of the country, in the auto industry, we've had jobs cut. We've sacrificed greatly. We don't see the federal government as having a plan in hand," she said. "People wouldn't mind paying taxes if they knew what it was going for."

Sasaki, a buyer for the Automotive Division of Rockwell International, and an independent who voted for Ross Perot, said that Clinton's plan would hurt small businesses.

"Some of the legislation right now is good," she said. "There's solid thinking in it. But some of it is killing small companies, such as small auto suppliers."

In the East, Grayce Uyehara, 73, of the Philadelphia Chapter, JACL, gave approval.

"Yes, in general I'm happy," she said. "I've always felt that the deficit has dragged the United States into a second-rate economy."

Uyehara, retired and a Democrat who voted for Clinton, said that she thought the president did a good job of presenting his case.

"I didn't think he answered all of the questions related to the problem. But he was convincing because so many Americans have gone through difficult times lately. I feel the plan shows he is one who wants to do something to find an answer for greater numbers of people who are unemployed."

Uyehara said, however, that she thought the president would have some difficulty in obtaining what he wants, but hoped that downsizing government would be a high priority.

"Government is so bloated," she said. "I think he needs to do more—(cutting) 100,000 jobs is a drop in the bucket. It's not enough."

As a senior citizen, Uyehara said that she was willing to go along with Clinton's plan to tax Social Security. "I think it's for the greater good. Just because you're retired doesn't mean you shouldn't be touched. So if people have enough income to be comfortable, it's okay."

Tarynn Yokomizo, 31, president of the Philadelphia Chapter, JACL, approves of Clinton's plan but feels he could have gone further.

"It's not enough," she said. "(Raising) taxes is okay but I think he wimped out. He didn't cut enough of Social Security, Medicare, Medicaid for the wealthy. He could have cut a couple more million off the military. What he did was a drop in the bucket."

Yokomizo, a Democrat who voted for Clinton, said "I'm willing to pay my part. If we don't now, we may never get rid of the deficit. I wouldn't mind paying for the deficit if I know where it's going. There has to be some accountability."

And speaking as a parent and teacher, she said she was glad to hear that the plan included a proposal to immunize children and to revitalize Head Start. "If taxes go up, it's worth it. Head Start is worth it. My kids will have a chance. (In the past), government has mortgaged our future. We need to bite the bullet. That's investing in the future," she said.

Jon Kaji, 37, of the Gardena Valley Chapter, JACL, and national secretary/treasurer, said he wants to see more of the specifics

All aboard

All aboard is a listing of new 1993 board members of various organizations. Send us your list and an in-focus photo and we'll run them as soon as possible.

VENTURA, JACL

President: Dr. Tsujio Kato
Vice president: Chuck Kuniyoshi
Secretary: Marcia Miyasaka
Treasurer: Ken Nakano
Membership/insurance commissioner: Joanne Nakano
Public relations/newsletter: Edwin Miyasaka
Scholarship chair: Denise Kato, Ron Morinishi
Japanese Cemetery Restoration chair: Dr. Tsujio Kato
Speaker's Forum chair: Harry Kajihara
Cultural chair: Carolyn Morinishi
Legacy Fund chair: Yas Umeda
Members-at-large: Cherry Abe, Mori Abe, Janet Kajihara, Sumiko Kato, Emiko Kodama, Roy Kodama, Jean Kuniyoshi, Ellen Matsuo, Stan Mukai, Mitzi Ogata, Roy Sumino, Ruby Sumino.

BERKELEY, JACL

Co-presidents: Al Satake, Gordon Yamamoto
1st vice president: Jane Ogawa
2nd vice president: Mark Fujikawa
3rd vice president: Joe Takano
Treasurer: Tak Shirasawa
Directors: Dan Date, Lisa Hirai, Brent Mori, Janet Nitao, Neal Ouye, Amy Shimada, Neal Taniguchi, Ken Yabusaki, Ann Yabusaki, Terry Yamashita,



San Jose Nikkei Singles

Incoming 1993 San Jose Nikkei Singles officers were recently installed in Los Gatos, Calif. From left are Mae Inouye, treasurer; Miyo Toko, president; Shiz Nishimura, recording secretary; Bette Uchida, first vice president; and Adele Hirose, second vice president. Not pictured is Tomoye Taketa, corresponding secretary.

Scott Yokoi.

RENO, JACL

President: Cary Yamamoto
Vice president: Jeanne Onitsuka
Secretary: Grace Fujii
Treasurer: Henry Hattori
Insurance chairman: Elmer Tam
Membership: Linka Okada
Delegate: Cary Yamamoto
Scholarship Chair: Open

DIABLO VALLEY, JACL

President: Jon Kubokawa
1st vice president/program: Eizo Kobayashi
2nd vice president/membership: Ellen Kubokawa

Secretary: Linda Kawanami
Treasurer: Stephen Endo
Directors: Elsie Baukol, Sam Cohen, Mollie Fujioka, Isabel Oshiro, Jene Otagiri, Margaret Ow, Tom Shimizu, Joanne Wong

NEW MEXICO, JACL

President: Moss Kishiyama
Vice president/membership: Lois Kennedy
Vice president/social: Darrell Yonemoto
Vice president/culture: Randolph Shibata
Secretary: Paul Seto
Treasurer: Jean Kishiyama
Vice governor: Sei Tokuda

LAS VEGAS, JACL

President: Bill Endow
Secretary: Marie Stapleton
Corresponding secretary: Don Frazer
Treasurer: Clara Hamasaki
Membership: Mitzi Kunihiro, Chiyo Goto
Refreshment: Fukiko Frazer
Newsletter: Hana Fukumoto,

George Peck
Advertisement: Hana Fukumoto
JACL roster: Gwen Fukumoto
Labels: Gwen Fukumoto
Sorting/Mailing of Newsletter: Fred Fukumoto, Hana Fukumoto
Directors: (newly elected) Yoshie Finch, Sets Fukuno, Jane Miyamoto, George Peck; (in second year) Rhea Fujimoto, Fred Fukumoto, Hiroshi Meifu, Mitzi Kunihiro.

Kimura is guest speaker at St. Louis installation

By SHERRY SHIMAMOTO PRATT
 St. Louis Chapter, JACL

ST. LOUIS—JACL National President Lillian Kimura updated members about activities of the national office at the St. Louis Chapter, JACL, inaugural dinner Feb. 13.

Kimura told members that she would like the JACL to "become a major player in helping leaders make decisions" that affect Asian Americans and other minorities.

She praised the chapter, particularly board member Michael Hoshiko, for relaying information about the fire at the University of Illinois-Carbondale international student house facility. She also congratulated Hoshiko and George Sakaguchi for their leadership in completing the Rohwer restoration and Jerome dedication projects.

Outgoing chapter president Steven Mitori recapped the chapter's activities. He congratulated members for their participation in Asian American Heritage Month festivities, the Japanese Festival at the Missouri Botanical Garden, an educational event with the St. Louis Chapter of the American Jewish Committee, and meetings of national, JACL, and of the Midwest District.

Joe Yokota, St. Louis Legacy Fund chairman, reported that the chapter has reached 75 percent of its goal and is striving toward 100 percent participation among its

ST. LOUIS, JACL

President: Kendall Itoku
Vice president/programs: Diane Nishi
Vice president/membership: Mike Kimzey
Secretary: Steven Mitori
Treasurer: David Shimamoto
View editor: Sherry Shimamoto Pratt
Board members: Robert Mitori, Irma Yokota (also MDC 2nd vice governor), Sherry Shimamoto Pratt.

members. Kimura reminded members that Legacy Fund earnings are available to chapters for special projects.

MDC Gov. Al Hida, who installed the 1993 St. Louis Chapter officers, encouraged the chapter to network and to support the Legacy Fund.

New chapter President Kendall Itoku told members he wants to keep the chapter united. "JACL is our community," he said. "It's important that we have a strong, active chapter and share our experiences." ☐

Available Exclusively to JACL Individual Members and Groups

The JACL - BLUE SHIELD Health Plan



Quality Blue Shield Coverage At Special Rates For JACL Members

- Your Choice Of Doctors And Hospitals
- Wide Range Of Benefits Including:
 - Professional Services and Hospitalization Benefits
 - Dental Coverage
 - Medical Eye Service Vision Care Benefits
- HealthtracSM - A Personal Wellness Program To Help Keep You Healthy
- Over 36,000 Physician Members To Help You Save On Out-Of-Pocket Expenses
- Up To \$2,000,000 In Lifetime Maximum Benefits
- Worldwide Coverage
- A JACL Endorsed Health Plan Backed By Over 50 Years Of Blue Shield Experience

JACL members 18 and over may apply to enroll in the Blue Shield of California Group Health Plan sponsored by JACL. Applicants and dependents under age 65 must submit a statement of health acceptable to Blue Shield before coverage becomes effective. Members age 65 and over, covered under Medicare parts A and B, may join without a health statement.

For More Information, Write or Call Today:

(415) 931-6633

Yes! I want to know more about the the JACL-Blue Shield of California Group Health Plan.

- I am a member of _____ chapter.
- I am not a member of JACL. Please send me membership information. I understand that JACL membership is required to obtain this coverage.

Name _____ Age _____
 Address _____
 City/State/Zip _____
 Phone () _____ Work Home

Send to: Frances Morioka, Administrator
 JACL-Blue Shield of California Group Health Trust
 1765 Sutter Street, San Francisco, CA 94115

ESTABLISHED 1936
Nisei Trading
 Appliances - TV - Furniture
 SHOWROOM
 612 Jackson Street
 Los Angeles, CA 90012
 (213) 620-0882

Los Angeles Japanese Casualty Insurance Assn.
 COMPLETE INSURANCE PROTECTION

Aihara Insurance Agy. Inc.
 250 E. 1st St., Los Angeles 90012
 Suite 700 626-9625

Funakoshi Insurance Agency, Inc.
 200 S. San Pedro, Los Angeles 90012
 Suite 300 626-5275

Ito Insurance Agency, Inc.
 Howe Bldg, 180 S. Lake Ave., #205
 Pasadena, 91101
 (818) 795-7059, (213) 681-4411 L.A.

Kagawa Insurance Agency Inc.
 360 E. 2nd St., Los Angeles 90012
 Suite 302 628-1800

Kamiya Ins. Agency, Inc.
 120 S. San Pedro, Los Angeles 90012
 Suite 410 626-8135

The J. Morey Company, Inc.
 11060 Artesia Bl, Ste E, Cerritos 90701
 (213) 924-3494/(714) 592-2154/(408) 280-5551

Steve Nakaji Insurance
 11954 Washington Place
 Los Angeles 90066 (310) 391-5931

Ogino-Aizumi Ins. Agency
 1818 W. Beverly Bl, Montebello 90640
 Suit 210 (818) 571-6911/(213) 728-7488 L.A.

Ota Insurance Agency
 35 N. Lake Ave., Pasadena 91101
 Suite 250 (213) 617-2057-(818) 795-6205

T. Roy Iwami & Associates
Quality Ins. Services, Inc.
 241 E. Pomona Blvd.
 Monterey Park 91754 (213) 727-7755

Sato Insurance Agency
 366 E. 1st St., Los Angeles 90012
 626-5861 629-1425

Tsuneishi Ins. Agency, Inc.
 327 E. 2nd St, Los Angeles 90012
 Suite 221 628-1365

AHT Insurance Assoc, Inc.
 dba: Wada Asato Associates, Inc.
 1451 W. Artesia Blvd., Gardena 90247
 Suite A (310) 516-0110

Kenneth M. Kamiya Insurance
 373 Van Ness Ave., Suite 180
 Torrance, CA 90501 (310) 781-2066

JACL
LEGACY FUND

The Gift of the Generations

• Yes, I want to help build the future for Japanese Americans. Please accept this contribution to the "Gift of the Generations."

\$20,000 and over \$5,000 - \$9,999 \$500
 \$10,000 - \$19,999 \$1,000 - \$4,999 \$200
 Other \$ _____

• My contribution to the Legacy Fund: \$ _____
 • I would like my gift recorded in memory of:
 (HONOREE) _____

• I am unable to contribute at this time, but would like to pledge:
 \$ _____ in 19 _____

Your Name _____
 Address _____
 City, State, Zip _____
 Telephone _____
 JACL District/Chapter _____

Please make your tax deductible contribution payable to:
JACL Legacy Fund.
 1765 Sutter St., San Francisco, CA, 94115
 Phone: (415) 921-5225

Opinions



From the frying pan

BILL HOSOKAWA

Saiki: adding up the numbers

In her final speech as head of the U.S. Small Business Administration, Patricia Saiki recently provided the Mile-Hi Chapter of JACL with some thought-provoking numbers:

* Asian Americans account for less than 3 percent of the nation's population. Yet they own more than 4 percent of U.S. businesses.

* Between 1982 and 1987, the number of firms owned by Asian Americans increased 89 percent to a total of 355,000. The number of employees in these firms more than doubled and annual receipts rose 161 percent to \$33 billion, making it the fastest growing U.S. business sector.

* Ninety-nine percent of all U.S. companies are classified as small businesses. They generate 54 percent of all sales and employ 57 percent of the private workforce.

I didn't have an opportunity to ask Saiki about more recent statistics, but what she accomplished in the two years of her administration makes it likely that the figures are even more impressive.

One achievement was an amendment to the so-called 8-A program providing minor-

ity firms greater access to government contracts. Perhaps more intriguing was adoption of a program based on the old Asian idea of *tanomoshi* to aid very small businesses—needing loans of as little as \$500 or \$1,000—to get a start.

In an earlier time Asian immigrants unable to get credit from banks organized cooperative groups which put their savings into a pool from which members could borrow. Saiki persuaded Congress such a "micro-loan" concept with federal assistance could be made to work for Americans today.

Non-profit micro-loan organizations with financial know-how were set up in each of the 50 states and provided with \$750,000—peanuts in these times—to get the small loans program started. The idea is that borrowers must pay back the money with interest to make funds available for other borrowers. It's working, says Saiki, "my Japanese heritage came in handy."

Saiki was elected to Congress in 1986 and 1988, the only Republican ever elected to the House from Hawaii. In the 1990 election Saiki left her House seat to run for the Senate. She was defeated, 188,901 to

155,978, by incumbent Daniel K. Akaka who had been appointed to complete the term of the late Spark Matsunaga.

The day after that election President Bush offered Saiki the SBA appointment. When Bush was defeated last November, Saiki was among those ticketed for replacement. She left office on inauguration day and will be teaching temporarily at the Kennedy School of Government at Harvard.

After that, what? Saiki is exploring several ideas. One is to set up an organization in Washington to give Asian Americans a vehicle for being heard in government. "I think," she told her Denver audience, "it is time for the JACL along with the other Asian American organizations to unite and have an effective voice in Washington."

Nor is a run for governor of Hawaii out of the question in 1994 when the incumbent, John D. Waihee is ineligible to seek reelection. Stay tuned. ☐

Hosokawa is the former editorial page editor of the Denver Post. His column appears weekly in the Pacific Citizen.

IN-SIGHT

Meeting members in the Midwest



By LILLIAN KIMURA
JACL National President

In spite of a snowfall of several inches, I was able to leave Newark over Valentine's weekend for the St. Louis Chapter, JACL, inaugural dinner. This was a wonderful family affair as parents and children join together to celebrate another year.

Outgoing president Steven Mitori is the third generation of his family to serve the chapter board. Incoming President Dr. Kendall Itoku was raised in Chicago before the family moved south. He finished high school in St. Louis, went to college and medical school in Missouri and did his residency in Boston. He told the audience that he looked for a JACL in the area without success so he was glad to be back in St. Louis among family again.

Sam Nakano served as emcee; his daughter Nikki and son-in-law John Hara are also active members. And I was able to bring greetings from John Hayashi, now of San Francisco, to his parents. My thanks to Jodi Carney and her mother Asako Morioka for their overnight hospitality.

Early the next morning Steve drove me to Lambert Airport for a short flight to Minneapolis for the Twin Cities installation. Here too the children have taken over the leadership from their parents.

Outgoing president Mark Honda is the son of Sam and Lily Honda, Sam having served as chapter president and MDC vice governor. Emcee Tom Hara, former chapter president and Gov. of MDC, was joined at the head table by his mother, Kimi Hara who chaired the national scholarship committee in the last biennium and serves as the chapter scholarship chair. Also serving on the board is Chuck Tatsuda Jr., whose father has been a long time leader in the Twin Cities. Incoming president David Hayashi is a transplant from Sacramento.

I was pleased to meet Sansei author David Mura because his mother Terry and aunt Miwako Nakauchi were classmates of mine at Hyde Park High and we all belonged to the same Y Teen Club in Chicago. I appreciated receiving an autographed copy of David's book, "Turning Japanese." It seems to me it is an excellent basis for a discussion on identity especially for a group like the Twin Cities board. Mark Honda pointed out that all the married members of the board have Caucasian spouses.

Lest readers of IN-SIGHT think that my trips are all work and no play, let me hasten to assure you that it is not so. Kimi Hara, Cathy Hara, June Fujino and Helene Shimizu took me to the Mall of America. Purported to be the largest mall in this country, it is built on what was the Vikings Stadium in Bloomfield, Minn.

Anchored on four corners by Macy's, Bloomingdale's, Nordstrom's and Sears, there is a seven-acre themed entertainment park called Knott's Camp Snoopy in the center. It has 23 rides and attractions and three theaters. While many of the shops are the same as you see in any mall, there was a Lego store which featured a number of massive sculptures made from Lego blocks.

Another unusual shop was called BareBones which features anatomical products such as skeletons, chocolate hearts and skulls. It was different! There is also a sports store that has areas in which you can try out the equipment like a basketball, hockey, ski slope, etc. To do the mall justice, you need several days and good shoes.

This ends my travels for a while. I want to express my appreciation to all the chapters I visited for their hospitality and kindnesses. It has been great fun to renew acquaintances and meet new people. That's thirty for now.

National JACL President Kimura's IN-SIGHT column appears regularly in Pacific Citizen.

Credit Union anniversary

The National JACL Credit Union will celebrate its 50th anniversary March 13 at the Little America Hotel, 500 South Main, Salt Lake City, Utah.

Cost: \$15 members; \$20 guests; additional \$5 for those without reservations.

Information: 800/544-8828. Reservations (by March 9): 801/355-8040. ☐

East Wind



BILL MARUTANI

Jiten, books & tomes

THE JITEN, entitled "Glossary of Scientific & Technical Terms," (*Kagaku Kōgaku Yō-Go Jiten*) compiled by Louise Watanabe Tung (Watanabe Hisako), must be one of the most comprehensive and up-to-date guide for those involved in technical fields of U.S.-Japan commerce. At least, I've never seen anything quite like it, particularly for one whose principal language is English. (In fact, I do have a commercial dictionary that, unfortunately for me, is intended for one facile in *nihongo* with the result that I need other dictionaries to understand the explanation in the commercial dictionary.) Author Tung's jiten consists of some 1,100 pages in two parts: the first part being Japanese-English and the second part being English-Japanese—with both sections reflecting the *kanji* writing of the term and the *romaji* pronunciation thereof. A most helpful feature of the jiten is the addition, where appropriate, of a category identification of the term, e.g. computer, electric, engineering, microbiology, etc., so that the reader has a comprehension of the context in which a term might be applied.

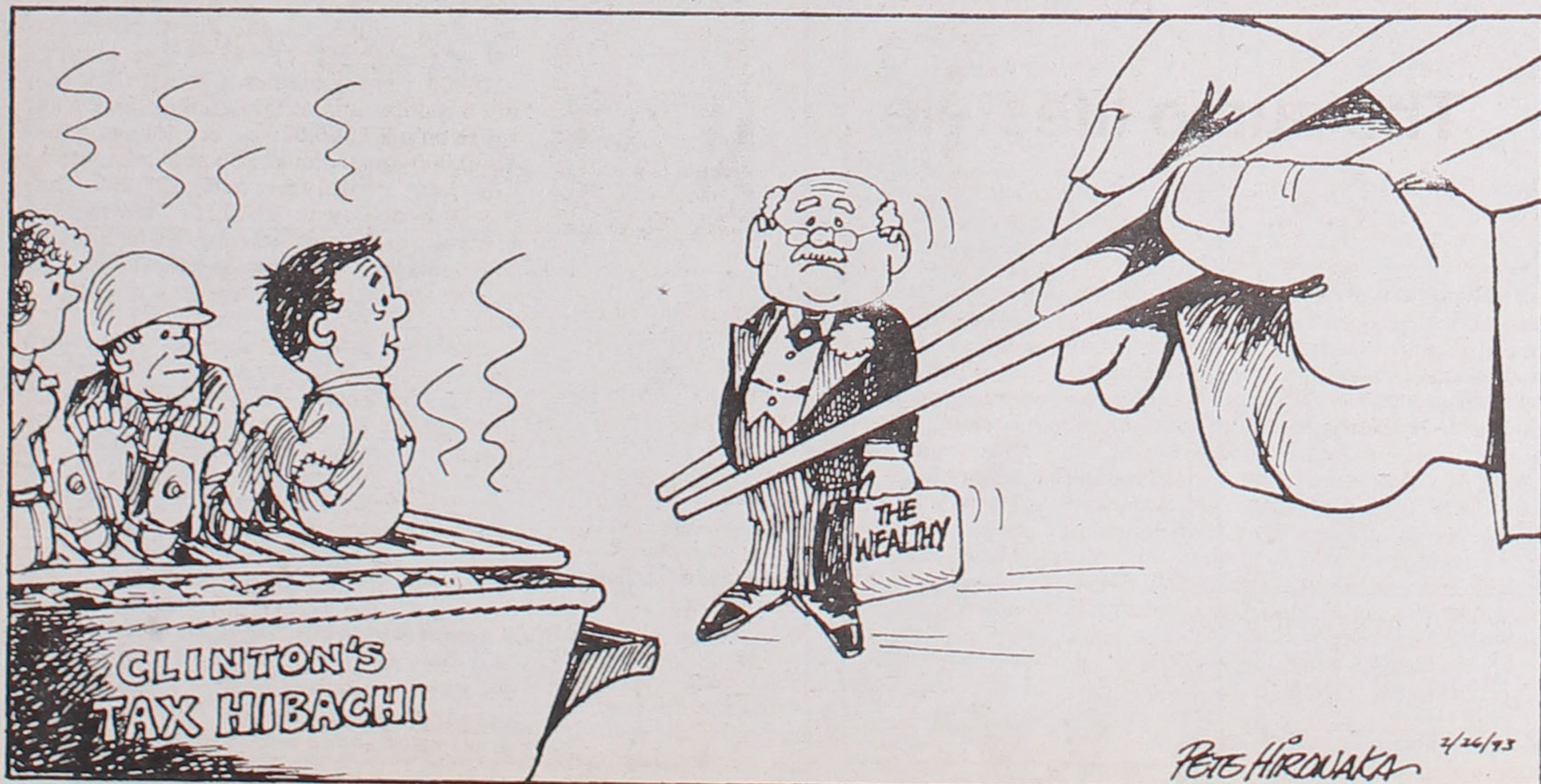
The jacket to the book reflect the following bits about Author Tung: she received a bachelor of science degree in Tokyo and a master's degree from the University of Chicago; and accredited member of the American Translators Association, Mrs. Tung has engaged in various facets of translating, not only translating technical papers for companies, agencies, and law offices but also tackling the translation of the 1987 Japanese publication of G. Taguchi's "System of Experimental Design." For those interested but whose local bookstore may not be carrying the book, the jacket indicates the book source: John Wiley & Sons, Inc., Prof. Ref. & Trade Group, 605 Third Ave., NYC 10158-0012.

SPEAKING OF BOOKS, Richard S. Oguro (now deceased, from Hawaii) responded to my request for a couple of his writings, entitled "Sempai Gumi" ("oldtimers," or "the originals"—referring to the first group of Nikkei who graduated from the language school during WWII) and "Boys of Company 'B'" referring to a company from the 100th Battalion, of which

Dick was an original member. Written in a straightforward, unpretentious manner, both books are personalized, first-hand accounts of what Dick saw, heard and experienced. As an intimate Nikkei's account, these books belong in any Nikkei library.

A FEW YEARS AGO, a Nikkei lady who apparently was stranded in China when WWII ended, sent me a manuscript describing her experiences. She asked me for my comments on the writing, and although I was flattered that she believed I had such competence, because of pressure of various legal cases then pending, I was compelled to postpone reading. But I ultimately did, and I found the recital and the drama intriguing. Just about that time, the lady (from California as I now recall) somewhat abruptly asked for the return of the papers, to which I promptly responded. I did not retain her name or address, and if she should happen to read this particular column, I want her to know that her script had, in my opinion, much potential. It could be developed in a dramatic movie—whether

See EAST WIND/page 12



PETE HIROUAKA 2/26/93

Voices from Japan

By TERUHIKO MANO
economist, *Sankei Shimbun*

The Japanese government should cooperate with the Clinton in adjusting yen-dollar exchange rates to lower the prices of U.S. products in Japan, says economist Teruhiko Mano. In an approach similar to that of Treasury Sec. Lloyd Bentsen, Mano calls for dynamic coordination of monetary policy by the Group of Seven. Enlightened self-interest demands that Tokyo slash its trade surplus with the United States, Mano says.

Seeking fresh leadership for the post-Cold War era, the American people have voted Bill Clinton into the White House.

At this stage, exactly what the president-elect's policies will be is unclear. But judging from Clinton's campaign, his record as governor of Arkansas and the current state of the U.S. economy, unemployment will be his most pressing concern.

Creating jobs will be the dominant factor in determining overall economic policy. The new president is likely to increase federal assistance to the states to encourage more spending on public works. He will simulta-

neously have to bring down the fiscal deficit, a crippling burden on the U.S. economy. Implementing cuts in politically sensitive areas like defense and health care, and boosting revenues with higher taxes on households with incomes over \$200,000 will require close cooperation with Congress.

This policy mix has two built-in risks. If infrastructure projects proceed without slashes in expenditures, the deficit could spiral higher. Alternatively, preoccupation with putting people to work could delay efforts to improve industrial competitiveness, which is crucial for curtailing the chronic trade deficit.

President George Bush is being evicted from the Oval Office after a single term because the trade and budget deficits have dragged the United States into its worst recession in more than 50 years. Whether Clinton meets with the same fate will ultimately depend on his ability to stem the hemorrhaging during the next four years, while also bringing unemployment down to an acceptable level.

This daunting task might push Clinton toward protectionist policies, such as

squeezing more tax revenue out of foreign companies operating in the United States, applying American antitrust law overseas, and supporting tougher retaliation against allegedly unfair trade practices.

Nevertheless, it would be wrong to assume that Washington will erect more barriers to trade simply because Clinton is a Democrat. A lot will depend on what happens to the twin deficits. We must at least wait and see who is chosen for the cabinet and other key government positions.

In Clinton's first 100 days, we can expect more pressure on Japan. The new administration will probably demand greater access to our markets, push for managed trade, and seek to adjust the dollar-yen exchange rate to boost U.S. exports and curb Japan's. The Congress will back this up with a trade bill full of sanctions.

Tokyo's response will go a long way in determining how protectionist the United States will be. We should not give in to every demand, of course, but reducing our giant-trade surplus is vital for bilateral relations.

The greenback may temporarily strengthen as investors and speculators

move out of the flagging Deutsche mark, but the U.S. Treasury will soon be tempted to drive the yen higher against the dollar. A stronger yen would help correct the trade imbalance by making Japanese exports more expensive in the United States and lowering the prices of U.S. products in Japan.

Since the European Community is also running a huge trade deficit with Japan, Germans would surely accept an upward realignment of the yen as long as the dollar remained stable against the mark. Given the tripolar structure of the global monetary system, yen appreciation does not necessarily mean dollar devaluation vis-à-vis other currencies.

That is where the Group of Seven leading industrial nations come into the picture. Their coordination of economic policy in the search for sustained worldwide growth should go beyond occasional adjustments in interest rates.

Recall how effectively the United States, Japan, West Germany, France and Britain, later joined by Italy and Canada, cooperated in manipulating the exchange mar-

See PROTECTION/page 10

Voices

Family style

By ALISON FONG and CRAIG MINAMI

The phrase "family style" is used at Chinese restaurants when everyone orders a separate dish with the intent to share it with everybody at the table. We believe that this phrase must now be part of the solution to the complex problems confronting Los Angeles today. The greater Los Angeles area is among the most diverse populations in our country. Diversity in this city extends beyond ethnic boundaries and includes sexual orientation, economic discrimination and so on. One can only imagine the challenges that local government and community based organizations are currently facing.

Learning about the diverse communities, the institutionalized political process, the governmental agencies, and community based organizations is the first step. Unless we understand these dynamics, we cannot begin to respond to the needs and demands of our community.

Recently in mid-January of this year, we, along with four other PSWD members, participated in the Los Angeles Public Affairs Program, which was organized by Jon Kaji and PSW Regional Director Jimmy Tokeshi. The purpose of the four day program is to expose its participants to local government officials and community based organizations.

On a Sunday, we went on a guided tour of the Japanese American National Museum

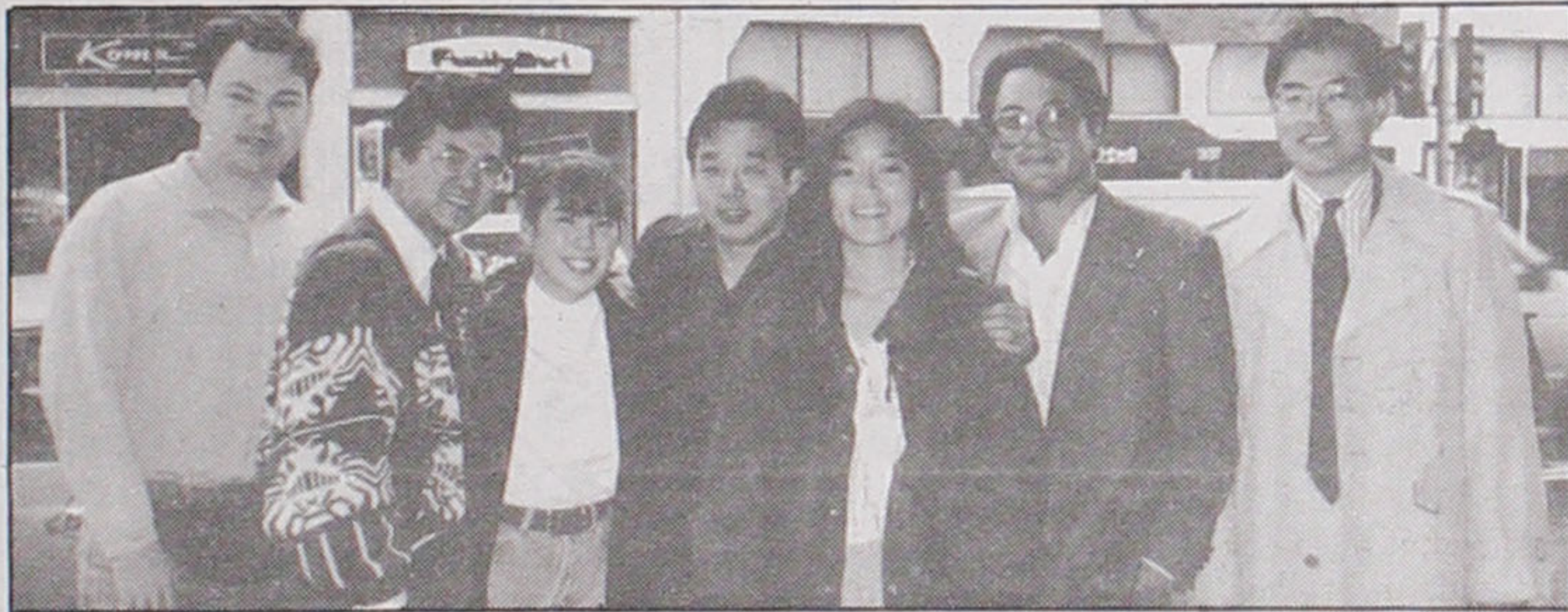


Photo: JIMMY TOKESHI

PARTICIPANTS—Taking part in a recent Los Angeles Public Affairs Program were, from left, Mark Greenblat, Gary Mayeda, Alison Fong, Craig Minami, May Yamamoto, Neil Sugimoto and Jon Kaji.

in Little Tokyo. At dinner that night, we discussed our upcoming meetings with the local government and community leaders.

The first full day included visits to local government officials, community leaders and the media. We met with the following men and women; Gil Garcetti, the Los Angeles County district attorney; Ron Wakabayashi and Eugene Mornell, executive directors for the Los Angeles City and County Human Relations Commissions, respectively; Jeff Matsui and Jill Nishi from the Mayor's Office; Barry Sanders and Annie Cho of Rebuild L.A.; Kathy Imahara from the Asian Pacific American

Legal Center of Southern California; and members of the editorial and business staff of the *Los Angeles Times*.

Those visits left us with mixed emotions. On the one hand, it was encouraging to hear Garcetti express a real concern for the rising amount of hate crimes in our community. But, it was also evident that these people are burdened by the overwhelming needs of the community and the limited resources available. For example, no one doubts that racial tensions throughout our community is at the top of the list of problems we must deal with. Wakabayashi and Mornell have paid staffs, including them-

selves, of 2 and 18 members to deal with communities of over three and nine million people, respectively. From these meetings, we observed that public policy is driven by the amount of resources available, rather than public policy driving resources.

The second full day was mostly filled with meetings with local and national directors of these community-based organizations; Joe Hicks of the Southern Christian Leadership Conference; Arturo Vargas from the Mexican American Legal Defense and Education Fund; Rabbi Gary Greenbaum from the American Jewish Committee; Ramona Ripston of the American Civil Liberties Union; and Dennis Hayashi from the JAACL. We also met with Warren Furutani, board member of the Los Angeles Unified School District; Angela Oh, president of the Korean American Bar Association; Rose Ochi from the Mayor's Office; and members of the editorial staff of the *Rafu Shimpo* newspaper.

It was obvious that fighting for political, social and economic justice was a way of life for these leaders. For many of these organizations, they represent and support underrepresented groups to the institutionalized political arena while also being forced to compensate for limited governmental services. Often, it is through these organizations, that public policy affecting these underrepresented groups is achieved.

See FAMILY/page 12

Moshi moshi

Akebono—the name means dawn's early light—the new *Yokozuna* and former *Ozeki* of the *Ozumo*, Japan's organized national sumo, is 204 cm. tall, and weighs 200 kg., or 6 feet 8 inches and 440 pounds. Akebono is the tallest champion in the past 70 years. Closest to him in height was Ouchiya of some years back, 202 cm, or 6 feet 7 inches. The tallest *Ozeki* on record goes back to the Edo era. Shakagadake was 223 cm, or 7 feet 4 inches, and Kumonryu, 208 cm, or 6 feet 9 inches.

Rikishi—the official designation of *sumotori*—are huge men, compared with the general populace. But besides the men cited above, they are pygmies. Of the 50 *Yokozunas* from the end of the 18th century, when the title *Yokozuna* was officially established as the highest rank, to 1965, only 15 were over 6 feet tall, though they weighed an average of 299 pounds. The two most celebrated *Yokozunas* of history, Hitachiyama and Umegatani, were 5 feet 8.5 inches, 321 pounds, and 5 feet 6 inches and 370 pounds, respectively.

There are 70 some *gaijin* rookies in *Ozumo* (the national organization of the sumo). They represent Brazil, China, Korea, Taiwan, Hawaii, Canada, Australia, and of all places, even England. The rookies' training is grueling. Takamiyama, the first Hawai-

ian to break the barrier against a foreigner, rose to *Sekiwake* and established a record for consecutive matches. Reminiscing about his hard beginnings, he said the *matawari* exercise (spread eagle in ballet and gymnastics) was so painful that he used to cry. Now retired as *Toshiyori* Azumazeki, he heads his own *heya* (stable) bearing his name. Akebono is the first *Ozeki* produced by his *heya*. *Toshiyori*, elder, is stockholder in the organization.

Rikishi must belong to some *heya*. Rookies must live communally in a dormitory where he must perform all sorts of menial tasks from cooking to toilet bowl cleaning. They also must serve their *anideshi* (elder-brother pupil) in all sorts of go-fers. *Fundoshi katsugi*, loin cloth carrier, the popular lay designation by which they are often called is more descriptive than merely

By JIN KONOMI

The sumo lifestyle



contemptuous.

For *gaijin* rookies another hardship to overcome is the peculiar sumo cuisine called *chanko ryori*. It is a blend of stew, bouillabaisse and mizutaki cooked in a large wok, of which all morsel are heroic size. It is nutritionally well balanced, and very tasty. It is gaining popularity in the lay world. But as a steady diet morning and night—*rikishi* eat only two meals a day—and day in and day out, it could be monotonous.

Have you ever wondered why the sudden recent interest in sumo as a career in foreign countries? The ease of entry certainly seems a factor. Without exception they are taller and heavier than qualifying measurements, 174 centimeters (5 feet 8.5 inches), and 75 kilograms (165 pounds), which are fairly large for the Japanese. Appeal to their ego may be another.

But more than anything else, I think it is the generous pay. The *Maegashira*, *Komusubi* and *Sekiwake*, the three ranks below *Ozeki*, get ¥1,077,00 per month, ¥50,000 per tournament, of which there are 6 regular and others on tour, and they retire on a ¥7,000,000 severance pay, plus ¥250,000 yen per tournament participated. The *Ozeki* monthly pay is ¥1,497,000. The tournament pay is ¥150,000; his retirement pay is ¥10,000,000 plus ¥400,000 per tournament. Besides, he is given ¥500,000 as prize when he gets promoted to *Ozeki*.

Akebono, before he became *Ozeki*, had bought a house for his parents in Hawaii. This sort of "koto bidan" (beautiful story of filial devotion) has always gone big with the Japanese. I think it is a big factor in his popularity. Another factor seems to be his progress with the Japanese language. Recently a newspaper man asked how heavy he was. "My left *kintama* is 100 kilo," he answered, grinning mischievously. "The other one too is 100 kilo, so the two together I must be 200 kilo," and he roared with laughter. A very vulgar joke, but certainly shows his mastery of Japanese. His promotion to *Yokozuna* did not have quite the unpleasant hassle Konishiki's case had.

See MOSHI/page 12

Kimura
PHOTOMART
Cameras & Photographic Supplies
316 E. 2nd St., Los Angeles, CA 90012
(213) 622-3968

CHIYO'S
Japanese Bunka Needlecraft
Framing, Bunka Kits, Lessons, Gifts
2943 West Ball Road
Anaheim, CA • (714) 995-2432

Personally speaking

George Sakaguchi was recently elected to the board of directors of the St. Louis Region of the National Conference of Christians and Jews. Sakaguchi, former governor of the Midwest District, JACL, has served as chairman of several JACL national committees. He is the project director for the Rohwer/Jerome Restoration Committee, which recently completed the restoration of the monuments at the Rohwer Cemetery and erected a monument at the site of the former Jerome Relocation Center.

Sakaguchi is also a member of the Volunteer Services Committee of the Bi-State Chapter of the American Red Cross, advisor to the St. Louis CORO Office, and vice president of the St. Louis Metro Seniors Golf Association.

He has also been awarded the Outstanding Volunteer Award for the World of Difference Program in St. Louis.

The National Conference of Christians and Jews is a civic group whose activities emphasize religious toleration. He will serve a three-year term.

Ruth Asawa and **David K. Lam** are among five prominent civic, business and education leaders who are scheduled to be honored at a March 4 University of San Francisco-sponsored event. The USF Center for the Pacific Rim and the Ricci Institute for Chinese-Western Cultural History will present Asian Pacific awards to Asawa and Lam for their leadership in and contributions to Asian American affairs in the Bay Area.

Asawa, an artist known for her lithographs, drawings and sculptures, has exhibited at major museums, galleries and corporate headquarters throughout the country. In 1989, she received the Cultural Award from the Japanese Cultural and Community Center of Northern California and the Arts Award from the Asian Heritage Council.

Lam is president and CEO of Expert Edge Corporation, a Palo Alto, Calif.,-based company he co-founded in 1989 to develop, market and support knowledge-based software. He is formerly president of Link Technologies.

Lam is director and immediate past chairman of the 600-member Asian American Manufacturers Association, a Silicon Valley-based association.

Marie Morisawa recently was honored with a University of Wyoming Distinguished Alumni award for her work in geomorphology, the nature and origin of the earth's surface.

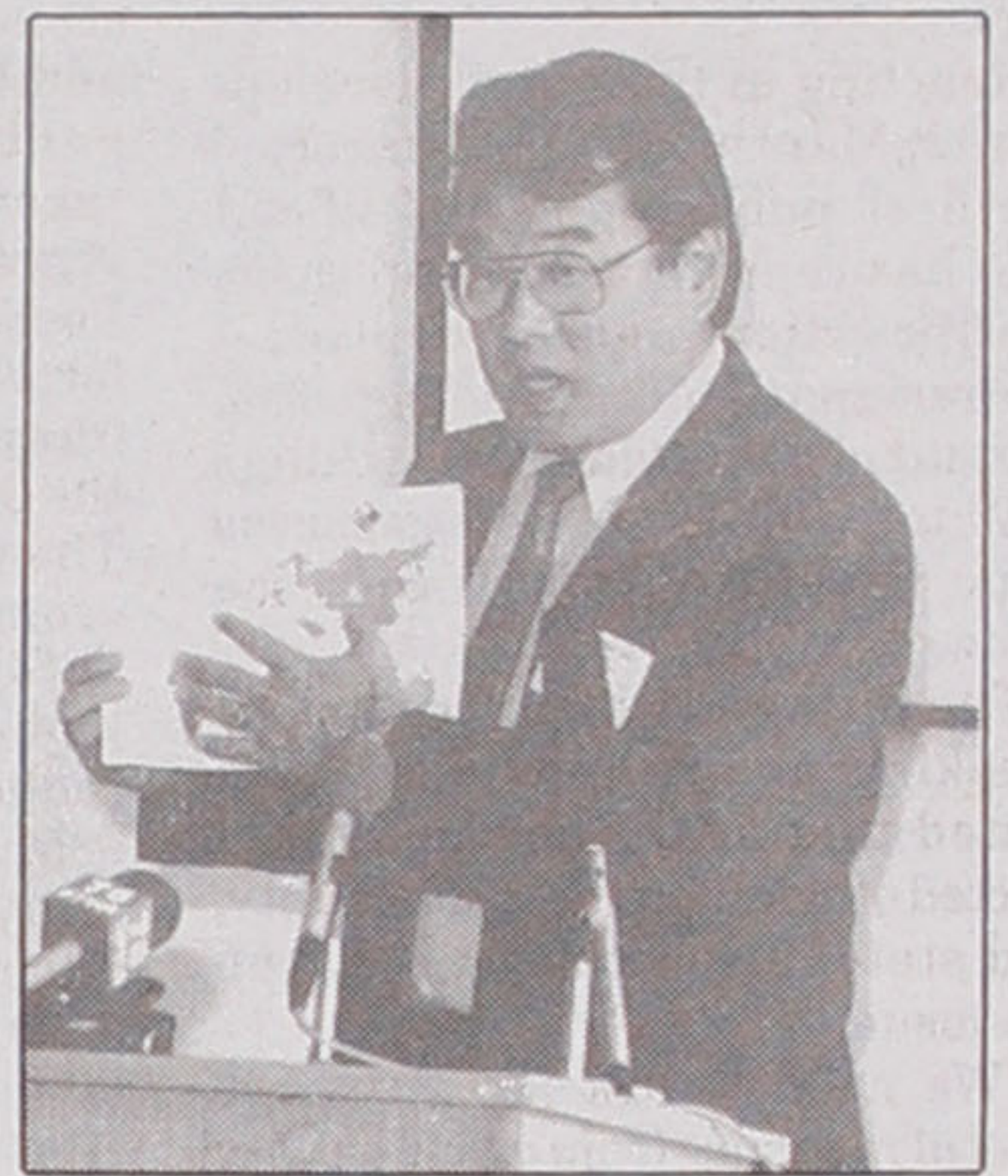
She received her bachelor's degree in mathematics cum laude from Hunter College in New York in 1941 and her graduate degree

Making deposits in a blood bank

Yukio Shimomura, executive with Fujitsu ICL System and a resident of Carlsbad, Calif., recently received the

Trailblazer Award from the National Marrow Donor Program (NMDP) for his volunteer efforts to recruit minority marrow donors with the San Diego Blood Bank. "Yukio's tireless commitment to the San Diego Blood Bank and to helping others have truly made a difference to leukemia patients everywhere seeking an unrelated marrow transplants," said Lynn Stedd, community relations director for the blood bank which nominated him for the award.

marrow donors were added to its registry through Shimomura's efforts. He was also instrumental in



YUKIO SHIMOMURA
Working for a good cause

It was the plight of

Brian Tanaka, a young Vista, Calif., resident who suffered from leukemia and was having difficulty finding a match due to his Hispanic and Japanese heritage, that brought Shimomura into contact with the bank in 1990.

Eventually 1,845 potential

creating the Asians for Miracle Marrow Matches, a recruitment organization for the NMDP.

This group helped to establish recruitment drives within Chinese, Japanese, Korean, Filipino, Vietnamese and East Asian communities.

12.9%
APR
NO ANNUAL FEE
25 DAY GRACE PERIOD

National JACL Credit Union

VISA

Join the National JACL Credit Union and become eligible for our new VISA card. Fill out the information below for membership information.

Name _____
Address _____
City/State/Zip _____



National JACL
CREDIT UNION

PO BOX 1721 / SLC, UTAH 84110 / 801 355-8040 / 800 544-8828



National Business and Professional Directory

Pacific Citizen Get a head start in business

Let everyone know who you are and what you do by placing an ad in PC's directory... If you've never advertised before you may now run your business card for 25 issues for only \$12 per line (regular rate is \$15). Call Andy today: 800/966-6157.

Three-line minimum. Larger type (12 pt.) counts as two lines. Logo same as line rate as required. PC has made no determination that the businesses listed in this directory are licensed by proper government authority.

Greater Los Angeles	San Jose, Calif
<p>ASAHI TRAVEL BUSINESS & LEISURE TRAVEL FOR GROUPS, FAMILIES & INDIVIDUALS. PACKAGE TOURS, CRUISES, RAILPASS, YORIOSE & LIMOUSINE SERVICE 1543 W. Olympic Blvd, #317, L.A. 90015 (213) 487-4294 • FAX (213) 487-1073</p>	<p>HENRY S. MURAKAMI Assoc. Vice President, Investments DEAN WITTER REYNOLDS INC. 19200 Stevens Creek Blvd., Cupertino, CA 95014. (800) 488-0199, (408) 725-0100</p>
<p>FLOWER VIEW GARDENS Flowers, Fruit, Wine & Candy Citywide Delivery Worldwide Service 1801 N. Western Ave., Los Angeles 90027 (213) 466-7373 / Art & Jim Ito</p>	<p>KAWAI-SAN MANOR DSS# 430708847 Residential Care for Elderly GREAT JAPANESE FOOD 1825 Bel Air Ave, San Jose, CA 95126 (408) 241-8262, Takeshi & Edichi Kawai</p>
<p>SEI SHIMOGUCHI, Attorney A General Law Practice emphasizing Personal Injury Criminal Law Ethics Consultations for Attorneys 700 S. Flower St., Ste. 1100, L.A. 90017 (213) 892-6303, Fax (213) 892-2204</p>	<p>MICHIKO JEAN MORROW, Realtor 1515 S. El Camino, San Mateo, CA 94402 Res. (415) 347-8880 Bus. 342-7701 FOX & CARSKADON Better Homes and Gardens</p>
<p>Dr. Darlyne Fujimoto, Optometrist & Associates A Professional Corporation 11420 E. South St, Cerritos, CA 90701 (310) 860-1339</p>	<p>AILEEN A. FURUKAWA, CPA Tax Accounting for Individuals, Estates & Trusts and Businesses 2020 Pioneer Court, Suite 3 San Mateo, CA 94403. Tel: (415) 358-9320.</p>
<p>Law Office of SADAAKI MATSUTANI 弁護士：松谷定明 日本語で相談依頼可能 921 Arcadia Ave., Ste. 5, Arcadia, CA 91007 (818) 447-9625 or (213) 628-9212</p>	<p>GLEN L. OUCHIDA Account Vice President—PaineWebber Inc. 3 Parkcenter Drive, Suite 200 Sacramento, CA 95825 (800) 828-3988 or (916) 929-0900</p>
<p>Orange County, Calif Anaheim Hills Psychotherapy JEANIE TAKAKI, L.C.S.W. Child and Family Counseling 142 S. Imperial Hwy., Anaheim, CA 92807 (714) 974-4326 LCS 16207</p>	<p>San Leandro, Calif. YUKAKO AKERA, O.D. Doctor of Optometry Medi-Care Provider, Fluent Japanese 1390 E. 14th St., San Leandro, CA 94577 (510) 483-2020</p>
<p>Steven K. Kawata, D.D.S. Adults & Children Newport Beach 360 San Miguel Dr., #601 (714) 760-3811</p>	<p>Seattle, Wash. Imperial Lanes Complete Pro Shop, Restaurant, Lounge 2101-22nd Ave So, Seattle (206) 325-2525</p>
<p>Anchorage, Alaska SYLVIA K. KOBAYASHI ALASKA REAL ESTATE, Jack White Co. Bus: (907) 563-5500 Res: (907) 272-4718</p>	<p>For Your Business and Professional Needs</p>

In college leadership conference



LISA SUGIMOTO
in year-long program

Long Beach City College dean of counseling **Lisa Sugimoto** will participate in an international leadership training program for college women administrators

throughout the year. Originally from Pasadena, Calif., and the daughter of Pasadena residents **George** and **Ruri Sugimoto**, she will study counseling department staffing strategies to meet student needs in a time of change and financial constraints.

Sugimoto joined the college in 1989 and formerly handled responsibilities in the counseling program at Cerritos College in Norwalk, Calif.

She holds master's degrees in counselor education (1977) and business administration (1987) from the University of Southern California, where she is pursuing a doctorate in higher education administration.

PROTECTION

(Continued from page 9)

kets to almost double the yen's value between the Plaza Accord of September 1985 and the Louvre Agreement of February 1987.

Upward pressure on the yen is mounting within Japan, in any case, quite apart from the necessity to reduce trade imbalances.

From 1984 through 1990, Japan's basic balance of payments, which includes trade and long-term movements of capital, was actually in the red as corporations financed the rapid global expansion of their operations and institutional investors poured large amounts of money into overseas assets.

By 1990, the cumulative net outflow of capital had reached \$200 billion, and the resulting deficit was covered by the banks'

short-term borrowing on the Euromarkets.

With the onset of recession in 1991, however, the flow of funds reversed. Japan's balance of payments went sharply into the black, and the banks are paying back more than they are borrowing.

As long as the surplus in the basic balance is canceled out by the cost of repayments, it has no impact on exchange rates. But the surplus in 1992, expected to be even larger than in 1991, will probably be sufficient to wipe out the rest of the debts accumulated during the years of capital outflow.

From the beginning of 1993, therefore, the net flow of capital into Japan will drive down the value of the dollar on foreign exchange markets.

Although a further appreciation of the yen would deal a heavy

blow to our export industries, it would help to tame our monster trade surplus. Exports are the main reason for the yen's rise in the first place and the underlying cause of friction with our trading partners. In a sense, our manufacturers have brought this on themselves.

A further adjustment in foreign exchange rates, which will speed up the process of economic restructuring, will be good for Japan. Imports can improve the quality of life by freeing land, labor and materials from production. Then we could redirect those resources to upgrading the nation's infrastructure, from housing stock to roads and airports. This is the path to sustainable economic growth.

Translated from the Japanese newspaper Sankei Shimbun by The Asia Foundation.

1993 TANAKA TRAVEL TOURS
EXCEPTIONAL VALUE • QUALITY TOURS

JAPAN SPRING ADVENTURE (Includes Festival) (14 days) APR 10
 KENTUCKY-TENNESSEE TAUCK TOUR (Nashville Opryland/Smoky Mtn) (9 days) MAY 15
 BEST OF SHIKOKU-KYUSHU (Inland Sea Bridge/Takamatsu/Kochi/Matsuyama Beppu/Kagoshima/Kumamoto/Nagasaki/Hirodo) (13 days) MAY 14
 CARLSBAD CAVERN-MONUMENT VALLEY (incl. Sedona/G. Canyon/Vegas/Laughlin) (8 days) JUN 2
 CANADIAN ROCKIES/VICTORIA (25th year/Scenic/Top Hotels/Most Meals Included) (8 days) JUN 16
 NIKKEI ROYAL CARIBBEAN CRUISE & DISNEYWORLD (8 days) JUN 23
 BEST OF EUROPE TOUR (London/Paris/Lucerne/Venice/Florence/Rome) (16 days) SEP
 NIAGARA-ONTARIO TAUCK TOUR (Montreal/Ottawa/Niagara/NY) (10 days) SEP 27
 JAPAN HOKKAIDO-TOHOKU (including Sado Island) (14 days) SEP 29
 EAST COAST & FALL FOLIAGE (Wash DC/Philly/NY/Boston/Foliage/Niagara Falls) (10 days) OCT 4
 JAPAN AUTUMN ADVENTURE (14 days) OCT 12
 HAWAIIAN GOLF HOLIDAY (Oahu-Hawaii Prince GC/Big Island-Waikoloa GC) (8 days) NOV 3
 CRYSTAL HARMONY'S PANAMA CANAL CRUISE (10 days) NOV 14

CALL OR WRITE TODAY FOR OUR FREE BROCHURES
 **TANAKA TRAVEL SERVICE**
 441 O'Farrell St., San Francisco, CA 94102
 (415) 474-3900 or (800) 826-2521

YAMATO TRAVEL BUREAU® 1993 ESCORTED TOURS

APRIL 1-13 13-DAY DELUXE SPRING TOUR TO JAPAN
 MAY 27-JUNE 12 17-DAY TOUR TO EUROPE
 JUNE 28-JULY 1 15-DAY DELUXE HOKKAIDO/TOHOKU TOUR
 JUNE 29-JULY 6 8-DAY HOLLAND AMERICA CRUISE TO ALASKA - INSIDE PASSAGE
 SEPT. 1-16 16-DAY DELUXE TOUR TO AUSTRALIA AND NEW ZEALAND
 SEPT. 1-9 9-DAY MISSION VALLEY FREE METHODIST CHURCH TOUR TO NOVA SCOTIA
 OCT. 5-16 12-DAY EXCLUSIVE EAST COAST/FALL FOLIAGE TOUR - Including Niagara Falls
 OCT. 20-NOV. 3 15-DAY DELUXE AUTUMN TOUR TO JAPAN
 NOV. 7-14 7-DAY CARNIVAL MEXICAN CRUISE
 NOV. 21-28 7-DAY CARNIVAL MEXICAN CRUISE
 DEC. 1-9 9-DAY TOUR TO HONG KONG (via Tokyo/Narita)

 **YAMATO TRAVEL BUREAU®**
 200 South San Pedro Street, Suite 502,
 Los Angeles, CA 90012 • (213) 680-0333
 or 800-334-4YTB outside the 213, 310 & 818 areas

ASAHI GROUP TOUR MENU 1993

ASAHI & AMERICAN HOLIDAY'S 2ND SNOW FESTIVAL TOUR—FEB 9-15
 See the 3 most popular events: "Sapporo Snow Fest", "Okhotsk Ice-Floes Fest" & "Hirosaki-castle Snow-Lantern Festival". All inclusive \$2593. Independent \$2193.
 ASAHI'S 3RD CENTRAL JAPAN SPRING TOUR—APR 15-23
 Tokyo-Niigata-Sado Isl.-L. Suwa-Takato-Matsumoto-Gero Onsen-Takayama-Kobe. See Springtime Climax in Ura-Nihon, Chubu Nippon & Kansai area. All inclusive \$2880.
 SENIOR CITIZENS' HAWAII & OAHU ISLANDS TOUR—MAY 6-12
 Honolulu-Hilo-Waikoloa-Kona-Honolulu. An all inclusive escorted group tour with islands tours, city tours, National Park Visits & a dinner show \$1443.
 TAMAGAWA ONSEN & TOHOKU SPRING TOUR—MAY 23-31
 Take Tohoku Shinkansen to Morioka, stay in Tamagawa & Yuze Onsen and enjoy tours to Hachimantai Nat. Pk., Odate, Kakunodate & Lake Towada. All inclusive \$2395.
 ASAHI GROUP SOUTHERN CARIBBEAN CRUISE—JUN 6-13
 Fly to San Juan, Puerto Rico to board 38,175-ton Festivale. Visit Islands of St. Thomas, St. Maarten, Dominica, Barbados & Martinique. Air & sea cost \$1593/\$1493.
 NORTHERN HOKKAIDO SUMMER TOUR—JUL 1-7
 Fly to Chitose, visit Sapporo, Wakkana, Cape Soya, Sarobetsu, Asahikawa, Hakodate, Tohoku-Shinkansen to Tokyo. All inclusive \$2585. Independent tour \$2140.
 TOHOKU GRAND SUMMER FESTIVALS TOUR—AUG 3-9
 Dynamic Summer Festivals of Tohoku; "Nebuta Matsuri" in Aomori, "Kanto Matsuri" in Akita & "Tanabata Stars Festival" in Sendai. All incl. \$2595. Independ. \$2195.
 (213) 487-4294
 **朝日旅行社**
ASAHI INTERNATIONAL TRAVEL, INC.
 1543 W. Olympic Blvd., Suite 317, Los Angeles, CA 90015

 **KOKUSAI-PACIFICA**
1993 TOURS

MAR 2	PANAMA CANAL CRUISE - SONG OF NORWAY	SOLD OUT
MAR 16	SUPER TOUR - CHINA DELUXE - 13 Days	SOLD OUT
MAR 22	SUPER TOUR - CHINA DELUXE II - 13 Days	SOLD OUT
MAR 31	Spring Japan and/or Korea - From 10 Days	\$2695
APR 14	Deluxe Orient Tour - 16 Days	\$2895
MAY 6	Australia & New Zealand - 14 Days	\$3995
JUN 15	Summer Japan and/or Korea - From 10 days	\$2595
SEP 2	Eastern Europe Vistas - 14 Days	\$3895
SEP 19	New York, New England & Canada - 8 Days	\$1695
SEP 30	Hokkaido & Tohoku Fall Foliage - 12 Days	\$3195
OCT 11	Uranihon Fall Foliage - 11 Days	\$2995
OCT 21	Japan Discovery Fall Foliage - 11 Days	\$2895
NOV 1	Japan Fall Foliage - 11 Days	\$2895
NOV 11	Okinawa, Kyushu & Shikoku - 12 Days	\$3195

All tours include - flights, transfers, portorage, hotels, MOST MEALS, sightseeing tips & taxes and touring by private motorcoach.
 Wait List accepted on sold out tours

For information and brochures—contact:
KOKUSAI INTERNATIONAL TRAVEL, INC.
 4911 Warner Ave., Suite 221, Huntington Beach, CA 92649
 714/840-0455- From 213/818/310 Call 800/232-0050

FAMILY
 (Continued from page 9)

We met with J.D. Hokoyama, of Leadership Education for Asian Pacifics during the final morning session. After the program, each participant was asked to make commitments to the community and to themselves. Everyone was inspired by the commitment of the men and women we met with and after having the opportunity to speak with them, it made us realize the need for committed people in those positions is greater than ever. It was also interesting to see the number of JACLers who are active in governmental service and coalition building activities. Also, as Asian and Pacific Islander Americans, we need to recognize our growing population and demand representation and accessibility to the political, social, and economic arenas.

As we said at the beginning, we felt the phrase "family style" was appropriate for the feelings that were expressed to us during the program. There is a belief that is commonly carried throughout the community that it is not enough to just show up at the table, you must bring something to the table in order to be accepted. There is also a definite concern that if the trend towards ethnocentrism continues, as if all of us were not facing the same troubles, soon the Balkanization of Los Angeles would become a reality. Working together will be a difficult process but we must begin now or else the problems we face today, will continue to exist tomorrow. The battle for equality and justice is not one which can be won alone.

Alison Fong is a graduate student at the Lyndon Baines Johnson School of Public Affairs at the University of Texas and Craig Minami is a litigation paralegal at Rosenfeld, Meyer and Susman. Alison and Craig are members of the APAN Chapter, JACL.

EXPERT
 (Continued from page 11)

U.S. trade relations with Japan, said that for too long in the U.S. an attitude toward trade of "computer chips, potato chips—what's the difference" has seen the decline and movement of high tech, high skill industries from America.

"In our economic policy, we focus on interest rates, the budget deficit, but have not paid attention to the underlying structures of the economy, on what we make," said Prestowitz.

"The premise has been that Japan is just like us, thinks the same, economic objectives are the same," said Prestowitz. "By assuming that the systems are the same we leave two explanations, 1—one side is cheating or being unfair or 2—one side is not performing."

Offering that the U.S. and Japan have different economic systems, Prestowitz said, "The Japanese believe in structural economics. I applaud them for it. I only wish the U.S. had adopted similar policies. Now, I am hopeful after Clinton's speech."

He noted that at a recent economic forum in Switzerland a Japanese economist said that Japan would have to change its culture. "It's encouraging. I'm not saying Japan must change its culture, but Japan can change its practices to be more compatible with the rest of the world," said Prestowitz.

As discussion continues throughout the media about whether or not Clinton is a protectionist, Prestowitz criticized the long running debate of protectionism versus free trade for stifling meaningful discussion. "What has troubled me is the stereotypical structure of discussion. Protectionism or free trade—any slight mediation—and there is criticism of heading towards protectionism. What is free trade? The European Community subsidizes Airbus, one result is McDonnell Douglas is in big trouble."

In a time when both the U.S. and Japanese economies are reeling and looking for new ways of dealing with each other, Prestowitz, quoting a Japanese official, said, "Many things are possible if you don't accuse us of being unfair—not be moralistic." Reiterating his optimism, Prestowitz said, "We may in fact usher in a better era of U.S.-Japan relations."

EAST WIND
 (Continued from page 8)

produced in Japan or the U.S. One plot in particular, still sticks in my mind.

I RECENTLY RECEIVED a tome—the first part of a two-volume work—authored by Norio Mitsuoka (Seattle) who was in the U.S. Army Air Corps (as it was then known) at the outbreak of WWII. But since I had just started to read the book entitled "Truman" authored by McCullough, somewhat to my dismay, I discovered that McCullough's book consists of some 1,000 pages. My habit of reading such books is in small installments—when time permits and the mood moves me. So I'm afraid it will be awhile before I get back to Mr. Mitsuoka's "Nisei Odyssey."

But I'm looking forward to it.

After leaving the bench, Marutani resumed practicing law in Philadelphia. He writes regularly for the Pacific Citizen.

MOSHI
 (Continued from page 9)

A gaijin Yokozuna! What will it bode for the future of sumo? Already many of the nagewaza (throws) have vanished from the ring. Akebono's and Konishiki's forte is tsukidashi or yorikiri. Sheer heft speaks here, with little room for waza. Will sumo be like the Anefuto, the American football? When the Tokyo Bowl played last year, the players were whites and blacks, and the Japanese were spectators.

Columnist Konomi is a prewar newspaperman who lives in Albany, Calif. His column appears regularly in Pacific Citizen.

OREGON NATURAL HISTORY TOURS

CONSIDER JOINING US ON ONE OF OUR VARIED TOURS EXPLORING THE DIVERSITY OF THE PACIFIC NORTHWEST

- Wildlife, Bird Watching, Botany
- Astronomy, Geology, Hiking
- Hot Springs, History, Photography

 **FULL CIRCLE TOURS**

Tours to favorite NW nature areas include: Malheur Nat'l Wildlife Refuge, Steens Mtn., Alvord Desert, Cascade Peaks, Columbia Gorge, Oregon Coast, NE Oregon and Hell's Canyon.

For Detailed Brochure:
 (503) 292-0189
 1335 SW 66th Ave., #405,
 Portland, OR 97225

Northwest Natural History Tours.

MEXICO
 The Number One Destination to Enjoy Your Vacation!

PUERTO VALLARTA FROM \$399.00
 The perfect paradise VELLAS VALLARTA (All Suite Resort) Including Breakfast!!!

CABO SAN LUCAS FROM \$343.00
 Hotel Plaza Las Glorias

CANCUN FROM \$489.00
 Hotel Plaza Las Glorias

MAZATLAN FROM \$328.00
 Hotel Costa De Oro
 INCLUDES: 4 days/3 nights
 • Round trip air from LAX • Welcome Cocktail
 PRICE PER PERSON - Valid until April 10/93 some restrictions apply dep. tax is not included open on Sunday 10 to 2:00 pm. CALL Your Travel Agent or (310) 657-2240 • 1-800/659-8477

 **MEXICANA VALLARTA'S VIP TRAVEL**
 8525 Sunset Blvd., W. Hollywood, CA 90069

BAJA CALIFORNIA MEXICO **NORWEGIAN CRUISE LINE**
\$199.00 & Up
 3 nights Baja Plus Port Taxes
1-800-456-0077
 (714) 530-9108 • Fax (714) 530-9187
 Based on Availability Prices Subject to Change

Utah
RETAIL CENTER/SALE SALT LAKE CITY
 97% occupied, 14% CAP priced
 'Hot' 94th So. 7th East Retail Area
 Bank Owner can't provide loan
 2.3 Million Cash Sale
 Interested Principals Only
 Call: **Chris Monson** for package
 (801) 539-1914
 Fax: (801) 532-5371

MRS KINNEY PSYCHIC READINGS
 Is Life Passing You By? Are You Very Depressed? Is Your Heart So Empty That You Can't Find What You Are Seeking For? Job Difficulties? Poor Health? Troubles In Your Home? Loneliness And Fear? Money Problems? For More Info & App. Call:
(818) 508-8460
 OPEN: Seven Days A Week 10 am to 8 pm PST
 12136 Oxnard St., N. Hollywood, CA 91606

WHOLESALE AIRFARE LA

HAWAII \$169 R/T

N.Y./BOS \$259 R/T
 PHIL/N.J. \$259 R/T
 FLORIDA \$289 R/T
 SEATTLE \$179 R/T
 Other Cities Available

433 NORTH CAMDEN, #629
 BEVERLY HILLS, CA 90210 (310) 288-1921
 Open M-F 9-6; Sun 10-2. Hotels Must Be Booked W/Wholesale Airfare

FLY TO PALM SPRINGS
GOLF 'N CAPITOL OF THE WORLD

 **GRAND AIRWAYS**

Daily Departures **\$79 ONLY**

Reservations: ONE WAY UNRESTRICTED
 1-800-634-6616
 1-702-798-6666

Prices & Schedules are subject to change without notice.

SAN DIEGO WEEKEND
 In the center of San Diego's trendy Gaslamp Quarter
FREE HARBOR CRUISE to first 20 reservations
HORTON PARK PLAZA HOTEL
 **SHIPPING LIST:**
 • All Suites
 • Bay Views
 • Free Continental Breakfast
 • Free Airport and Amtrak Shuttle

Suites from **\$59** per night
 (single or dbl. occ.)
1-800-443-8012
 520 E. St., San Diego