

Save the Date

February 20, 2010
88th year of the JACL Banquet.

The Voter's Guide to Ballot Measures

Real Progress Means Voting On Every Issue

As a voter committed to real progress in Washington State it is important that you mark every race on the ballot, including every ballot measure. The measure you skip could be the one that makes or breaks the goal of achieving high-quality health care for all, excellence in education, real security for our most vulnerable neighbors, and a cleaner, safer environment.

The Washington Ballot Guide shows key positions that will make or impede progressive government in Washington. Our goal is to help you make an informed choice on every measure in your local area. Remember, every measure counts.

Do your part to create a state committed to real progress. Learn what measure positions define positive change in Washington today. Then vote your whole ballot on November 3, 2009.

Visit the Washington Ballot Guide website for details on various ballot measures including but not limited to statewide: Initiative 1033 and Referendum No. 71 as well as local: Seattle Proposition #1 Housing Levy. <http://progressivevotersguide.com/2009general/washington/initiatives.aspx>.

From Hiroshima to Hope

Enola Gay, Manhattan Project, mushroom cloud—these are all words that cause Americans to recall the Hiroshima and Nagasaki atomic-bomb blasts. Some would rather leave these devastating events in the past, but we need to remember them. To those living in Japan, this list of words have little meaning. They do not conjure up the same images as say the word hibakusha. The English words listed above have more to do with the events that preceded the blast than those that followed. Perhaps because this is the point of view from which we Americans think about the atomic blasts...none of us were there. Hibakusha roughly translates to radiation survivor.

On August 9th each year, socially responsible Seattle citizens gather around Greenlake to remember that time in 1945. There were two atomic blasts, three days apart. Drawing on the tradition of Bon Odori, lanterns are lit at night and set afloat on Greenlake. The Seattle Japanese Calligraphy Society paints messages of hope on each of the lanterns.

See "Volunteer" on page 3

Pacific Northwest District Council (PNWDC) Meeting 1

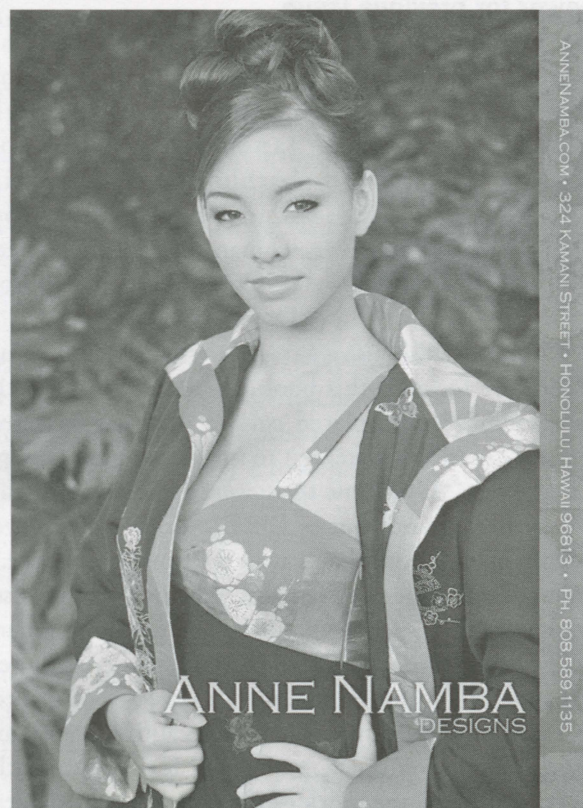
Chapter representatives from Gresham-Troutdale, Lake Washington, Olympia, Puyallup, Portland, and Seattle convened for the quarterly JACL PNWDC meeting in Seattle October 10. Chapters in White River, Spokane and Anchorage sent proxy votes via Sheldon Arakaki of the Lake WA chapter. Sheldon is also the National Vice President for Operations. Floyd Mori, National JACL Director, and Josh Spry, National Secretary/Treasurer, also attended the meeting. Members deliberated over a full agenda starting at 9 AM in the Seattle Chapter's office and then elected officers for 2010-2011.

See "Council" on page 3

Anne Namba Designs Sale

A one-day JACL benefit trunk show. A portion of each sale will be donated to the Pacific NW District Council, JACL. Anne's collections will be available for viewing and purchase at The Bellevue Club Hotel, 11200 SE Sixth Avenue, Bellevue; 1-866-795-5322; Sunday, November 8th, 9 AM to 6 PM.

In addition to Anne's newest collections she will also bring items from her annual sale, held once each year in Honolulu. Please visit the newly updated website at www.annenamba.com.



ANNENAMBA.COM • 324 KAMANI STREET • HONOLULU, HAWAII 96813 • PH. 808.589.1135

ANNE NAMBA
DESIGNS

New Year's Eve Gala

Save the date now, Dec. 31, 2009

Seattle JACL is planning a New Year's Eve Gala that we hope will become an APIA Community Tradition. We want all generations to attend so the music will progress from the 40's through the 00's as the night progresses. There will be a quiet jazz lounge for conversation and lots of hot and cold, served appetizers and a no-host bar. At midnight we will serve Ozoni, a traditional New Year's soup, to ensure all of us will have a full stomach in 2010.

Rides to and from the Gala will be provided at the beginning of the evening and toward the end of the evening. Come celebrate the beginning of a new decade with us.

Seattle JACL New Year's Eve Gala from 8 PM to 2 AM; Nissei Vets Hall, 1212 So. King St.; \$50 per person.

Trivia Photo

Who is this man and why is he important to Seattle?



Answer for previous issue

Sento at Sixth and Main – the title of a book about Japanese American communities and the cultural unfolding that



Cover from Sento at Sixth and Main.

comes about through the Japanese tradition of the bathhouse. Pictured in last month's trivia question is a woman that adorns the cover of this book by Gail Dubrow and Donna Graves.

While the bathhouse is a tradition that symbolizes Japanese culture, the focus of this book is about how the bathhouse now symbolizes a displaced culture that was scattered after Japanese Americans were sent to internment camps across the United States. At one time there were hundreds of bathhouses built by immigrants, but as Dubrow said, "I had never seen evidence of one."...until now with the Sento bathhouse. A part of our collective memory remains to help us rebuild a sense of community that is a part of our Japanese American heritage.

The author makes a strong case for preserving the Sento bathhouse as a historical landmark that weaves our people to the present and the future. There are beautiful photos and oral histories. By appointment, you can visit the Sento bathhouse and see first hand the quick exodus made by the owners. The bathhouse has not been touched or refurbished, giving you a sense of the historical period.

Church Bazaar

Blaine Memorial United Methodist Church has its annual holiday bazaar on Saturday, November 21 from 11 AM to 6 PM. The Bazaar will be held in the church's Lee Activi Center; 3001 24th Avenue South, Seattle.

Over forty Japanese craft booths will be available to show some of their beautiful hand-made gifts. Colorful Japanese fabric prints, hand-made lacquer-ware, paper gift boxes, paper lanterns and other items will be on display. In addition, there will be Japanese foods available.

Please contact Lily Yamamura at lyyams@comcast.net if you have vintage Japanese items you would like to donate. For questions, please contact Cheryl Sakura at _____ or Shizue Yahata at _____

Yes, I would like to support the work of JACL!

Do you have a family member or friend interested in becoming a member of JACL? If so, please use the form below to sign up or become a member online www.jacl.org/member.

—Thank you.

Membership Benefits

- Pacific Citizen Newspaper
- Scholarship Program
- Monthly Seattle JACL Newsletter
- JACL Credit Union Services

Membership Form

Membership Category: _____

Amount for Membership: _____

Additional Contribution: _____

Total Enclosed: _____

Name: _____

Address: _____

Phone Day/Evening: _____

E-mail: _____

Yes, receive chapter newsletter notice by e-mail.

Please make checks payable to JACL and remit to:
Seattle Chapter Membership Chair
P.O. Box 18558, Seattle, WA 98118

Volunteer, continued from page 1

There are inspirational speeches by Buddhist monks, ministers, rabbis, Native American tribal elders and others. There is a gathering to write calligraphy messages of hope on our lanterns, listen to music by Silk Strings, and enjoy a family program. There are messages by various speakers, followed by the Lantern Floating Ceremony

There is one Japanese man, a 98 year old still living in Japan, who holds the tragic distinction of being the only certified person to have been at the blast zone of BOTH the Hiroshima and Nagasaki blasts. He was on a business trip in Nagasaki when the first atomic blast hit. Three days later, he went to Hiroshima, where he was again in the blast zone and witness to the second bomb blast. He is a double hibakusha. We hope that there will never be another.

It is not too early to volunteer for the next From Hiroshima to Hope event. Would you like to help with this Seattle JACL sponsored event? We especially need people to help collect the lanterns from off of the lake after next year's ceremony. While the lantern ceremony is a beautiful one, it usually takes at least four hours to scoop all of the lanterns off of the lake, and longer if there is a strong wind on the lake! Boats and volunteers are scattered everywhere on the lake. However, more boats and volunteers could whittle the time down. This year, the last volunteers went home well after midnight.



Lanterns afloat on Greenlake.

This year there are roughly 15 organizations that sponsored the event. Groups are varied and include the Arab American Community Coalition, Buddhist Peace Fellowship, Episcopal Diocese of Olympia, Ethnic Heritage Council of the Pacific Northwest, Japan-America Society, Wing Luke Asian Museum, Peace Action of Washington, Saint Mark's Cathedral, United Nations Association Seattle Chapter, and Washington Physicians for Social Responsibility. In addition, this event is endorsed by December 13th Network for Poland, El Salvador and Disarmament, Ravenna United Methodist Church, Seattle Children's Peace Camp, Seattle Hiroshima Club, and the Washington Association of Churches. Do you have a group that would appreciate joining in the planning for next year? Please leave a message at the Japanese American Citizens League office at (206) 622-4098.

Thank you so much to all of these groups who came to the ceremony, and a special thank you to the University of Washington Asian Women's Service Sorority for their help in putting up posters along Greenlake and passing out flyers.

Council, continued from page 1

Reports from Floyd, PNWDC Director Karen Yoshitomi and others included many issues of interest to the broader JACL community:

- National JACL advocating for restoration of the President's Advisory Commission and White House Initiative on Asian Americans and Pacific Islanders.
- National JACL experiencing a difficult cash flow situation resulting in steps to cut its budget and to use reserves to meet costs. Looking for strategies to increase revenues.
- Pacific Citizen consumes the largest portion of the budget. The National Board is looking for ways to reduce its costs and will consider ideas such as shifting to electronic access and possibly asking individual chapters to provide hard copies to local members who do not have computer access.
- National JACL will start a program to encourage high school youth to be involved with community projects.
- National Conference will be in Chicago in 2010 and in Los Angeles in 2011. Conference in L.A. may be co-sponsored with Organization of Chinese Americans.
- National JACL, PNWDC and Minidoka Coalition are advocating to shift a high-voltage power line so it does not pass directly over Minidoka.
- National Board has not taken a position in support of attorney Mark Kamitomo in the Turner vs Stine medical malpractice lawsuit. PNWDC continues to work on case.
- Puyallup Chapter is working to install a Japanese Language School Memorial Garden in Tacoma.

Resolution supporting Mako Nakagawa's "Power of Words" proposal was approved. The resolution will be presented to the National Board at its next meeting in San Francisco on October 31.

Motion to support WA State Referendum 71 (supporting rights for all families) was approved.

Trunk show of Anne Namba fashions will be held at the Bellevue Club on November 8. Ten percent of the proceeds will be donated to the PNWDC.

Officers elected to serve in 2010-2011:

Governor:	Chip Larouche
Vice Governor (WA):	Dawn Rego
Vice Governor (OR):	Setsy Larouche
Secretary:	Arlene Oki
Treasurer:	Elaine Akagi
Historian:	Elsie Taniguchi

At the conclusion of the meeting, Chip and others expressed appreciation to Elaine Akagi for years of dedicated service as governor of the PNWDC.

Later that evening, a fundraiser was held at the Wing Luke Asian Museum for Floyd Mori's 70th birthday. The Hawaiian theme and food added a festive air and entertainment provided by a talented group of dancers and musicians was excellent. Proceeds will be donated to the National JACL.

Mission Statement: The Seattle Chapter JACL is a non-profit, grassroots civil rights organization dedicated to empowering our local community through high-quality programs and strategic partnerships focusing on activism, education, and youth leadership development. As a chapter of the Japanese American Citizens League, we strive to be a leading Asian American advocacy group for civil and human rights while promoting and preserving the values and cultural heritage of Japanese Americans.

Chapter Board Meeting: Our primary means of carrying out our mission is a monthly meeting, held at 6 PM on the third Wednesday of each month, except August, at the chapter office, 316 Maynard Ave. S, Seattle. Those wishing to make presentations or be added to the meeting agenda should contact President Dawn Rego prior to the meeting.

Seattle Chapter Newsletter: Published a week after the third Wednesday of each month by the Seattle Chapter Japanese American Citizens League. Address: PO Box 18558, Seattle, Washington, 98118. Phone: (206) 622-4098

October 2009, Volume 46, Issue 10
Editor and Newsletter Design: Ryan Minato

Contributors: Bylined articles represent the views of the writer and do not necessarily reflect the views of Seattle Chapter JACL or the National JACL. The entire contents are copyrighted by Seattle Chapter JACL Newsletter. No part of this publication may be printed without prior consent.

Article and Event Submission: Board members should submit materials to the editor () by the Friday after the monthly board meeting. Calendar items emphasize chapter or community events not likely to be covered by community newspapers or by other newsletters.

Seattle Chapter JACL website: www.jaclseattle.org

2009 Officers and Board Members

- President Dawn Rego
- President-Elect Nate Camir
- 1st Vice-President..... Sandra Sherma
- 2nd Vice-President Yuh-Line Niou
- 3rd Vice-President..... Elaine Akagi
- 4th Vice-President..... Akemi Matsumoto
- Treasurer Jeffrey Hattori
- Corresponding Secretary May Namba
- Recording Secretary..... Doug Honma
- Historian..... Kazzie Katayama
- PNWDC Board Delegate..... Arlene Oki

- | | | |
|----------------------------|----------------|------------------|
| Shea Aoki | Steve Hobbs | AC Peterson |
| Voltaire Atienza-Wilkinson | Sue Honaker | Ryzen Shimizu |
| Ryan Chin | Candace Inagi | Angel Taniguchi |
| Bob Hasegawa | Naomi Ishisaka | Elsie Taniguchi |
| Kiku Hayashi | Ken Kurata | Kendee Yamaguchi |

Seattle, WA 98104-2927
671 S Jackson St
KAREN YOSHITOMI



Non-Profit Org.
US Postage
PAID
Seattle, WA
Permit # 9180

Japanese American Citizens League
Seattle Chapter
P.O. Box 18558
Seattle, WA 98118-0558